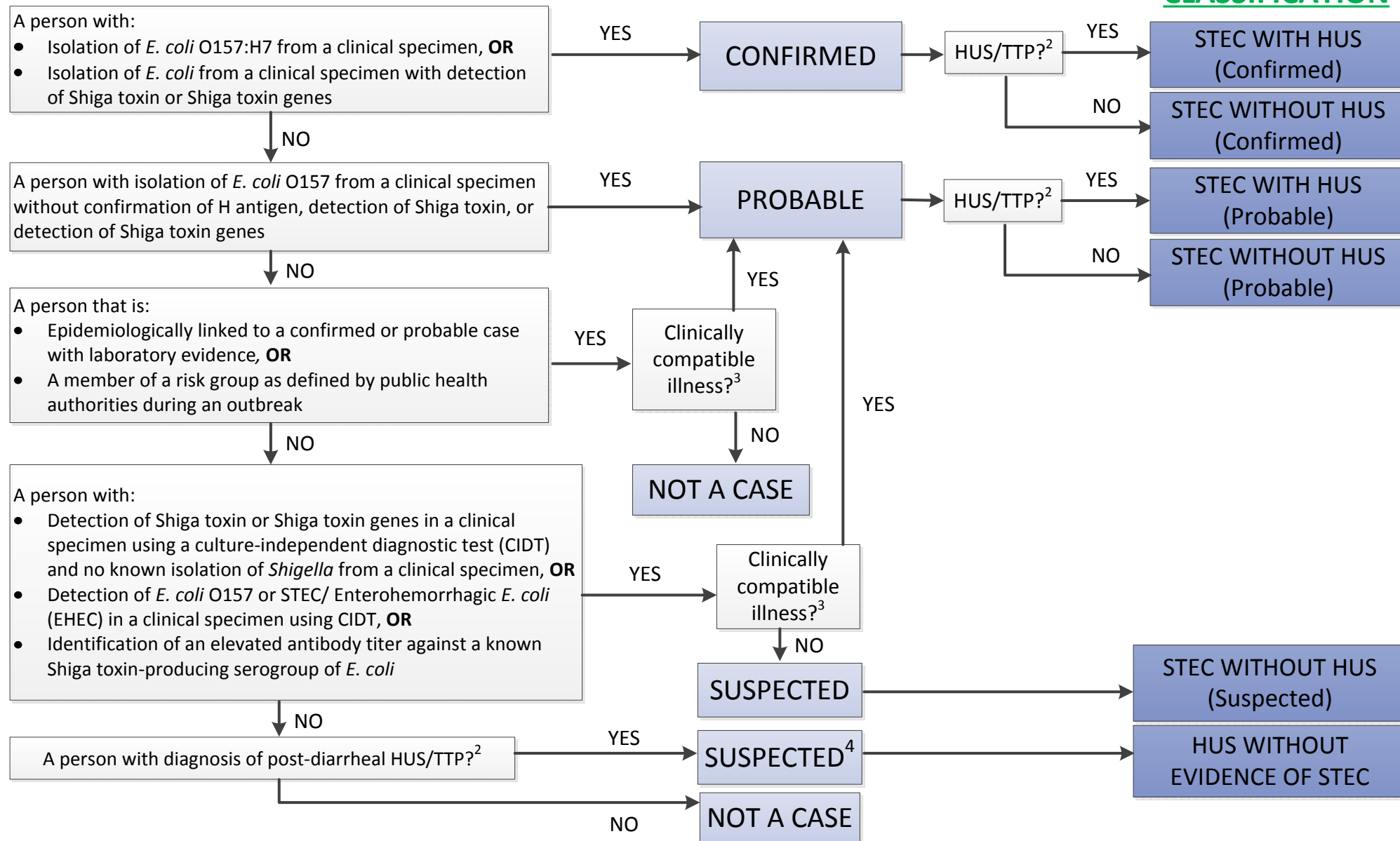


Shiga Toxin-Producing *Escherichia coli* (STEC) 2018 Council of State and Territorial Epidemiologists (CSTE) Case Definition¹

Diagram for CDPH Case Classification and Reporting



Note: Isolation or detection by any laboratory should be used for case classification, even when clinical and public health laboratory results are discordant

¹For STEC CSTE case definition, see <https://wwwn.cdc.gov/nndss/conditions/shiga-toxin-producing-escherichia-coli/case-definition/2018/>

²For CSTE case definition of post-diarrheal HUS, see <https://wwwn.cdc.gov/nndss/conditions/hemolytic-uremic-syndrome-post-diarrheal/case-definition/1996/>

³Clinically compatible illness includes one or more of the following: diarrhea (three or more loose stools within 24 hours), bloody diarrhea, abdominal cramps, hemolytic uremic syndrome (HUS)

⁴Case is considered Suspected STEC but should be reported to CDPH as "HUS without evidence of STEC"