



# Pertussis Snapshot

Reported as of December 31, 2021

Figure 1. Year to date\* pertussis case counts by week of onset -- California, 2016-2021

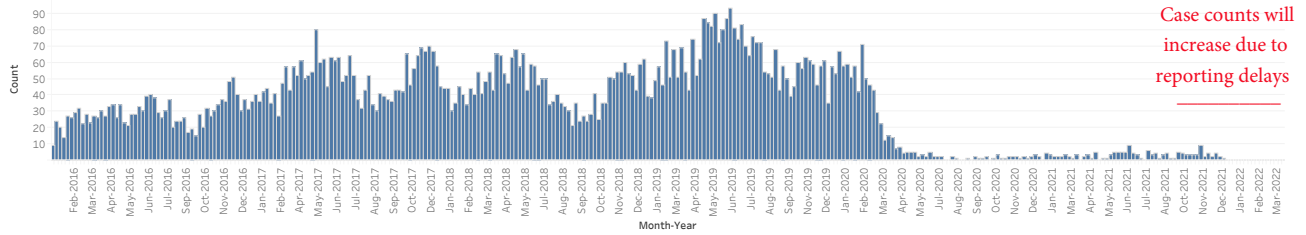


Table 1. Cumulative and year to date\* pertussis case counts by health jurisdiction and year of onset -- 2016-2021

Jurisdiction†	2016		2017		2018		2019		2020		2021	
	Total*	YTD Cases	Total*	YTD Cases	Total*	YTD Cases	Total*	YTD Cases	Total*	YTD Cases	Total*	YTD Cases
CALIFORNIA	1,519	1,513	2,591	2,584	2,326	2,317	3,230	3,222	699	699	147	147
ALAMEDA	57	56	79	79	187	187	90	90	25	25	4	4
BERKELEY	4	4	8	8	8	8	4	4	2	2	0	0
AMADOR	1	1	0	0	0	0	0	0	0	0	0	0
BUTTE	2	2	4	4	6	6	5	5	4	4	1	1
CALAVERAS	2	2	0	0	0	0	0	0	1	1	0	0
CONTRA COSTA	45	45	43	43	58	58	56	56	17	17	7	7
DEL NORTE	0	0	0	0	0	0	0	0	6	6	0	0
EL DORADO	9	9	5	5	0	0	1	1	6	6	0	0
FRESNO	15	15	36	35	65	65	64	64	9	9	1	1
GLENN	1	1	0	0	0	0	0	0	0	0	0	0
HUMBOLDT	0	0	0	0	0	0	5	5	2	2	0	0
IMPERIAL	3	3	0	0	4	4	15	15	4	4	1	1
INYO	0	0	4	4	0	0	0	0	1	1	0	0
KERN	23	23	16	16	32	32	55	53	22	22	1	1
KINGS	7	7	0	0	2	2	6	6	3	3	0	0
LAKE	0	0	8	8	0	0	0	0	0	0	1	1
LOS ANGELES‡	214	214	476	474	416	413	1,008	1,007	87	87	0	0
LONG BEACH	7	7	19	19	21	21	55	54	9	9	0	0
PASADENA	3	3	4	4	3	3	12	12	2	2	2	2
MADERA	3	3	7	7	24	24	29	29	3	3	2	2
MARIN	21	21	28	28	90	90	27	27	5	5	0	0
MARIPOSA	1	1	0	0	3	3	1	1	0	0	0	0
MENDOCINO	8	8	2	2	0	0	3	3	1	1	1	1
MERCED	0	0	1	1	9	9	8	8	0	0	0	0
MODOC	0	0	0	0	0	0	0	0	1	1	0	0
MONTEREY	16	16	24	24	28	28	55	55	18	18	2	2
NAPA	5	5	11	11	14	14	14	14	9	9	1	1
NEVADA	24	24	2	2	12	11	6	6	3	3	0	0
ORANGE	60	60	187	186	144	144	151	150	40	40	9	9
PLACER	17	17	77	77	19	19	29	29	8	8	1	1
PLUMAS	0	0	0	0	0	0	1	1	0	0	1	1
RIVERSIDE	67	67	125	124	53	53	76	75	22	22	28	28
SACRAMENTO	66	65	51	51	84	83	98	98	43	43	6	6
SAN BENITO	8	8	1	1	0	0	4	4	1	1	0	0
SAN BERNARDINO	28	28	35	35	18	18	41	41	10	10	0	0
SAN DIEGO	313	312	911	909	434	433	630	629	219	219	56	56
SAN FRANCISCO	10	10	30	30	29	28	29	29	6	6	1	1
SAN JOAQUIN	1	1	5	5	22	22	17	17	2	2	1	1
SAN LUIS OBISPO	26	26	14	14	13	12	18	18	5	5	4	4
SAN MATEO	76	75	45	45	58	58	48	47	12	12	2	2
SANTA BARBARA	9	9	8	8	17	17	17	17	10	10	2	2
SANTA CLARA	179	177	153	153	149	148	172	172	18	18	4	4
SANTA CRUZ	40	40	39	39	149	149	211	211	20	20	2	2
SHASTA	22	22	1	1	0	0	6	6	0	0	1	1
SISKIYOU	0	0	3	3	0	0	0	0	2	2	0	0
SOLANO	14	14	14	14	4	4	2	2	3	3	0	0
SONOMA	32	32	13	13	70	70	21	21	5	5	0	0
STANISLAUS	12	12	5	5	10	10	22	22	2	2	0	0
SUTTER	0	0	2	2	0	0	1	1	1	1	2	2
TEHAMA	4	4	1	1	0	0	0	0	0	0	0	0
TRINITY	0	0	0	0	0	0	1	1	0	0	0	0
TULARE	11	11	11	11	7	7	28	28	5	5	1	1
TUOLUMNE	0	0	5	5	1	1	1	1	0	0	0	0
VENTURA	27	27	56	56	50	50	72	72	18	18	2	2
YOLO	25	25	4	4	10	10	14	14	3	3	0	0
YUBA	1	1	18	18	3	3	1	1	4	4	0	0

Table 2. Cumulative and year to date\* pertussis case counts and deaths among infants <4 months of age by year of onset -- California, 2016-2021

	2016		2017		2018		2019		2020		2021							
	Total*	Deaths*	Total*	Deaths*	Total*	Deaths*	Total*	Deaths*	Total*	Deaths*	Total*	Deaths*						
CALIFORNIA	105	2	105	0	112	0	118	1	180	1	178	0	44	0	44	8	0	8

\* Total counts include cases for the entire year; year to date (YTD) counts include cases reported with an onset date between January 1 and December 31. Total and YTD counts for the current year will be the same.

† Counties with no cases reported between 2016-2021 are excluded from the table above. City health jurisdictions (Berkeley, Pasadena, and Long Beach) are excluded from county total.

‡ Due to delays in reporting, CDPH will include preliminary Los Angeles County cases in order to effectively track the epidemiology of pertussis in the state effective August 19, 2019.

Notes:

- This report should be viewed as a preliminary “snapshot” of pertussis activity. Because data are preliminary, the information may be updated in later reports as additional case reports are received.

- Reports include probable and confirmed cases based on the Council of State and Territorial Epidemiologists (CSTE) case definition current at the year of report. Case counts reflect a case definition change in 2020.