

Help Track Plague in California!

Report and submit dead rodents to the CA Department of Public Health

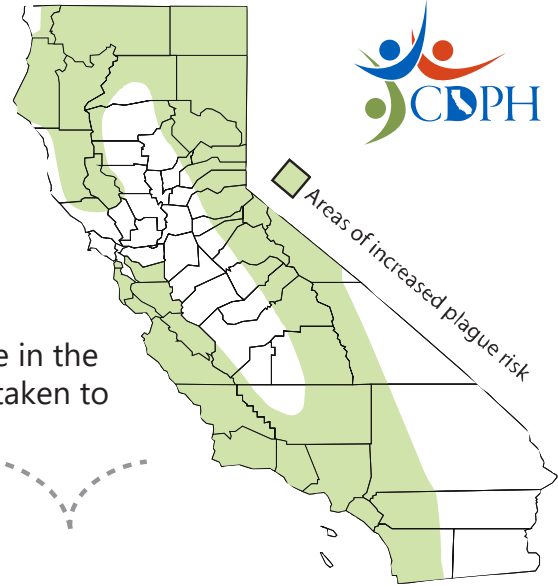


Plague is a disease caused by *Yersinia pestis* bacteria that spread from the bite of infected fleas living on wild rodents or in rodent burrows. Because people and pets can get plague, the California Department of Public Health (CDPH) works with local staff in recreation areas to monitor commonly visited areas for signs of plague.



Why monitor recreation areas?

The best way to protect people from plague is to proactively monitor popular recreation areas where rodents and their fleas are common. Rodents can die from plague, which can be a sign that plague is active in the area. If signs of plague are identified early, preventative steps can be taken to protect the public.



You can help!

If you find a dead rodent with no visible injury, or notice a large die-off or sudden absence of rodents in your area, notify CDPH right away.

Call or report online:



(916) 552-9730

Scan to report



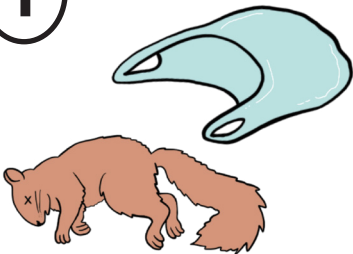
Some rodents to look out for:



- All reports are useful, and CDPH may ask for your help in safely collecting the dead rodent for testing.
- After reporting, continue to look for signs of plague in the area, and caution visitors to avoid contact with rodents and fleas.

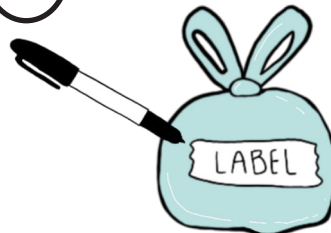
How to Submit a Dead Rodent to CDPH:

1



Use gloves to collect dead rodent in a clear bag. Or turn bag inside out to pick up carcass. One carcass per bag.

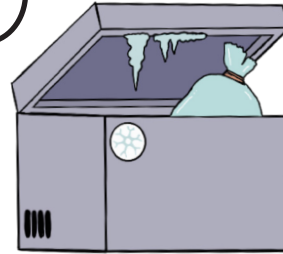
2



Seal and label bag with:

- Date/time
- Collection location
- Collector's name/agency

3



Double-bag and freeze or put on ice ASAP.

4



Contact CDPH for shipping instructions:

(916) 552-9730
VBDS@cdph.ca.gov