



Vaccinate **ALL 58**

Together we can end the pandemic.
Juntos podemos acabar con la pandemia.
我們可以一起終止疫情。

California Health and Human Services Agency (CHHS) California Department of Public Health (CDPH)

Community Vaccine Advisory
Committee

Meeting #11

March 5, 2021

12:00 PM – 2:00 PM

Welcome to the Community Vaccine Advisory Committee

Nadine Burke Harris, MD, MPH,
California Surgeon General, Co-Chair

Erica Pan, MD, MPH,
State Epidemiologist, Co-Chair

Meeting Process

- All meetings will be virtual and interactive; cameras on; mute until ready to speak
- Use hand raise icon when you are ready to make comments/ask questions
- Consistent attendance by members; no delegates or substitutes
- Today we will be having ASL Interpreter and closed captioning for members
- Website - <https://www.cdph.ca.gov/Programs/CID/DCDC/Pages/COVID-19/Community-Vaccine-Advisory-Committee.aspx>
- Public listen-in mode via telephone at each meeting in English and Spanish
- Meeting will now be live-streamed on YouTube – https://www.youtube.com/channel/UCkNEUklwtlc_kPenEZMUIOw
- Public comment via written comments COVID19VaccineOutreach@cdph.ca.gov; will be discussed with Committee at subsequent meetings; all public comments received will be posted weekly on the CDPH website
- Technical issues with Zoom – put questions in chat

Summary of Public Comments Since Meeting #10

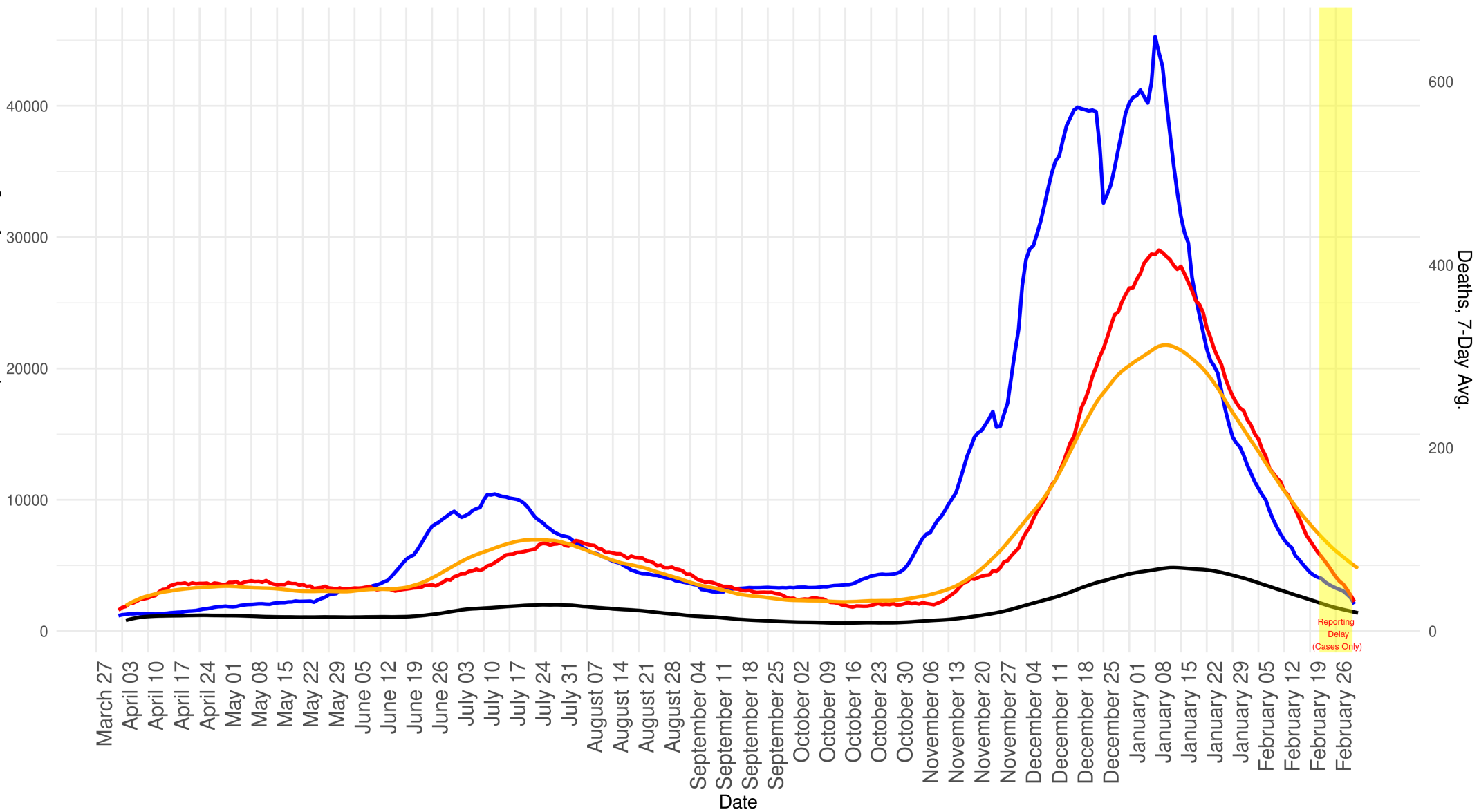


Opening Comments

Nadine Burke Harris, MD, MPH,
California Surgeon General, Co-Chair

Erica Pan, MD, MPH,
State Epidemiologist, Co-Chair

Cases/Hospitalizations, 7-Day Avg.



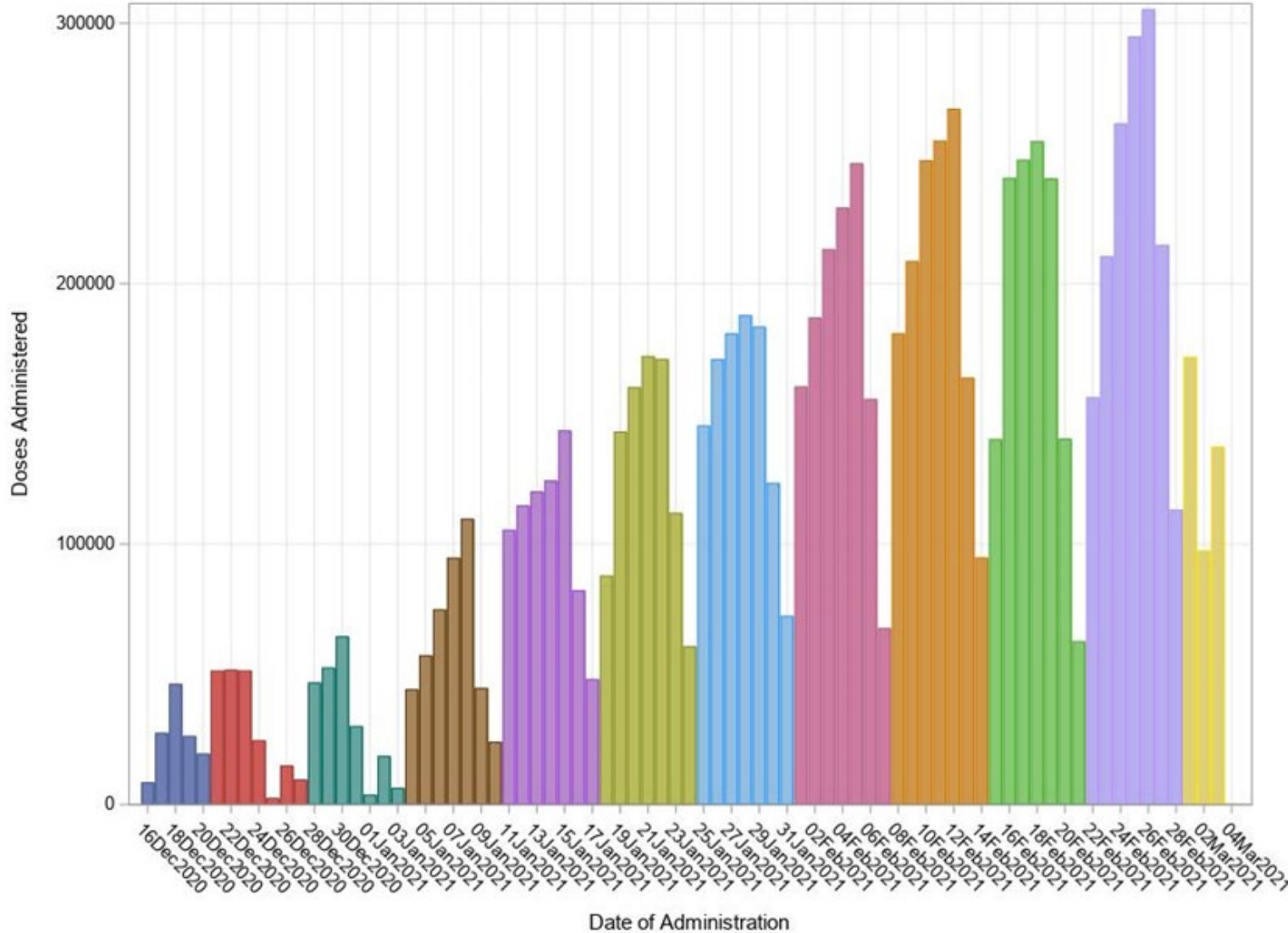
- Cases
- Deaths (rescaled for visibility)
- Hospitalized COVID +
- ICU COVID +

Case and death data from CalREDIE. Hospitalization data from CHQC
2021-03-04 16:58:35

Vaccine Doses Administered by Day (and by Week)

As of: 04MAR2021

Total Vaccine Doses Administered: 9,673,787



Vaccine Doses Administered by Day (and by Week) as of March 4, 2021

Total Doses Administered: 9,673,787

Who Can Get Vaccinated Now?

Phase 1A

Est. 3M people

NOW VACCINATING

- Healthcare workers
- Long-term care residents

Phase 1B

Est. 12M people

NOW VACCINATING AS SUPPLIES ALLOW

- Individuals 65 and older
- Sector populations:
 - Agriculture and food
 - Education and childcare
 - Emergency services

Who Can Get Vaccinated?

Beginning **March 15**, healthcare providers may use their clinical judgement to vaccinate individuals aged 16-64 who are deemed to be at the very highest risk to get very sick from COVID-19 because they have the following severe health conditions:

- **Cancer**, current with weakened immune system
- **Chronic kidney disease**, stage 4 or above
- **Chronic pulmonary disease**, oxygen dependent
- **Down syndrome**
- **Solid organ transplant**, leading to a weakened immune system
- **Pregnancy**
- **Sickle cell disease**
- **Heart conditions**, such as heart failure, coronary artery disease, or cardiomyopathies (but not hypertension)
- **Severe obesity** (Body Mass Index ≥ 40 kg/m²)
- **Type 2 diabetes mellitus** with hemoglobin A1c level greater than 7.5%

OR

- If as a result of a developmental or other severe high-risk disability one or more of the following applies:
- The individual is likely to develop severe life-threatening illness or death from COVID-19 infection
- Acquiring COVID-19 will limit the individual's ability to receive ongoing care or services vital to their well-being and survival
- Providing adequate and timely COVID care will be particularly challenging as a result of the individual's disability.

Blueprint Updates as of 3/4/21

- California's focus on vaccinating individuals living in the state's Vaccine Equity Quartile communities as a critical indicator of the ability to expedite protection and disease transmission prevention to the whole state.
- This will be addressed in the modifications to the Blueprint by shifting tier thresholds to higher case rates/100K/day based on vaccination benchmarks within Vaccine Equity Quartile communities.

Blueprint Updates as of 3/4/21

Doses administered in the Vaccine Equity Quartile (statewide)	Tier 1 Widespread (Purple)	Tier 2 Substantial (Red)	Tier 3 Moderate (Orange)	Tier 4 Minimal (Yellow)
Current: Less than 2 million doses administered	Case Rate > 7	Case Rate 4 - 7	Case Rate 1 - 3.9	Case Rate < 1
Goal #1: 2 Million administered	Case Rate > 10	Case Rate 4 - 10	Case Rate 1 - 3.9	Case Rate < 1
Goal #2: 4 Million doses administered	Case Rate > 10	Case Rate 6 - 10	Case Rate 2 - 5.9	Case Rate < 2

Update on Third Party Administrators/Blue Shield COVID-19 Vaccine Distribution Plan

Marta Green, California Government Operations Agency

Kimberley Goode, Blue Shield of California

Peter Long, Blue Shield of California

Andie Patterson, California Primary Care Association

Equitably Accelerating Vaccine Distribution and Administration for Californians

What we are trying to deliver as we build and expand the network

**California's
Statewide Vaccine
Network is designed
to save more lives.**

**Delivering an improved
and connected
experience**



**More options
to vaccinate
Californians
faster**

- Statewide network of providers
- Geographically diverse mega sites
- Home visits
- Mobile providers
- Pharmacies

**More
resources to
reach diverse
communities**

- Network designed to reach the most vulnerable and those disproportionately affected by COVID-19 infection and death
- Support to providers and local health jurisdictions for FEMA-eligible costs associated with supporting the transition to a new system and workflow
- Patient navigators
- Support services, including extended hours, language capacity, accommodations for physical accessibility and mobile clinics

**More user
data and
reporting for
transparency**

- A more consistent and reliable user experience for all Californians
- Timely data sharing
- Daily allocation reports to ensure equity, efficiency, and speed of network
- Ongoing community and stakeholder engagement

Lack of timely, accurate data is a prohibitive barrier to achieving our goals

Without a dramatically improved data collection and performance management system, we will be unable to:

Maximize CA allocation of vaccine



Total doses delivered to CA ¹	10.5 million
Total doses administered in CA ¹	8.0 million
Total doses of inventory in CA¹	2.5 million

First dose allocations to CA have been flat. We must demonstrate the ability to administer the vaccine supply we have, in advance of the federal government increasing supply rapidly

¹ As of 2/25/21

Hit our equity goals



- Consistently prioritize our highest risk populations for vaccinations
- Know precisely who has been vaccinated on the same day
- Understand equity performance at an individual provider/site level and make appropriate changes to improve it
- Reserve vaccination appointments statewide for target populations

To achieve these outcomes, Blue Shield as the TPA will begin managing the statewide vaccination network, effective March 1st

As of March 1st...

There will be no change to the current vaccination network

Blue Shield will be making recommendations regarding vaccine allocation to providers in part based on key performance measures

Blue Shield will co-create with all local health jurisdictions a transition plan

Additional details

All providers currently in the system as approved to receive vaccine will maintain that status

Key performance measures include (but are not limited to):

- Contribution to equitable administration of vaccine
- Signing a contract
- Committing to adopt the performance management system, including My Turn

Transition plan will include:

- Achieving equity goals
- The transition of all jurisdictions to a new performance management system by March 31st

Methodology used to determine transition waves

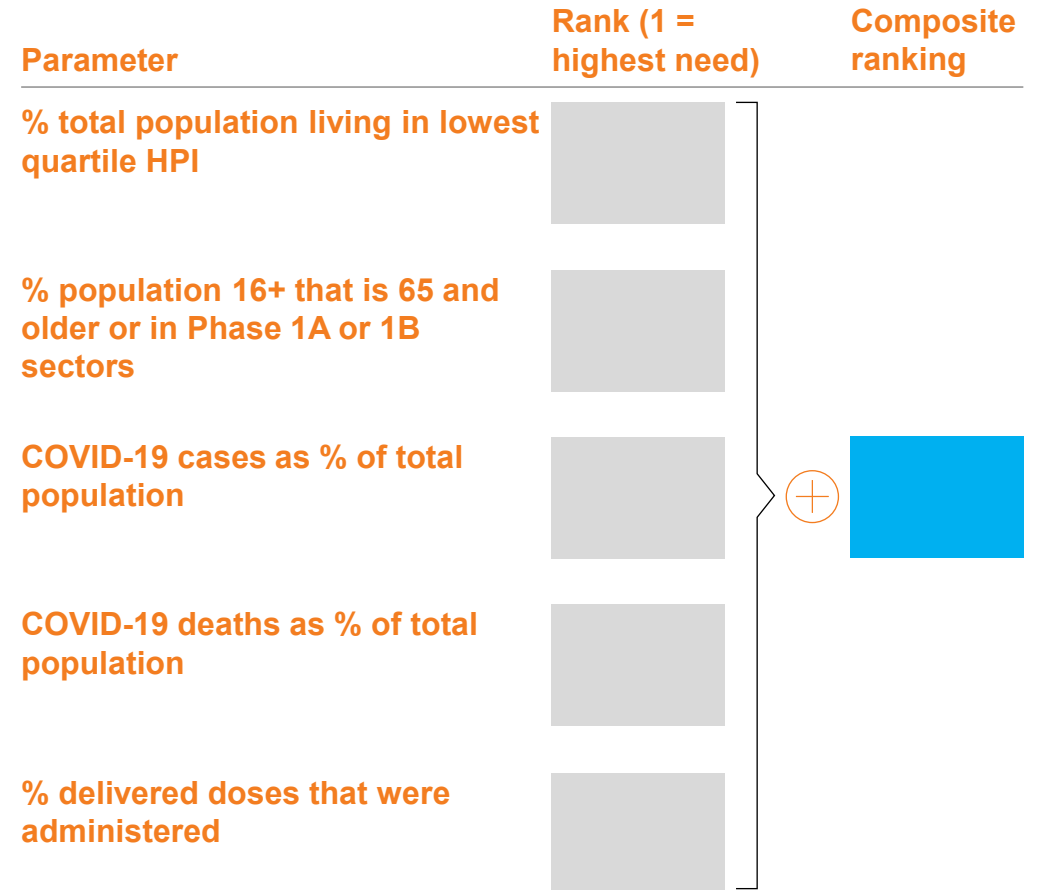
Methodology

1. Selected five parameters to help inform phasing:
 - Population living in the lowest quartile HPI¹
 - Population that is 65 and older or in Phase 1A or 1B sectors (i.e., healthcare, education and childcare, emergency services, food and agriculture)
 - COVID-19 cases as % of population
 - COVID-19 deaths as % of population
 - Received COVID-19 vaccine doses that were administered
2. For each parameter, each county was ranked (from 1 to 58 where 1 is highest need)
3. For each county, ranks were summed across the five parameters to achieve a composite ranking
4. Three transition waves were assigned based on composite rankings

¹ HPI (Healthy Places Index) score considers a variety of factors, including employment rate, home ownership, level of education, healthcare access, automobile access, and cleanliness of environment
Source: Third-Party Administrator (Blue Shield of California) analysis

Calculation for a given county

■ Data ■ Calculation



We will transition to the network in three waves subject to stakeholder feedback

Wave 1

Fresno
Imperial
Kern
Kings
Madera
Merced
Riverside
San Joaquin
Stanislaus
Tulare



Wave 2

Amador¹
Butte
Calaveras
Colusa
El Dorado
Glenn
Inyo
Lake
Lassen
Los Angeles¹
Monterey
Nevada
Orange
Placer



Wave 3

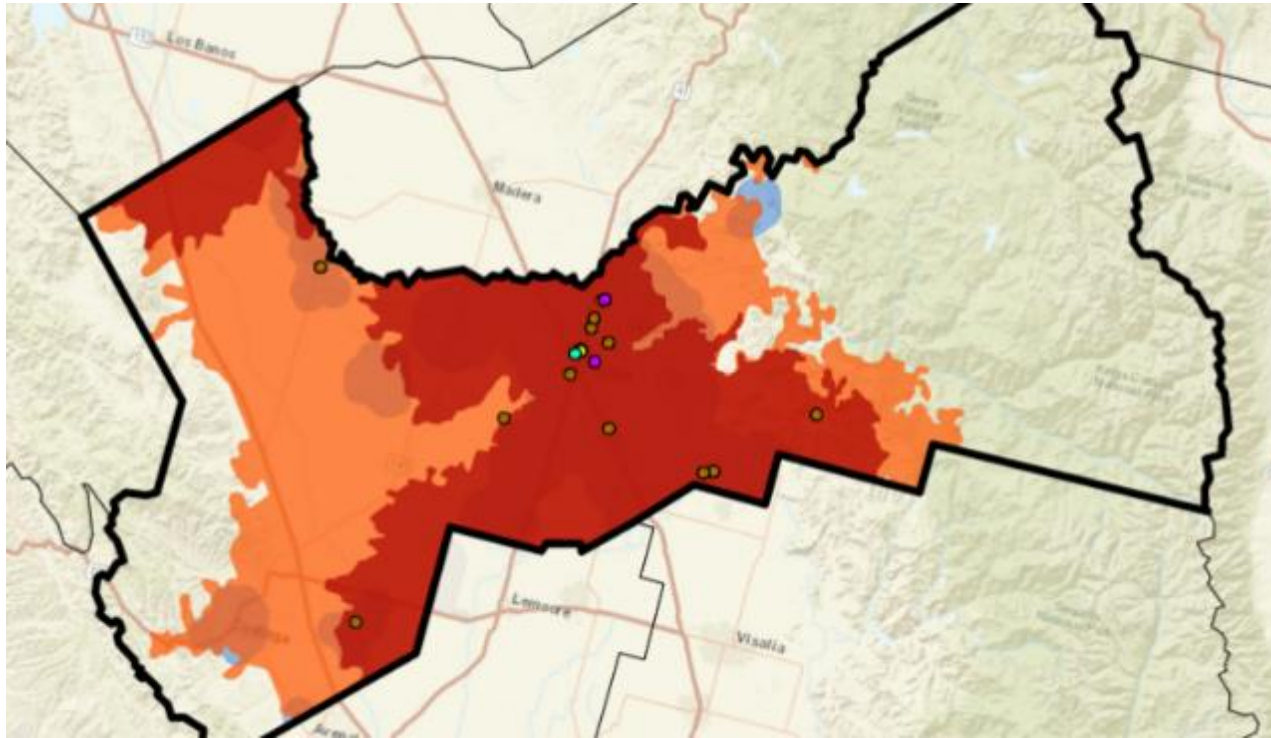
Alameda
Alpine
Contra Costa
Del Norte
Humboldt
Marin
Mariposa
Mendocino
Modoc
Mono
Napa
Plumas
San Francisco
San Mateo

Santa Barbara
Santa Clara
Santa Cruz
Siskiyou
Yolo
Yuba

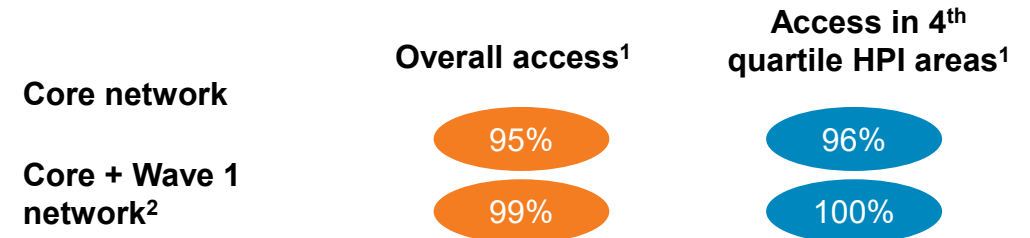
The three Wave go-live dates are to be determined but all waves are expected to be complete by March 31, 2021

¹ Execution of transition for Amador and Los Angeles will occur with Wave 1, though go-live will occur with Wave 2

Core + Wave 1 county network - FRESNO



- Core health systems
- Kaiser
- Optum
- LHD clinics
- Local mega sites
- Local hospitals and health systems
- FQHCs
- Core network coverage area¹
- Core + Wave 1 network coverage area¹
- Areas with access that doesn't meet network requirements¹



Core + Network 1 Providers	Number of sites
Core health systems	
Adventist Health	2
FQHC	
United Health Centers	6
Aria Community Health Center	3
Omni Family Health	3
Clinica Sierra Vista	1
Family HealthCare Network	1
Kaiser	
Kaiser	1
LHD	
UCSF Fresno Mobile Health COVID-19 Equity Project	1
Fresno County Department of Public Health	1
Local hospitals and health systems	
Community Regional Medical Center	1
Sante Physicians	1
Saint Agnes Medical Center	1
Local mega sites	
Fresno county public health - ag mobile	18
Fresno county public health - SNF Mobile	9
Fresno county public health - Rural mobile	3
Fresno county public health - DPH clinic	2
Fresno county public health - UHC/Central	1
Fresno county public health - Gaston	1
Fresno County - Sierra Pacific Orthopedics - Herndon Campus	1
Fresno county public health - DSS clinic	1
Optum	
Optum	1
Grand Total	59

¹ Coverage based on adequacy requirements of 10 miles in urban areas and 30 miles in rural areas ² Providers with TPA contracts: Adventist, Aria Community Health Centers, Clinic Sierra, Family Healthcare Network, Omni Family Health
 Sources: myCAVax provider roster as of 2/9/2021; provider survey responses (week of Feb 8); OptumServe; TPA Network workstream; State provider vaccine data dashboard (as of 2/11/2021); LHJ Mass Vax Surveys (document date: 2/12/2021, received 2/19/2021)

Allocation formula beginning week of March 1

Allocation formula

- 1 Assess the total first doses available for allocation**

Begin with allocation from federal government

Adjust for allocations for State entities (e.g. CDCR) and other urgent unmet needs (e.g. second dose shortages)
 - 2 Apply geographical weighting**

Reflect the currently eligible population by zip code, weighted 70/30 by age (65+) and sector (first responders, food/agriculture sector, education & childcare) respectively.
 - 3 Remaining allocated to zip codes based on eligible population and HPI quartiles**

Weight by HPI quartile such that the lowest quartile HPI zip codes receive a double share (40%) to reflect the disproportionate burden of COVID-19 in these areas
 - 4 All network sites allocated vaccine to meet the zip code allocation defined above.** Site level allocation to consider capacity, zip codes served, and performance including success in vaccinating target populations, inventory-on hand, compliance to network requirements. Sites receive up to available capacity until all doses are allocated for each zip code
- & Total weekly 2nd doses to be allocated based on 1st doses administered**
- Second doses reserved** and sent to providers based on first dose data

How the Third-Party Administrator Supports our Goals

The TPA will support California's 5-point plan for vaccination equity



Allocation

State's five-point plan on equity

Provide ultimate determination and approval of all vaccine allocation with a **focus on equity**

How the TPA will support

Develop and recommend for adoption by the state an **appointment prioritization approach** for State Vaccine Network sites



Network

Ensure that the State Vaccine Network includes appropriate access in **disproportionally impacted communities** (may include extended hours, translation and / or transportation services)

Provide reports to the State on **performance of the network** overall and by provider



Community Partners

Invest in special programs to **support community-based organizations** that are critical to reaching target communities

Support state efforts, including **promoting outreach to disproportionately affected groups**



Data analytics

Use **real-time data analytics** to adjust and intensify targeted efforts and resource allocation to meet equity goals

Perform **timely data analytics** to adjust and intensify targeted efforts and resource allocation to meet equity goals
Provide weekly **Vaccine Allocation Reports** to the state, which include identifying high performing geographies and providers



Public Education

Provide **consistent messaging** and meet Californians where they are in order to reach California's diverse populations

Support state initiatives on public education

We are well on our way with the Wave 1 Network

- ✓ More than 1,000 sites in the network
- ✓ All Multi-County Entities contracted except for one
- ✓ Expanding Optum locations
- ✓ Wave 1 FQHCs are contracted
- ✓ We are finalizing details with options for home bound and disabled Californians
- ✓ We are finalizing agreements with counties, including equity plans that engage community-based organizations

Overview of community-based organizations in California

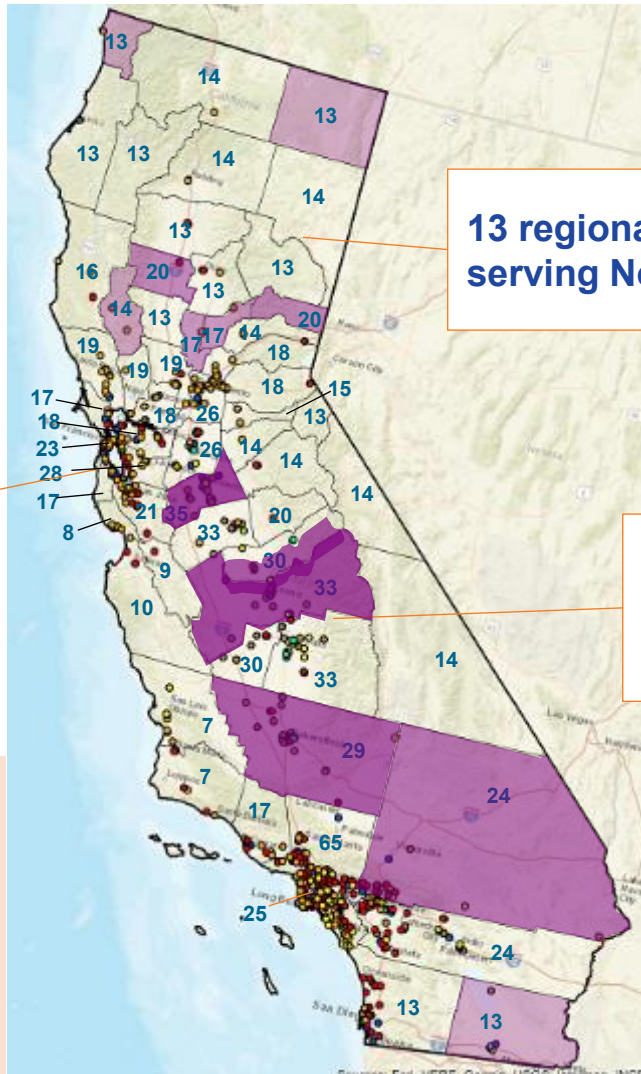
4 statewide organizations

11 regional organizations serving the Bay Area

13 regional organizations serving Northern California

20 regional organizations serving the Central Valley

More CBO presence Less CBO presence



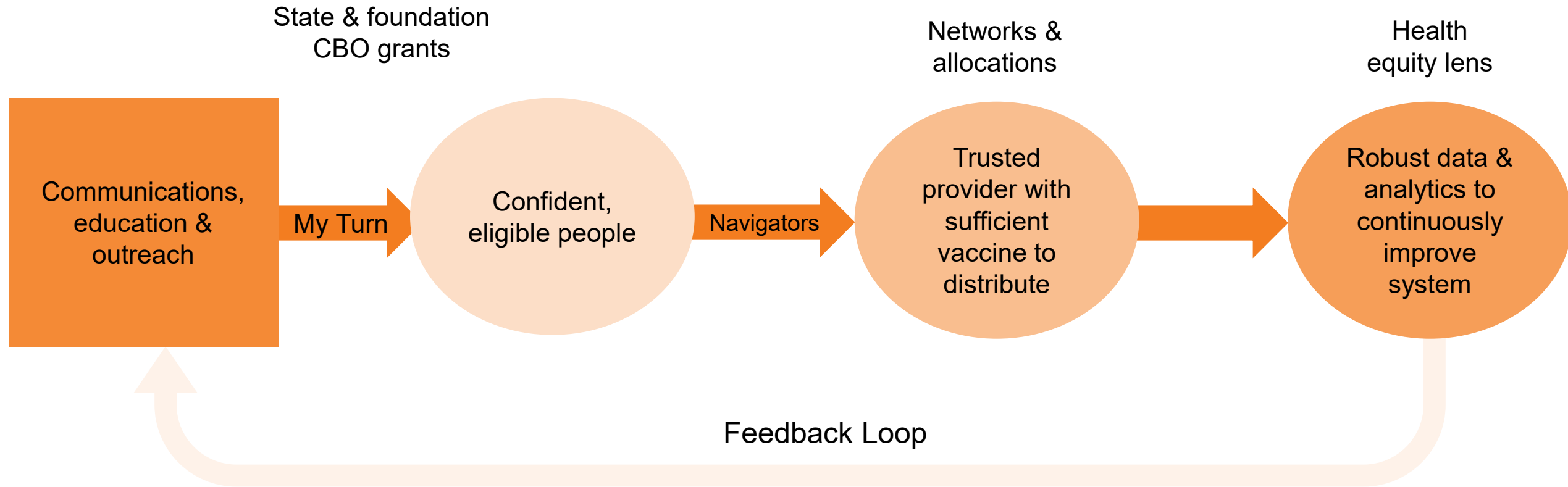
Legend

- FEMA
- Kaiser
- Optum
- Core statewide health system partners
- Wave 1 local health systems and hospitals
- Wave 1 LHDs
- Wave 1 FQHCs
- Wave 1 local mega-sites
- X Number of CBOs serving county
- Counties in lowest quartile HPI (deeper shading reflects higher number of CBOs)

County in lowest quartile HPI	Number of CBOs serving county ¹
Del Norte	13
Fresno	33
Glenn	13
Kern	29
Kings	30
Lake	14
Madera	30
Merced	33
Modoc	13
San Bernardino	24
Sierra	13
Stanislaus	35
Sutter	17
Tulare	33
Yuba	17

1. Includes county-specific and regional organizations
2. Source: CBO and PHI list from Governor's Office, TPA Network workstream

Our efforts will be coordinated and dynamic to meet the needs of communities we are trying to reach



Collaboration with local stakeholders is key to meeting shared goals

- Blue Shield is embedding equity in everything we do, similar to how we are driving diversity, equity and inclusion in our own business operations
- We are partnering with Local Health Jurisdictions to support their equity plans
- In partnership with LHJs and CDPH, we are identifying ways to fill gaps to ensure we meet equity goals

CPCA Federal CHC Vaccine Update

The numbers: FQHCs

- Health Resources Services Administration is directly allocating vaccines to FQHCs
 - Eventually look-alikes too
- First 5 received vaccines last week
- 13 received/are receiving vaccines this week
- 42 total FQs in CA will be receive vaccines by next week
- Goal is that ALL FQHCs/Look-Alikes will be included

The numbers: Vaccines

- Week of 2/22 – shipped 63,000 vaccines to initial cohort of 25
- Week of 3/1 – shipped/will ship 157,700 vaccines to 113 total FQs
- Week of 3/8 – projected to ship 289,000 vaccines to all 250 FQs (will include ALL 3 vaccines as needed/available)

Extra

- Pfizer is the more difficult vaccine to handle – so this will ONLY go to CHCs with cold storage capabilities
- Moderna will still go to those who need to administer second shots
- J&J will also be available

Update on Johnson & Johnson Single Dose Vaccine EUA

Erica Pan, MD, MPH,
State Epidemiologist, Co-Chair

New Vaccine!



[A-Z Index](#)

Search



[Advanced Search](#)

Morbidity and Mortality Weekly Report (*MMWR*)

CDC



The Advisory Committee on Immunization Practices' Interim Recommendation for Use of Janssen COVID-19 Vaccine — United States, February 2021

Weekly / March 5, 2021 / 70(9);329–332

On March 2, 2021, this report was posted online as an MMWR Early Release.

Johnson & Johnson

- Another vaccine is great news!
- Like Pfizer and Moderna, the J&J vaccine is safe and highly effective against preventing death and severe COVID.
- The new vaccine is just one dose and easier to transport and store, so it's an important tool for helping to end the pandemic.
- Some evidence re decreasing transmission & vs variants
- The best vaccine is the one you can get (when you're eligible).



MyTurnVolunteer.ca.gov

MyTurnVolunteer@californiavolunteers.ca.gov

step 1

Receive email and accept your assignment as

Volunteer Director



step 2

Log in
to begin



step 3

Create shifts
for your event



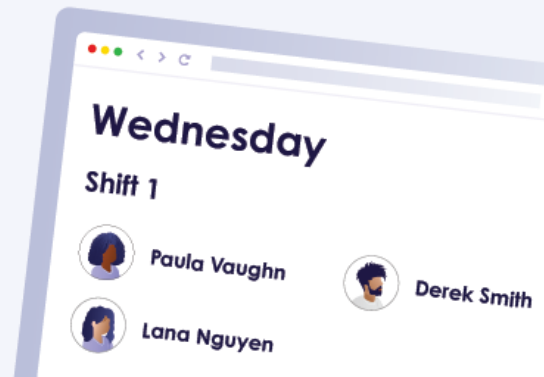
step 4



Select roles
you need by shift

step 5

Verify & confirm
your volunteers



step 6

Meet & direct.
Spread the love.



Dashboard
Volunteer Management Dashboard

As of Mar 3, 2021, 2:46 PM Viewing as Dave Smith

Refresh

Total Volunteers

335

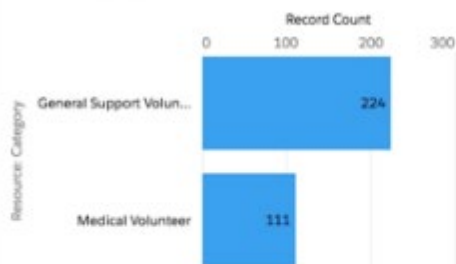
[View Report \(Volunteer Management Report\)](#)

Volunteers per Date



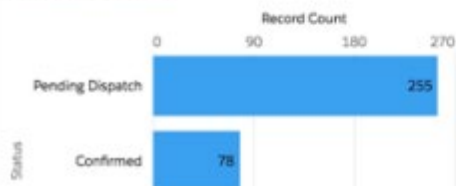
[View Report \(Volunteer Management Report\)](#)

Volunteers by Type

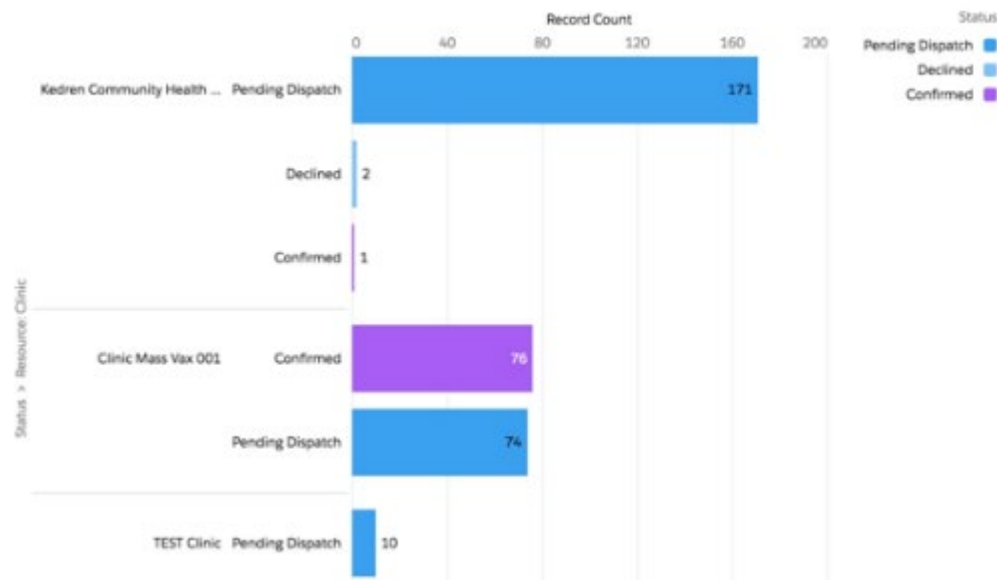


[View Report \(Volunteer Management Report\)](#)

Volunteers by Status



Clinic Volunteers by Status



MY FILTERS Select Saved Filter Region California Resource type Person

- SHOWING JOBS From Mar 01 - Mar 31
- Queued 0
 - Pending Allocation 41
 - Pending Dispatch 18
 - Dispatched 0
 - Ready 0
 - En Route 0
 - On Site 0
 - In Progress 0
 - Complete 0
 - Cancelled 24

Search Jobs

Job number (newest to oldest)

Kedren Volunteers

Volunteer for Kedren Primary Care Clinic
4211 S Avalon Blvd., Los Angeles, CA 90011

12:00pm - 5:00pm, Fri Mar 19, 2021 5hrs

JOB-1199633

Pending Allocation

Kedren Volunteers

Volunteer for Kedren Primary Care Clinic
4211 S Avalon Blvd., Los Angeles, CA 90011

12:00pm - 5:00pm, Thu Mar 18, 2021 5hrs

JOB-1199632

Pending Allocation

Kedren Volunteers

Volunteer for Kedren Primary Care Clinic
4211 S Avalon Blvd., Los Angeles, CA 90011

12:00pm - 5:00pm, Wed Mar 17, 2021 5hrs

JOB-1199631

March 2021

Sun	Mon	Tue	Wed	Thu	Fri	Sat
28 JOB-11...	1 Mar JOB-65... JOB-78... JOB-79... JOB-78... JOB-11...	2 JOB-65... JOB-78... JOB-79... JOB-78...	3 JOB-11... JOB-11... JOB-65... JOB-78... JOB-79... + 3 JOBS	4 JOB-11... JOB-11... JOB-65... JOB-78... JOB-79... + 2 JOBS	5 JOB-11... JOB-11... JOB-65... JOB-78... JOB-79... + 2 JOBS	6
7	8 JOB-11... JOB-11... JOB-11...	9 JOB-11... JOB-11... JOB-11... JOB-11...	10 JOB-11... JOB-11... JOB-11... JOB-11... JOB-11...	11 JOB-11... JOB-11... JOB-11... JOB-11... JOB-11...	12 JOB-11... JOB-11... JOB-11... JOB-11... JOB-11...	13 JOB-78... JOB-78...
14 JOB-78... JOB-78...	15 JOB-11... JOB-11... JOB-11... JOB-11... JOB-11...	16 JOB-11... JOB-11... JOB-11... JOB-11... JOB-11...	17 JOB-11... JOB-11... JOB-11... JOB-11... JOB-11...	18 JOB-11... JOB-11... JOB-11... JOB-11... JOB-11...	19 JOB-11... JOB-11... JOB-11... JOB-11... JOB-11...	20
21	22	23	24	25	26	27
28	29	30	31	1 Apr	2	3

step 1

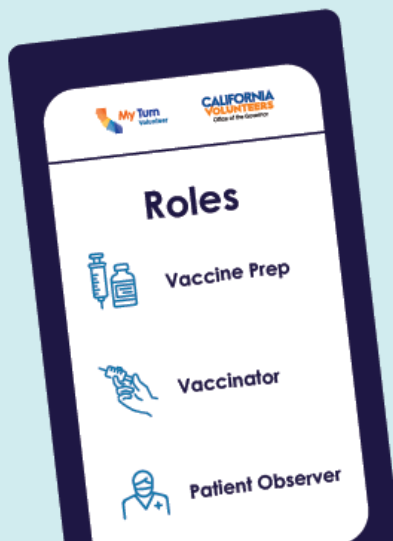
Become a Medical Volunteer

at myturnvolunteer.ca.gov



step 2

Choose a role



step 3

Select shifts



step 4

Provide contact information



step 5

Complete online training.

Verify medical license.



step 6

Complete your shift. Feel the love.

#vaccinateALL58



step 1



Offer your support at
My Turn - Volunteer

step 2



Choose
a role

step 3



Select
your shift

step 4



Enter
**contact
info**

step 5



Confirm
all needed
items before
starting

step 6



Complete
your shift.
Feel the love.

#vaccinateALL58



Help us vaccinate California

Let's speed up COVID-19 vaccinations and save lives.

California Volunteers, Office of the Governor, is calling on Californians to volunteer their time at our COVID-19 vaccination sites and around the community. We need both medical and general support teams. Will you join us?

Sign up and select your shift right here at My Turn - Volunteer. New vaccination sites are being set up over the next few weeks, so if you don't see an opportunity in your area, check back soon. You can also sign up for updates, and we'll notify you.

Join your friends, neighbors and thousands of volunteers across the state who are helping us make sure every Californian who wants a vaccine gets a vaccine.

Register today and schedule a shift at a location near you.

- Medical
- General Support

*First Name

*Last Name

*Zip/Postal Code

*Email

*Phone

- I agree to SMS messages being sent to my mobile phone
- I agree to the [Terms & Conditions](#)

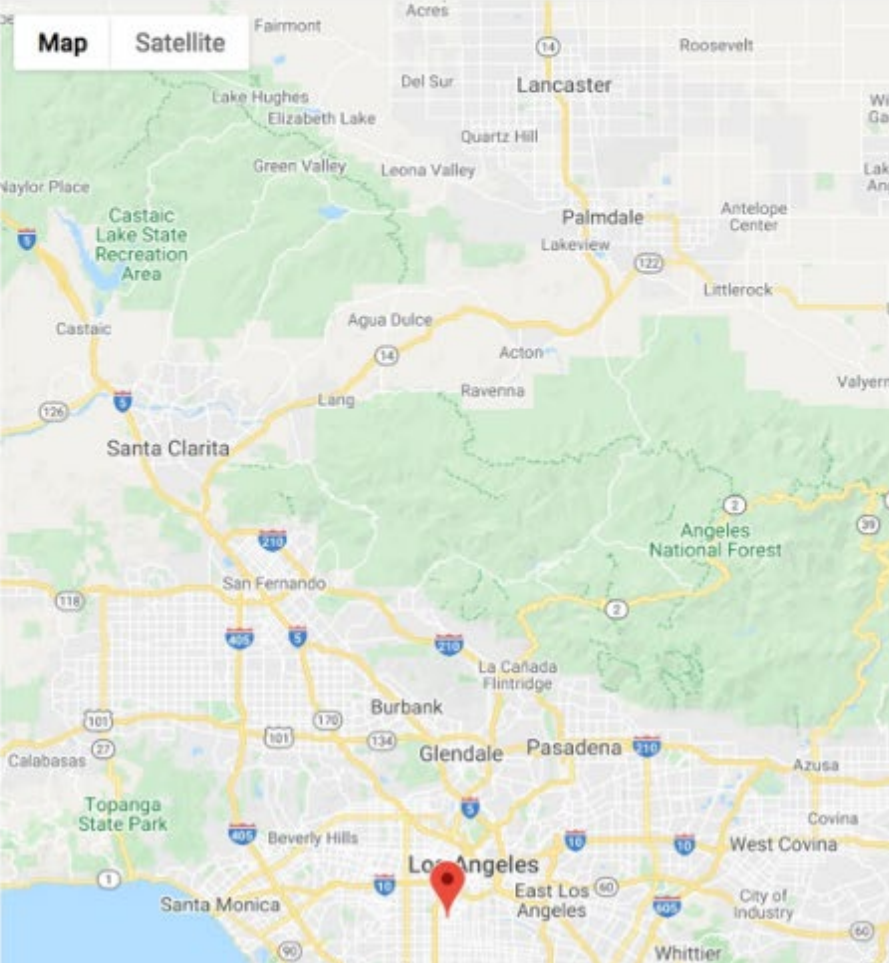
[Register and Volunteer Now](#)

[Browse events and shifts](#)

If you are an organization in need of volunteers for vaccine related activities, contact us at myturnvolunteer@cvsca.gov.

Thank you for stepping up to meet the moment!

Progress indicator: 1 of 4 steps completed.

Add Search Criteria	Select Location	Map
<p>Volunteer Type</p> <p><input checked="" type="radio"/> Medical</p> <p><input type="radio"/> General Support</p> <p>Location</p> <p>90011</p> <p>Skills Select All Clear All</p> <p><input checked="" type="checkbox"/> Patient Observer</p> <p><input checked="" type="checkbox"/> Vaccinator</p> <p><input checked="" type="checkbox"/> Vaccine Prep</p>	<p>Kedren Community Health Center Inc.</p> <p>0 miles</p> <p>4211 S Avalon Blvd., Los Angeles, CA 90011</p> <p>Select</p>	

Thank you for stepping up to meet the moment!

[← Back to Step 1](#)

Select Shifts

Showing Jobs by Kedren Community Health Center Inc. filtered by Patient Observer and Vaccinator and Vaccine Prep

03/08/2021 ▼

Monday, 3/8

8:00 AM - 12:30 PM

Required Skills: Vaccinator
3 Shifts Available

8:00 AM - 12:30 PM

Required Skills: Vaccine Prep
3 Shifts Available

8:00 AM - 5:00 PM

Required Skills: Vaccinator
3 Shifts Available

8:00 AM - 5:00 PM

Required Skills: Vaccine Prep
3 Shifts Available

12:00 PM - 5:00 PM

Required Skills: Vaccinator
2 Shifts Available

12:00 PM - 5:00 PM

Required Skills: Vaccine Prep
3 Shifts Available

Selected Shift Summary

Thank you for stepping up to meet the moment!

[← Back to Step 2](#)

Personal Information

*First Name	<input type="text"/>	*Last Name	<input type="text"/>
*Date of Birth	<input type="text"/>	*Email	<input type="text"/>
*Phone	<input type="text"/>	<input type="checkbox"/> Contact me via SMS	
Volunteer Type	Medical	*Primary Spoken Language	<input type="text" value="Select"/>
Secondary Spoken Language	<input type="text" value="Select"/>	Third Spoken Language	<input type="text" value="Select"/>
<input type="checkbox"/> I have received my first vaccination		<input type="checkbox"/> I have received my second vaccination	
<input type="checkbox"/> I certify that I have a valid ID			

Mailing Address

Street	<input type="text"/>	*City	<input type="text"/>
*State	<input type="text"/>	*Zip	<input type="text"/>
Country	<input type="text"/>	Country	<input type="text"/>
Ability to Travel	<input type="text" value="Select"/>		

Medical Information

Medical License #	<input type="text"/>	Medical License Type	<input type="text" value="Select"/>
-------------------	----------------------	----------------------	-------------------------------------

[Terms and Conditions](#)

Selected Shift Summary

Kedren Community Health Center Inc.
Mon, 3/8 | 8:00 AM - 12:00 PM
Required skills: Vaccine Prep

Kedren Community Health Center Inc.
Mon, 3/8 | 12:00 PM - 5:00 PM
Required skills: Vaccine Prep

[Complete Booking](#)



MyTurnVolunteer.ca.gov

MyTurnVolunteer@californiavolunteers.ca.gov

Closing Comments

- Next Meetings
 - March 17, 2021 from 3:00 – 5:00pm
 - April 14, 2021 from 3:00 – 5:00/6:00pm TBD
 - May 12, 2021 from 3:00 – 5:00/6:00pm TBD
- Agenda for Next Meeting
- How to Make Public Comment:
COVID19VaccineOutreach@cdph.ca.gov
- Adjourn