



Vaccinate **ALL 58**

Together we can end the pandemic.
Juntos podemos acabar con la pandemia.
我們可以一起終止疫情。

California Health and Human Services Agency (CHHS) California Department of Public Health (CDPH)

Community Vaccine Advisory
Committee

Meeting #12

March 17, 2021

3:00 PM – 5:00 PM

Welcome to the Community Vaccine Advisory Committee

Nadine Burke Harris, MD, MPH,
California Surgeon General, Co-Chair

Erica Pan, MD, MPH,
State Epidemiologist, Co-Chair

Meeting Process

- All meetings will be virtual and interactive; cameras on; mute until ready to speak
- Use hand raise icon when you are ready to make comments/ask questions
- Consistent attendance by members; no delegates or substitutes
- Today we will be having ASL Interpreter and closed captioning for members
- Website - <https://www.cdph.ca.gov/Programs/CID/DCDC/Pages/COVID-19/Community-Vaccine-Advisory-Committee.aspx>
- Public listen-in mode via telephone at each meeting in English and Spanish
- Meeting will now be live-streamed on YouTube – https://www.youtube.com/channel/UCkNEUklwtlc_kPenEZMUIOw
- Public comment via written comments COVID19VaccineOutreach@cdph.ca.gov; will be discussed with Committee at subsequent meetings; all public comments received will be posted weekly on the CDPH website
- Technical issues with Zoom – put questions in chat

Summary of Public Comments Since Meeting #11



Opening Comments

Nadine Burke Harris, MD, MPH,
California Surgeon General, Co-Chair

Erica Pan, MD, MPH,
State Epidemiologist, Co-Chair

Update on Vaccine Supply, Allocation Guidelines and Implementation of Accessibility and Federal Partnerships

Erica Pan, MD, MPH, State Epidemiologist, Co-Chair

Nancy Bargmann, Department of Developmental Services

COVID-19 Overview

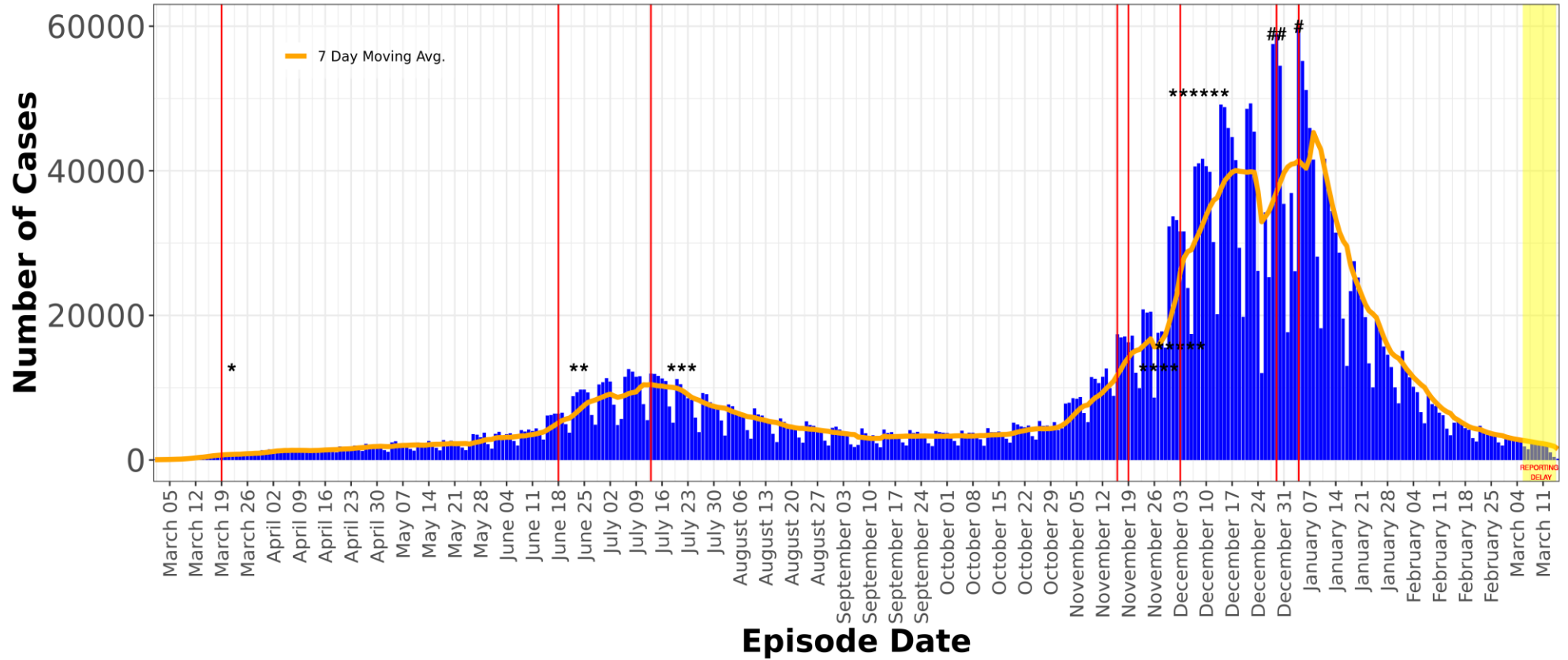
As of March 16, California has 3,530,055 confirmed cases of COVID-19, resulting in 55,372 deaths.

Cases	Deaths	Tests	Vaccines Administered
3,530,055 Total	55,372 Total	51,351,366 Total	12,637,197 Total
1,260 Today	42 Today	167,229 Today	
↘ 6.1 New cases per 100K	↘ 0.1 New deaths per 100K	↘ 1.8% Test positivity	

Updated March 16, 2021 at 10:00 AM with data from March 15, 2021

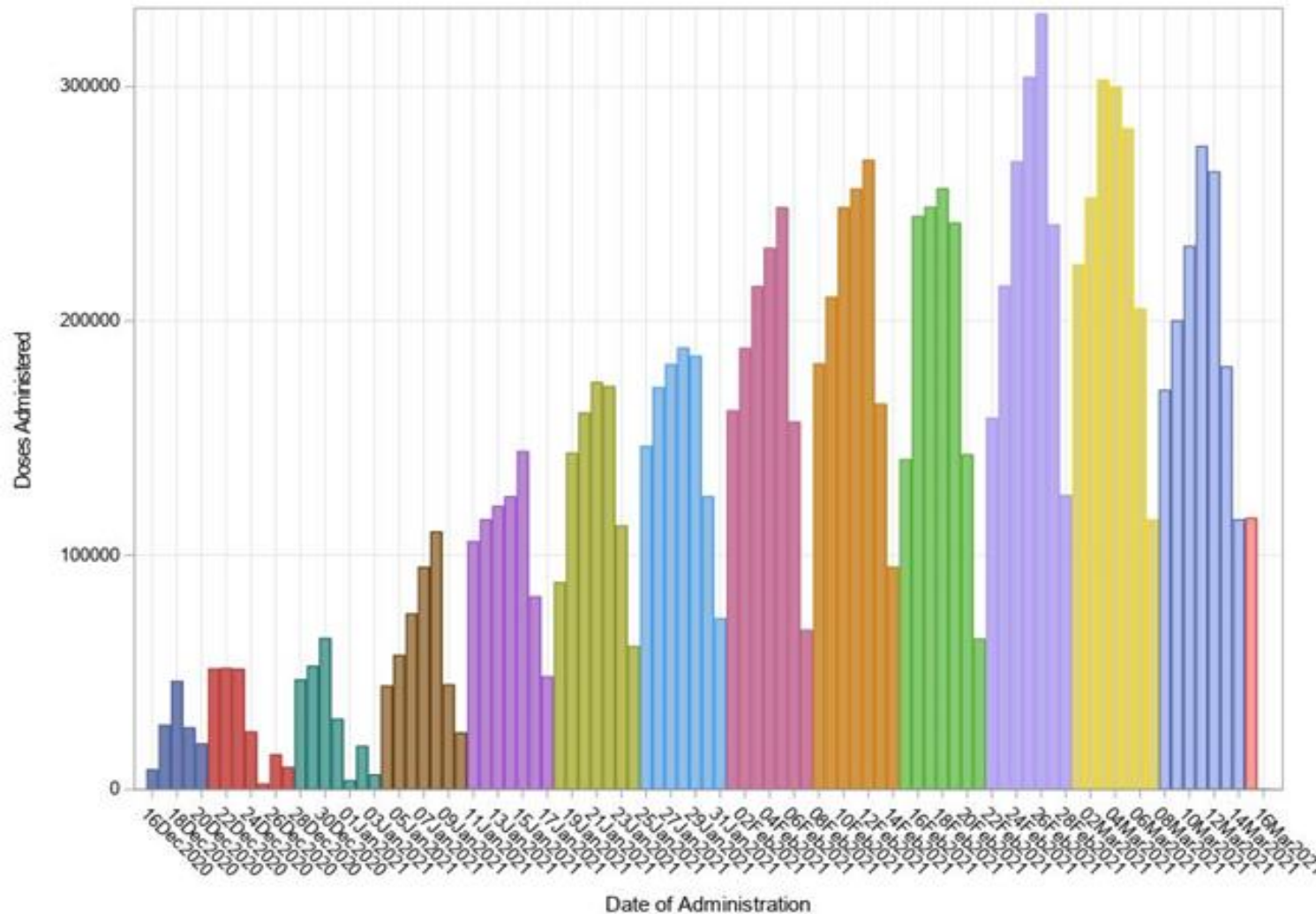
As of March 16, 2021

7-Day Average of Cases by Episode Date, Total Hospitalizations, Total ICU Admissions, and Deaths by Date of Death Associated with COVID-19 per Day



*3/19: Statewide Stay-At-Home Order
 **6/18: Statewide Mask Order
 ***7/13: Statewide Re-Closure of Bars
 ****11/16: Emergency Brake
 *****11/19: Limited SAHO
 # peak1: 60,073 cases (2021-01-04); ## peak2: 58,979 cases (2020-12-29);
 ***** 12/3 regional stay at home order
 2021-03-16 16:56:45

Vaccine Doses Administered by Day



As of March 16, 2021

Total Doses Administered:
12,637,197

Vaccine Equity Metric

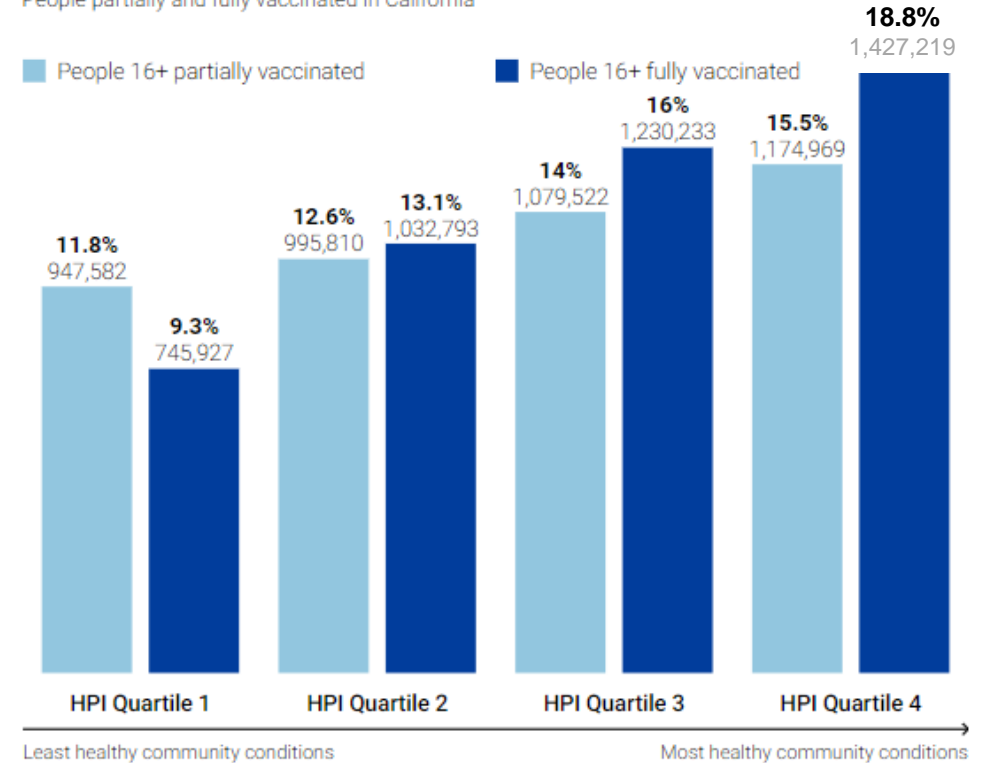
This graph compares COVID-19 vaccinations among four different levels of community health.

It uses [Healthy Places Index \(HPI\)](#) measures in a zip code area that can impact health, like income, education, and access to health care. Areas are then given a score, ranging from least healthy community conditions (Quartile 1) to most healthy community conditions (Quartile 4).

The Vaccine Equity Metric also creates scores for areas that don't have an HPI score

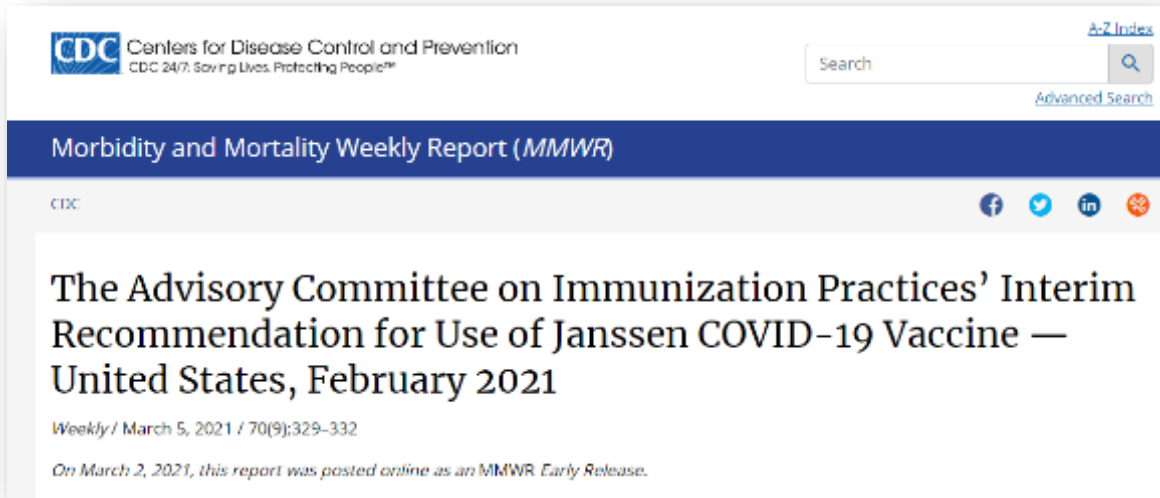
Vaccinations by number of people vaccinated

People partially and fully vaccinated in California



Updated March 17, 2021 with data from March 16, 2021. "Partially vaccinated" represents individuals who have received at least one dose of the Pfizer or Moderna vaccine. "Fully vaccinated" represents individuals who have received two doses of the Pfizer or Moderna vaccine, or one dose of the Janssen vaccine. Percentage for number of people calculated as people vaccinated in a quartile divided by population of people 16 years of age and over in a quartile.

Janssen/Johnson & Johnson Vaccine



“One and Done”

- Another vaccine is great news!
- Like Pfizer and Moderna, the J&J vaccine is safe and highly effective against preventing death and severe COVID.
- The new vaccine is just one dose and easier to transport and store, so it's an important tool for helping to end the pandemic.
- Some evidence re decreasing transmission & vs variants.
- The best vaccine is the one you can get (when you're eligible).

Doses Administered in California



COVID-19: Vaccine Dashboard

Statewide



12,172,948 (77.5%) Doses administered
194,377 Average doses per day

4,088,185 (12.6%) People partially vaccinated
4,147,604 (12.8%) People fully vaccinated



1,918,851 Doses on hand
(10 days of inventory)



15,702,230 Doses Delivered

2,182,300 CDC Pharmacy Doses Delivered

See [Data Dictionary](#) for Details.

Doses Administered by County of Residence

County

(All) ▼



Los Angeles	2,955,407
San Diego	1,253,857
Orange	1,005,143
Riverside	613,475
Alameda	588,979
Santa Clara	581,474
San Bernardino	472,802
Contra Costa	425,595
Sacramento	396,234
San Francisco	339,647
San Mateo	299,894
Ventura	260,597
Fresno	254,936
Sonoma	192,514
Kern	187,965

As of March 16, 2021

Individuals with
2 doses:
4,344,182

(13.4% of
Californians over
16 years old)

Data: 3/14/2021 11:59pm | Posted: 3/15/2021

Who Can Get Vaccinated?

- **Eligible groups**
 - Health care workers
 - Long term care and skilled nursing facility residents
 - Californians 65 years and older
 - Food and agriculture
 - Childcare and education
 - Emergency responders
- **New:**
 - Those in high-risk congregate living spaces
 - Certain public transit workers
- As of **March 15**, healthcare providers may use their clinical judgement to vaccinate individuals aged 16-64 who are deemed to be at the very highest risk to get very sick from COVID-19:
 - Severe health conditions
 - Disabilities or illness

The Disability Community

- Regional Centers (RC) are making contact with all consumers ages 16 and up who are not already known to be vaccinated, to provide and collect information and offer assistance
- RC and Independent Living Centers (ILC) are collaborating wherever possible to increase vaccination access
- Blue Shield assisted in connecting County public health departments and RC/ILCs this morning, for addressing HPI quartile zip code-level vaccination efforts
- Vaccination data will be posted by the Department
 - Data has limitation, such as comfort of reporting by families, data entry lags
 - The Department is encouraged by the pace of what is reported
- Examples of targeted efforts:
 - San Andreas RC = 600 doses today and tomorrow in Watsonville
 - CVRC = 300 in Coalinga and 400 at Tulare Ag Center
 - Golden Gate = 800 last weekend
 - LA County Public Health coordinating with all seven RCs

Blueprint for a Safer Economy

- Updated on March 12, 2021
- Incorporates vaccination rates to open California

Current: Because CA has **2 million** people vaccinated in HPI quartile 1

The case rate, test positivity, and health equity metric thresholds must be met to move forward toward more reopening.

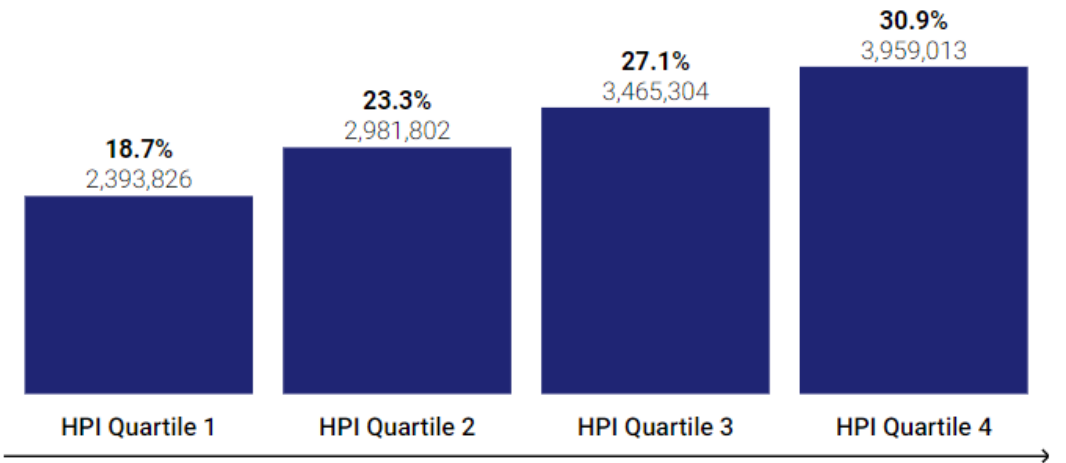
WIDESPREAD	SUBSTANTIAL	MODERATE	MINIMAL
<ul style="list-style-type: none"> • More than 10.0 daily new cases (per 100k)* • More than 8.0% positive test for entire county** 	<ul style="list-style-type: none"> • 4.0 – 10.0 daily new cases (per 100k)* • 5.0 – 8.0% positive tests for entire county** • Less than 8.1% positive tests for health equity quartile** 	<ul style="list-style-type: none"> • 1.0 – 3.9 daily new cases (per 100k)* • 2.0 – 4.9% positive tests for entire county** • Less than 5.3% positive tests for health equity quartile** 	<ul style="list-style-type: none"> • Less than 1.0 daily new case (per 100k)* • Less than 2.0% positive tests for entire county** • Less than 2.2% positive tests for health equity quartile**

If both the test positivity and health equity metric are especially low, and the case rate is declining but does not yet meet less restrictive tier's level, a county can still move forward towards more reopening. See [rules on accelerated progression](#).

Vaccinations by doses administered

Number of vaccine doses given in California

■ % of total and number of doses administered



Least healthy community conditions

Most healthy community conditions

Updated March 17, 2021 with data from March 16, 2021. Excludes doses without an HPI score, including out-of-state residents or records with missing zip codes. Percentage for doses calculated as doses administered in a quartile divided by total doses administered statewide.

Federal Retail Pharmacy Program (FRPP)

Overview

- Cumulative dose administered at retail stores as of 3/8/21:
 - CVS: 313,150
 - Rite Aid: 189,976
 - Walgreens: 124,266
 - Albertsons: 205,692
- Current eligible groups: 65+, healthcare workers, LTC residents and staff, food and agriculture, education and childcare, and emergency services
 - A directive issued by HHS for all pharmacy partners to prioritize pre-K-12 teachers, school staff and childcare workers during the month of March
- Effective 3/15, group 16-64 with comorbidity will be eligible

Federal Retail Pharmacy Program (FRPP)

- An additional **36,270 doses** of Pfizer were allocated for the week of 3/7/21
- CVS expanded additional **119 store locations**; as program expands with more supply, pharmacy partners will continue to expand locations
- **Total 286,610 doses allocated for the week of 3/7/21** (see Table 1)
- Entering the week of 3/14/21 allocation, there will be
- Janssen doses as well as an increase in Pfizer doses
- With the expansion of Janssen doses, four LTC
- pharmacy partners will be activated this week:
 - MHA, Innovatix, GeriMed and Cardinal
 - PharMerica is under Innovatix network

Table 1

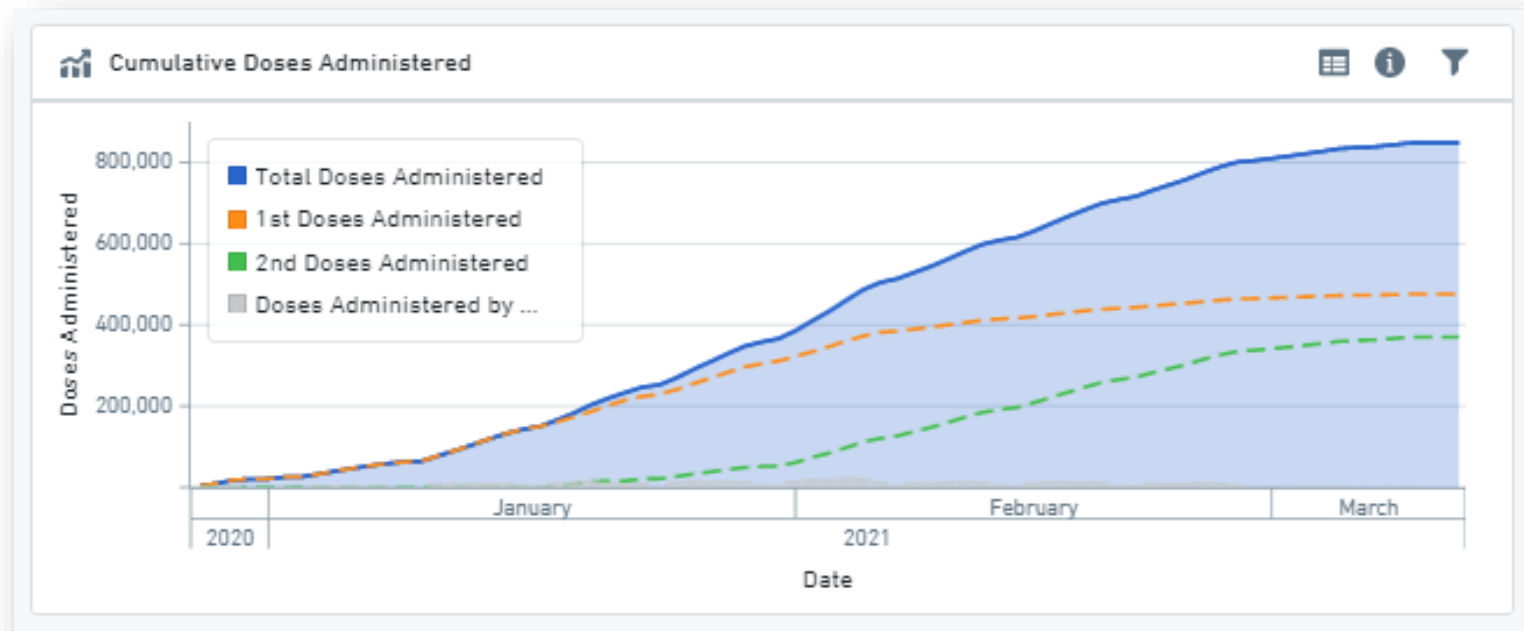
Pharmacy Partner	Pfizer	Moderna	TOTAL
CVS	64,350	81,900	146,250
Rite Aid	21,060	37,400	58,460
Walgreens	64,350		64,350
Albertsons	17,550		17,550

Federal Long Term Care Facility Partnership

- CVS and Walgreens are conducting 3 vaccination clinics on-site - program ending March 31st
- Skilled Nursing Facilities (SNFs) started first 12/28/2020
- Assisted Living Facilities (ALFs) and other facilities started 1/11/2021

As of 3/12/21 CDC data:

- **849,168** total doses administered
 - 477,254 first doses
 - 371,914 second doses
 - 433,889 resident doses
 - 415,279 staff doses



Federally Qualified Health Center (FQHC) Initiative

- Health Resources and Services Administration (HRSA) and CDC partnership to directly allocate limited supply of COVID-19 vaccine – this separate federal allocation is deployed in coordination with states
- Incrementally started at select HRSA-funded health centers that specialize in caring for hard-to-reach and disproportionately affected populations including
 - Individuals experiencing homelessness
 - Public housing residents
 - Migrant/seasonal agricultural workers
 - Patients with limited English proficiency
- Phase 1 increases access to vaccines for 250 health centers nationwide
- Through a phased, 4-week rollout, CA now has ~40 FQHC organizations participating that serve close to 200 individual sites.
- Cumulatively, CA has received close to 185,000 doses over the last four weeks.
- FAQs, list of participating sites and additional information available at [HRSA website](#).

Achieving and Monitoring Equity

Nadine Burke Harris, MD, MPH, California Surgeon General, Co-Chair

Peter Long, Blue Shield of California

Kimberley Goode, Blue Shield of California

Equitably Accelerating Vaccine Distribution and Administration for Californians

Third-Party Administrator Update

The TPA Supports California's 5-Point Plan for Vaccination Equity

State's five-point plan on equity

How the TPA will support



Allocation

Provide ultimate determination and approval of all vaccine allocation with a **focus on equity**

Develop and recommend for adoption by the state an **appointment prioritization approach** for State Vaccine Network sites



Network

Ensure that the State Vaccine Network includes appropriate access in **disproportionally impacted communities** (may include extended hours, translation and / or transportation services)

Provide reports to the State on **performance of the network** overall and by provider



Community Partners

Invest in special programs to **support community-based organizations** that are critical to reaching target communities

Support state efforts, including **promoting outreach to disproportionately affected groups**



Data analytics

Use **real-time data analytics** to adjust and intensify targeted efforts and resource allocation to meet equity goals

Perform **timely data analytics** to adjust and intensify targeted efforts and resource allocation to meet equity goals
Provide weekly **Vaccine Allocation Reports** to the state, which include identifying high performing geographies and providers



Public Education

Provide **consistent messaging** and meet Californians where they are in order to reach California's diverse populations

Support state initiatives on public education

The TPA is Supporting Allocation Recommendations and an Enhanced Network

Increased allocation

- Use data to recommend where to allocate doses to the first quartile Healthy Places Index zip codes to ensure distribution of the vaccine meets the disease burden as defined by the state
- Recommend prioritized appointments for coded clinics to meet equity goals or labor groups as determined by the state
- Work with the state to ensure operational readiness to support allocation eligible groups as defined by the state
 - Comorbidities and those with disabilities
 - Eligibility does not mean immediate access due to supply

Enhanced network

- Proximity to providers in every community
- Increased access through MCEs that have agreed to vaccinating community members, not just their own members
- FQHCs and other community clinics as trusted providers
- Local independent pharmacies In hard hit areas with limited access,
- Mobile solutions
- Enhanced coverage in first HPI quartile zip codes
- Extended hours and onsite solutions for some groups

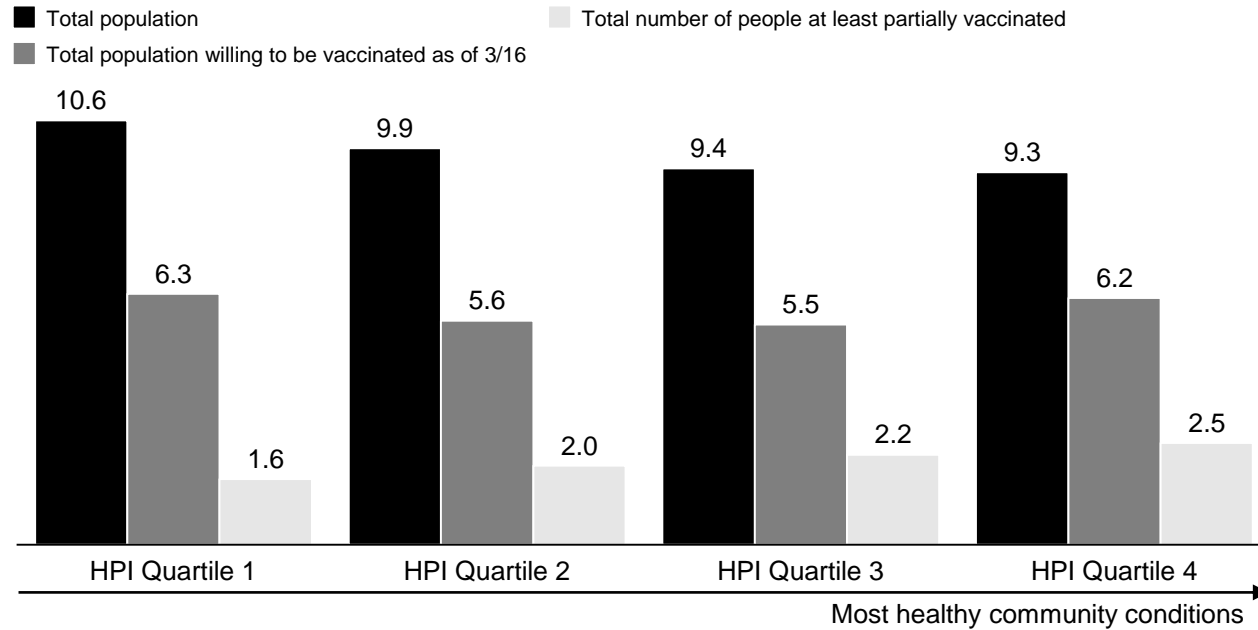
We are Developing Clear Ways to Measure Our Progress

ILLUSTRATIVE DRAFT PRELIMINARY

MAR 16, 2021

Who is receiving doses?

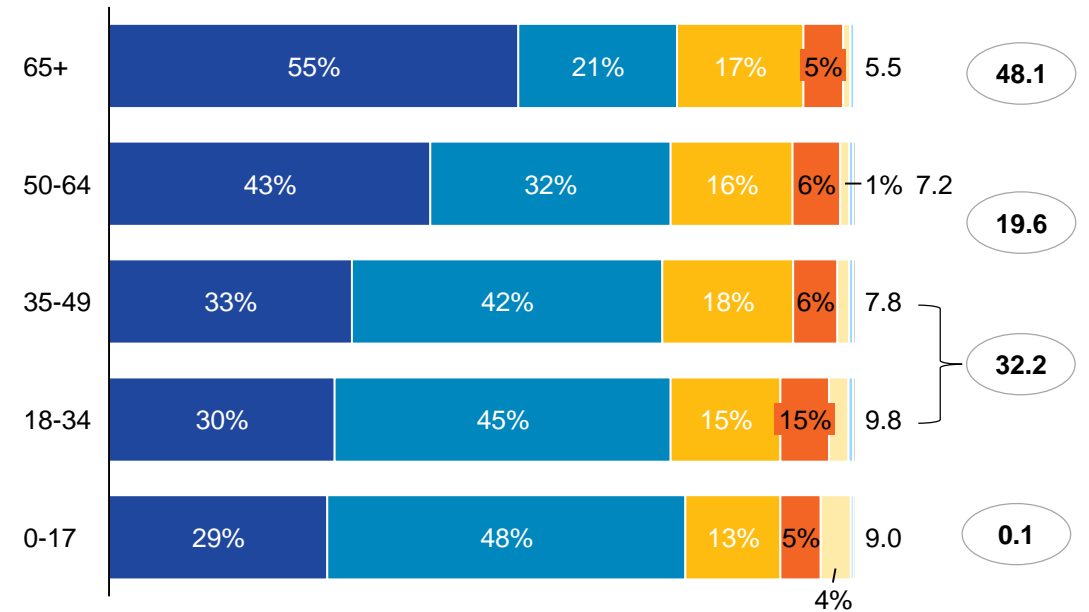
Distribution of eligibility, willingness, and dose administration as of 3/16, by HPI quartile, M



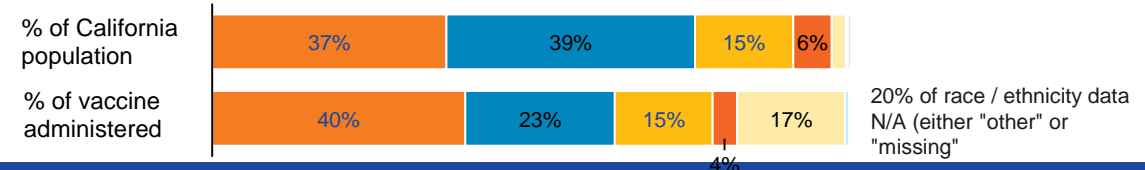
HPI Quartile	Population willing to be vaccinated as of 3/16, %	Population willing to be vaccinated as of 1/25, %
HPI Quartile 1	59.1	38.4
HPI Quartile 2	56.5	46.9
HPI Quartile 3	58.5	46.9
HPI Quartile 4	66.2	47.3

Age distribution of California population, by race/ethnicity, M

White Asian Multi-race AI/AN²
 Latino Black NHP1¹ % of total vaccines administered



Total vaccines administered, by race/ethnicity, %



Data Will Also Inform Where We Add Supports to Ensure Equitable Access

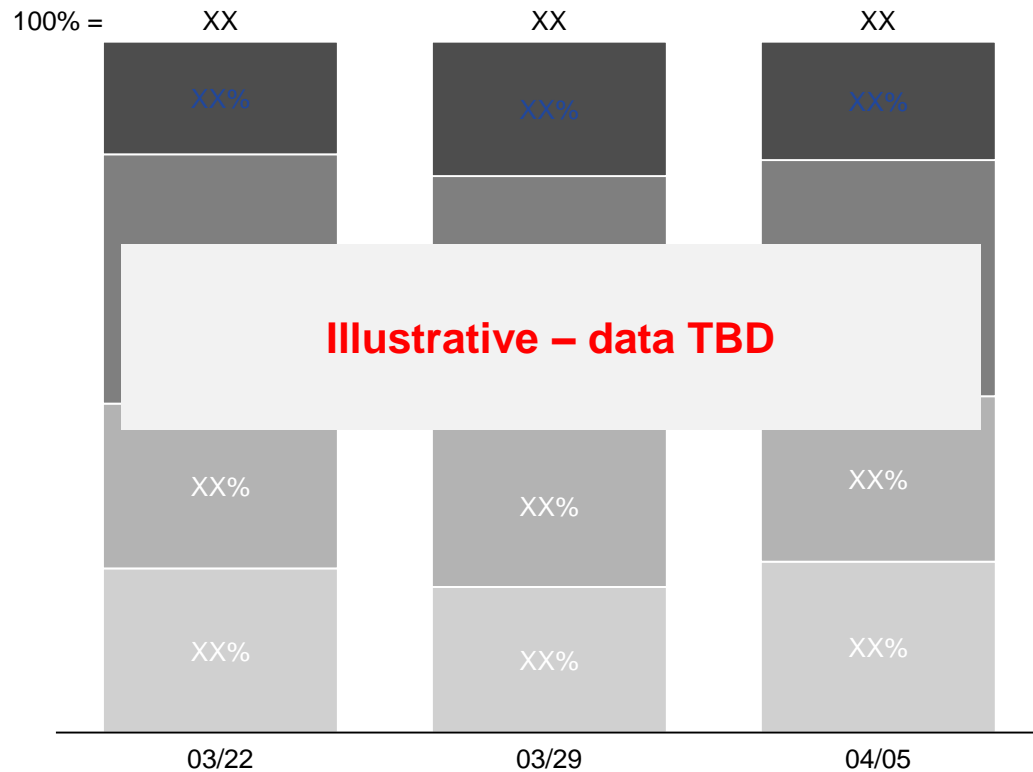
DRAFT PRELIMINARY ILLUSTRATIVE

MAR 16, 2021

Where are doses being allocated?

Number of doses allocated by HPI quartile, thousands

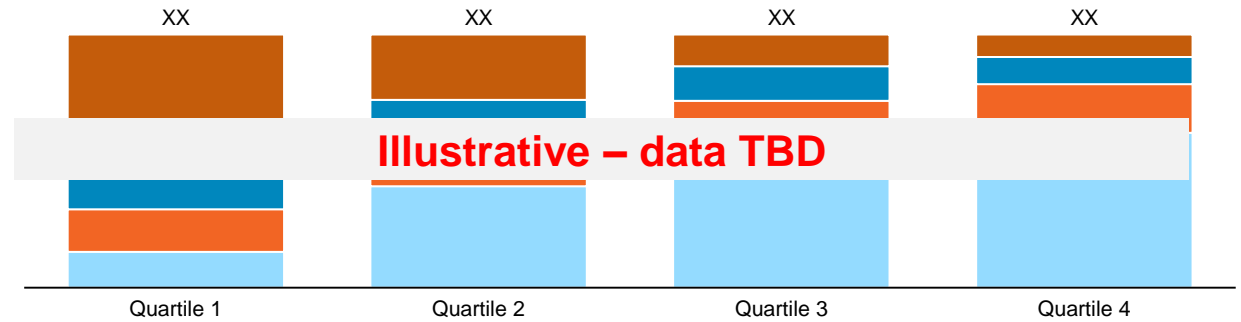
■ Quartile 1 ■ Quartile 2 ■ Quartile 3 ■ Quartile 4



In which HPI quartiles are different types of provider sites located?

Contracted provider sites, by HPI quartile of site location¹

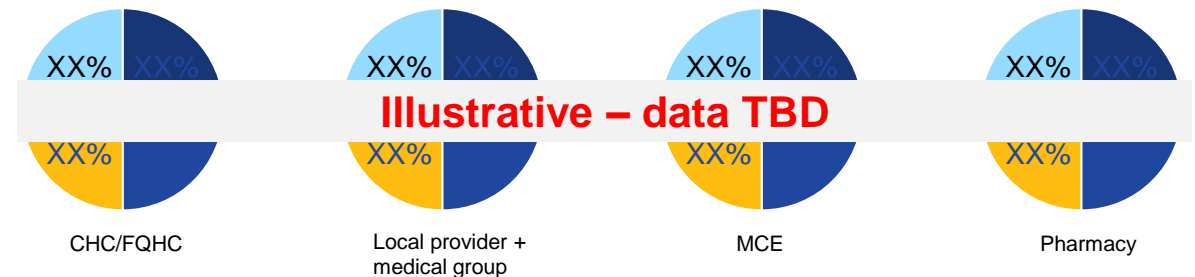
■ CHC/FQHC ■ Local provider + Medical group ■ MCE ■ Pharmacy



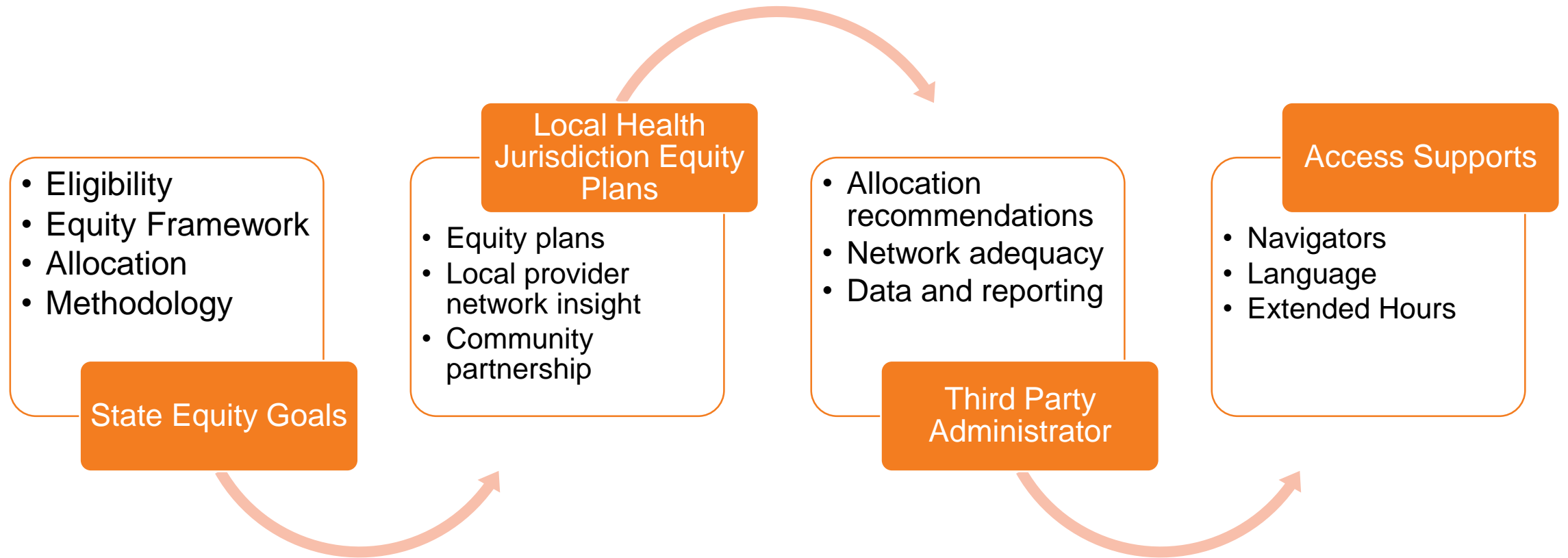
To which HPI residents are providers located in HPI quartile 1 serving vaccine?

HPI quartile of individuals receiving doses from HPI Quartile 1 providers, by provider type

■ Quartile 1 Residents ■ Quartile 2 Residents ■ Quartile 3 Residents ■ Quartile 4 Residents



We are Collaborating to Meet the Needs of Communities



Update on Community Engagement and Outreach Efforts

Marcela Ruiz, CDSS

Martha Dominguez, CDPH



Vaccinate **ALL 58**

Together we can end the pandemic.

Martha E. Dominguez MPH, PhD, MCHES, CLC
California Department of Public Health

Research Framework: Attitudes and Beliefs

Qualitative

- Literature Review
- Stakeholder In-Depth Information Interviews (15)
- Dyad & Triad Generation Online Sessions (12)
- Online Discussion Boards (105 individuals)
- Multi-ethnic Focus Groups (7 groups)

Quantitative

- Monthly Tracking Survey (12 monthly waves)

Quantitative: Tracking Survey

- The tracking survey : (1) Pre-Campaign Benchmark (Wave 0) followed by twelve (12) monthly waves

The type of survey questions:

- Direct question on likelihood of getting vaccinated.
- Indirect questions about COVID-19 and vaccines, to gauge truthfulness of answer to direct question on likelihood of getting vaccinated.
- Surveys are conducted online and via telephone to ensure coverage of harder-to-reach residents.
- A minimum sample size of 1200 participants in primary three regions in California: northern, central, and southern.

What we learned:

- Measures will allow us to track shifts in vaccine hesitancy throughout the year.
- Measures will be provided for 1) the California population as a whole and 2) for specific sub-populations. The sub-populations were selected based on findings from general studies of vaccine hesitancy and studies specific to the COVID-19 vaccines. The sub-populations are:
 - Black / African American
 - Asian / Pacific Islander
 - English-dominant and bilingual Hispanic
 - Spanish-dominant Hispanic

Research: Factors Empowering Communities to Get Vaccine

Trust

Have The Right Messenger

Disseminate Information

Humanize Lived Experiences

Campaign Strategy

"Let's Get to ImmUnity" will meet people where they are and offer answers (and reassurance) in relevant, digestible forms.



Creative testing results

- In a survey that included in-language and priority audiences, we found that “Let’s Get to Immunity” performed very well against key success metrics.
- Survey respondents clearly took away that the vaccine is safe and effective, and perhaps even more promising, they reported feeling understood, informed, and ultimately motivated to get the vaccine.
- The findings validated the insights that informed the work, including how important it is for each audience group to see themselves and people like them represented in the vaccine development and rollout process.

Multicultural. Latino, API Creatives

Let's get you there. Let's get to immunity.

CLINICAL TRIALS PROVE THAT THE VACCINE IS EFFECTIVE FOR ADULTS OF ALL AGES AND ETHNICITIES.

VaccinateAll58.com
CA DEPT. OF PUBLIC HEALTH

The COVID vaccine was possible thanks to decades of scientific research.

SCIENTISTS HAVE BEEN RESEARCHING HOW TO MAKE VACCINES LIKE THIS ONE FOR DECADES, SO A LOT OF THE GROUNDWORK WAS ALREADY LAID. LET'S GET TO IMMUNITY.

VaccinateAll58.com
CA DEPT. OF PUBLIC HEALTH

California está a favor de la inmUNIDAD.

VERIFICA TU ELEGIBILIDAD Y HAZ UNA CITA PARA PONERTE LA VACUNA CONTRA EL COVID-19 CUANDO SEA TU TURNO.

VaccinateAll58.com
DEPARTAMENTO DE SALUD PÚBLICA DE CALIFORNIA

**基於數十年科學研究
新冠疫苗終於問世**

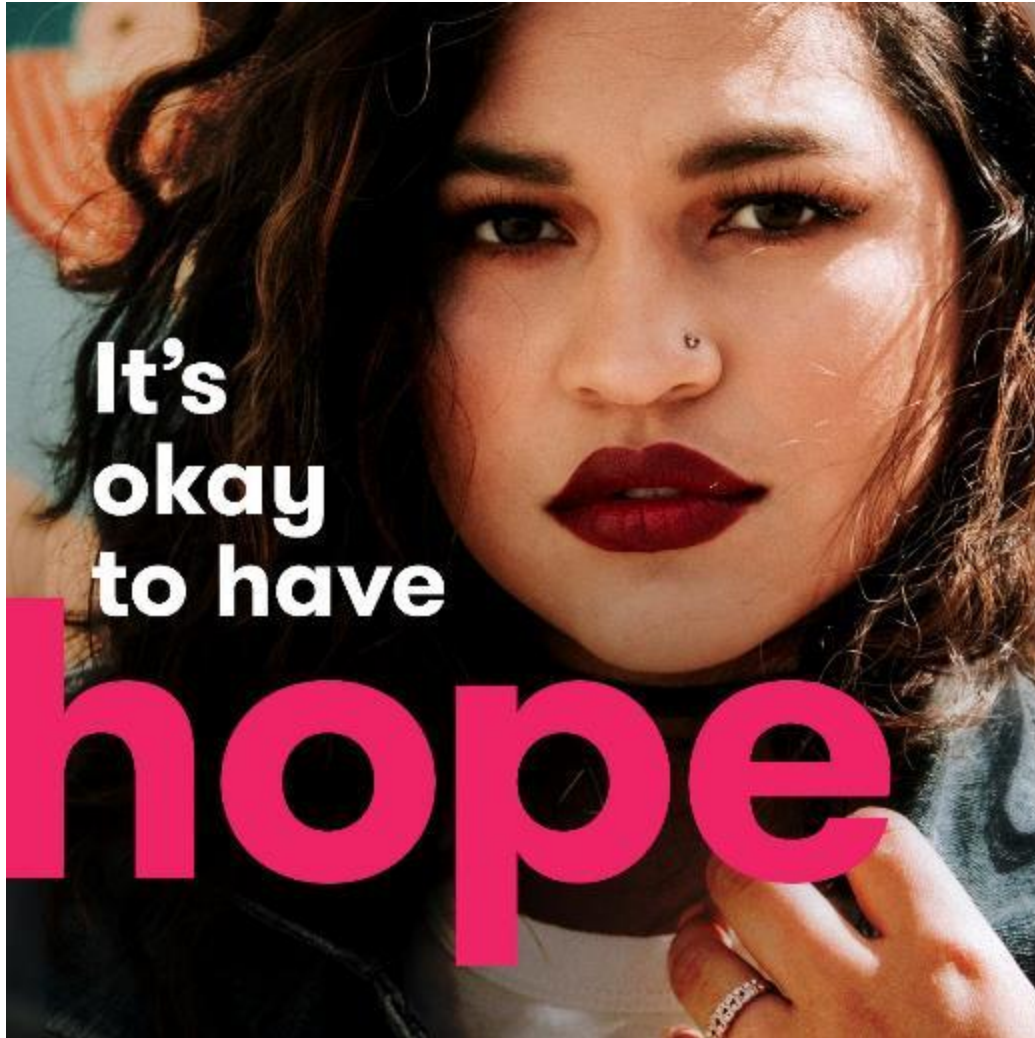
新冠疫苗採用先進科學技術，並投入空前的大量資源！此外，科學家研究如何製造這類疫苗已有數十年，早已完成大部份基礎工作，安全有效，大可放心！

全民全心齊免疫

VaccinateAll58.com
加州公共健康部門

Digital, OOH, Print Etc.

Anthem Radio



-Multicultural
airing statewide

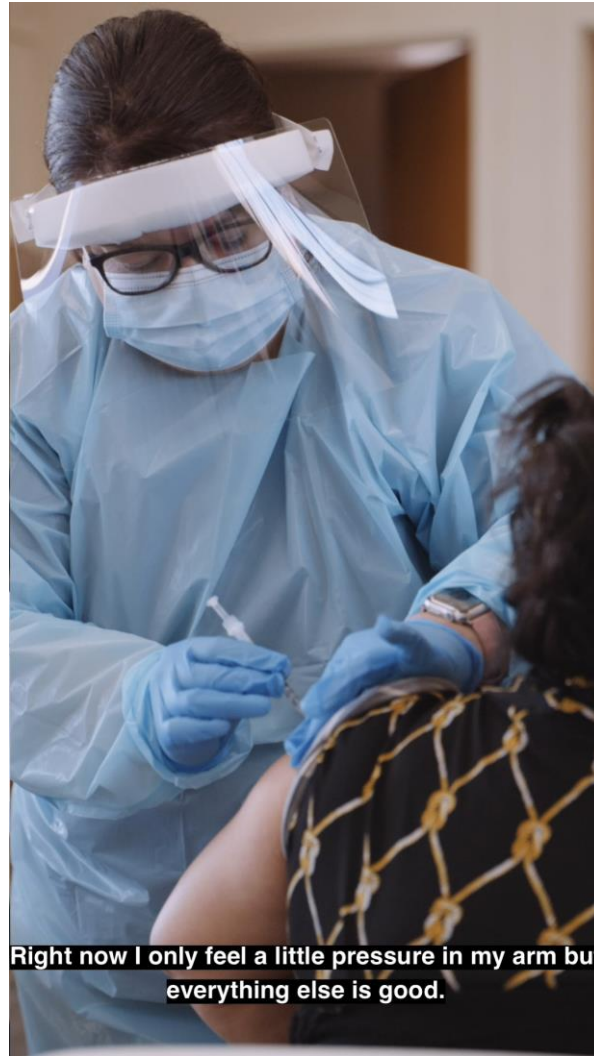
Dr. Burke Harris (J&J)



Dr. Burke Harris (J&J)



Farmworker Testimonial



Right now I only feel a little pressure in my arm but everything else is good.

Earned Media

Johnson & Johnson Vaccine Coverage

Outreach to all multiethnic primary and secondary media markets in California, including Black/African American, Asian American and Pacific Islander, and Spanish-language media outlets.



Vaccine Q & A: FOX26 News asks a local doctor your questions about COVID-19 Vaccines

Fox 26 Fresno
March 8, 2021

Dr. Trinidad Solis
Dr. Trinidad Solis, Fresno County Department of Public Health, is supporting state efforts to get the word out that all three vaccines are safe and highly effective, and Californians should get the one available to them as soon as they're eligible.



Johnson & Johnson Vaccine
Faith 4
March 4, 2021
Language: Korean



Sac State's chair of nursing: Get whatever COVID-19 vaccine is offered to you

Fox 40 Sacramento
March 5, 2021

Dr. Tanya Altmann
“The real key point that we want to point out is whatever vaccine is offered to you, is to take it and to get it,” said Dr. Tanya Altmann. “All three of them are very highly looked at and very highly vetted for their efficacy. And no matter which one you can get, you should be getting it when you can get it.”



Distribucion De Vacunas Johnson & Johnson En El Estado De California
Univision 14
March 3, 2021
Yurina Melara
Language: Spanish
Johnson & Johnson vaccine distribution in California.

Earned Media

Johnson & Johnson Vaccine Coverage: #OneAndDone Media Tour

Last week, more than 30 media outlets across California covered the vaccinations of Dr. Erica Pan, Dr. Nadine Burke Harris, Dr. Mark Ghaly, Dr. Tomas Aragon, Dr. Diana Ramos, and Dr. James Watt during press events in Oakland and Los Angeles. The doctors got the Johnson & Johnson vaccine in a coordinated effort designed to help educate the public that this newer vaccine is safe and effective at preventing severe COVID disease, hospitalization, and death.



Earned Media

On The Record with Governor Gavin Newsom: A Shot in the Arm Against COVID-19 was also placed in 43 ethnic media outlets (African American, AAPI, Native American and Latino) in Sri Lankan, Arabic, Spanish, Vietnamese, Korean, Punjabi, Tagalog and English.



Earned Media

Statewide Ethnic Media Briefings Coverage

A total of 117 confirmed outlets and organizations attended the statewide virtual ethnic media briefings for Black/African American, Asian American Pacific Islander, Latino/Hispanic and Tribal & American Indian/Alaska Native media, held on March 8 – 10, 2021. Another Tribal & American/Alaska Native briefing was held on February 22, 2021.



COVID-19 Hospitalizations Decrease as Vaccinations Increase *Los Angeles Sentinel* March 11, 2021

Secretary Yolanda Richardson
“We can see that the case rates [and] hospitalization rates are definitely decreasing as vaccines continue to increase, and we definitely want to see that continue.”



AAPI Ethnic Media Briefing *Chosun Daily* March 9, 2021

Language: Korean
Coverage of the AAPI Ethnic Media Briefing held on March 8, 2021.



Doctors urge Asians to get the new coronavirus vaccine as soon as possible *Sing Tao USA* March 10, 2021

Secretary Yolanda Richardson
Language: Chinese
State Government Operations Director Yolanda Richardson attended the Minority Media Services (EMS) Cloud Conference on Tuesday to introduce the state's progress in promoting vaccination to the Asian-Pacific community.



Indian health providers continue to combat COVID-19 a year into pandemic *Indianz.com* February 23, 2021

During a conference call Monday, representatives from the California Department of Public Health, tribal health advocates and a state epidemiologist described their efforts to curb coronavirus infection rates within tribal communities.

Vaccinate ALL 58 Newsletter

To sign up, email us:
VA58@cdph.ca.gov

VA58 Weekly Newsletter:

Sharing Information From Our Team to Yours

The Vaccinate ALL 58 Weekly Newsletter is meant to share the latest news, key messages, tools and resources around the vaccine and to help keep you up to date on what's happening at the federal, state and local level.

Ideas? Newsletter-related questions? Send us a note at VA58@cdph.ca.gov.



Vaccinate ALL 58

Together we can end the pandemic.

Weekly Updates

**Total Doses
Administered in
California: 13,037,557**

**Numbers do not represent true day-to-day change as reporting may be delayed.*

Community Outreach Update

- 49 partners through the California Community Foundation announced on February 26th
 - Total State-funded partners: 157
 - List of funded partners can be found at:
 - [California COVID-19 Community-Based Outreach Campaign: Community-Based Organizations funded by The Center at Sierra Health Foundation](#)
 - [California COVID-19 Community-Based Outreach Campaign: Community-Based Organizations funded by California Community Foundation](#)
 - https://www.shfcenter.org/assets/LWDA_Funding_Awards_020321.pdf
- On-boarding for Cohort #2 partners March 17-19
- As of mid February 180+ organizations funded through public-private partnership with Public Health Institute, and grants continue to be made on a rolling basis
- Collectively \$52.7 million in public-private partnership with the California Community Foundation, the Center at Sierra Health Foundation, the Public Health Institute and the State of California has supported 337 CBOs for COVID outreach and education statewide

Community Outreach Activities

Reported Activity	Total People Reached
Phone Banking	20,029
Door-to-Door Outreach	8,284
Text Banking	1,300
One-to-One Messaging	3,382
One-to-One Email	1,006
Email Newsletter	9,169
Booths and Tabling	7,007
Community Canvassing	18,705
Trainings (digital or in-person)	850
Events / Meetings	12,052

Reported Activity	Total Activities/Posts/Events
Booths and Tabling	154
Community Canvassing	195
Trainings (digital or in-person)	29
Events / Meetings (digital or in-person)	144
Social Media Posts	363
Mass Text / WhatsApp Message	102,443
Radio	10
Other Media Appearance	20
Mailers	36,298
Door-to-Door Outreach	5,016

Community Outreach - Vaccine

In collaboration with the State, County, and clinics:

- **Hosting** vaccine sites
- Supporting **enrollment** through My Turn or other processes
- Supporting with **wrap around services** including transportation, on-site registration, interpretation
- **Referring** individuals to vaccine sites

Share Your Insights

- What are the most effective strategies you have identified to connect individuals with the vaccine?
- What supports are most necessary to make sure someone who receives an appointment shows up for the vaccine?

Closing Comments

- Next Meetings
 - April 14, 2021 from 3:00 – 5:00/6:00pm TBD
 - May 12, 2021 from 3:00 – 5:00/6:00pm TBD
- Agenda for Next Meeting
- How to Make Public Comment:
COVID19VaccineOutreach@cdph.ca.gov
- Adjourn