



Adolescent Sexual and Reproductive Health, San Diego County, 2014



Adolescence is the developmental period from ages 10 to 19. During adolescence and into early adulthood, the brain undergoes the last major period of growth and reorganization, resulting in an increased need for stimulation and changes in social and emotional information processing. Adolescence is a time for youth to explore their identity and values. Often this occurs in the context of peer relationships though parents and other adult figures remain influential. Although the morbidity and mortality rates increase sharply from childhood through adolescence, most youth fare well. Adolescence is a critical time for establishing patterns for a positive adulthood - including an active role in one's reproductive and sexual health.

The Local and State Populations

	San Diego County		California		County Ranking ¹¹		San Diego County		California		County Ranking ¹¹
	N	%	N	%			N	%	N	%	
Total Population ¹	3,214,279	100.0	38,548,204	100.0	2	Adolescent Population ¹	399,096	100.0	5,173,253	100.0	3
Aged 10 - 14 years	194,576	6.1	2,514,558	6.5	30	Hispanic	179,856	45.1	2,603,105	50.3	22
Aged 15 - 17 years	118,491	3.7	1,545,839	4.0	29	African American	19,706	4.9	298,301	5.8	12
Aged 18 - 19 years	86,029	2.7	1,112,856	2.9	33	Asian	36,519	9.2	565,586	10.9	14
Uninsured ²	488,789	15.9	6,267,799	16.7	28	White	138,495	34.7	1,456,012	28.1	36
Public Health Insurance ²	819,220	26.6	11,580,478	30.8	52	Male	206,096	51.6	2,646,572	51.2	14
Single Head-of-Household ²	186,501	17.2	2,470,348	19.6	28	Female	193,000	48.4	2,526,681	48.8	44
Total Concentrated Poverty ²	736,765	23.7	11,663,924	31.3	34	Living in Foster Care ⁴	3,505	0.4	62,111	0.6	37
Youth Concentrated Poverty ²	189,016	26.4	3,270,753	36.1	34	Family PACT Providers ⁵	117	--	2,297	--	4
Unemployment Rate ²	--	5.9	--	7.0	39	Youth Family PACT Clients ⁵	22,090	15.0	251,926	14.0	34
Rural MSSAs ³	8	21.1	227	41.9	49	High School Dropout Rate ⁶	--	9.7	--	11.5	37

Notes: ¹Adolescent Population aged 10 - 19. State of California, Department of Finance, Report P-3: State and County Population Projections by Race/Ethnicity, Detailed Age, and Gender, 2010-2060. Sacramento, California, December 2014.

²Estimated number of population with no health insurance, public health insurance; estimated number of households with male/female householder, no wife/husband present; estimated total persons and children under age 18 in concentrated poverty; unemployment rate: 2010-2014, U.S. Census Bureau, American Community Survey (5-year estimates) retrieved from <http://factfinder2.census.gov/>. ³Total rural and frontier MSSAs: Office of Statewide Health Planning & Development, Medical Study Service Areas, retrieved from: <http://www.oshpd.ca.gov/hwdd/MSSA/>. ⁴PIT (Point in Time) estimate, July 1, 2014, youth ages 0-17; University of California at Berkeley, California Child Welfare Indicators Project (CCWIP) retrieved from: http://cssr.berkeley.edu/ucb_childwelfare/PIT.aspx. ⁵Family PACT: 2013-2014, Bixby Center for Global Reproductive Health, University of California San Francisco, Family PACT Program Report. Sacramento, CA. 2014. Retrieved from: Office of Family Planning, Department of Health Care Services. ⁶High School Cohort Drop Out Rate: 2013-2014. California Department of Education, retrieved from: <http://dq.cde.ca.gov/dataquest/>.

⁷Rate per 1,000 females, 2014. Percent of repeat births is percent of births to females aged 15 - 19 with 1-6 previous live births. Birth Statistical Master File, California Department of Public Health, Center for Health Statistics and Informatics. ⁸Rate per 100,000 youth, 2014. California Department of Public Health, STD Control Branch, rates by race, age and jurisdiction, retrieved from <http://www.cdph.ca.gov/data/statistics/Pages/STDLHJData.aspx>. ⁹Rate per 100,000 youth, 2014. California Department of Justice, Office of the Attorney General, California Arrests Data File, retrieved from: <http://oag.ca.gov/crime/cjsc/stats/arrests>. ¹⁰Percent 9th graders rated with high level of caring adult in community; with boyfriend or girlfriend who report dating violence; reported depression-related feelings in past year: 2011-2013. WestEd Health and Human Development Department for California Department of Education, retrieved from: <http://www.kidsdata.org/>. ¹¹County rankings determined by assigning rank of one to the largest value among counties and rank of 58 to smallest value.

'-' = data not available; 's' = data suppressed; * = RSE between 30% and 49%

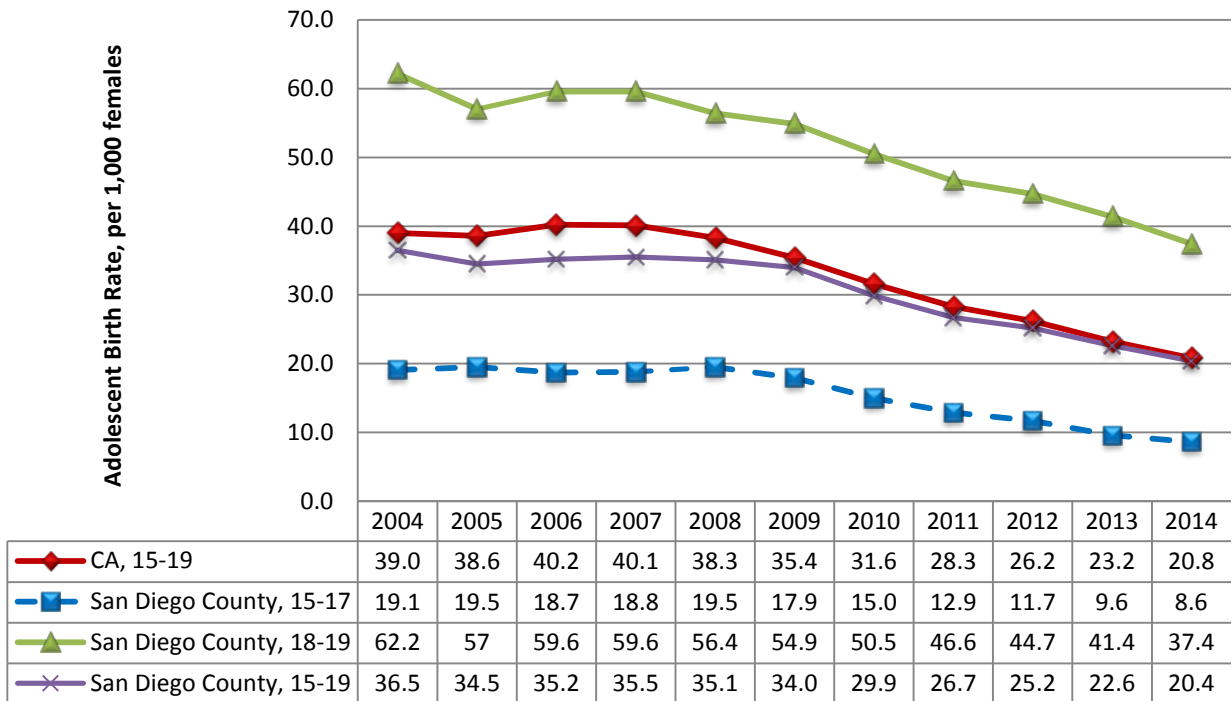
Further technical details available here: <http://www.cdph.ca.gov/data/statistics/Pages/AdolescentHealthData/CountyHealthProfiles>.



Adolescent Sexual and Reproductive Health, San Diego County, 2014

	Geography		County Ranking ¹¹	Gender		Race and Ethnicity			
	Local	State		Female	Male	Hispanic	African American	Asian	White
Adolescent Behaviors and Outcomes									
Adolescent birth rate (aged 15-19) ^{1,7}	20.4	20.8	30	--	--	30.5	20.1	3.7	7.1
Percent of repeat adolescent births (aged 15-19) ⁷	14.9	16.7	25	--	--	15.0	17.0	s	12.0
Chlamydia rate (aged 15 - 19) ⁸	1,136.3	1,295.0	25	1,978.9	359.7	1,170.7	4,648.1	623.6	683.8
Gonorrhea rate (aged 15 - 19) ⁸	149.1	210.7	20	176.7	123.6	102.3	1,074.1	46.0	99.6
Arrest rate (aged 10 - 19) ⁹	3,182.9	2,966.3	32	1,833.2	4,447.0	3,502.2	9,692.5	--	2,623.9
Have caring adult in community ¹⁰	62.6	63.6	27	63.4	62.1	--	--	--	--
Depression-related feelings ¹⁰	30.9	30.7	16	39.4	22.0	--	--	--	--
Experienced dating violence in past year ¹⁰	4.5	5.0	30	4.3	4.8	--	--	--	--

San Diego County Adolescent Birth Rate by Age Group, 2004 - 2014



Adolescent Births In San Diego County

- 2,000 adolescent births occurred in San Diego County in 2014, representing 7.4% of adolescent births in the state that year. 7.6% of CA females ages 15 – 19 lived in San Diego County in 2014.
- 75.2% of adolescent births in San Diego County in 2014 were to women aged 18 – 19. The state average was 72.9%.
- 18.9% of adolescent births in San Diego County were to foreign-born mothers. The state average was 18.9%.
- 68.0% of adolescent births in San Diego County were to mothers who reported a Hispanic ethnicity. The state average was 74.5%.
- 44.2% of adolescent births in San Diego County occurred in areas of concentrated poverty. The state average was 56.2%.