



# Adolescent Sexual and Reproductive Health, El Dorado County, 2014



Adolescence is the developmental period from ages 10 to 19. During adolescence and into early adulthood, the brain undergoes the last major period of growth and reorganization, resulting in an increased need for stimulation and changes in social and emotional information processing. Adolescence is a time for youth to explore their identity and values. Often this occurs in the context of peer relationships though parents and other adult figures remain influential. Although the morbidity and mortality rates increase sharply from childhood through adolescence, most youth fare well. Adolescence is a critical time for establishing patterns for a positive adulthood - including an active role in one's reproductive and sexual health.

## The Local and State Populations

	El Dorado County		California		County Ranking <sup>11</sup>		El Dorado County		California		County Ranking <sup>11</sup>
	N	%	N	%			N	%	N	%	
Total Population <sup>1</sup>	184,320	100.0	38,548,204	100.0	29	Adolescent Population <sup>1</sup>	24,745	100.0	5,173,253	100.0	30
Aged 10 - 14 years	11,822	6.4	2,514,558	6.5	27	Hispanic	4,490	18.1	2,603,105	50.3	47
Aged 15 - 17 years	7,584	4.1	1,545,839	4.0	19	African American	228	0.9	298,301	5.8	41
Aged 18 - 19 years	5,339	2.9	1,112,856	2.9	23	Asian	926	3.7	565,586	10.9	31
Uninsured <sup>2</sup>	17,702	9.8	6,267,799	16.7	56	White	17,672	71.4	1,456,012	28.1	10
Public Health Insurance <sup>2</sup>	54,234	30.1	11,580,478	30.8	42	Male	12,608	51.0	2,646,572	51.2	42
Single Head-of-Household <sup>2</sup>	7,844	11.7	2,470,348	19.6	54	Female	12,137	49.0	2,526,681	48.8	12
Total Concentrated Poverty <sup>2</sup>	15,615	8.7	11,663,924	31.3	46	Living in Foster Care <sup>4</sup>	318	0.7	62,111	0.6	19
Youth Concentrated Poverty <sup>2</sup>	3,326	8.5	3,270,753	36.1	48	Family PACT Providers <sup>5</sup>	14	--	2,297	--	27
Unemployment Rate <sup>2</sup>	--	6.9	--	7.0	29	Youth Family PACT Clients <sup>5</sup>	546	17.0	251,926	14.0	23
Rural MSSAs <sup>3</sup>	4	80.0	227	41.9	30	High School Dropout Rate <sup>6</sup>	--	5.9	--	11.5	50

Notes: <sup>1</sup>Adolescent Population aged 10 - 19. State of California, Department of Finance, Report P-3: State and County Population Projections by Race/Ethnicity, Detailed Age, and Gender, 2010-2060. Sacramento, California, December 2014.

<sup>2</sup>Estimated number of population with no health insurance, public health insurance; estimated number of households with male/female householder, no wife/husband present; estimated total persons and children under age 18 in concentrated poverty; unemployment rate: 2010-2014, U.S. Census Bureau, American Community Survey (5-year estimates) retrieved from <http://factfinder2.census.gov/>. <sup>3</sup>Total rural and frontier MSSAs: Office of Statewide Health Planning & Development, Medical Study Service Areas, retrieved from: <http://www.oshpd.ca.gov/hwdd/MSSA/>. <sup>4</sup>PIT (Point in Time) estimate, July 1, 2014, youth ages 0-17; University of California at Berkeley, California Child Welfare Indicators Project (CCWIP) retrieved from: [http://cssr.berkeley.edu/ucb\\_childwelfare/PIT.aspx](http://cssr.berkeley.edu/ucb_childwelfare/PIT.aspx). <sup>5</sup>Family PACT: 2013-2014, Bixby Center for Global Reproductive Health and University of California San Francisco, Family PACT Program Report. Sacramento, CA. 2014. Retrieved from: Office of Family Planning, Department of Health Care Services. <sup>6</sup>High School Cohort Drop Out Rate: 2013-2014. California Department of Education, retrieved from: <http://dq.cde.ca.gov/dataquest/>.

<sup>7</sup>Rate per 1,000 females, 2014. Percent of repeat births is percent of births to females aged 15 - 19 with 1-6 previous live births. Birth Statistical Master File, California Department of Public Health, Center for Health Statistics and Informatics. <sup>8</sup>Rate per 100,000 youth, 2014. California Department of Public Health, STD Control Branch, rates by race, age and jurisdiction, retrieved from <http://www.cdph.ca.gov/data/statistics/Pages/STDLHJData.aspx>. <sup>9</sup>Rate per 100,000 youth, 2014. California Department of Justice, Office of the Attorney General, California Arrests Data File, retrieved from: <http://oag.ca.gov/crime/cjsc/stats/arrests>. <sup>10</sup>Percent 9th graders rated with high level of caring adult in community; reported depression-related feelings in past year; with boyfriend or girlfriend who reported dating violence: 2011-2013. WestEd Health and Human Development Department for California Department of Education, retrieved from: <http://www.kidsdata.org/>. <sup>11</sup>County rankings determined by assigning rank of one to the largest value among counties and rank of 58 to smallest value.

'--' = data not available; 's' = data suppressed; \* = RSE between 30% and 49%

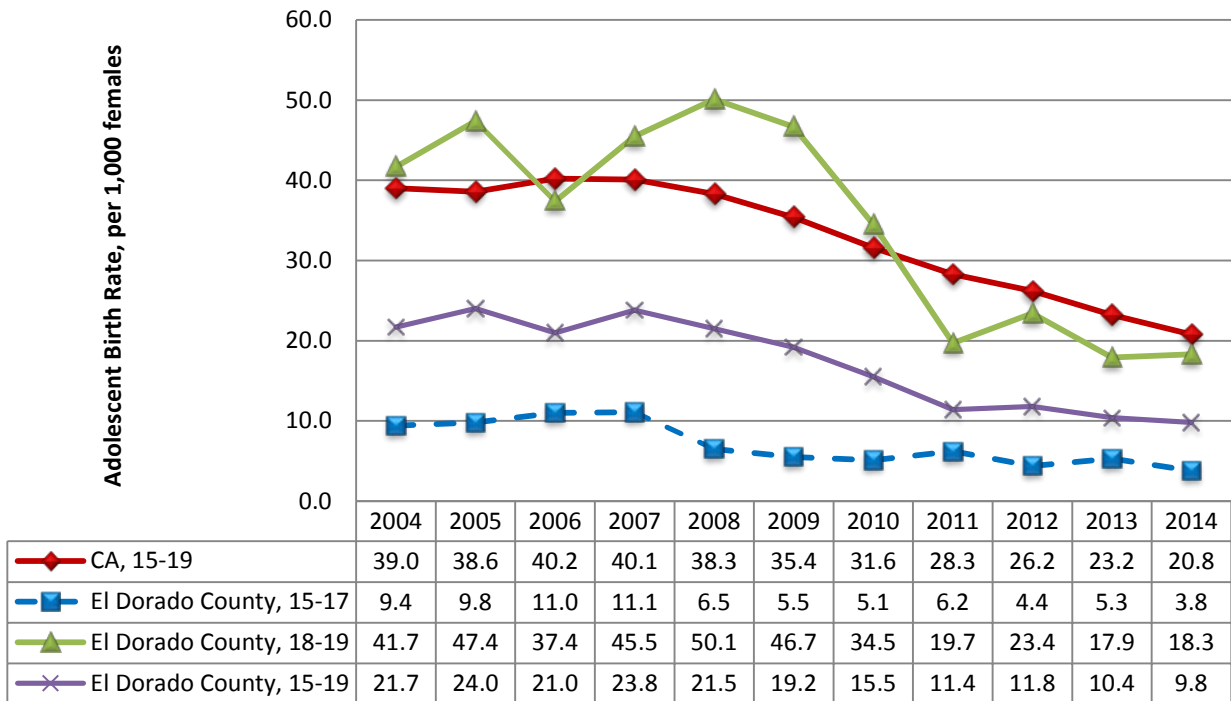
Further technical details available here: <http://www.cdph.ca.gov/data/statistics/Pages/AdolescentHealthData/CountyHealthProfiles>.



# Adolescent Sexual and Reproductive Health, El Dorado County, 2014

	Geography		County Ranking <sup>11</sup>	Gender		Race and Ethnicity			
	Local	State		Female	Male	Hispanic	African American	Asian	White
<b>Adolescent Behaviors and Outcomes</b>									
Adolescent birth rate (aged 15-19) <sup>1,7</sup>	9.8	20.8	53	--	--	17.8	0.0	s	8.5
Percent of repeat adolescent births (aged 15-19) <sup>7</sup>	8.1*	16.7	41	--	--	s	0.0	0.0	s
Chlamydia rate (aged 15 - 19) <sup>8</sup>	664.8	1,295.0	49	1,167.8	183.6	943.8	--	0.0	615.9
Gonorrhea rate (aged 15 - 19) <sup>8</sup>	39.1	210.7	48	32.0	45.9	0.0	0.0	0.0	10.8
Arrest rate (aged 10 - 19) <sup>9</sup>	2,683.4	2,966.3	42	1,491.3	3,830.9	2,917.6	11,403.5	--	2,772.7
Have caring adult in community <sup>10</sup>	72.3	63.6	5	73.2	71.7	--	--	--	--
Depression-related feelings <sup>10</sup>	29.3	30.7	24	36.0	21.7	--	--	--	--
Experienced dating violence in past year <sup>10</sup>	4.1	5.0	35	4.2	4.0	--	--	--	--

## El Dorado County Adolescent Birth Rate by Age Group, 2004 - 2014



### Adolescent Births In El Dorado County

- 62 adolescent births occurred in El Dorado County in 2014, representing 0.2% of adolescent births in the state that year. 0.5% of CA females ages 15 – 19 lived in El Dorado County in 2014.
- 8.1% of adolescent births in El Dorado County were to foreign-born mothers. The state average was 18.9%.
- 30.6% of adolescent births in El Dorado County were to mothers who reported a Hispanic ethnicity. The state average was 74.5%.
- 62.9% of adolescent births in El Dorado County were to mothers who reported a White race. The state average was 11.5%.
- 19.4% of adolescent births in El Dorado County occurred in areas of concentrated poverty. The state average was 56.2%.