

## Rule changes are here: Are you prepared? New Cal/OSHA Hazard Language

The Cal/OSHA standards\* have changed how employers must warn their employees about lead hazards. Lead work area signs and labels for lead-contaminated clothing and equipment must now include specific language about central nervous system and reproductive health effects of lead. Safety Data Sheets (SDS) must also include new language.

### What should I do?

- ▶ **Put the new warning labels** on bags or containers of lead-contaminated clothing or equipment (due by June 1, 2015).
- ▶ **Put up the new warning signs** in lead work areas (due by June 1, 2016).
- ▶ **Ask your supplier for Safety Data Sheets** that comply with the new hazard communication language.

**Remember:** If you use or disturb lead or lead-containing products in your business, you should provide blood lead level testing for your employees. Contact OLPPP for assistance.

**Warning signs** for lead work area. Available in English or Spanish, 11" x 22". Shown full size and folded to 8 ½" x 11".

**Labels** for storage of lead-contaminated materials. English or Spanish, 8 ½" x 11" and 5 ½" x 8".



### Where can I get help?

The Occupational Lead Poisoning Prevention Program (OLPPP) has developed signs and warning labels to help you comply with these new requirements. See ordering information below to get your free copies. OLPPP also provides educational and training materials, as well as technical assistance to California businesses that are trying to reduce worker exposure to lead. See Resources on the back for how to contact OLPPP.



### Easy ways to get your **FREE** signs and labels

- ▶ **Signs** - Mail/fax the order form (see below)
- ▶ **Signs** - Online ([www.surveymonkey.com/s/OrderSigns](http://www.surveymonkey.com/s/OrderSigns))
- ▶ **Signs and Labels** - Download (see links on back)

\* Cal/OSHA standards Title 8 CCR 1532.1, 5198, 5194

**YES! Please send me the FREE new lead signs!**

Complies with Cal/OSHA requirements

**SIGNS** 11" x 22" Quantity: English \_\_\_\_\_ Spanish \_\_\_\_\_

Please indicate number you wish to order. *Limit of one copy for orders from outside CA.*

Name \_\_\_\_\_ Title \_\_\_\_\_

Company \_\_\_\_\_ Type of Business \_\_\_\_\_

Address \_\_\_\_\_ City \_\_\_\_\_ State \_\_\_\_\_ Zip \_\_\_\_\_

Email \_\_\_\_\_ Phone \_\_\_\_\_ Fax \_\_\_\_\_

I'd like to receive program newsletters by email if available in the future.

**Mail or fax this form to: Occupational Lead Poisoning Prevention Program (OLPPP)**

California Department of Public Health  
850 Marina Bay Parkway, Building P-3  
Richmond, CA 94804

(510) 620-5757  
(510) 620-5743 fax  
[www.cdph.ca.gov/olppp](http://www.cdph.ca.gov/olppp)

# Resources

To find out more about what you can do to protect your employees:

- ▶ **Print, download, and see tips** for using the new lead warning signs and labels (<https://www.cdph.ca.gov/Programs/CCDCPP/DEODC/OHB/OLPPP/Pages/LeadFees.aspx>)
- ▶ Lead in the Workplace Helpline **(866) 627-1587** (toll-free in California)
- ▶ **Medical providers** that provide employee blood lead level testing (<https://www.cdph.ca.gov/Programs/CCDCPP/DEODC/OHB/OLPPP/Pages/BLLTesters.aspx>)
- ▶ **Occupational Lead Poisoning Prevention Program** ([www.cdph.ca.gov/olppp](http://www.cdph.ca.gov/olppp))



## Occupational Lead Poisoning Prevention Program

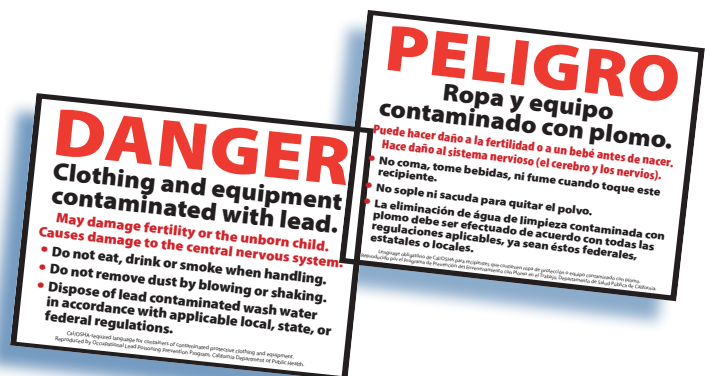
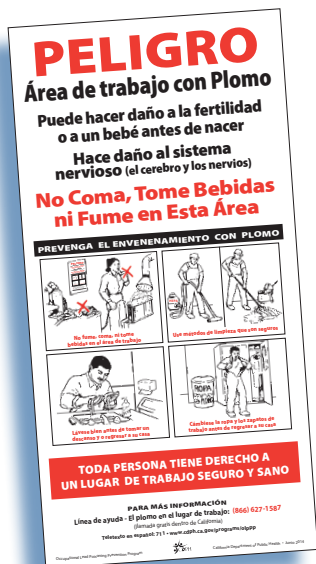
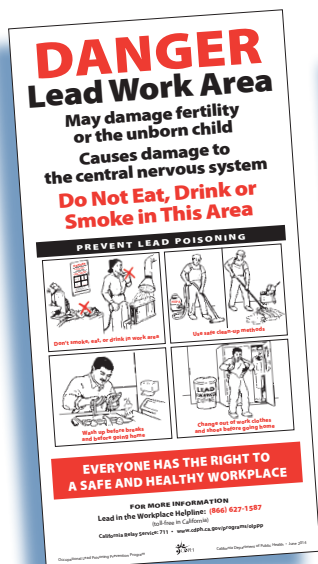
Occupational Health Branch  
 850 Marina Bay Parkway, Building P, 3rd Floor  
 Richmond, CA 94804  
 (510) 620-5757  
 (510) 620-5743 fax  
 CA Relay Service 711  
[www.cdph.ca.gov/programs/ohb](http://www.cdph.ca.gov/programs/ohb)



To obtain a copy of this pamphlet in an alternate format, please contact OHB at (510) 620-5757. Please allow at least 10 working days to coordinate alternate format services.

**Occupational Lead Poisoning Prevention Program**  
 Occupational Health Branch  
 850 Marina Bay Parkway, Building P, 3rd Floor  
 Richmond, CA 94804  
 Return Service Requested

PAID  
 US Postage  
 First Class



**FREE new lead signs and labels from OLPPP - Ordering info inside**