



Phase 1 : BHSA Population- Based Prevention Program Guide

June 30, 2025

Meeting Overview and Logistics

- **Meeting is being recorded** for public record
- **American Sign Language interpretation** available
- **Closed captioning available** – click the button with ‘CC’
- **Stay muted when not speaking** – unmute only when commenting
- **Use chat for additional comments** – all chat comments will be recorded and shared with CDPH
- **75 minutes** allocated for public comment period after CDPH’s presentation

Behavioral Health Transformation

Overview

Behavioral Health Services Act (BHSA)

The BHSA is the first major structural reform of the Mental Health Services Act since 2004. It expands and increases the types of supports available to Californians in need by focusing on gaps and priorities.

- Focuses on the most vulnerable and at-risk, including set-asides for children and youth.
- Broadens the priority population to include individuals with substance use disorder.
- Updates allocations for local services and state directed funding categories, including housing supports.
- Clearly advances community-defined evidence practices as a key strategy of reducing health disparities and increasing community representation.
- Revises county processes for planning and reporting.
- Improves transparency and accountability.

Prop1 – Behavioral Health Transformation

In March 2024, California voters passed Proposition 1, a two-bill package, to modernize the state's behavioral health care system. It includes a substantial investment in housing for people with behavioral health needs.

Behavioral Health Services Act

- Reforms funding to provide services to Californians with the most significant behavioral health needs
- Expands the behavioral health workforce to reflect and connect with California's diverse population
- Focuses on outcomes, accountability, and equity

Behavioral Health Bond

- Funds behavioral health treatment beds, supportive housing, and community sites
- Directs funding for housing to veterans with behavioral health needs

BHSA - Population-Based Prevention Program

Overview

Behavioral Health Services Act Population-Based Prevention Program Guide (Guide)

Provides information related to the Statewide Population-Based Prevention Program. This Guide is being released in two parts:

- Phase 1: Provides information about the BHSA, Population-Based Prevention Program statutory requirements, statewide goals, and state level leadership and alignment activities.
 - The development of Phase 1 is rooted in community input including 12 listening sessions and feedback regarding the priority goals and populations of focus reflected in the statewide prevention strategies.
 - Phase I is focused on **Statewide Prevention Strategies:**
 - To develop a strong understanding, based on community feedback, of "**the what**" - where should CDPH strategically invest given the limited funding.

Behavioral Health Services Act (BHSA) Population-Based Prevention Program Guide (Guide)

- Phase 2: Following a public comment process on Phase 1, Phase 2 guidance will address the operational and administrative components to execute activities to achieve intended objectives, goals, and outcomes.
 - Phase 2 will also be guided by community input and will include specific funding levels and implementation activities per strategy.

Behavioral Health Services Act (BHSA) Population-Based Prevention Program Guide (Guide)

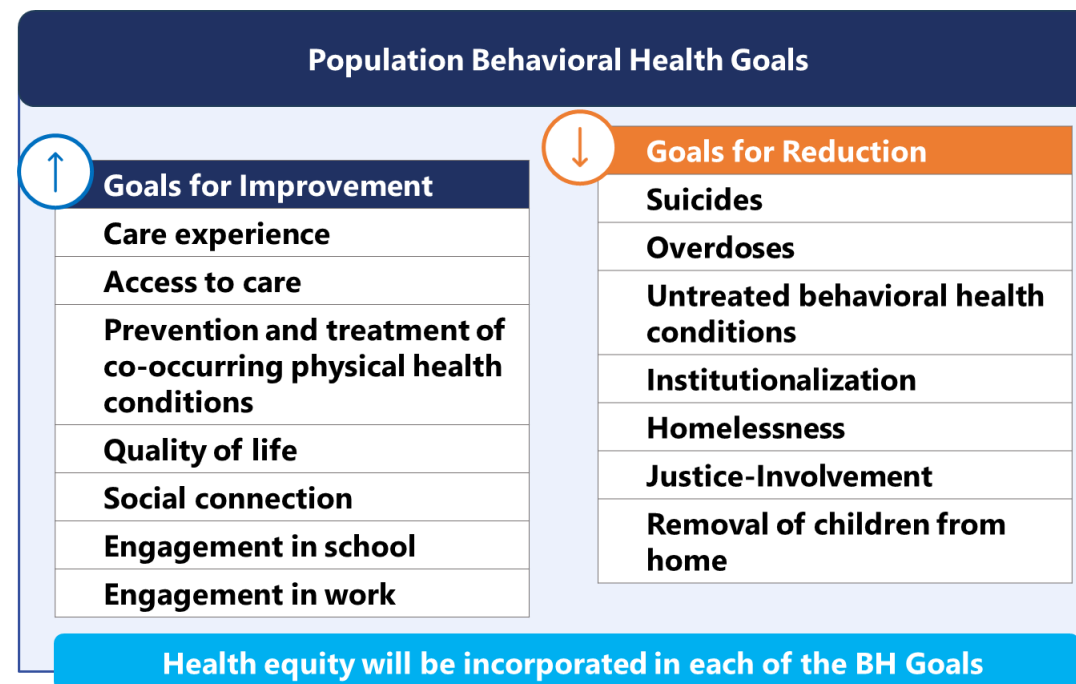
Both phases will comprise the Final Plan.

- To cover the period beginning July 2026 for a three-year period (Fiscal Years 2026-2029).
- This timeline is intended to align with the 3-year County Integrated Planning effort to facilitate cross systems collaboration and supporting strategic alignment, as needed, for coordinated and complementary approaches.

The Plan will be updated regularly to clarify and provide details on the implementation of the Statewide Population-Based Prevention Program. This Plan may also be updated based on outcomes of prevention efforts or as emerging needs and issues arise.

Section I - BHSA and Statutory Requirements

- Focuses on Statutory Requirements of BHSA
 - Alignment with 14 Statewide Population Behavioral Health Goals
 - BHSA Priority Populations
 - Alignment Across the Behavioral Health System



Section II - BHSA Population-Based Prevention Statutory Requirements

Focuses on Statutory Requirements of the BHSA Population-Based Prevention Program

- Populations of Focus:
 - Populations at elevated risk for a mental health or substance use disorder
 - Populations disproportionately impacted by systemic racism and discrimination
- Reduce stigma and discrimination
- **Prevent suicide, self-harm, and overdose**

Section III - BHSA Population-Based Prevention Program Framework

Describes statewide prevention planning efforts. Identifies population areas for initial strategic investment, including:

- Black, Indigenous, and other people of color
- Children, youth, and families
- Immigrant and refugee populations
- Justice-involved populations
- LGBTQ+ populations
- Older adults
- People experiencing economic and/or housing insecurity
- People with disabilities
- Rural populations
- Socially isolated populations
- Tribal communities
- Veterans

Section III - BHSA Population-Based Prevention Program Framework

- CDPH intends to leveraging existing capacity, assets and expertise within CDPH and other system partners to build synergy across programs and the state and maximize scalability
- Also considers key system partner roles and assets to ensure coordination and complementary functions for successful implementation.
 - [CDPH Office of Suicide Prevention](#)
 - [Substance and Addiction Prevention Branch's Overdose Prevention Initiative](#)
 - [California Reducing Disparities Project](#)
 - [DHCS Centers of Excellence](#) and the [Advance Behavioral Health Prevention California \(DHCS\)](#)

Section III - BHSA Population-Based Prevention Program Framework

The approach through statewide strategies creates alignment across the state to ensure that the population-based prevention program is focused on advancing statewide BHSA goals and meets the intended outcomes to prevent suicide and overdose.

- Statewide Policy Initiatives
- Focused Statewide Behavioral Health Prevention Strategic Plan – focused on preventing suicide, self-harm and overdose
 - For example: Strategies (in coordination with the statewide ACEs Aware Policy Initiative) to prevent adverse childhood experiences (ACEs) and promote positive childhood experiences (PCEs) by creating protective environments and strengthening supports for families
- Statewide Awareness Campaigns
 - For example: Uplift state and local resources, such as warmlines, peer supports, digital self-help resources, and crisis lines and services.

Section III - BHSA Population-Based Prevention Program Framework

The approach through statewide strategies creates alignment across the state to ensure that the population-based prevention program is focused on advancing statewide BHSA goals and meets the intended outcomes to prevent suicide and overdose.

- Prevention Training and Technical Assistance
 - For example: Promotion of community-defined evidence practices and other community-driven, culturally responsive healing practices
- Community Engagement and Coalition Building
 - For example: Develop formal advisory committee to support collective statewide planning and continuous improvement
- Data and evaluation
 - For example: Data collection and visualization on suicide, self-harm, and overdose, particularly from marginalized communities, to strengthen prevention strategies and inform local interventions and investments.

Public Comment

Guidelines for Respectful Engagement

- **Equity:** engage in an equitable and inclusive manner
- **Respect:** other people's comments and opinions and time allocated for each comment.
- **Stay focused** on the topic presented
- **Use respectful language** about people and communities
- **Welcome new ideas** and think innovatively
- **Active listening:** honor each speaker's time and perspective

Public Comment during Today's Webinar

- Verbally: Use the raise hand feature
 - **2-MINUTE TIME LIMIT** to allow as many people to speak as possible
 - You will be called on in the order in which hands were raised
- Phone participants: Press ***9** to raise hand, press ***6** to mute/unmute
- Participants may also share written feedback via [Microsoft Forms](#)

Other Ways to Provide Public Comment

- Review the Phase 1: BHSA Population-Based Prevention Program Guide on the CDPH website at: go.cdph.ca.gov/bhsa-guide
- Share your feedback in writing via [**Microsoft Forms**](#) by Friday, July 11, 2025 at 11:59 PM
- If you have additional questions, reach out to BHSAinfo@cdph.ca.gov



Next Steps

Next Steps – Timeline (Post Phase I)

- After the close of public comment, CDPH will synthesize the outputs of the engagement and feedback process into updated BHSA prevention guidance.
- Phase 2 Guide will be release for public comment later this summer.
- In Fall 2025, CDPH will release a Final Plan of the comprehensive guidance (Phase 1 and 2).

