



Marina Castillo-Augusto, MA  
Chief, Community Development and  
Engagement Unit

# OHE Community Development and Engagement Unit

## The Dream Team



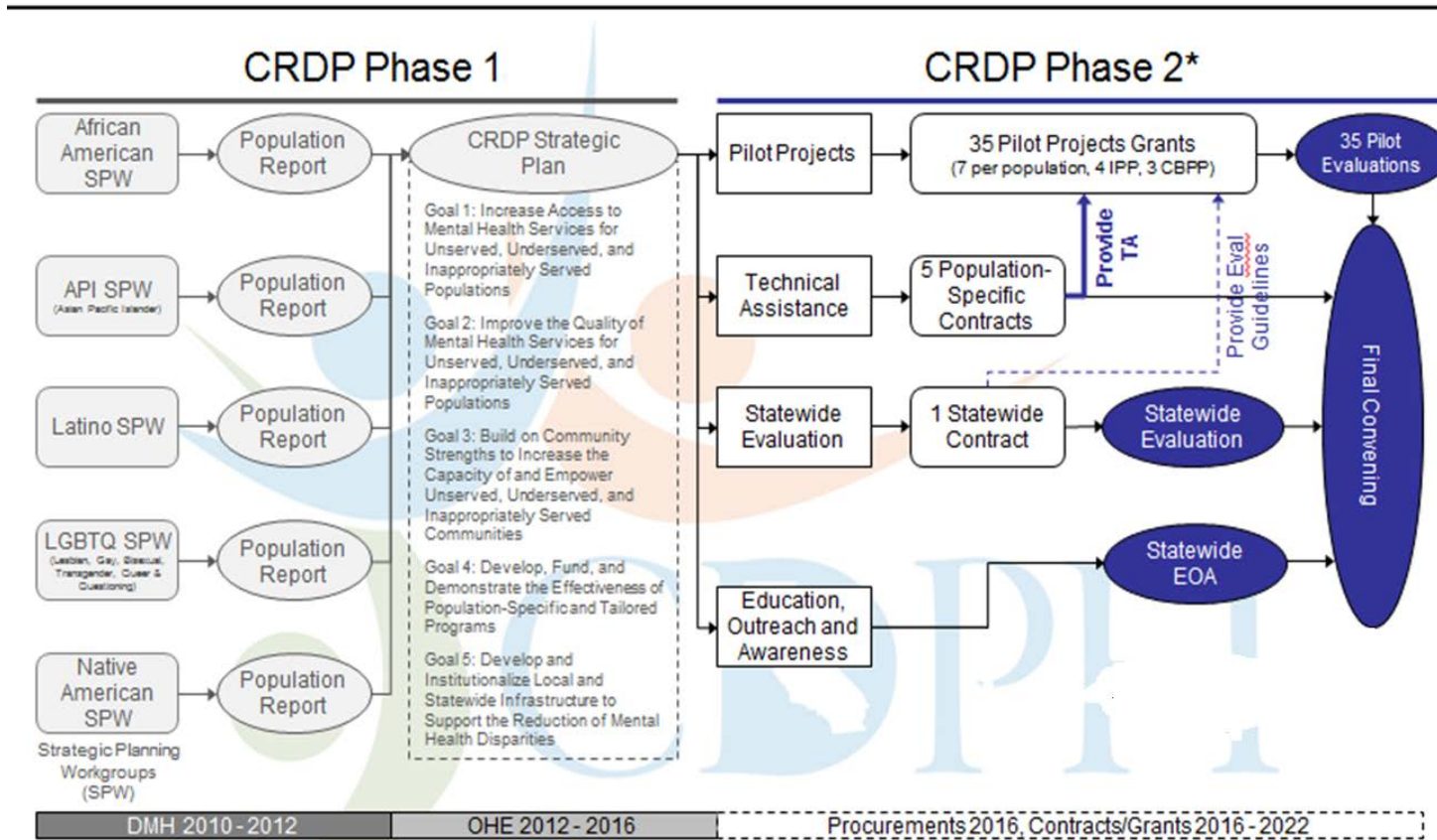


## CDEU's Highlights

- Convene with CA State University, Sacramento (CSUS) representatives from the Center for Collaborative Health Practice and Policy to embed a health equity lens
- Participation at Mental Health Matters Day at the Capitol
- Health Equity Speakers Series – Gender Lens
- Let's Get Health CA – Innovation Conference
- Tribal Engagement
- Government Alliance on Racial Equity training (Workforce Equity and Community Engagement)
- Site Visits of CRDP Contracts/Grants
- Abstract Submission for APHA
- CRDP monitoring & oversight



# The Innovative CA Reducing Disparities Project



\* In process, specific details subject to change

# CRDP Strategic Plan

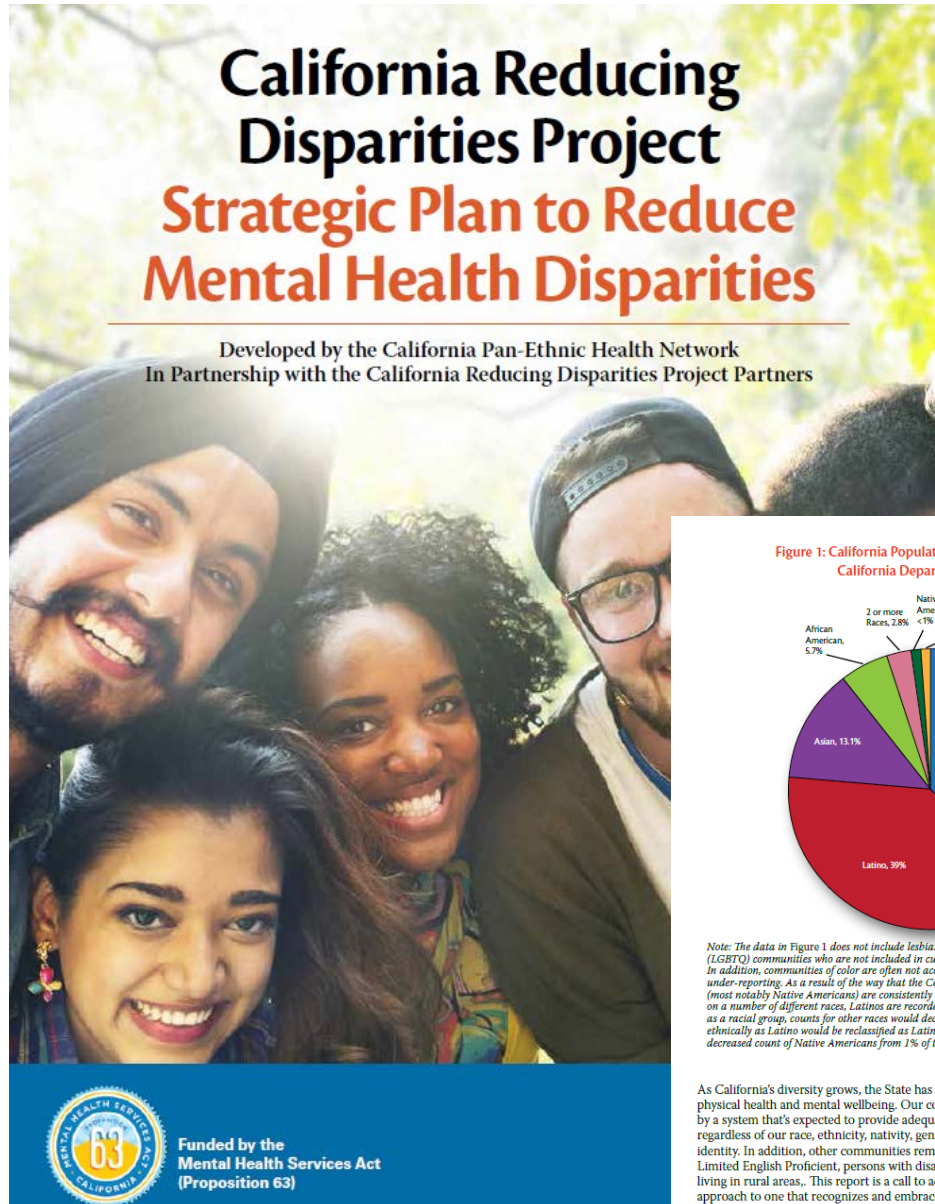
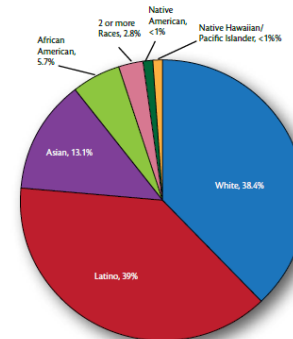


Figure 1: California Population by Race/Ethnicity, 2015  
California Department of Finance



Note: The data in Figure 1 does not include lesbian, gay, bisexual, transgender, queer, and questioning (LGBTQ) communities who are not included in current statewide or federal data collection systems. In addition, communities of color are often not accurately reported due to racial misclassification and under-reporting. As a result of the way that the Census records race and ethnicity, certain populations (most notably Native Americans) are consistently undercounted. While the Census collects data on a number of different races, Latinos are recorded as an ethnicity. If Latinos were to be included as a racial group, counts for other races would decline. For example, Native Americans identifying ethnically as Latino would be reclassified as Latino rather than Native American. This results in a decreased count of Native Americans from 1% of the population to less than half a percent.

As California's diversity grows, the State has a responsibility to address inequities in both physical health and mental wellbeing. Our communities have long been poorly served by a system that's expected to provide adequate and appropriate services to all persons, regardless of our race, ethnicity, nativity, gender, age, sexual orientation, or gender identity. In addition, other communities remain underserved, such as the homeless, Limited English Proficient, persons with disabilities, immigrants and refugees, and those living in rural areas. This report is a call to action to move us from a one-size-fits-all approach to one that recognizes and embraces our unique characteristics.

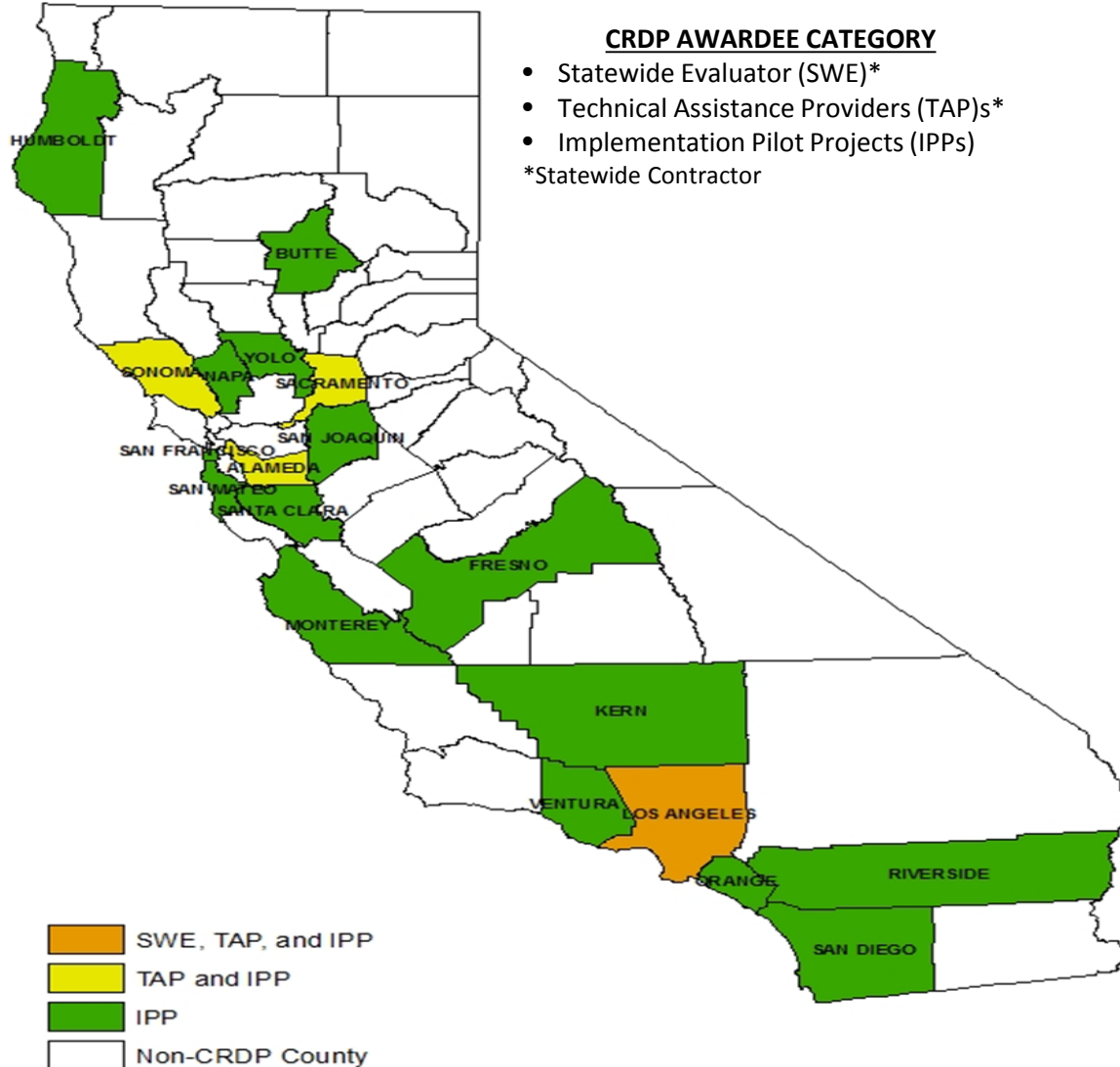
## Table of Contents

Chapter 1: Introduction and Background	4
California's Cultural Diversity	4
Accessing Mental Health Services in California	6
Mental Health Disparities in Communities of Color and LGBTQ Communities	6
The Landscape of Public Mental Health Services in California	7
The Delivery of Public Mental Health Services in California	8
Current State and Local Efforts to Reduce Disparities	8
The California Reducing Disparities Project	11
Chapter 2: Community Assets to Reduce Disparities	12
Building on Strengths to Reduce Barriers	13
Reducing Stigma	14
Addressing Discrimination and Social Exclusion	14
Removing Language Barriers	15
Expanding Health Care Coverage	15
Improving Social and Environmental Conditions	16
Increasing Quality of Care and Satisfaction	17
Enhancing Data Collection	17
Additional Approaches to Reduce Disparities in Mental Health	18
Chapter 3: Community Plan to Reduce Disparities in Mental Health	19
Purpose of the Strategic Plan	19
Community Plan to Reduce Disparities in Mental Health	20
Rate Cultural and Linguistic Competence at All Levels	22
Building at All Levels	22
Standards at all Levels	24
Environmental Determinants of Health	25
Access to Mental Health Services for Unserved, Underserved, and Inappropriately Served Populations	26
Quality of Mental Health Services for Unserved, Underserved, and Inappropriately Served	31
Community Strengths to Increase the Capacity of and Empower Unserved, Underserved, and Inappropriately Served Communities	34
Identify, Develop, and Demonstrate the Effectiveness of Population-Specific and Tailored Programs	36
Institutionalize Local and Statewide Infrastructure to Support the Reduction of Mental Health Disparities	38
Implementation Strategies	40
CRDP Phase II	42
CRDP Phase II	42
CRDP Phase II	44
CRDP Phase II	47
CRDP Phase II	47
CRDP Phase II	49
CRDP Phase II	50
CRDP Phase II	52
CRDP Phase II	53
CRDP Phase II	55
CRDP Phase II	59
CRDP Phase II	60
CRDP Phase II	61
CRDP Phase II	62
CRDP Phase II	63
CRDP Phase II	64
CRDP Phase II	65
CRDP Phase II	66
CRDP Phase II	68
CRDP Phase II	70
CRDP Phase II	71
CRDP Phase II	73



## Impact – CRDP Funded Grantees

# CRDP Foundational Components



- Statewide Evaluator
- Technical Assistance Providers
- Pilot Projects
  - Capacity Building
  - Implementation
- Education, Outreach and Awareness





- Annual Mental Health Poll
- Storytelling Technical Assistance
- Community & Key Stakeholder Engagement Plan
- Media Training
- Media Consulting Services
- Development of Collateral Material



# CRDP African American Pilot Project Showcase

- ❖ The Village Project – Emanyatta Project
- ❖ West Fresno Health Care Coalition – Sweet Potato Project



Thank You!

Marina Castillo-Augusto

916-445-8347

Marina.Augusto@cdph.ca.gov

Office of Health Equity Website

[https://www.cdph.ca.gov/Programs/OHE/Pages/Office  
HealthEquity.aspx](https://www.cdph.ca.gov/Programs/OHE/Pages/OfficeHealthEquity.aspx)