

## CALIFORNIA PLANNING GROUP (CPG) MEMBER PROFILES

CPG members that provided bios below have given consent to OA for their information to be publicly shared.

### AGRIPINA ALEJANDRES



**NO IMAGE  
AVAILABLE**

#### **NOMINATED MEMBER – THE OAKLAND TGA PLANNING COUNCIL**

**OCCUPATION:**

**EMPLOYER:**

**COUNTY:** Alameda

**PROFESSIONAL/VOLUNTEER:**

**POPULATIONS AND/OR GROUPS:**

**MEMBER BIO:**

### ANGEL VANSTARK



**NO IMAGE  
AVAILABLE**

#### **NOMINATED MEMBER – THE ORANGE COUNTY HIV PLANNING COUNCIL**

**OCCUPATION:** Prevention/PrEP Navigator

**EMPLOYER:** Radiant Health Centers

**COUNTY:** Orange

**PROFESSIONAL/VOLUNTEER:** HIV Prevention, HIV Planning/Advisory Group, Substance Abuse

**POPULATIONS AND/OR GROUPS:** Youth, MSM, GNC, POC, Latinx, Homeless/Housing Instability, Person on PrEP, and PrEP Study Participant

**MEMBER BIO:** As someone who has been on PrEP for 4 years, I have immersed myself into HIV Prevention by volunteering at the Syringe Exchange in San Francisco, as an HIV tester since 2015, and Prevention Navigator since 2017. I joined the HIV Planning Council of Orange County, first as a community member, and then as someone working in the field. I've contributed 27.9% of the PrEP Clients to meet the county wide goal.

## CAROLYN KUALI'I



### **AT-LARGE (COMMUNITY/STAKEHOLDER) MEMBER**

**OCCUPATION:** Consultant/Capacity Building Specialist

**EMPLOYER:** Semi Retired/Self-Employed

**COUNTY:** Alameda

**PROFESSIONAL/VOLUNTEER:** HIV Planning/Advisory Group

**POPULATIONS AND/OR GROUPS:** University of California, San Francisco, Center for AIDS Prevention Studies, Prevention Research Center and National Minority AIDS Council's Constituent Advisory Panels (CAPs), Advisory Board Member for the Indigenous Wellness Research Institute and the Chair for the 2020 International Indigenous AIDS Pre-Conference

**MEMBER BIO:** Carolyn Kuali'i (Hawaiian/Apache) is a life-long HIV advocate whose involvement spans three decades. Carolyn established one of the first Native Hawaiian Case Management programs in 1993, and served as a CPG member during the inception of Community Care Planning Groups in the early 90s. In 2002 she joined the capacity building team at the National Native American AIDS Prevention Center and helped to launch the first National Native HIV/AIDS Awareness Day. Carolyn served as the co-chair for the National Native HIV/AIDS Network and continues to represent American Indians, Alaska Natives, Native Hawaiians and other Pacific Islanders in her ongoing work as an HIV advocate.

## CHELSEA CARNEY



### **STATE CO-CHAIR**

**OCCUPATION:** Associate Health Program Adviser

**EMPLOYER:** California Department of Public Health, Office of AIDS

**COUNTY:** Sacramento

**PROFESSIONAL/VOLUNTEER:** HIV Planning/Advisory Group, HIV Prevention

**POPULATIONS AND/OR GROUPS:**

**MEMBER BIO:** NO MEMBER BIO AVAILABLE AT THIS TIME

## CLARMUNDO SULLIVAN



### ***AT-LARGE (COMMUNITY/STAKEHOLDER) MEMBER***

**OCCUPATION:** Executive Director

**EMPLOYER:** Golden Rule Services

**COUNTY:** Sacramento

**PROFESSIONAL/VOLUNTEER:** HIV Prevention

**POPULATIONS AND/OR GROUPS:** Transgender, MSM, MSM IDU, HIV positive partner, Sex Industry Workers, STD Stakeholders Group, African American MSM, Latin American MSM

**MEMBER BIO:** I have had the honor of being involved with HIV prevention for 30 years. My experience includes HIV prevention, navigation services, advocacy, prevention research, social marketing, curriculum development and technical assistance provision. In 2000, I founded Golden Rule Services, an award-winning minority based nonprofit that provides a variety of HIV, STI and HCV prevention services. I have earned a Bachelors in Social Work and a Masters in Education.

## COLETTE SCHABRAM



### ***NOMINATED MEMBER – HIV PREVENTION AND CARE COUNCIL, SANTA BARBARA COUNTY***

**OCCUPATION:** Executive Director

**EMPLOYER:** Pacific Pride Foundation

**COUNTY:** Santa Barbara

**PROFESSIONAL/VOLUNTEER:**

**POPULATIONS AND/OR GROUPS:**

**MEMBER BIO:** As a Santa Barbara native, Colette has always had a passion to serve her home community. She has worked in the non-profit development arena for over a dozen years and has raised millions of dollars for LGBTQ+ rights and social justice causes in that time.

Currently, Colette is the Executive Director of Pacific Pride Foundation where she has also served as the Director of Community Engagement, Development and Events Manager, and the Development Associate. She has volunteered and served on a number of fundraising, event, and social justice committees. Colette is currently a member of the Santa Barbara County HIV Planning Group, a board member for the Continuum of Care Homeless Solutions Board in Santa Barbara County, is an elected member of the California Planning Group under the State Office of AIDS and is an alum of Leadership Santa Barbara County. Her skill-set includes development, event planning and execution, volunteer and board management, advocacy, and leadership. A graduate of Fielding University's Organizational Management & Development MA, Colette brings a toolkit of ideas, a spirit of cooperation to all of her endeavors.

## CURTIS SMITH



**NOMINATED MEMBER – INLAND EMPIRE HIV PLANNING COUNCIL**

**OCCUPATION:** CEO

**EMPLOYER:** Families Living with AIDS Care Center

**COUNTY:** Riverside

**PROFESSIONAL/VOLUNTEER:** HIV Prevention, HIV Planning/Advisory Group

**POPULATIONS AND/OR GROUPS:** Homeless youth and adults, drug users, and sex workers

**MEMBER BIO:** I am an African American, Bisexual male that was diagnosed in 1987 with HIV and got married. My wife and children were infected. My wife is now deceased along with my 4 year old daughter. I have a 22 year old daughter born with HIV, my oldest daughter who acquired it, and a granddaughter that is not infected. To empower my family, my wife and I started the Families Living with AIDS Care Center in 2004 and established it as a 501c3 in 2009.

## EBONY HARPER



**AT-LARGE (COMMUNITY/STAKEHOLDER) MEMBER**

**OCCUPATION:** Program Associate

**EMPLOYER:** The California Endowment

**COUNTY:** Sacramento

**PROFESSIONAL/VOLUNTEER:** HIV Prevention, HIV Planning/Advisory Group, Mental Health, Housing

**POPULATIONS AND/OR GROUPS:** Transgender women of color

**MEMBER BIO:** As one of the only persons working in philanthropy on The California Planning Group it is my mission to build capacity and develop strategies to reduce the transmission of HIV amongst trans women of color, specifically black trans. I'm one of two black trans women working in philanthropy in the nation so I consider it my duty to support programs and that provide comprehensive preventive care to community that's often forgotten. My goal as a CPG member is to fund programs that's working to get my community virally suppressed and preventive medicine like pre and post exposure prophylactic.

## **EDWIN COCKRELL**



**AT-LARGE (COMMUNITY/STAKEHOLDER) MEMBER**

**COMMUNITY CO-CHAIR**

**OCCUPATION:** Configuration Analyst

**EMPLOYER:** Medhok Inc.

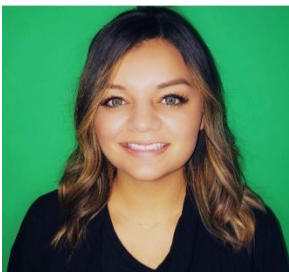
**COUNTY:** Los Angeles

**PROFESSIONAL/VOLUNTEER:**

**POPULATIONS AND/OR GROUPS:**

**MEMBER BIO:** I have been living with HIV since September 20th, 2011. I was diagnosed while living in St. Louis, Missouri. I moved to Los Angeles California in summer of 2012 to have a change in pace and receive better services for my HIV. Shortly after moving to Los Angeles, I became homeless and lived in the temporary living program at Los Angeles LGBT Center. While living there I became an HIV test counselor while volunteering at Common Ground in Santa Monica. In my free time I enjoy traveling, playing numerous sports, trying new food and volunteering.

## **EVELYN ALVAREZ**



**NOMINATED MEMBER – MONTEREY COUNTY HIV PLANNING GROUP**

**OCCUPATION:** Chronic Disease Prevention Coordinator

**EMPLOYER:** Monterey County Health

**COUNTY:** Monterey

*CPG Member Profiles*

*January 2019*

*Page 5 of 16*

**PROFESSIONAL/VOLUNTEER:** Ryan White Part B Grantee, Ryan White Minority AIDS Initiative, HIV Prevention, HIV Planning/Advisory Group

**POPULATIONS AND/OR GROUPS:** Young LatinX folks ages 18-24 yrs.

**MEMBER BIO:** I am interested in continuing to be involved in prevention outreach among our young individuals in LatinX populations. Empowering people to continue improving their sexual health in order to live a long healthy life.

## HOLVIS DELGADILLO



NO IMAGE  
AVAILABLE

### **AT-LARGE (COMMUNITY/STAKEHOLDER) MEMBER**

**OCCUPATION:** Discharge Planning Coordinator

**EMPLOYER:** California Forensic Medical Group (CFMG)

**COUNTY:** Contra Costa

**PROFESSIONAL/VOLUNTEER:** HIV Prevention, Substance Abuse, HIV Positive Incarcerated

**POPULATIONS AND/OR GROUPS:** Formerly and currently incarcerated HIV positive clients

**MEMBER BIO:** I am a strong believer that “a drop of prevention can prevent an ocean of disaster.” To continue preventing the spread of HIV in California will help avoid that “ocean of disaster.” My experience includes: test counselor, outreach worker, case manager, former/prospective member of the Oakland TGA, and working with currently and formerly incarcerated HIV positive clients. I enjoy hiking, wine tasting parties with friends, entertaining at home for family and friends and the opera.

## JB DEL ROSARIO



NO IMAGE  
AVAILABLE

### **AT-LARGE (COMMUNITY/STAKEHOLDER) MEMBER**

**OCCUPATION:** Research Associate

**EMPLOYER:** San Francisco Department of Public Health

**COUNTY:** San Francisco

**PROFESSIONAL/VOLUNTEER:** HIV Prevention, HIV Planning/Advisory Group, Substance Use, Mental Health

**POPULATIONS AND/OR GROUPS:** Youth, Filipinx community, LGBTQ community, immigrant community, low socioeconomic class

**MEMBER BIO:** My interest and passion in HIV/AIDS stems from my desire to give back to my communities and communities that have supported me. I hope to continue to dedicate my work and energy to reducing health disparities and improve health outcomes not only in HIV/AIDS but also other health issues that burden black/brown queer communities.

## JENA ADAMS



NO IMAGE  
AVAILABLE

### ***NOMINATED MEMBER - FRESNO COUNTY COMMUNITY ACTION COUNCIL***

**OCCUPATION:** HIV Prevention Coordinator

**EMPLOYER:** Fresno County Department of Public Health

**COUNTY:** Fresno

**PROFESSIONAL/VOLUNTEER:** HIV Prevention, HIV Planning/Advisory Group

**POPULATIONS AND/OR GROUPS:** Women, People of Color (specifically African Americans), MSM, Substance Users

**MEMBER BIO:** For the past 22 years, I have worked within the Community Health Division of the Fresno County Department of Public Health. I currently supervise Fresno County's HIV programs which includes: ADAP, Surveillance, HIV and Hepatitis C testing, Linkage to Care, and Partner notification; and STD prevention including Syphilis Investigation. In addition, I am the Government Co-Chair of the local HIV Planning Group; and from 2013-2017 served as the Community Co-Chair of the CDPH-Office of AIDS Community Planning Group.

## JOSEPH BURKE



NO IMAGE  
AVAILABLE

### ***NOMINATED MEMBER - SAN DIEGO HIV HEALTH SERVICES PLANNING COUNCIL***

**OCCUPATION:** Bi-National HIV Prevention Program, Director and Educator, and Consultant

**EMPLOYER:** South Bay Alliance, La Union, Various Universities and Community Colleges

**COUNTY:** San Diego

**PROFESSIONAL/VOLUNTEER:** Ryan White Part A Planning Council, HIV Prevention

Substance Abuse, Mental Health, Housing Opportunities for Persons with AIDS (HOPWA),

**Other:** HIV/AIDS Services and linkage to care for deportees to Mexico & Migrants in Mexico

**POPULATIONS AND/OR GROUPS:** I represent the Bi-National Community of the USA/Mexico Border. I am a gay man over 50 living with HIV. My perspective on HIV Planning dates back to before GRID Planning, Gay Community Activism to challenge indifference of the time, and ability to separate effective and ineffective strategies of education, prevention, testing, counseling, care and treatment, and negotiating action through consensus building. I have served and continue to serve on HIV/AIDS/STI community organization boards including The San Diego County HIV Planning Council, San Diego County HIV Prevention Group, The Border Health Consortium of the Californias. South Bay LGBTQIA Alliance of San Diego and Tijuana.

**MEMBER BIO:** I am proud to say that I worked in the Mayor Thomas Bradley Administration in Los Angeles from 1979 to 1986, and through the efforts and fundraising ability of the Los Angeles Street Scene was able to instigate directing funds and support in the founding of AIDS Project Los Angeles. I had the opportunity and honor to work with those that have shaped HIV/AIDS strategies in Southern California like Chuck Henry, Terry Cunningham and the development of novel programs recognized internationally as best practices for other jurisdictions to follow and or adapt. My continued work in the STI field is with the Bi-National Community of San Diego and Imperial Counties and the State of Baja California North, Mexico, with Bi-National engagement with HIV/AIDS Agencies, Providers, and Non-Governmental Organizations that work with the Border HIV Community with the mission education, testing, and linkage to care for fifty (50k) kilometers on both sides of the international boundary.

## KARL VIDT



**NOMINATED MEMBER - SANTA CLARA COUNTY HIV COMMISSION (PLANNING BODY)**

**OCCUPATION:** Medically Retired Architect/Disability

**EMPLOYER:**

**COUNTY:** Santa Clara

**PROFESSIONAL/VOLUNTEER:** Ryan White Part A Planning Body, HIV Planning/Advisory Group

**POPULATIONS AND/OR GROUPS:** MSM, PLWH/A, Long Term Survivors, Aging PLWH/A, People with Disabilities

**MEMBER BIO:** I am a person who has lived with HIV/AIDS for over 30 years. In the midst of this journey I lost my vision to an opportunistic infection (OI). I became involved on the San Jose Planning Council in 2002 and have become a very public advocate in my local community. Activities have included public speaking, panels, news interviews and representing PWH/A on the Disability Advisory Commission for the City of San Jose, CA. I feel I bring a unique perspective as a Person Living with a Disability (PWD) who are often overlooked or ignored in HIV Prevention and Care Services as well as in the wider community. My aim is to make a loving, compassionate difference in all I say and do.

## KEN PEARCE





**NOMINATED MEMBER – SAN FRANCISCO EMA HIV COMMUNITY PLANNING COUNCIL**

**OCCUPATION:** Retired Psyc Hosp CEO

**EMPLOYER:**

**COUNTY:** San Francisco

**PROFESSIONAL/VOLUNTEER:** Ryan White Part A Planning Council, HIV Planning/Advisory Group, Medicare, Mental Health

**POPULATIONS AND/OR GROUPS:** Seniors with disabilities, over 65 and Medicare eligible, ADAP coordination with Medicare, mental health, and home and caregiver services for HIV disabled

**MEMBER BIO:** Long term survivor diagnosed AIDS 1995, tested positive with first HIV test 1985. MPH in Health Administration and Planning. CEO of psyc hospitals before disabled. Member of IRB at Area Hospital in '90 for HIV research. Board member of numerous HIV and prevention agencies (i.e. mental health, housing, etc.). HIV phone hotline nation-wide (volunteer). Certified HIV Testing Counselor. Volunteer Counselor for Community HIV Prevention Testing. Senior Health Insurance Counselor, Medicare Certified Ship Federal Program. Volunteer "law clerk" with HIV Legal Services. Ongoing 1 on 1 Health Advocate Rep who interfaces with health care systems for individuals with Parkinson's, dementia, strokes, HIV complications, cardiac conditional. SF Prevention Council (10 years). Oldest member and longest running appointment to SF EMA Planning Body (20 years).

**LIZ HALL**



**NO IMAGE AVAILABLE**

**STATE CO-CHAIR**

**OCCUPATION:** Care Housing Unit Chief

**EMPLOYER:** California Department of Public Health, Office of AIDS

**COUNTY:** Sacramento

**PROFESSIONAL/VOLUNTEER:** Ryan White Part B Grantee, Ryan White Minority AIDS Initiative (MAI)

**POPULATIONS AND/OR GROUPS:**

**MEMBER BIO:** I have worked for the Office of AIDS since May 2013 as a Health Program Specialist (HPS) for the Ryan White (RW) Part B, HIV Care Program (HCP). As a HPS, I participate in program planning, reporting and technical assistance for HCP and MAI and serve as the State RW Part B Representative for two RW Part A

Planning Councils. My past experience has included working on programs that addressed the social determinants of health as well as reducing health disparities. I am honored to serve on the CPG with such a remarkable group of people as we work together to reach the goals of the National HIV/AIDS Strategy.

## MICHAEL WEISS



NO IMAGE  
AVAILABLE

### ***AT-LARGE (COMMUNITY/STAKEHOLDER) MEMBER***

**OCCUPATION:** Program Services Coordinator

**EMPLOYER:** Humboldt County DHHS

**COUNTY:** Humboldt

**PROFESSIONAL/VOLUNTEER:** Ryan White Part B Grantee, HIV Prevention, Substance Abuse, Housing Opportunities for Persons with AIDS (HOPWA)

**POPULATIONS AND/OR GROUPS:** HIV Positive, Gay MSM, Rural LGBTQ, sero-discordant relationships, HIV service providers

**MEMBER BIO:** I am a long term survivor living with HIV for 20 years. I identify as a queer man. My interests include addressing stigma related to HIV, access to PrEP, and LGBTQ issues through the lens of a rural perspective. I have been working in the HIV prevention field since 2000 both in urban and rural communities. In Humboldt I implemented the first PrEP Navigation program and worked with community partners to establish and support a local LGBTQ Pride Organization and Transgender medical clinic.

## MIGUEL MARTINEZ



NO IMAGE  
AVAILABLE

### ***NOMINATED MEMBER – LOS ANGELES COUNTY COMMISSION ON HIV***

**OCCUPATION:** Project Manager

**EMPLOYER:** Children's Hospital Los Angeles

**COUNTY:** Los Angeles

**PROFESSIONAL/VOLUNTEER:** Ryan White Part A Planning Council, HIV Prevention, HIV Planning/Advisory Group

**POPULATIONS AND/OR GROUPS:**

**MEMBER BIO:** I have been involved in HIV prevention and care services for over 20 years and currently manage HIV Services and the Center for Transyouth and Development at Children's Hospital Los Angeles. I

have experience in program planning around HIV prevention, care and treatment; including expertise in adapting and implementing evidence-based interventions (AIM, POL, MPowerment, Seeking Safety). In my role at CHLA I have also had the opportunity to be involved in the design and implementation of research focused on sexual health and young gay and bisexual men of color and transgender youth of color.

## **NATALIE SANCHEZ**



***AT-LARGE (COMMUNITY/STAKEHOLDER) MEMBER***

**OCCUPATION:** Administrator

**EMPLOYER:** UCLA Department of Pediatrics

**COUNTY:** Los Angeles

**PROFESSIONAL/VOLUNTEER:** Ryan White Part A Grantee, Ryan White Part D Grantee

**POPULATIONS AND/OR GROUPS:** Latinos living with or affected by HIV specifically: Women, Infants (exposed and infected), children, and youth. Families affected by HIV. MSM of color.

**MEMBER BIO:** Natalie is a two time BRUIN with a MPH degree and a BA in Sociology. She has been working in the field of HIV for 15 years. Natalie is the creator, writer and executive producer of the telenovela webseries, *Sin Verguenza*, an educational tool that is used nationally to address HIV stigma and shame in Latino communities. She has experience implementing and evaluating HRSA Ryan White and CDC programs. She is the Director of the Family AIDS Network at UCLA where she manages a network of agencies coordinating services for HIV positive Women, Infant, Children and Youth. Natalie has created and led some of the largest and most successful multicultural HIV campaigns as well as implemented a combination of public health strategies to reduce HIV infections.

## **PATRICK GRIJALVA**



***AT-LARGE (COMMUNITY/STAKEHOLDER) MEMBER***

**OCCUPATION:** HIV Program Specialist

**EMPLOYER:** Kern County Public Health Services Department

**COUNTY:** Kern

**PROFESSIONAL/VOLUNTEER:** Ryan White Part B Grantee, Ryan White Minority AIDS Initiative (MAI), House Opportunities for Persons with AIDS (HOPWA), HIV Prevention, HIV Planning/Advisory Group, PrEP Navigator Services Grantee

**POPULATIONS AND/OR GROUPS:** LGBT and other MSM, HIV positive community, high risk HIV negative individuals, HIV providers and any other communities needing a voice

**MEMBER BIO:** Patrick has 12 years of experience working in public health with the Kern County Public Health Services Department. He has three years of experience working in HIV and AIDS. Patrick started out conducting HIV testing and linkage to care activities. He enjoyed helping people with their needs and providing the necessary resources to help them stay in or get back into care. In Patrick's short time working in HIV, he was able to advance in his position as a Program Manager by administering and supervising the county's HIV programming including but not limited to HIV Prevention, Ryan White, HIV Surveillance, and PrEP/PEP. He was able to help start the county's first known PrEP Program in a health department clinic setting. Patrick currently facilitates the county's local HIV Community Partnership group where he brings together all community stakeholders to help drive HIV/AIDS activities and services in Kern County."

## RAFAEL GONZALEZ



**AT-LARGE (COMMUNITY/STAKEHOLDER) MEMBER**

**OCCUPATION:** Student

**EMPLOYER:**

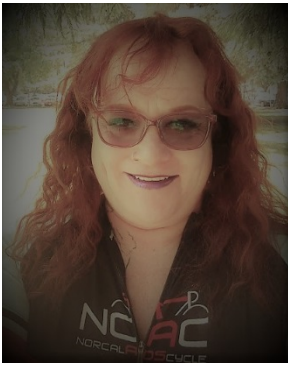
**COUNTY:** Riverside/San Bernardino

**PROFESSIONAL/VOLUNTEER:** Ryan White Part A Planning Council, HIV Prevention, HIV Planning/Advisory Group

**POPULATIONS AND/OR GROUPS:** HIV Positive, LGBTQ, Student

**MEMBER BIO:** Rafael has been involved in HIV prevention for over 14 years. He has held positions in community health education at local AIDS service organizations and spent the last 5 years managing Early Intervention/Linkage to Care, HIV Testing/Education and PrEP Education/Navigation programs in Riverside County. He is currently a business student and continues to serve his community as a member of the Inland Empire HIV Planning Council that serves Riverside and San Bernardino Counties.

## ROBYN LEARNED



**AT-LARGE (COMMUNITY/STAKEHOLDER) MEMBER**  
**COMMUNITY CO-CHAIR**

**OCCUPATION:** Harm Reduction Program Manager

**EMPLOYER:** Gender Health Center

**COUNTY:** Sacramento

**PROFESSIONAL/VOLUNTEER:** HIV Prevention, Substance Abuse, Mental Health

**POPULATIONS AND/OR GROUPS:** Transgender community and PWID community

**MEMBER BIO:** I have been an HIV test counselor for over five years; and I have also completed trainings to work with sex worker populations. Being an out and proud transgender activist, I feel that I have learned how to bring a very different perspective to the conversations around HIV prevention and testing. I am also honored to be involved in the TRIUMPH\* pilot project that is being conducted by folks like Bob Grant and Jae Sevelius from UCSF.

\*Trans Research-Informed communities United in Mobilization for the Prevention of HIV  
<http://transhealth.ucsf.edu/trans?page=programs-triumph>

## SHAUN PETERSON



**NO IMAGE  
AVAILABLE**

**AT-LARGE (COMMUNITY/STAKEHOLDER) MEMBER**

**OCCUPATION:** HIV Tester/Counselor, PrEP Navigator

**EMPLOYER:** County of Humboldt DHHS-PH North Coast AIDS Project (NorCAP)

**COUNTY:** Humboldt

**PROFESSIONAL/VOLUNTEER:** Ryan White Part B Grantee, HIV Prevention, PrEP Navigator/Consumer

**POPULATIONS AND/OR GROUPS:** Young MSM, PrEP Consumers, and PrEP Navigators

**MEMBER BIO:** I am intensely interested in all aspects of HIV prevention in both my professional and personal life. I have lost family and friends due to complications with AIDS and seek to educate people through my work and raise money for treatment, prevention, and research in my free time. I am most proud of my success in helping young individuals, mostly MSM, in a rural/frontier community access Pre-Exposure Prophylaxis as a

means to prevent HIV infection. I make it a personal point to combat HIV related stigma in order to help our community heal from generations of fear, ignorance and intolerance.

## **SHELIA CROMWELL-NIEVE**



### ***AT-LARGE (COMMUNITY/STAKEHOLDER) MEMBER***

**OCCUPATION:** Sales Representative

**EMPLOYER:** Care Meds Pharmacy

**COUNTY:** San Bernardino

**PROFESSIONAL/VOLUNTEER:**

**POPULATIONS AND/OR GROUPS:**

**MEMBER BIO:** I'm a Southern black female, mother and a member of the LGBTQ community. I have been the sole black female representing the Riverside/San Bernardino TGA on the Inland Empire HIV Planning Council since October 2013. I am the former Community Co-Chair for the IEHPC 2014-2016. I have been a part of CPG since October 2014. I am the Sales Representative for CareMeds Pharmacy of Irvine, CA for the San Bernardino Area since April 2015.

## **STEVEN CAMPA**



**NO IMAGE  
AVAILABLE**

### ***AT-LARGE (COMMUNITY/STAKEHOLDER) MEMBER***

**OCCUPATION:** Outreach Coordinator

**EMPLOYER:** Los Angeles LGBT Center

**COUNTY:** Los Angeles

**PROFESSIONAL/VOLUNTEER:** HIV Prevention

**POPULATIONS AND/OR GROUPS:** Gay/Bisexual/YMSM of color ages 18-29, HIV positive individuals

**MEMBER BIO:** I have been in the field of HIV prevention for 5 years. I run social/support groups for YMSM as well as am a certified HIV tester.

## SUSAN FARRINGTON



NO IMAGE  
AVAILABLE

### ***NOMINATED MEMBER – SACRAMENTO HIV HEALTH SERVICES PLANNING COUNCIL***

**OCCUPATION:** Executive Director

**EMPLOYER:** Sierra Foothills AIDS Foundation

**COUNTY:** Sacramento

**PROFESSIONAL/VOLUNTEER:** Ryan White Part A Planning Council, Ryan White Part A Grantee, Ryan White Part B Grantee, Ryan White Part D Grantee, HIV Prevention, Medi-Cal, Substance Abuse, Mental Health, Veteran's Administration, Housing Opportunities for Persons with AIDS (HOPWA)

**POPULATIONS AND/OR GROUPS:** Sacramento Transitional Grant Area, People living with HIV/AIDS in rural areas in Northern California and the Sierra Region, homeless and at risk of homelessness, incarcerated and recently released from incarceration, perinatal HIV infected individuals.

**MEMBER BIO:** I have more than 30 years of experience working in both HIV care and prevention programs. I parented, as a legal guardian, a HIV infected child successfully to adulthood. I am presently chair of the Sacramento TGA HIV Planning Council, chair of the Sacramento Region HOPWA Advisory Board, and President of the Homeless Resource Council of the Sierras. As Executive Director of the Sierra Foothills AIDS Foundation I manage many HIV related programs including, but not limited to, Ryan White, HOPWA, ADAP, HIV testing and counseling, Medi-Cal Waiver, food closet and nutritional counseling, HIV Outreach and Education, reentry for recently incarcerated, and HIV testing and discharge planning in the Placer, Nevada, and El Dorado County jails. I am dedicated to the goal of ending new HIV infections and ensuring access to care, treatment, and sustainable housing to everyone living with HIV throughout all of California.

## TONY SILLEMON



### ***AT-LARGE (COMMUNITY/STAKEHOLDER) MEMBER***

**OCCUPATION:** Administrative Manager

**EMPLOYER:** Alta Bates Medical Center, East Bay AIDS Center (EBAC)

**COUNTY:** Alameda

**PROFESSIONAL/VOLUNTEER:** Ryan White Part A Grantee, Ryan White Part D Grantee, Ryan White Minority AIDS Initiative (MAI), HIV Prevention, Mental Health

**POPULATIONS AND/OR GROUPS:** Young MSM of color, African American and Latino

**MEMBER BIO:** Dr. Tony Sillemon has worked in the social services/HIV/AIDS arena in San Joaquin, Alameda, and Contra Costa Counties for the past 13 years. He is Board President for Urban Coalition for HIV/AIDS Prevention Services (UCHAPS) and Interim Executive Director which is a partnership of community members and health department representatives from urban jurisdictions most heavily impacted by HIV/AIDS. UCHAPS member jurisdictions represent over one-third of the nation's epidemic, are among the epicenters of the urban HIV epidemic, and are often at the forefront of piloting new intervention strategies.

Dr. Sillemon recently coordinated and hosted an extremely successful Speak Up, Speak Out Against Stigma educational forum for the African American Community in Oakland, California. He is a member of the California Planning Group (CPG) and a former co-chair of the Oakland TGA Collaborative community Planning Council. He provides personal counseling sessions and peer education tutelage for minority youth on the topics of gangs and violence, and on becoming nurturing fathers. As an added personal endeavor, Mr. Sillemon conducts successful support groups for both heterosexual and gay (MSM) identified men residing in Alameda County. Among his many awards, Sillemon has received a California Father of the Year Award, an African American Achievement Award, the Dr. Robert C. Scott Achievement Award (for excellence in the field of HIV/AIDS services in the African American community), the Alameda County World AIDS Day Treatment and Care Award, and the NAESM Achievement Award for his contribution in Black MSM community.

## TONY VIRAMONTES



NO IMAGE  
AVAILABLE

### **AT-LARGE (COMMUNITY/STAKEHOLDER) MEMBER**

#### **COMMUNITY CO-CHAIR**

**OCCUPATION:** Director of Prevention Services

**EMPLOYER:** LGBT Center - OC

**COUNTY:** Los Angeles

**PROFESSIONAL/VOLUNTEER:**

**POPULATIONS AND/OR GROUPS:**

**MEMBER BIO:** I am a Gay Latino activist, born and raised in Orange County. I received a Bachelor of Arts in Political Science and Legal Studies from the University of California Santa Cruz. Immediately after finishing my BA, I was accepted into UCSC's Theater Arts Graduate Program which I completed in 2006. While in Santa Cruz, I became an activist using theater. I use this platform to educate about the disparities that exist in my community. As the Director of Prevention Health and Transgender Services, I create positive changes for the LGBT community. During my six years with the LGBT Center OC, I have overseen the production of Hermosa y Protegida, the longest running transgender beauty pageant that empowers the transgender community and reduces HIV transmission and stigma. The pageant is attended by over 500 community members annually. I oversee our testing clinic and PROMISE, an evidence based prevention intervention. I'm responsible for the development of Trans\*itions, Orange County's only trans\*affirming health and wellness program. I am currently working on implementing OC's first needle exchange program. In my free time, I love creating art and building furniture in my wood shop.