

California Influenza Surveillance Project

Viral and Rickettsial Disease Laboratory

2008-2009

Influenza Update – Week 50 (December 7 – December 13, 2008)

National Influenza Activity:

During week 50 (December 7-13, 2008), a low level of influenza activity was reported in the United States. One hundred three (3.5%) specimens tested by U.S. World Health Organization (WHO) and National Respiratory and Enteric Virus Surveillance System (NREVSS) collaborating laboratories and reported to CDC/Influenza Division were positive for influenza. The proportion of deaths attributed to pneumonia and influenza (P&I) was below the epidemic threshold. One pediatric influenza-associated death was reported. The proportion of outpatient visits for influenza-like illness (ILI) was below the national baseline. The Mountain region reported ILI above their region-specific baseline. Three states reported local influenza activity; the District of Columbia, Puerto Rico and 36 states reported sporadic influenza activity; and 11 states reported no influenza activity.

California Influenza Activity:

Influenza activity, including sentinel provider outpatient influenza-like illnesses (ILI), Kaiser Permanente P&I (pneumonia and influenza) hospitalizations and influenza laboratory tests in both Northern and Southern California, remained sporadic (defined by the CDC as “Isolated cases of lab confirmed influenza in the state, but ILI activity is not increased”).

Kaiser Permanente inpatient, sentinel providers’ outpatient influenza-like illnesses, and Kaiser Permanente antiviral data:

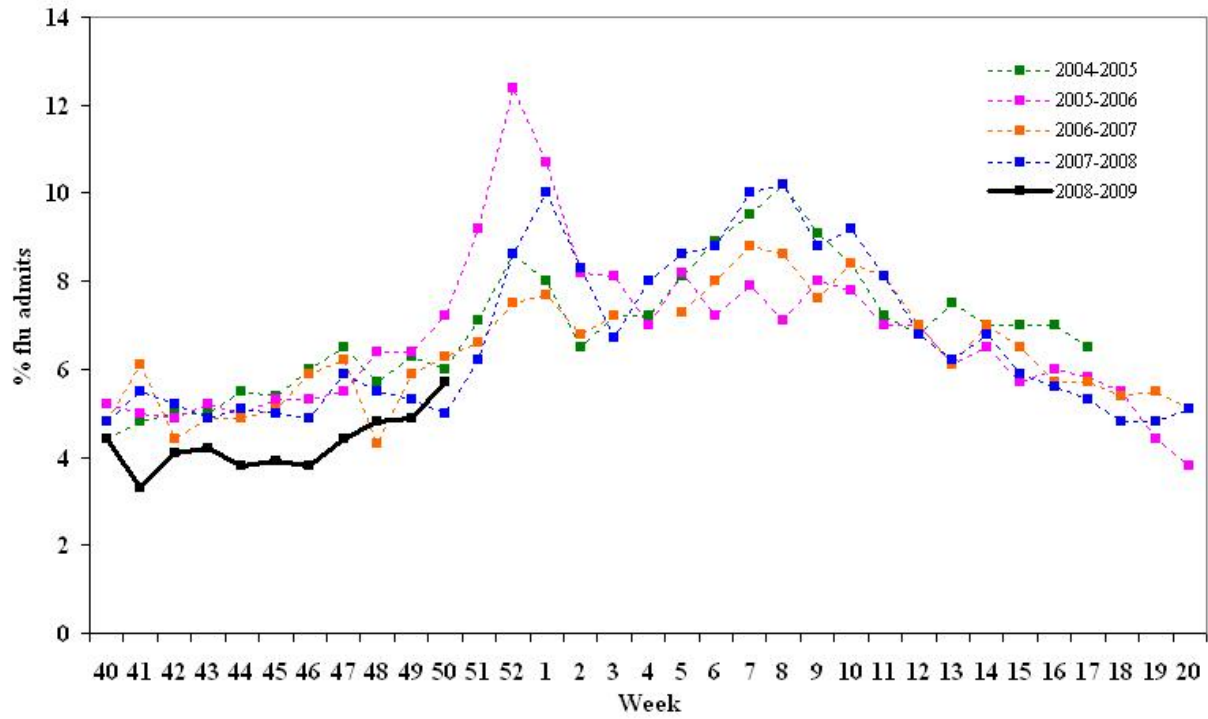
Week	Kaiser Inpatient Data % (range)*		Outpatient ILI Data %(# reported)‡	Kaiser Antiviral Data§	
	Northern CA	Southern CA		Northern CA	Southern CA
50	5.7 (0.8–8.9)	2.0 (0.0–5.0)	1.8 (82 reported)	62	56
Previous week	4.8 (1.4–9.7)	1.6 (0.7–3.0)	1.0 (97 reported)	47	73

* “Flu admissions” are present year-round. During the off-season, these consist chiefly of pneumonia, which represents approximately 3–5% of all admissions

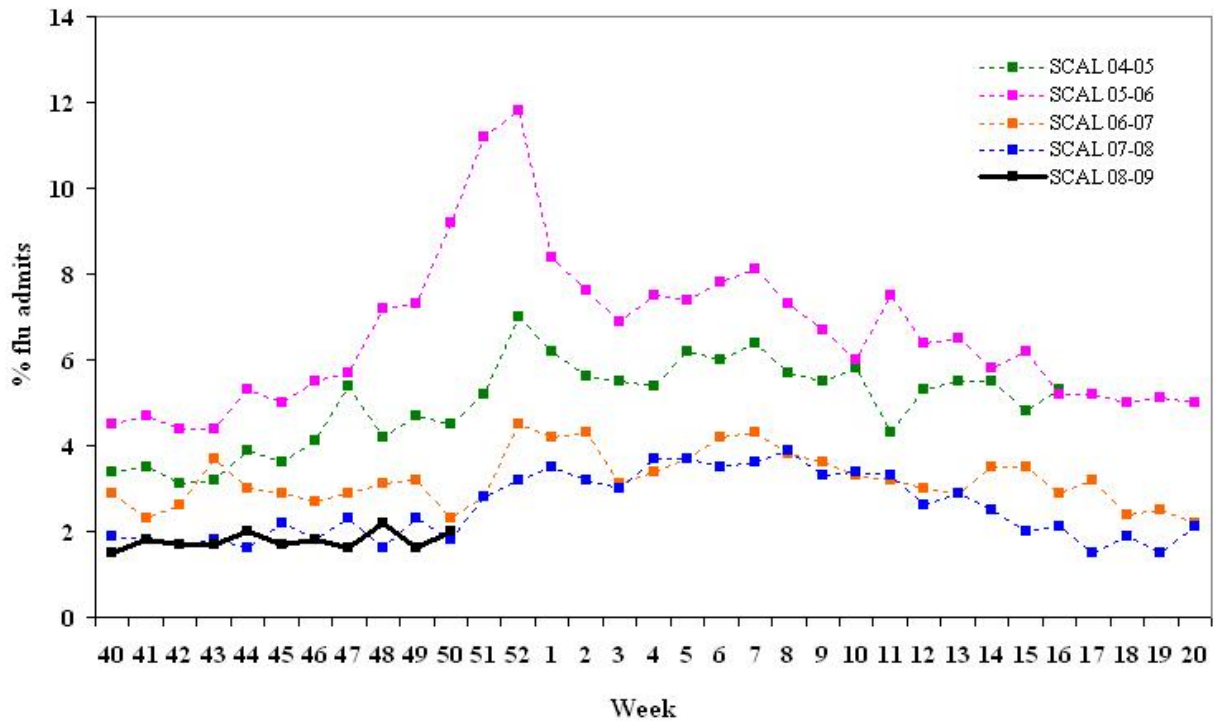
‡ The percentage of outpatient visits for influenza-like illness (ILI) is calculated by dividing the number of ILI visits by the total number of outpatient visits per week

§ The number of prescriptions filled for the antiviral drugs used for influenza (amantadine, rimantadine, zanamivir, and oseltamivir) by Kaiser outpatient pharmacies in California

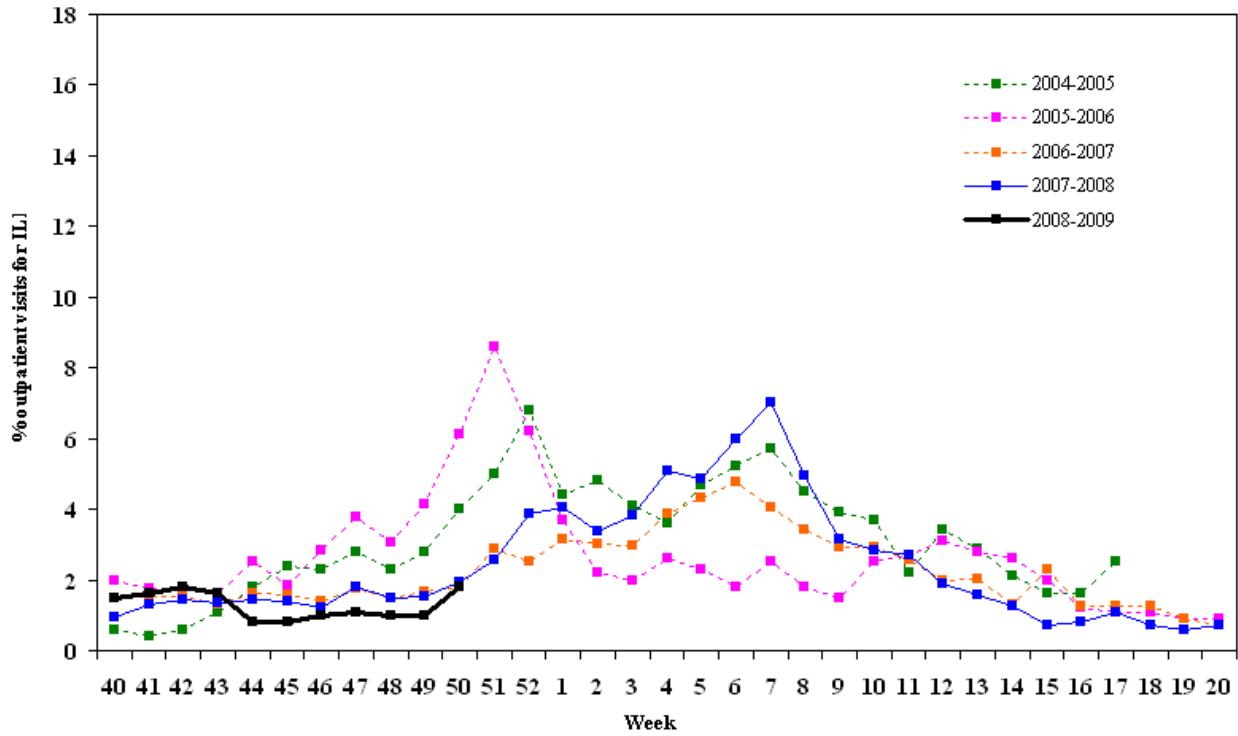
**Inpatient "Flu" Admissions 2004-2009
Northern California Kaiser**



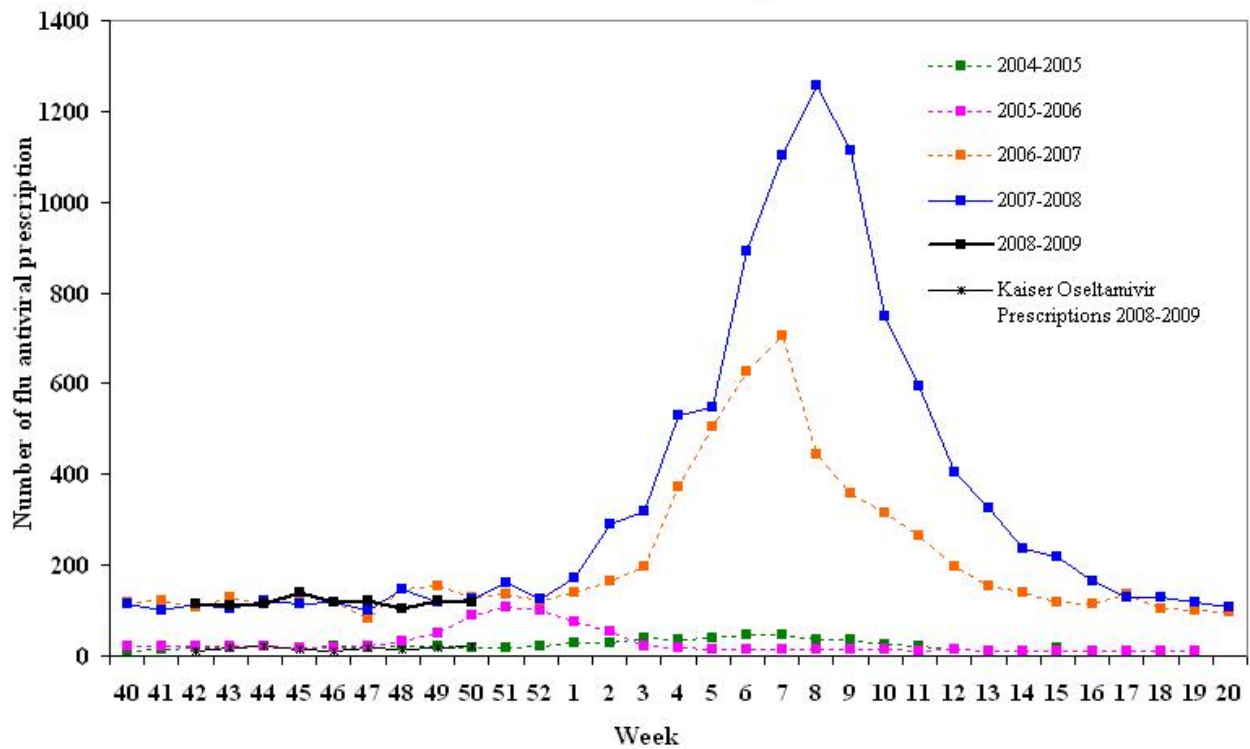
**Inpatient "Flu" Admissions 2004-2009
Southern California Kaiser**



California Sentinel Providers Influenza-Like Illness (ILI) Visits 2004-2009



Kaiser Pharmacy Data Influenza Antiviral Usage 2004-2009



Laboratory Data (viral isolation and detection)

		Sentinel Laboratories/Respiratory Laboratory Network [‡]	Sentinel Providers
Week 50	Number of Sites Reporting	26	44 specimens submitted through week 50 (4 pending, 2 positive by PCR)
	Influenza A	6 ^a Total to date: 29	1
	Influenza B	1 ^b Total to date: 10	1
	Influenza A/B	0 Total to date: 0	0
	RSV	211 ^c Total to date: 553	0
	Other Respiratory Viruses	8 ^d Total to date: 69	0

[‡]Sentinel laboratories are hospital, academic, private, and public health laboratories located throughout California that provide data on the number of laboratory-confirmed influenza and other respiratory virus detections and isolations. The Respiratory Laboratory Network (RLN) is a network of 23 local public health laboratories that offer enhanced diagnostic testing with the “R-mix” shell vial assay, which detects several respiratory pathogens, including influenza A and B viruses, respiratory syncytial virus, parainfluenza virus, and adenovirus. Some RLN labs also offer PCR testing for influenza A and B.

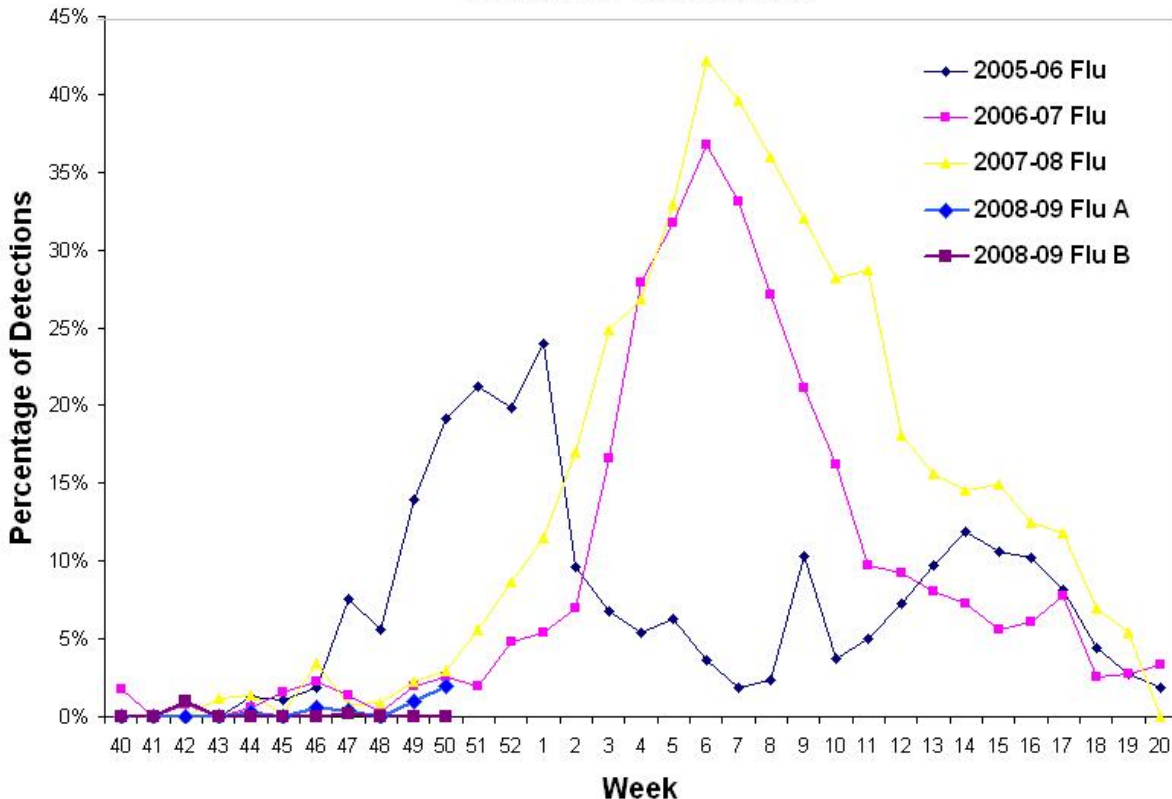
^a Alameda (1); San Bernardino (1); San Francisco (1); Santa Clara (2); Solano (1)

^b Sacramento (1)

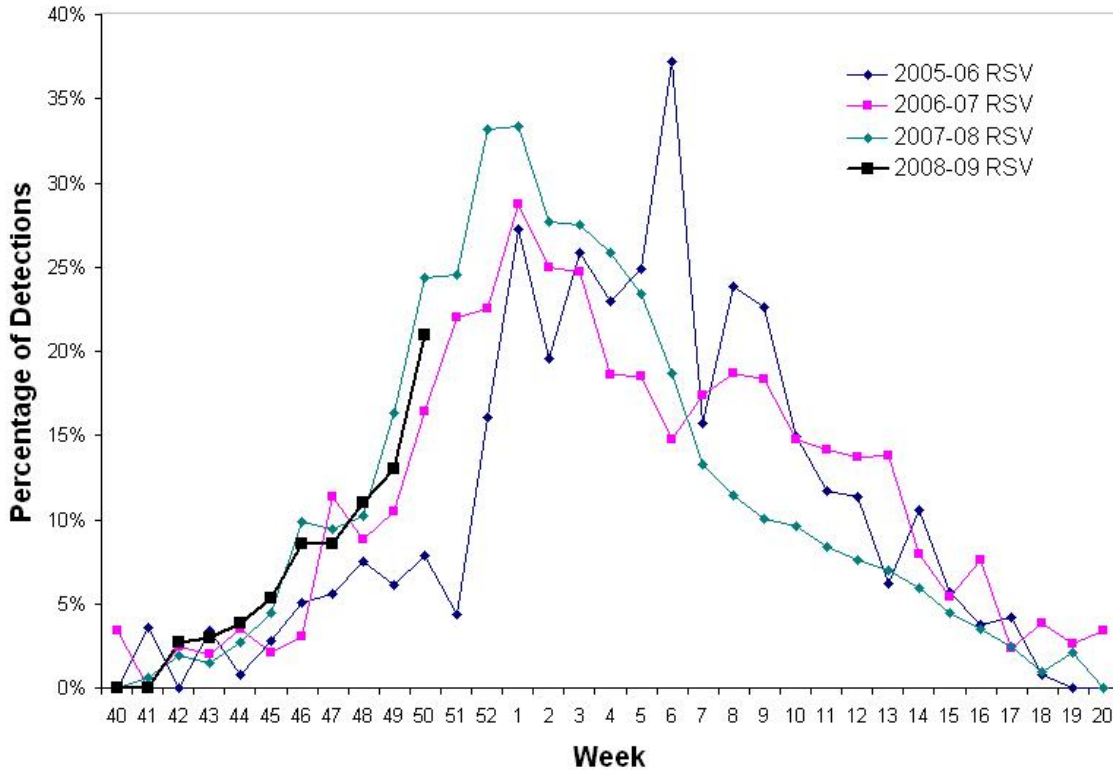
^c Alameda (28); Contra Costa (9); Fresno (3); Long Beach (18); Los Angeles (13); Marin (1); Napa (2); Placer (1); Riverside (1); Sacramento (19); San Diego (5); San Francisco (12); San Joaquin (6); San Mateo (27); Santa Clara (52); Solano (7); Sonoma (4); Stanislaus (1); Yolo (1); Unknown (1)

^d parainfluenza type 1 (1), parainfluenza type 2 (4); parainfluenza type 3 (1); adenovirus (2)

**Sentinel Laboratories/Respiratory Laboratory Network
Influenza Detections**



Sentinel Laboratories/Respiratory Laboratory Network RSV Detections



Respiratory Laboratory Network:

County Name	Rmix	PCR
Alameda	X	X
El Dorado	X	X
Contra Costa		X
Fresno	X	X
Humboldt		X
Imperial	X	
Long Beach	X	
Los Angeles	X	X
Monterey		X
Orange	X	X
Placer	X	X
Sacramento	X	
San Bernardino	X	X
San Diego	X	X
San Francisco	X	
San Joaquin	X	X
Santa Clara	X	X
Shasta	X	X
Solano	X	X
Sonoma	X	
Stanislaus	X	
Tulare	X	
Ventura	X	
VRDL	X	X

Please continue to assist us in recruiting primary care providers (physicians, nurse practitioners, and physician assistants) to be sentinel physicians in your area. For more information, contact Melissa Dahlke at flu@cdph.ca.gov or 510-620-3494.

For questions about the California Influenza Surveillance Project, please contact Erica Boston (erica.boston@cdph.ca.gov) or Janice Louie (janice.louie@cdph.ca.gov).