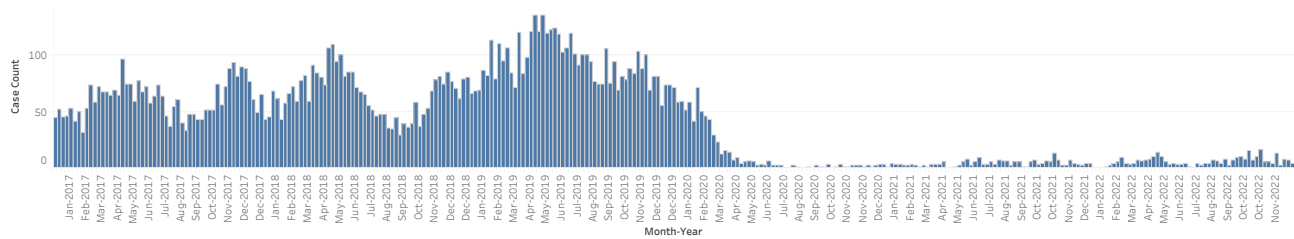


Pertussis Snapshot

Reported as of January 6, 2025

Figure 1. Year to date* pertussis case counts by week of onset -- California, 2017-2022



Report includes confirmed, probable, and suspect cases in 2017-2019 and confirmed and probable cases reported in 2020-2022. In 2020 the CSTE case definition was updated to include cases previously designated as suspect as confirmed

Table 1. Cumulative and year to date* pertussis case counts by health jurisdiction and year of onset -- 2017-2022

| Jurisdiction † | 2017 | | 2018 | | 2019 | | 2020 | | 2021 | | 2022 | |
|-----------------|--------|-----------|--------|-----------|--------|-----------|--------|-----------|--------|-----------|--------|-----------|
| | Total* | YTD Cases | Total* | YTD Cases | Total* | YTD Cases | Total* | YTD Cases | Total* | YTD Cases | Total* | YTD Cases |
| CALIFORNIA | 3,160 | 3,160 | 3,365 | 3,365 | 4,846 | 4,846 | 703 | 703 | 195 | 195 | 293 | 293 |
| ALAMEDA | 115 | 115 | 309 | 309 | 136 | 136 | 25 | 25 | 4 | 4 | 0 | 0 |
| BERKELEY | 8 | 8 | 17 | 17 | 9 | 9 | 2 | 2 | 0 | 0 | 1 | 1 |
| BUTTE | 4 | 4 | 7 | 7 | 9 | 9 | 4 | 4 | 0 | 0 | 0 | 0 |
| CALAVERAS | 1 | 1 | 0 | 0 | 1 | 1 | 1 | 1 | 0 | 0 | 0 | 0 |
| CONTRA COSTA | 49 | 49 | 110 | 110 | 92 | 92 | 17 | 17 | 7 | 7 | 2 | 2 |
| DEL NORTE | 0 | 0 | 0 | 0 | 0 | 0 | 7 | 7 | 0 | 0 | 0 | 0 |
| EL DORADO | 5 | 5 | 1 | 1 | 5 | 5 | 6 | 6 | 0 | 0 | 1 | 1 |
| FRESNO | 37 | 37 | 84 | 84 | 83 | 83 | 9 | 9 | 1 | 1 | 0 | 0 |
| HUMBOLDT | 0 | 0 | 0 | 0 | 12 | 12 | 2 | 2 | 0 | 0 | 0 | 0 |
| IMPERIAL | 1 | 1 | 6 | 6 | 23 | 23 | 4 | 4 | 0 | 0 | 0 | 0 |
| INYO | 4 | 4 | 0 | 0 | 3 | 3 | 1 | 1 | 0 | 0 | 1 | 1 |
| KERN | 18 | 18 | 35 | 35 | 58 | 58 | 22 | 22 | 1 | 1 | 1 | 1 |
| KINGS | 0 | 0 | 2 | 2 | 7 | 7 | 3 | 3 | 1 | 1 | 0 | 0 |
| LAKE | 9 | 9 | 1 | 1 | 3 | 3 | 0 | 0 | 1 | 1 | 0 | 0 |
| LOS ANGELES ‡ | 558 | 558 | 478 | 478 | 1,609 | 1,609 | 86 | 86 | 44 | 44 | 83 | 83 |
| LONG BEACH | 19 | 19 | 29 | 29 | 85 | 85 | 9 | 9 | 0 | 0 | 2 | 2 |
| PASADENA | 5 | 5 | 4 | 4 | 18 | 18 | 2 | 2 | 1 | 1 | 1 | 1 |
| MADERA | 7 | 7 | 31 | 31 | 34 | 34 | 5 | 5 | 1 | 1 | 13 | 13 |
| MARIN | 40 | 40 | 245 | 245 | 72 | 72 | 5 | 5 | 0 | 0 | 1 | 1 |
| MARIPOSA | 0 | 0 | 3 | 3 | 2 | 2 | 0 | 0 | 0 | 0 | 0 | 0 |
| MENDOCINO | 3 | 3 | 2 | 2 | 8 | 8 | 1 | 1 | 0 | 0 | 2 | 2 |
| MERCED | 2 | 2 | 10 | 10 | 11 | 11 | 0 | 0 | 0 | 0 | 0 | 0 |
| MODOC | 0 | 0 | 0 | 0 | 3 | 3 | 1 | 1 | 0 | 0 | 0 | 0 |
| MONO | 0 | 0 | 0 | 0 | 0 | 0 | 0 | 0 | 1 | 1 | 0 | 0 |
| MONTEREY | 28 | 28 | 35 | 35 | 63 | 63 | 18 | 18 | 2 | 2 | 6 | 6 |
| NAPA | 12 | 12 | 20 | 20 | 28 | 28 | 9 | 9 | 0 | 0 | 4 | 4 |
| NEVADA | 2 | 2 | 13 | 13 | 15 | 15 | 3 | 3 | 0 | 0 | 0 | 0 |
| ORANGE | 198 | 198 | 171 | 171 | 188 | 188 | 40 | 40 | 9 | 9 | 8 | 8 |
| PLACER | 83 | 83 | 27 | 27 | 44 | 44 | 8 | 8 | 1 | 1 | 0 | 0 |
| PLUMAS | 0 | 0 | 0 | 0 | 5 | 5 | 0 | 0 | 0 | 0 | 0 | 0 |
| RIVERSIDE | 136 | 136 | 69 | 69 | 128 | 128 | 22 | 22 | 17 | 17 | 19 | 19 |
| SACRAMENTO | 67 | 67 | 95 | 95 | 115 | 115 | 43 | 43 | 9 | 9 | 11 | 11 |
| SAN BENITO | 3 | 3 | 3 | 3 | 8 | 8 | 1 | 1 | 0 | 0 | 0 | 0 |
| SAN BERNARDINO | 44 | 44 | 31 | 31 | 53 | 53 | 10 | 10 | 0 | 0 | 2 | 2 |
| SAN DIEGO | 1,163 | 1,163 | 650 | 650 | 831 | 831 | 219 | 219 | 70 | 70 | 102 | 102 |
| SAN FRANCISCO | 35 | 35 | 34 | 34 | 41 | 41 | 6 | 6 | 1 | 1 | 0 | 0 |
| SAN JOAQUIN | 9 | 9 | 25 | 25 | 26 | 26 | 2 | 2 | 1 | 1 | 0 | 0 |
| SAN LUIS OBISPO | 15 | 15 | 21 | 21 | 22 | 22 | 5 | 5 | 4 | 4 | 4 | 4 |
| SAN MATEO | 66 | 66 | 113 | 113 | 131 | 131 | 13 | 13 | 2 | 2 | 1 | 1 |
| SANTA BARBARA | 9 | 9 | 23 | 23 | 27 | 27 | 10 | 10 | 2 | 2 | 2 | 2 |
| SANTA CLARA | 188 | 188 | 181 | 181 | 261 | 261 | 18 | 18 | 4 | 4 | 5 | 5 |
| SANTA CRUZ | 45 | 45 | 169 | 169 | 248 | 248 | 20 | 20 | 2 | 2 | 0 | 0 |
| SHASTA | 2 | 2 | 0 | 0 | 8 | 8 | 0 | 0 | 2 | 2 | 1 | 1 |
| SISKIYOU | 3 | 3 | 0 | 0 | 0 | 0 | 2 | 2 | 0 | 0 | 0 | 0 |
| SOLANO | 14 | 14 | 49 | 49 | 12 | 12 | 3 | 3 | 0 | 0 | 1 | 1 |
| SONOMA | 20 | 20 | 149 | 149 | 104 | 104 | 5 | 5 | 0 | 0 | 2 | 2 |
| STANISLAUS | 5 | 5 | 11 | 11 | 31 | 31 | 2 | 2 | 0 | 0 | 0 | 0 |
| SUTTER | 4 | 4 | 0 | 0 | 1 | 1 | 1 | 1 | 0 | 0 | 1 | 1 |
| TEHAMA | 1 | 1 | 0 | 0 | 1 | 1 | 0 | 0 | 0 | 0 | 0 | 0 |
| TRINITY | 0 | 0 | 0 | 0 | 1 | 1 | 0 | 0 | 0 | 0 | 0 | 0 |
| TULARE | 11 | 11 | 8 | 8 | 31 | 31 | 6 | 6 | 4 | 4 | 5 | 5 |
| TUOLUMNE | 5 | 5 | 1 | 1 | 1 | 1 | 0 | 0 | 0 | 0 | 0 | 0 |
| VENTURA | 71 | 71 | 66 | 66 | 105 | 105 | 18 | 18 | 3 | 3 | 10 | 10 |
| YOLO | 5 | 5 | 24 | 24 | 32 | 32 | 3 | 3 | 0 | 0 | 1 | 1 |
| YUBA | 31 | 31 | 3 | 3 | 2 | 2 | 4 | 4 | 0 | 0 | 0 | 0 |

Table 2. Cumulative and year to date* pertussis case counts and deaths among infants <4 months of age by year of onset -- California, 2017-2022

| Jurisdiction | 2017 | | 2018 | | 2019 | | 2020 | | 2021 | | 2022 | |
|--------------|--------|---------|--------|---------|--------|---------|--------|---------|--------|---------|--------|---------|
| | Total* | Deaths* | Total* | Deaths* | Total* | Deaths* | Total* | Deaths* | Total* | Deaths* | Total* | Deaths* |
| CALIFORNIA | 127 | 0 | 137 | 1 | 205 | 1 | 45 | 0 | 11 | 0 | 14 | 0 |

* Total counts include cases for the entire year; year to date (YTD) counts include cases reported with an onset date between January 1 and December 31. Total and YTD counts for the current year will be the same.

† Counties with no cases reported between 2017-2022 are excluded from the table above. City health jurisdictions (Berkeley, Pasadena, and Long Beach) are excluded from county total.