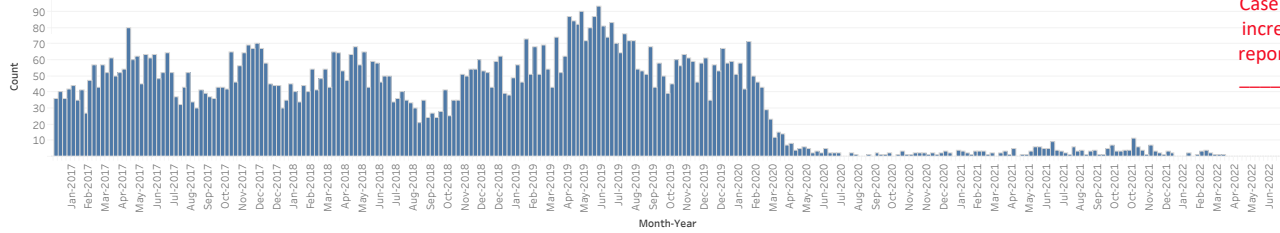




# Pertussis Snapshot

Reported as of March 31, 2022

Figure 1. Year to date\* pertussis case counts by week of onset -- California, 2017-2022



Case counts will increase due to reporting delays

Table 1. Cumulative and year to date\* pertussis case counts by health jurisdiction and year of onset -- 2017-2022

| Jurisdiction†   | 2017   |           | 2018   |           | 2019   |           | 2020   |           | 2021   |           | 2022   |           |
|-----------------|--------|-----------|--------|-----------|--------|-----------|--------|-----------|--------|-----------|--------|-----------|
|                 | Total* | YTD Cases | Total* | YTD Cases | Total* | YTD Cases | Total* | YTD Cases | Total* | YTD Cases | Total* | YTD Cases |
| CALIFORNIA      | 2,591  | 545       | 2,326  | 545       | 3,230  | 691       | 701    | 597       | 169    | 27        | 18     | 18        |
| ALAMEDA         | 79     | 17        | 187    | 42        | 90     | 19        | 25     | 22        | 4      | 1         | 0      | 0         |
| BERKELEY        | 8      | 1         | 8      | 3         | 4      | 0         | 2      | 0         | 0      | 0         | 0      | 0         |
| BUTTE           | 4      | 0         | 6      | 2         | 5      | 0         | 4      | 3         | 2      | 0         | 0      | 0         |
| CALAVERAS       | 0      | 0         | 0      | 0         | 0      | 0         | 1      | 0         | 0      | 0         | 0      | 0         |
| CONTRA COSTA    | 43     | 6         | 58     | 17        | 56     | 5         | 17     | 17        | 7      | 2         | 1      | 1         |
| DEL NORTE       | 0      | 0         | 0      | 0         | 0      | 0         | 7      | 5         | 0      | 0         | 0      | 0         |
| EL DORADO       | 5      | 0         | 0      | 0         | 1      | 1         | 6      | 5         | 0      | 0         | 0      | 0         |
| FRESNO          | 36     | 4         | 65     | 6         | 64     | 16        | 9      | 5         | 1      | 0         | 0      | 0         |
| HUMBOLDT        | 0      | 0         | 0      | 0         | 5      | 0         | 2      | 1         | 0      | 0         | 0      | 0         |
| IMPERIAL        | 0      | 0         | 4      | 0         | 15     | 1         | 4      | 4         | 1      | 1         | 0      | 0         |
| INYO            | 4      | 0         | 0      | 0         | 0      | 0         | 1      | 0         | 0      | 0         | 0      | 0         |
| KERN            | 16     | 8         | 32     | 7         | 55     | 9         | 22     | 17        | 2      | 0         | 0      | 0         |
| KINGS           | 0      | 0         | 2      | 0         | 6      | 1         | 3      | 3         | 1      | 0         | 0      | 0         |
| LAKE            | 8      | 0         | 0      | 0         | 0      | 0         | 0      | 0         | 1      | 0         | 0      | 0         |
| LOS ANGELES‡    | 476    | 112       | 416    | 81        | 1,008  | 231       | 87     | 80        | 0      | 0         | 0      | 0         |
| LONG BEACH      | 19     | 0         | 21     | 4         | 55     | 14        | 9      | 9         | 0      | 0         | 1      | 1         |
| PASADENA        | 4      | 1         | 3      | 0         | 12     | 6         | 2      | 2         | 2      | 1         | 0      | 0         |
| MADERA          | 7      | 1         | 24     | 2         | 29     | 5         | 3      | 2         | 2      | 0         | 1      | 1         |
| MARIN           | 28     | 9         | 90     | 28        | 27     | 15        | 5      | 5         | 0      | 0         | 0      | 0         |
| MARIPOSA        | 0      | 0         | 3      | 0         | 1      | 0         | 0      | 0         | 0      | 0         | 0      | 0         |
| MENDOCINO       | 2      | 1         | 0      | 0         | 3      | 0         | 1      | 1         | 0      | 0         | 0      | 0         |
| MERCED          | 1      | 0         | 9      | 2         | 8      | 2         | 0      | 0         | 0      | 0         | 0      | 0         |
| MODOC           | 0      | 0         | 0      | 0         | 0      | 0         | 1      | 0         | 0      | 0         | 0      | 0         |
| MONO            | 0      | 0         | 0      | 0         | 0      | 0         | 0      | 0         | 1      | 0         | 0      | 0         |
| MONTEREY        | 24     | 1         | 28     | 3         | 55     | 5         | 18     | 17        | 2      | 0         | 0      | 0         |
| NAPA            | 11     | 0         | 14     | 2         | 14     | 5         | 9      | 7         | 1      | 0         | 0      | 0         |
| NEVADA          | 2      | 1         | 12     | 0         | 6      | 0         | 3      | 3         | 0      | 0         | 1      | 1         |
| ORANGE          | 187    | 31        | 144    | 43        | 151    | 23        | 40     | 32        | 9      | 3         | 1      | 1         |
| PLACER          | 77     | 14        | 19     | 14        | 29     | 0         | 8      | 5         | 1      | 0         | 0      | 0         |
| PLUMAS          | 0      | 0         | 0      | 0         | 1      | 0         | 0      | 0         | 2      | 0         | 0      | 0         |
| RIVERSIDE       | 125    | 17        | 53     | 12        | 76     | 12        | 22     | 21        | 33     | 6         | 1      | 1         |
| SACRAMENTO      | 51     | 6         | 84     | 30        | 98     | 23        | 43     | 35        | 5      | 0         | 0      | 0         |
| SAN BENITO      | 1      | 1         | 0      | 0         | 4      | 0         | 1      | 1         | 0      | 0         | 0      | 0         |
| SAN BERNARDINO  | 35     | 9         | 18     | 6         | 41     | 4         | 10     | 7         | 0      | 0         | 2      | 2         |
| SAN DIEGO       | 911    | 172       | 434    | 149       | 630    | 116       | 219    | 191       | 67     | 10        | 9      | 9         |
| SAN FRANCISCO   | 30     | 6         | 29     | 1         | 29     | 10        | 6      | 4         | 1      | 0         | 0      | 0         |
| SAN JOAQUIN     | 5      | 0         | 22     | 3         | 17     | 0         | 2      | 2         | 1      | 0         | 0      | 0         |
| SAN LUIS OBISPO | 14     | 3         | 13     | 0         | 18     | 6         | 5      | 4         | 6      | 0         | 0      | 0         |
| SAN MATEO       | 45     | 18        | 58     | 20        | 48     | 19        | 13     | 13        | 2      | 0         | 0      | 0         |
| SANTA BARBARA   | 8      | 1         | 17     | 6         | 17     | 3         | 10     | 7         | 2      | 0         | 0      | 0         |
| SANTA CLARA     | 153    | 69        | 149    | 27        | 172    | 28        | 18     | 16        | 4      | 2         | 0      | 0         |
| SANTA CRUZ      | 39     | 4         | 149    | 11        | 211    | 68        | 20     | 20        | 2      | 0         | 0      | 0         |
| SHASTA          | 1      | 1         | 0      | 0         | 6      | 1         | 0      | 0         | 2      | 0         | 0      | 0         |
| SISKIYOU        | 3      | 1         | 0      | 0         | 0      | 0         | 2      | 0         | 0      | 0         | 0      | 0         |
| SOLANO          | 14     | 4         | 4      | 0         | 2      | 1         | 3      | 3         | 0      | 0         | 1      | 1         |
| SONOMA          | 13     | 3         | 70     | 5         | 21     | 10        | 5      | 4         | 0      | 0         | 0      | 0         |
| STANISLAUS      | 5      | 2         | 10     | 0         | 22     | 8         | 2      | 2         | 0      | 0         | 0      | 0         |
| SUTTER          | 2      | 0         | 0      | 0         | 1      | 0         | 1      | 0         | 1      | 0         | 0      | 0         |
| TEHAMA          | 1      | 0         | 0      | 0         | 0      | 0         | 0      | 0         | 0      | 0         | 0      | 0         |
| TRINITY         | 0      | 0         | 0      | 0         | 1      | 0         | 0      | 0         | 0      | 0         | 0      | 0         |
| TULARE          | 11     | 2         | 7      | 2         | 28     | 4         | 5      | 2         | 2      | 1         | 0      | 0         |
| TUOLUMNE        | 5      | 5         | 1      | 0         | 1      | 0         | 0      | 0         | 0      | 0         | 0      | 0         |
| VENTURA         | 56     | 6         | 50     | 10        | 72     | 19        | 18     | 15        | 2      | 0         | 0      | 0         |
| YOLO            | 4      | 0         | 10     | 5         | 14     | 1         | 3      | 3         | 0      | 0         | 0      | 0         |
| YUBA            | 18     | 8         | 3      | 2         | 1      | 0         | 4      | 0         | 0      | 0         | 0      | 0         |

Table 2. Cumulative and year to date\* pertussis case counts and deaths among infants <4 months of age by year of onset -- California, 2017-2022

|            | 2017   |         | 2018   |         | 2019   |         | 2020   |         | 2021   |         | 2022   |         |
|------------|--------|---------|--------|---------|--------|---------|--------|---------|--------|---------|--------|---------|
|            | Total* | Deaths* | Total* | Deaths* | Total* | Deaths* | Total* | Deaths* | Total* | Deaths* | Total* | Deaths* |
| CALIFORNIA | 112    | 0       | 119    | 1       | 180    | 1       | 45     | 0       | 8      | 0       | 1      | 1       |

\* Total counts include cases for the entire year; year to date (YTD) counts include cases reported with an onset date between January 1 and March 31. Total and YTD counts for the current year will be the same.

† Counties with no cases reported between 2017-2022 are excluded from the table above. City health jurisdictions (Berkeley, Pasadena, and Long Beach) are excluded from county total.

‡ Due to delays in reporting, CDPH will include preliminary Los Angeles County cases in order to effectively track the epidemiology of pertussis in the state effective August 19, 2019.

Notes:

- This report should be viewed as a preliminary "snapshot" of pertussis activity. Because data are preliminary, the information may be updated in later reports as additional case reports are received.

- Reports include probable and confirmed cases based on the Council of State and Territorial Epidemiologists (CSTE) case definition current at the year of report. Case counts reflect a case definition change in 2020.