

Kindergarten Immunization Assessment, 2024-2025

Executive summary

Immunization requirements for school entry help protect children and communities from vaccine-preventable diseases. Schools in California are required to report student immunization status to the California Department of Public Health (CDPH) every year. This report summarizes California student immunization rates reported at kindergarten in the 2024-2025 school year.

Schools reported immunization status for 590,849 students in kindergarten in 2024-2025. The proportion of students reported as having received all required immunizations was 93.7%, similar to 2023-2024. Statewide rates for specific immunizations remained high: 95.1% for required doses of diphtheria, tetanus and pertussis (DTaP), 95.7% for varicella, 96.0% for polio, 96.1% for measles, mumps and rubella (MMR), and 97.2% for hepatitis B. Rates continue to vary widely by county.

Among students reported as missing required immunizations in 2024-2025, the proportions of conditional entrants, 1.9%, and overdue, 1.2%, were lower than in 2023-2024. Permanent medical exemption rates remained at 0.1%. The proportion of students reported as lacking immunizations and receiving individualized education program services, attending a home-based private school, or a public independent study program without classroom-based instruction increased to 3.1%.

CDPH and local health departments in California continue to closely monitor immunization coverage of students and to support schools in protecting the health of their students and communities.

Introduction

This report summarizes immunization status of students in kindergarten reported by schools in the 2024-2025 school year. All schools with kindergartens in California are required to report annually on student compliance with immunization requirements per California Health and Safety Code Sections 120325-120375. In 2021-2022 and 2022-2023, schools were also required to report immunization status of first grade students to follow immunization trends during the COVID-19 pandemic. Many public schools offer transitional kindergarten as the first year of a two-year kindergarten program, and transitional kindergarten student immunization data are included in overall kindergarten student immunization data.

Over the past decade, California laws have modified:

- Medical exemptions to required immunizations: Since 2021, per Senate Bills [\(SB\) 276](#) and [SB 714](#), new medical exemptions for school and child care entry must be issued through CAIR-ME, an electronic statewide database, by physicians and surgeons licensed with the Medical Board or Osteopathic Medical Board of California and meet criteria for appropriate exemptions from the Centers for Disease Control and Prevention, Advisory Committee on Immunization Practices, and American Academy of Pediatrics.
- Personal beliefs exemptions (PBEs): PBEs have not been permitted since 2016 per [SB 277](#).

- Required doses: Since 2019, students entering kindergarten are required to receive two rather than one dose of varicella (chickenpox) vaccine due to changes in the [California Code of Regulations](#).

Methods

During the autumn of 2024-2025, schools registered with the California Department of Education reported to CDPH on immunization data of kindergarteners. Based on their immunization status, students were classified by school staff into the following categories:

- Received all required immunizations, including the following doses:
 - 5 or more of diphtheria, tetanus and pertussis (DTaP) vaccine (4 doses are acceptable if at least 1 dose was received on or after the fourth birthday): ['4+ DTaP'];
 - 4 or more of polio vaccine (3 doses are acceptable if at least 1 dose was received on or after the fourth birthday): ['3+ Polio'];
 - 2 doses of measles, mumps and rubella (MMR) vaccine or two doses of measles, two doses of mumps, and one dose of rubella vaccine, separately or combined, on or after the first birthday: ['2+ MMR'];
 - 3 or more of hepatitis B vaccine: ['3+ Hep B'], and
 - 2 or more of varicella: ['2+ Var']. History of chickenpox disease is currently required to be reported as a permanent medical exemption. From 2000-2019, the requirement was for 1 or more doses of varicella vaccine or a history documented by a physician of having had disease.
- Conditional entrants who had:
 - A temporary medical exemption to one or more required immunizations, or
 - Not received all required doses but were not overdue for required doses. Conditional entrants are required to receive additional doses after entry.
- Children overdue for one or more required immunizations and subject to exclusion from school until the overdue doses have been received.
- Have a permanent medical exemption (PME) to one or more required immunizations.
- Other students lacking immunizations: Under SB 277, entrants since the 2016-2017 school year have not been required to have immunizations if they attend:
 - A public independent study program and do not receive classroom-based instruction or
 - A home-based private school.
 - In addition, students who have an individualized education program (IEP) may continue to receive all necessary services identified in their IEP regardless of their immunization status.

Schools are still required to request, maintain, and report records of immunizations that have been received for these students. Students in these settings were classified in this category if they lacked required immunizations and did not meet the criteria for other categories.

Personal beliefs exemptions (PBEs) have no longer been an option for children entering kindergarten since the 2016-2017 school year under SB 277.

Starting in the 2016-2017 school year, any immunizations received by children with PBEs, PME, or other exemptions for different immunizations are reported in the completion rates of each specific required immunization series (e.g., 4+ DTaP, 2+ MMR, etc.).

Due to rounding, total figures may differ from the total sums of their components. Differences were calculated between exact figures, varying at times by 0.1% from the differences between rounded figures.

Results

In 2024-2025, 7,915 schools reported the immunization status of 590,849 transitional and traditional kindergarten students (Table 1). Similar to previous years, public schools accounted for the majority of schools reporting kindergarten education (6,158 public schools; 78% of all schools) and kindergarten students (545,169 public students; 92% of all students). Most nonreporting schools were private (249 out of 292, 85%). The enrollment at nonreporting schools in 2024-2025 was less than 0.5% of total enrollment.

All required immunizations: Among the 590,849 reported students, 93.7% had received all required immunizations in 2024-2025, similar to 2023-2024 (Table 1 and Figure 1). Among public school students, 93.6% were reported with all required immunizations which was 1% lower than the rate of 94.6% reported among private school students. In previous years, public school rates were usually higher than private school rates. Of 41,003 (6.9%) students attending virtual schools, 28,604 (69.8%) were reported with all required immunizations (see below).

Specific immunization series: Completion rates for specific immunization series among kindergarteners remained above 95% in 2024-2025: 95.1% for DTaP, 95.7% for varicella, 96.0% for polio, 96.1% for MMR, and 97.2% for hepatitis B (Table 1 and Figure 2). MMR was 96.1% among public school students and 96.3% among private school students. DTaP, polio, and MMR rates decreased in public schools, but increased in private schools in 2024-2025 compared to 2023-2024.

Conditional entrants: Conditional entrants were reported as 1.9% of all kindergarteners in 2024-2025 as compared to 2.0% in 2023-2024. Among conditional entrants, few students were reported as having temporary medical exemptions (376 out of 11,517; 0.1% of all students).

Overdue students: The proportion of students reported as overdue for required immunizations was 1.2% in 2024-2025 and has been steadily decreasing from a high of 4.0% in 2020-2021. Overdue students were 1.1% of public school and 2.4% of private school students reported in 2024-2025.

Permanent medical exemptions: The proportion of kindergarteners reported with PME was 0.1% in 2024-2025, similar to 2023-2024 (Table 1 and Figure 3). Both public and private schools reported fewer medical exemptions in 2024-2025 compared to previous years.

Other students lacking immunizations: The proportion of students reported as lacking one or more required immunizations who receive IEP services, attend a home-based private school, or attend a public independent study program and do not receive

classroom-based instruction was 3.1% in 2024-2025 (Table 1 and Figure 4). This category has been steadily increasing from 0.5% in 2016-2017 when SB 277 went into effect. Most of these students were enrolled in public independent study programs (13,327 out of 18,142; 73% for category, 2.3% of all students).

County-level immunization rates: Similar to prior years, immunization rates varied widely by county, with lower rates in northern and central regions (Table 2 and Figure 5). In 2024-2025, 12 (21%) of 58 counties reported kindergarten all required immunization rates below 90%, compared to 14 (24%) counties in 2023-2024.

Students in virtual schools are often exempt from immunization requirements. Virtual schools are based in a specified county but may enroll children who reside in other counties. Similar to prior years, some counties with a higher proportion of virtual schools have reported amongst the lowest immunization rates in California:

County	% of students in virtual schools	Immunization rate		
		Overall	Classroom-based schools	Virtual schools
Sutter	20.6%	70.4%	83.6%	19.4%
El Dorado	38.3%	74.2%	95.6%	39.6%
Glenn	20.4%	80.9%	96.8%	18.9%
Kern	24.1%	85.4%	93.7%	59.4%

MMR rates by county ranged from 76.6% to more than 99%, with a similar regional pattern as all required immunization rates (Table 2 and Figure 6). The number of counties reporting kindergarten MMR rates below 95% was 15 (26%) in 2024-2025, including 5 counties with MMR rates lower than 90%.

Discussion

California schools continue to comply at high levels in reporting on immunization of their students. In 2024-2025, 99.3% of public schools and 87.6% of private schools reported student immunization status, including more than 99% of all kindergarten students counted in [California Department of Education \(CDE\) enrollment data](#). Enrollment in transitional kindergarten increased by 17% from 2023-2024 to 2024-2025 with ongoing phased implementation of [universal transitional kindergarten](#), while traditional kindergarten enrollment decreased by 2%. All kindergarten students are required to have immunizations at entry, and the immunization reporting process does not distinguish between transitional versus traditional kindergarten students.

The proportion of all kindergarten students reported as receiving all required immunizations was 93.7% in 2024-2025, similar to 2023-2024 but decreased from 94.1% in 2022-2023. First grade immunization rates were higher than kindergarten immunization rates in 2021-2022 and 2022-2023. Immunization rates in public schools were lower than in private schools, in contrast to previous

years.

Medical exemptions remained low, with 0.1% of students reported with permanent medical exemptions and 0.1% with temporary medical exemptions. Medical exemptions have decreased since implementation of CAIR-ME in 2021 per SB 276 and SB 714.

The proportion of students who did not meet all required immunizations and were reported in other categories of exemptions in SB 277 continued to increase, from 2.3% in 2022-2023 to 2.7% in 2023-2024 to 3.1% in 2024-2025. Most of the students in this category were reported as being enrolled in public school independent study programs without classroom-based instruction. Expansion of independent study programs occurred during the COVID-19 pandemic, but the total number of students statewide in independent study programs, with or without classroom-based instruction, is unclear.

California immunization rates remained higher than national rates reported by [CDC](#) in 2024-2025:

	DTaP	Hep B	MMR	Polio	Varicella: 2 doses
California	95.1%	97.2%	96.1%	96.0%	95.7%
U.S.	92.1%	94.0%	92.5%	92.5%	92.1%

Although state-wide immunization levels among kindergarten students remained high in 2024-2025, regional differences persisted, with 26% of counties reporting kindergarten MMR rates below 95%, an approximate threshold necessary to prevent the transmission of measles. Large measles outbreaks seen in other states in 2025 were associated with lower immunization rates and high exemption rates.

California's immunization requirements help protect children and communities from vaccine-preventable diseases. Children in schools and regions with lower immunization rates remain at higher risk of contracting and transmitting vaccine preventable diseases. Efforts to monitor, support, and increase immunizations to protect students should continue in all communities.

Limitations

This report is subject to limitations that include:

- Immunization rates of transitional kindergarten students are not reported separately from overall kindergarten students. Most transitional kindergarten students are at least 4 years old on entry, however some students could be 3 years old at time of entry and would need to wait until their fourth birthday to receive required immunizations such as a second dose of MMR. Immunization data for these students may be incomplete at the time of reporting, which could result in underestimates of immunization rates.
- Schools report the number of students lacking immunizations who are in public independent study programs and do not receive classroom-based instruction. CDE data on student enrollment in independent study courses are not yet available for the 2019-

2025 school years to verify information reported by schools. Any misclassification of student status could lead to incorrectly applied school immunization requirements and bias the reported immunization rates in either direction.

- CDPH does not know the immunization status of any kindergarten students attending schools that registered with CDE but did not report. In 2024-2025, 292 California schools listed with CDE did not report on school immunizations, including 249 private schools and 43 public schools. Underreporting could have biased the reported immunization rates in either direction. The schools that did not report educate a very small proportion of all students.
- Similar to previous years, [CDE private school data](#) and thus immunization reporting to CDPH are limited to private schools with enrollment of 6 or more students. This data limitation may result in underestimates of private school enrollment, including for home schools, and overestimates of private school immunization rates.
- CDE only collects information on distance learning with partially, primarily or exclusively virtual programs from public schools. Lack of data on virtual programs in private schools may underestimate the magnitude of difference between immunization rates in virtual versus classroom-based schools.
- Completeness of immunization records and school reporting might have been reduced during the initial part of the COVID-19 pandemic and resulted in underestimates of immunization rates, especially during 2020-2021 and 2021-2022.
- The timing of immunization is often not included in the assessment criteria; if doses were given at inappropriate ages or intervals, reported rates may overestimate levels of immunity.

Figures

Figure 1. Percentage of Students with All Required Immunizations by School Year, Kindergarten 2019-2020 to 2024-2025 and First Grade 2021-2022 to 2022-2023

Figure 2. Percentage of Kindergarten Students with Specific Required Immunizations by Series and School Year, 2019-2020 to 2024-2025

Figure 3. Percentage of Kindergarten Students with Permanent Medical Exemptions (PME) by School Type and by School Year, 2019-2020 to 2024-2025

Figure 4. Percentage of Kindergarten Students by Reported Admission Status by School Year, 2019-2020 to 2024-2025

Figure 5. Map: Kindergarten Students with All Required Immunizations, by School Year and County, 2023-2024 to 2024-2025

Figure 6. Map: Kindergarten Students with Two or More Doses of MMR Vaccine, by School Year and County, 2023-2024 to 2024-2025

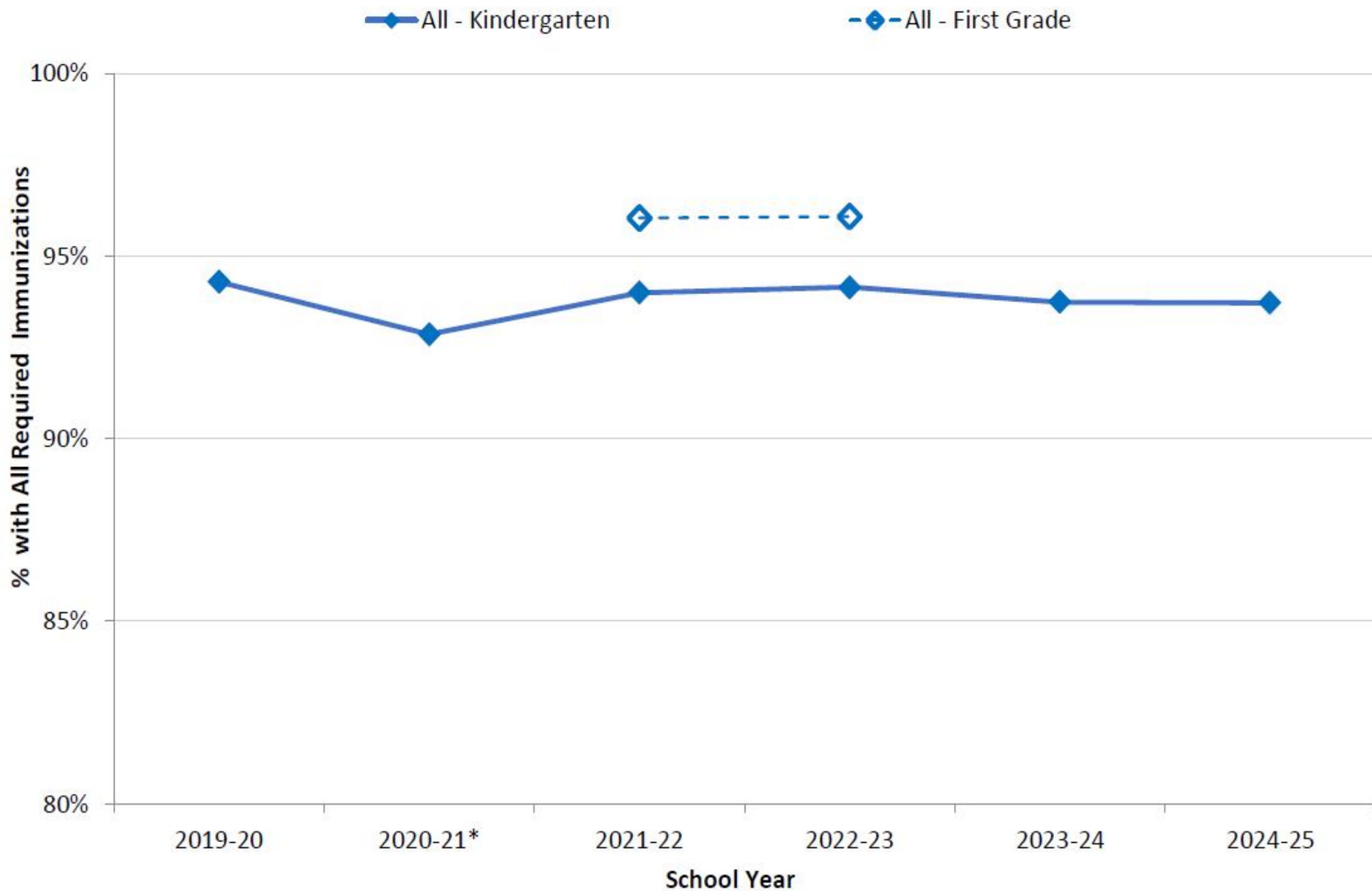
Tables

Table 1. Kindergarten Immunization Assessment Summary, 2022-2023 to 2024-2025 School Years

Table 2. Total Kindergarten Enrollment, Student Immunization Status, and Specific Required Immunizations by Series, 2024-2025, By County

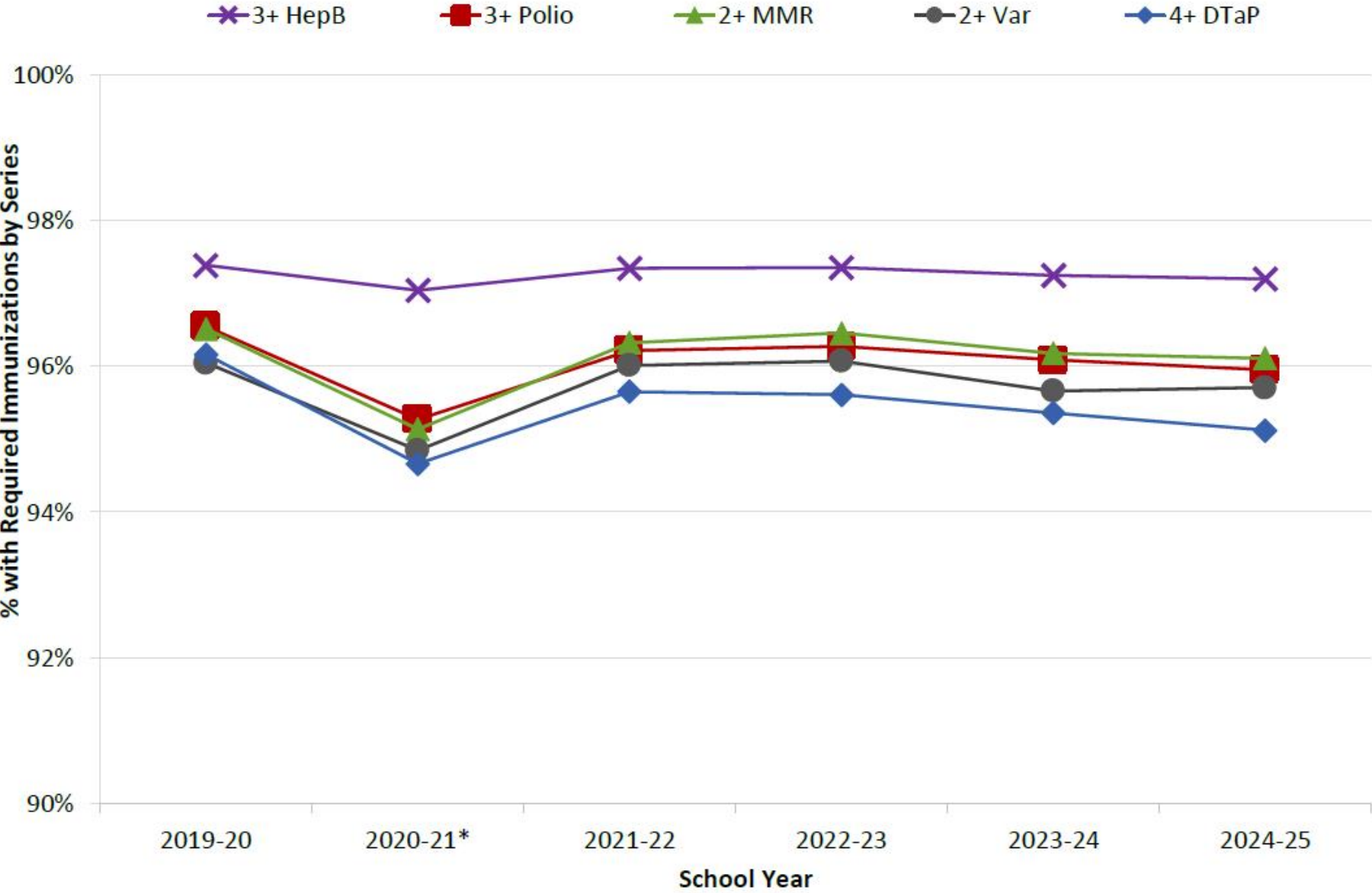
[Download Data](#)

Figure 1. Percentage of Students with All Required Immunizations by School Year, Kindergarten 2019-2020 to 2024-2025 and First Grade 2021-2022 to 2022-2023



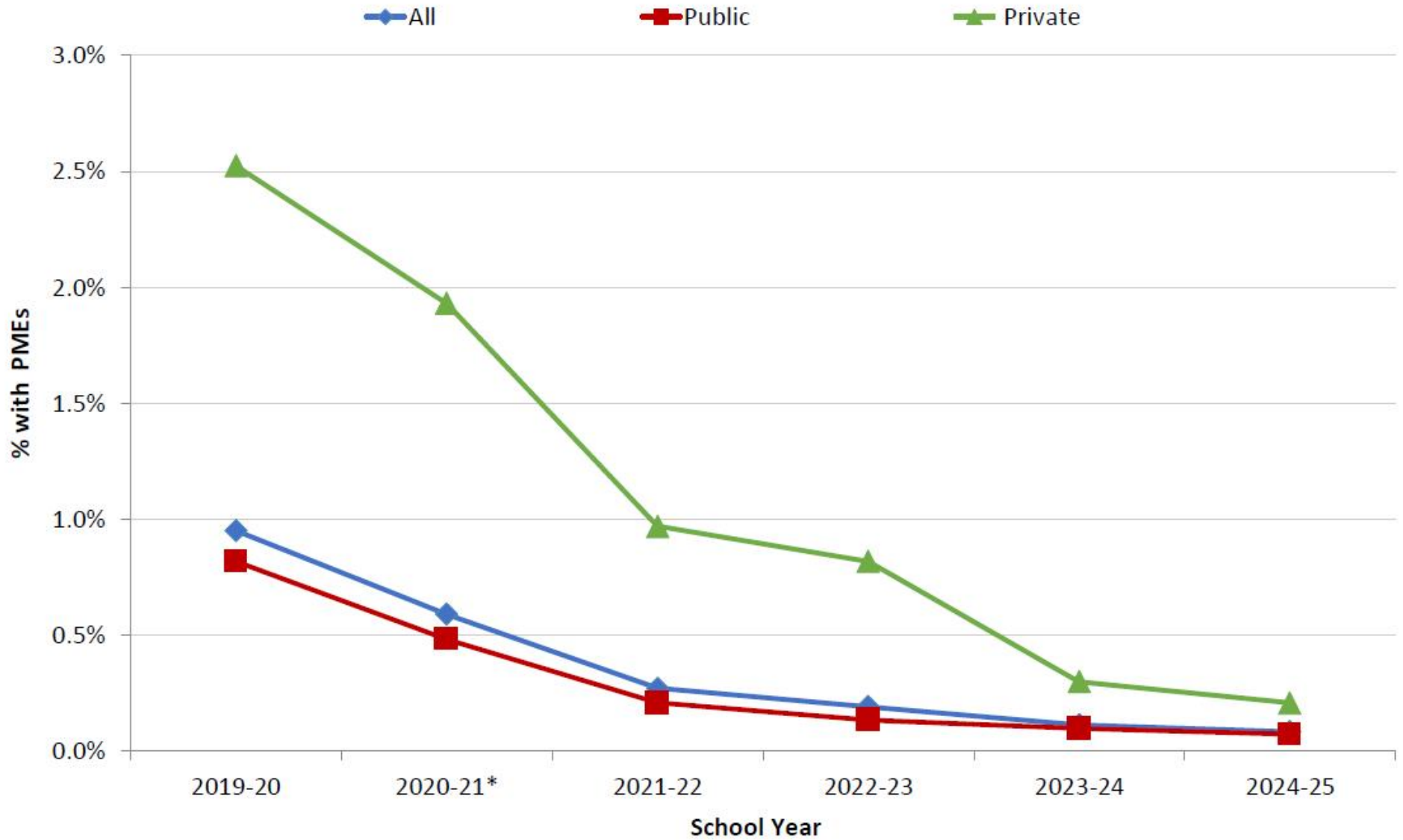
*School beginning during first year of COVID-19 pandemic.

Figure 2. Percentage of Kindergarten Students with Specific Required Immunizations by Series and School Year, 2019-2020 to 2024-2025



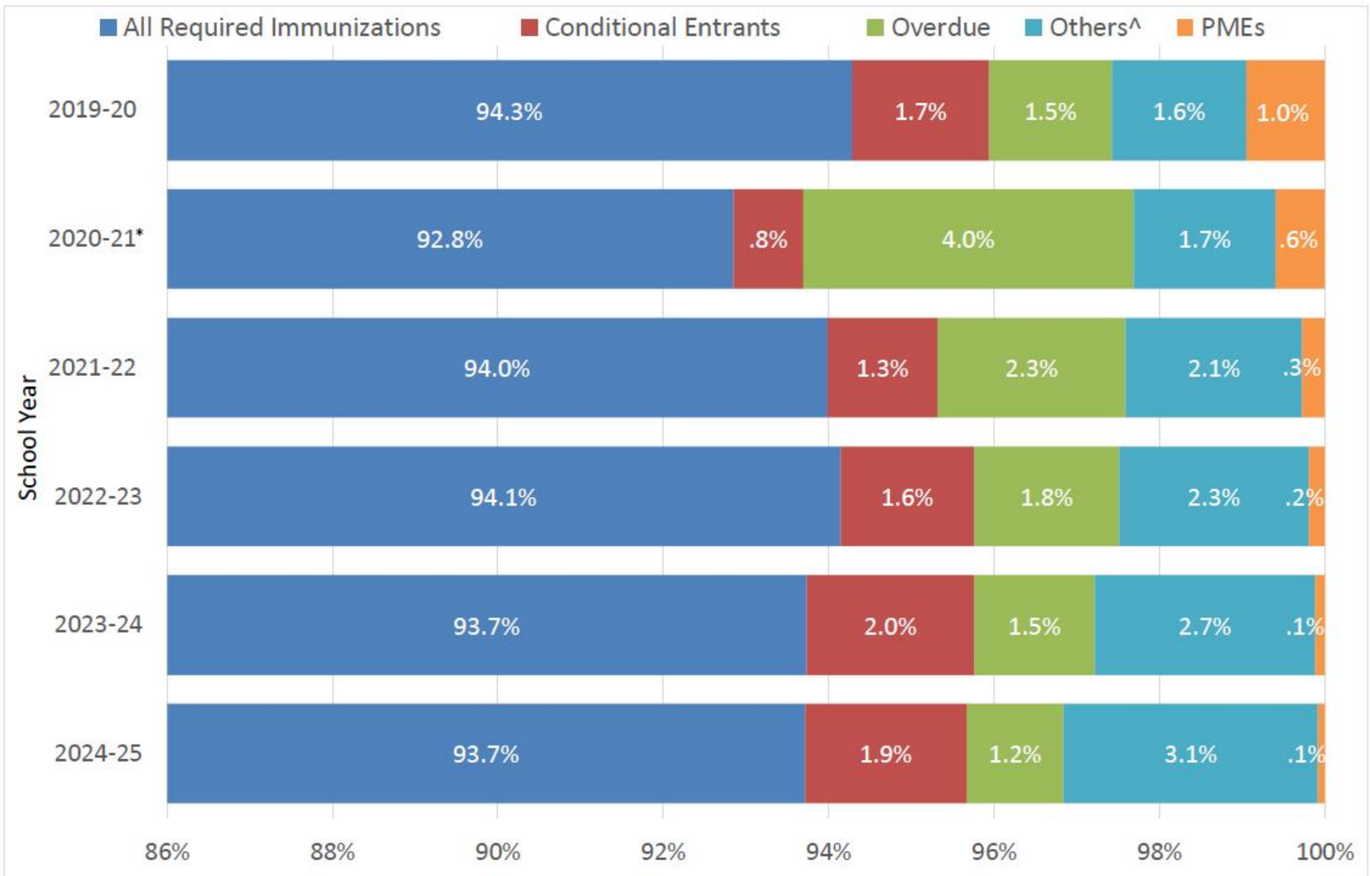
*School beginning during first year of COVID-19 pandemic.

Figure 3. Percentage of Kindergarten Students with Permanent Medical Exemptions (PME) by School Type and by School Year, 2019-2020 to 2024-2025



*School beginning during first year of COVID-19 pandemic.

Figure 4. Percentage of Kindergarten Students by Reported Admission Status by School Year, 2019-2020 to 2024-2025



^ Other children lacking required immunizations under criteria specified in SB 277.

*School beginning during first year of COVID-19 pandemic.

Figure 5. Kindergarten Students with All Required Immunizations, by School Year and County, 2023-2024 to 2024-2025

≤ 89.9% 90.0 – 94.9% 95.0 – 100%

Kindergarten
2023-2024 School Year



Kindergarten
2024-2025 School Year

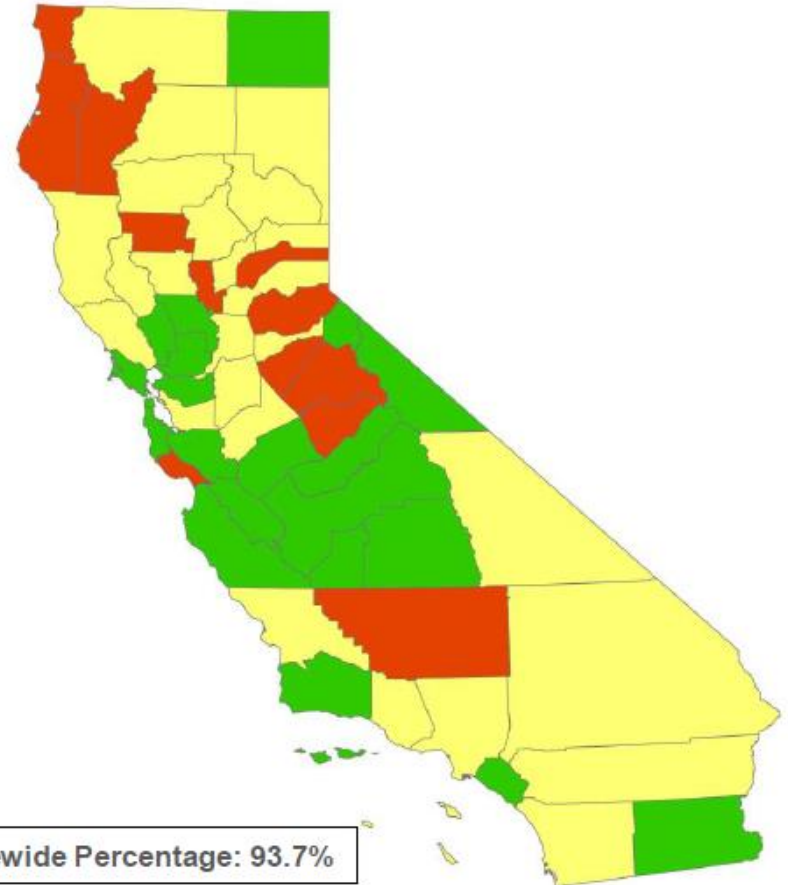


Figure 6. Kindergarten Students with Two or More Doses of MMR Vaccine, by School Year and County, 2023-2024 to 2024-2025

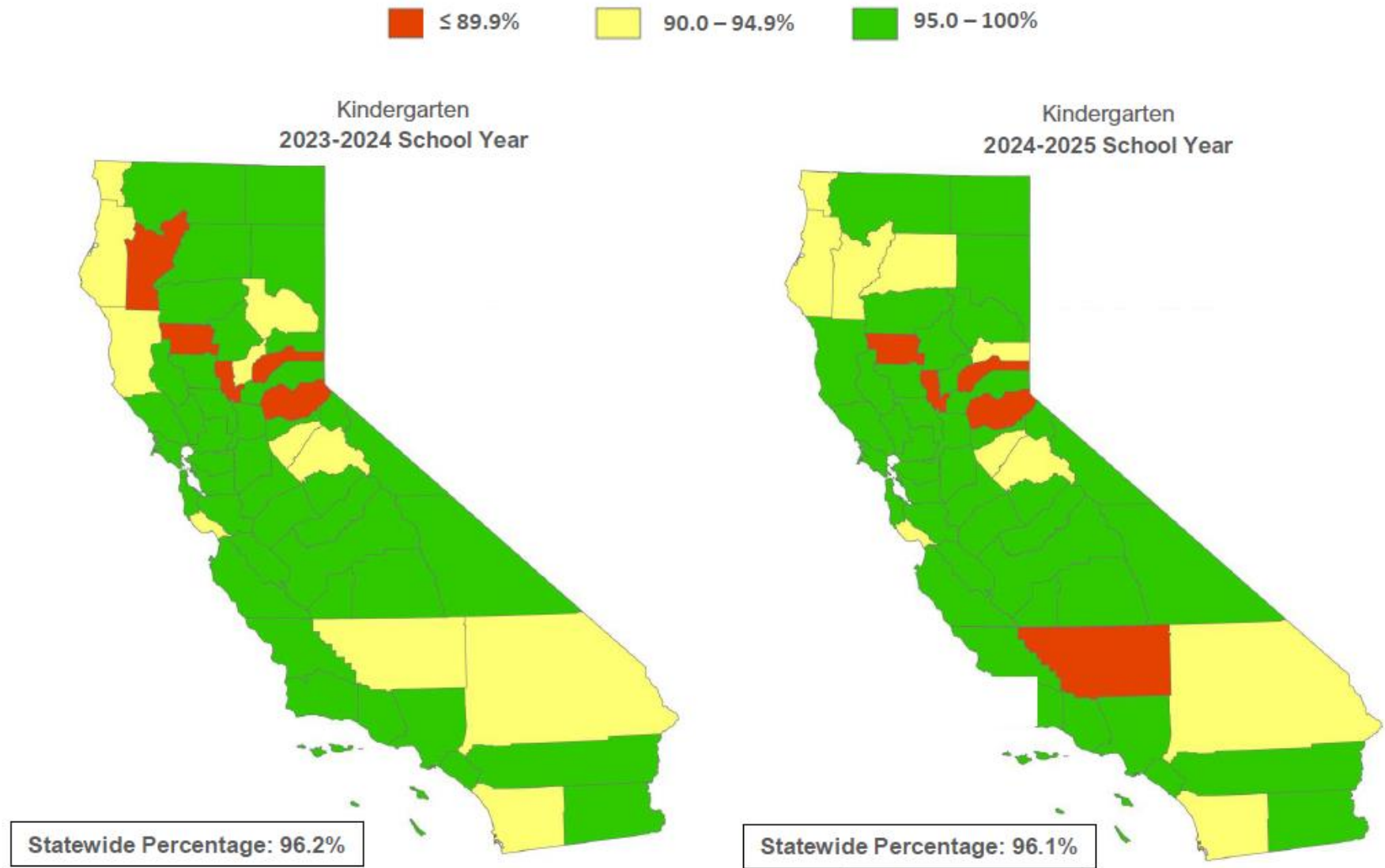


Table 1: Kindergarten Immunization Assessment Summary, 2022-2023 to 2024-2025 School Years

Categories	2024-25 All	2024-25 Public	2024-25 Private	2023-24 All	2023-24 Public	2023-24 Private	2022-23 All	2022-23 Public	2022-23 Private
Number of Schools Reporting Kindergarten Students	7,915	6,158	1,757	7,953	6,160	1,793	7,990	6,191	1,799
Number of Kindergarten Students	590,849	545,169	45,680	569,680	522,949	46,731	540,864	495,722	45,142
All Required Immunizations	93.7%	93.6%	94.6%	93.7%	93.7%	93.9%	94.1%	94.2%	93.4%
Conditional Entrants	1.9%	2.0%	1.8%	2.0%	2.0%	2.2%	1.6%	1.6%	1.8%
Permanent Medical Exemptions	0.1%	0.1%	0.2%	0.1%	0.1%	0.3%	0.2%	0.1%	0.8%
Personal Belief Exemptions	0.0%	0.0%	0.0%	0.0%	0.0%	0.0%	0.0%	0.0%	0.0%
Others Lacking Immunizations†	3.1%	3.2%	0.9%	2.7%	2.8%	0.9%	2.3%	2.4%	1.0%
Overdue^	1.2%	1.1%	2.4%	1.5%	1.3%	2.8%	1.8%	1.6%	2.9%
4+ DTaP	95.1%	95.0%	96.2%	95.4%	95.3%	96.0%	95.6%	95.6%	95.4%
3+ Polio	96.0%	95.9%	96.5%	96.1%	96.1%	96.0%	96.3%	96.3%	95.7%
2+ MMR	96.1%	96.1%	96.3%	96.2%	96.2%	95.8%	96.5%	96.6%	95.3%
3+ Hep B	97.2%	97.1%	97.8%	97.2%	97.2%	97.5%	97.3%	97.4%	97.2%
2+ Varicella	95.7%	95.7%	96.1%	95.7%	95.7%	95.7%	96.1%	96.2%	95.0%

† Other children lacking required immunizations under criteria specified in SB 277: includes students reported as attending independent study who do not receive classroom-based instruction or home-based private schools or receiving IEP services.

^ Overdue for one or more required immunizations.

Table 2: Total Kindergarten Enrollment and Student Immunization Status and Specific Required Immunizations by Series, 2024-2025, By County*

County	Total Students	All Required **	Condi-tional Entrants	PMEs^	Others†	Overdue ^^	DTP 4+	Polio 3+	MMR 2+	HepB 3+	Var 2+
State Total	590,849	93.7%	1.9%	0.1%	3.1%	1.2%	95.1%	96.0%	96.1%	97.2%	95.7%
Alameda	22,513	94.5%	1.8%	0.1%	0.9%	2.8%	96.4%	97.2%	97.1%	98.2%	96.5%
Alpine	8	N/A*	N/A*	N/A*	N/A*	N/A*	N/A*	N/A*	N/A*	N/A*	N/A*
Amador	406	91.6%	5.4%	0.2%	1.2%	1.5%	94.6%	96.3%	95.3%	97.0%	94.6%
Butte	3,139	93.5%	3.3%	0.0%	2.4%	0.7%	94.7%	96.2%	96.6%	97.6%	96.3%
Calaveras	545	89.4%	3.3%	0.2%	5.9%	1.3%	91.9%	94.5%	94.9%	95.4%	94.7%
Colusa	419	94.3%	1.9%	0.0%	0.0%	3.8%	96.2%	96.7%	96.2%	98.6%	95.7%
Contra Costa	17,372	95.6%	1.8%	0.2%	1.0%	1.4%	97.1%	97.7%	97.9%	98.6%	97.5%
Del Norte	361	89.5%	1.9%	0.3%	4.2%	4.2%	92.5%	93.4%	93.1%	95.0%	92.0%
El Dorado	3,262	74.2%	1.3%	0.0%	23.9%	0.6%	76.0%	76.4%	76.6%	77.7%	76.4%
Fresno	20,036	95.8%	1.1%	0.1%	2.4%	0.6%	96.7%	97.3%	97.4%	98.1%	97.2%
Glenn	702	80.9%	1.0%	0.4%	16.7%	1.0%	85.5%	84.9%	84.5%	86.5%	84.3%
Humboldt	1,882	88.4%	2.8%	0.2%	3.5%	5.2%	92.0%	92.8%	93.4%	94.0%	92.8%
Imperial	3,103	97.6%	1.2%	0.0%	0.4%	0.8%	98.2%	99.2%	99.1%	99.5%	99.4%
Inyo	217	92.2%	2.8%	0.5%	0.0%	4.6%	93.5%	93.1%	98.2%	98.6%	97.7%

Table 2: Total Kindergarten Enrollment and Student Immunization Status and Specific Required Immunizations by Series, 2024-2025, By County*

County	Total Students	All Required **	Condi-tional Entrants	PMEs^	Others†	Overdue ^^	DTP 4+	Polio 3+	MMR 2+	HepB 3+	Var 2+
State Total	590,849	93.7%	1.9%	0.1%	3.1%	1.2%	95.1%	96.0%	96.1%	97.2%	95.7%
Kern	19,728	85.4%	3.3%	0.1%	10.3%	1.0%	87.3%	88.9%	89.3%	91.7%	88.8%
Kings	2,880	96.0%	2.1%	0.0%	1.4%	0.5%	96.5%	97.6%	97.9%	98.4%	97.6%
Lake	1,071	93.8%	3.8%	0.0%	0.8%	1.5%	95.7%	97.1%	97.8%	98.2%	96.6%
Lassen	388	91.5%	4.6%	0.0%	2.8%	1.0%	92.8%	93.0%	95.1%	95.9%	94.8%
Los Angeles	131,001	94.9%	2.0%	0.1%	1.6%	1.4%	96.4%	97.1%	97.4%	98.3%	96.9%
Madera	3,035	95.6%	1.5%	0.0%	2.0%	0.8%	96.9%	97.4%	97.7%	98.5%	97.4%
Marin	3,417	97.1%	1.6%	0.1%	0.4%	0.7%	98.4%	99.0%	99.0%	99.2%	98.6%
Mariposa	183	89.1%	6.6%	0.0%	2.7%	1.6%	90.7%	94.5%	98.4%	96.2%	98.4%
Mendocino	1,279	92.7%	3.3%	0.1%	1.2%	2.8%	95.3%	95.9%	96.4%	96.5%	95.4%
Merced	5,683	95.7%	2.1%	0.1%	1.2%	1.0%	97.0%	98.1%	97.9%	98.9%	97.7%
Modoc	104	97.1%	2.9%	0.0%	0.0%	0.0%	97.1%	≥99.0%	≥99.0%	≥99.0%	≥99.0%
Mono	106	98.1%	1.9%	0.0%	0.0%	0.0%	≥99.0%	98.1%	≥99.0%	98.1%	≥99.0%
Monterey	6,730	96.7%	1.1%	0.0%	0.4%	1.8%	98.0%	98.5%	98.2%	98.9%	97.8%
Napa	1,964	96.0%	1.3%	0.0%	1.9%	0.8%	96.7%	97.0%	97.4%	97.4%	96.8%

Table 2: Total Kindergarten Enrollment and Student Immunization Status and Specific Required Immunizations by Series, 2024-2025, By County*

County	Total Students	All Required **	Condi-tional Entrants	PMEs^	Others†	Overdue ^^	DTP 4+	Polio 3+	MMR 2+	HepB 3+	Var 2+
State Total	590,849	93.7%	1.9%	0.1%	3.1%	1.2%	95.1%	96.0%	96.1%	97.2%	95.7%
Nevada	1,074	83.1%	5.1%	0.1%	11.1%	0.6%	86.6%	86.9%	87.3%	88.6%	87.5%
Orange	44,707	96.0%	1.4%	0.1%	1.9%	0.6%	97.3%	97.8%	97.8%	98.6%	97.5%
Placer	7,598	93.6%	2.6%	0.1%	2.8%	0.9%	94.8%	95.9%	96.1%	96.9%	95.7%
Plumas	197	91.9%	4.6%	0.0%	3.6%	0.0%	92.4%	94.4%	95.4%	98.0%	95.4%
Riverside	40,871	92.8%	2.3%	0.1%	3.9%	0.9%	94.1%	95.3%	95.3%	96.7%	95.0%
Sacramento	24,766	92.8%	3.1%	0.2%	2.8%	1.1%	94.4%	95.6%	96.3%	97.2%	95.7%
San Benito	1,220	96.9%	2.5%	0.2%	0.1%	0.3%	98.1%	98.8%	98.9%	99.5%	98.5%
San Bernardino	37,248	90.9%	2.6%	0.1%	5.1%	1.3%	92.2%	93.5%	93.7%	94.9%	93.5%
San Diego	51,095	91.5%	1.8%	0.1%	6.2%	0.4%	92.8%	93.7%	93.7%	95.6%	93.4%
San Francisco	6,621	96.2%	0.5%	0.0%	0.2%	3.1%	97.8%	97.7%	98.1%	98.4%	97.6%
San Joaquin	14,530	93.8%	1.7%	0.0%	3.0%	1.4%	94.9%	96.0%	96.0%	97.1%	95.5%
San Luis Obispo	3,369	94.9%	2.3%	0.2%	1.1%	1.6%	96.6%	97.4%	97.3%	98.1%	96.8%
San Mateo	9,414	95.8%	0.8%	0.0%	0.7%	2.8%	97.4%	98.1%	97.6%	98.5%	97.1%
Santa Barbara	7,751	97.2%	1.3%	0.1%	1.2%	0.2%	98.0%	98.6%	98.5%	98.8%	98.1%

Table 2: Total Kindergarten Enrollment and Student Immunization Status and Specific Required Immunizations by Series, 2024-2025, By County*

County	Total Students	All Required **	Condi-tional Entrants	PMEs^	Others†	Overdue ^^	DTP 4+	Polio 3+	MMR 2+	HepB 3+	Var 2+
State Total	590,849	93.7%	1.9%	0.1%	3.1%	1.2%	95.1%	96.0%	96.1%	97.2%	95.7%
Santa Clara	26,649	97.5%	1.1%	0.1%	0.3%	1.0%	98.6%	99.1%	99.0%	99.3%	98.6%
Santa Cruz	3,873	89.5%	1.1%	0.2%	8.6%	0.6%	90.8%	91.5%	91.1%	94.2%	90.9%
Shasta	2,770	91.0%	3.4%	0.0%	4.2%	1.4%	92.7 %	94.2%	94.4%	96.5%	93.8%
Sierra	58	93.1%	6.9%	0.0%	0.0%	0.0%	≥98.0%	≥98.0%	94.8%	≥98.0%	94.8%
Siskiyou	607	94.7%	3.3%	0.0%	1.6%	0.3%	96.7%	96.9%	96.9%	96.9%	96.7%
Solano	5,925	95.7%	2.3%	0.1%	0.9%	1.0%	96.9%	98.0%	98.5%	98.7%	97.9%
Sonoma	7,154	94.2%	1.6%	0.0%	3.1%	1.1%	95.4%	95.9%	96.1%	96.6%	95.6%
Stanislaus	10,111	92.8%	2.3%	0.0%	3.4%	1.4%	94.3%	95.4%	95.6%	97.3%	95.2%
Sutter	2,695	70.4%	2.0%	0.2%	26.7%	0.8%	76.3%	77.7%	77.2%	82.6%	76.6%
Tehama	1,127	94.4%	2.7%	0.2%	1.8%	1.0%	96.2%	96.9%	97.5%	98.7%	97.0%
Trinity	135	83.0%	5.2%	0.0%	1.5%	10.4%	88.9%	90.4%	90.4%	90.4%	89.6%
Tulare	10,483	96.1%	1.2%	0.0%	2.2%	0.5%	96.7%	97.1%	97.5%	98.3%	97.2%
Tuolumne	633	87.4%	1.9%	0.2%	3.5%	7.1%	89.9%	90.7%	90.0%	94.8%	89.9%
Ventura	12,419	94.1%	1.9%	0.1%	2.5%	1.4%	95.5%	96.3%	96.4%	97.6%	96.1%

Table 2: Total Kindergarten Enrollment and Student Immunization Status and Specific Required Immunizations by Series, 2024-2025, By County*

County	Total Students	All Required**	Condi-tional Entrants	PMEs^	Others†	Overdue ^^	DTP 4+	Polio 3+	MMR 2+	HepB 3+	Var 2+
State Total	590,849	93.7%	1.9%	0.1%	3.1%	1.2%	95.1%	96.0%	96.1%	97.2%	95.7%
Yolo	2,851	95.4%	2.3%	0.1%	2.0%	0.2%	96.3%	96.7%	97.7%	97.7%	97.1%
Yuba	1,364	93.8%	1.3%	0.0%	3.1%	1.8%	95.1%	95.8%	96.1%	97.7%	95.6%

* Additional precautions for student de-identification are based on jurisdiction enrollment for kindergarten. For jurisdictions with: Fewer than 20 enrollees, the data are omitted; 20-49 enrollees, values of 95% or higher are listed as ≥95%; 50-99 enrollees, values of 98% or higher are listed as ≥98%; 100-499 enrollees, values of 99% or higher are listed as ≥99%.

** Students who have received all required immunizations.

^ Students who have a permanent medical exemption.

† Other children lacking required immunizations under criteria specified in SB 277: includes students reported as attending independent study who do not receive classroom-based instruction or home-based private schools or receiving IEP services.

^^ Overdue for one or more required immunizations.