









## Influenza Vaccination (Short Stay)

Figure 3 shows the rate distribution for the Influenza Vaccination (Short Stay) measure for all four quarters and the aggregate, in 5-percent intervals. Each interval includes all facilities whose score is above the lower interval and at or below the higher interval. Note that for the Influenza Vaccination (Short Stay) measure, a higher rate indicates better performance.

**Figure 3—Influenza Vaccination (Short Stay)**

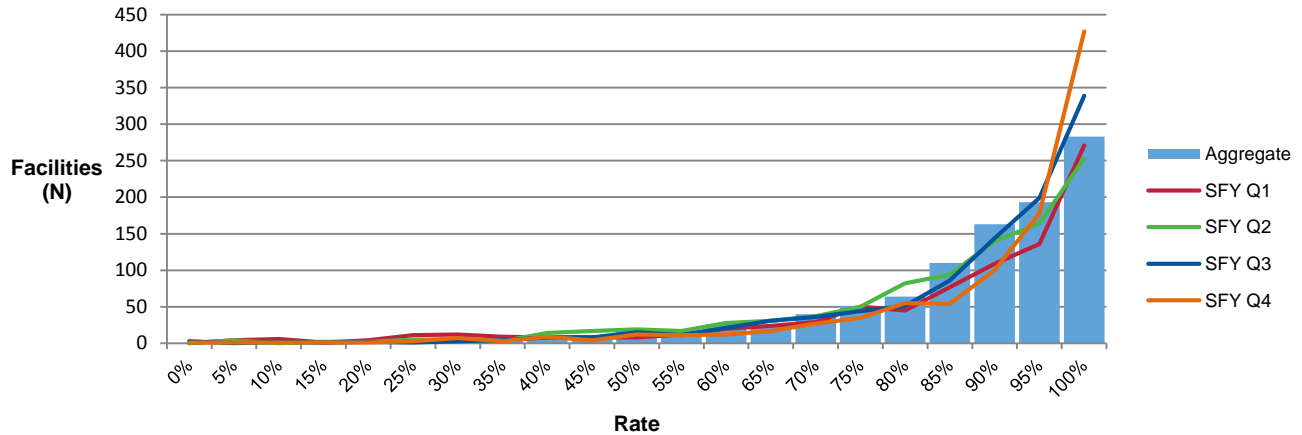


Table 4 shows the number of facilities evaluated, percentile distribution, mean, minimum, and maximum rate for the Influenza Vaccination (Short Stay) measure.

**Table 4—Influenza Vaccination (Short Stay)**

Performance Period	Number of Facilities	10th Percentile	25th Percentile	50th Percentile	75th Percentile	90th Percentile	Mean	Minimum Rate	Maximum Rate
SFY Q1	844	55.814%	76.316%	89.443%	96.774%	99.457%	82.455%	3.030%	100.00%
SFY Q2	967	57.658%	75.745%	87.692%	95.402%	99.029%	82.308%	2.326%	100.00%
SFY Q3	1,009	63.889%	80.952%	91.045%	96.610%	99.405%	85.648%	0.000%	100.00%
SFY Q4	959	67.925%	83.495%	93.846%	98.413%	100.00%	87.879%	0.000%	100.00%
Aggregate	1,023	61.871%	78.519%	89.112%	95.732%	98.667%	84.190%	1.681%	100.00%

Note: The selection of facilities included in the final aggregate benchmarks that include all 4 quarters may differ from the benchmarks for individual quarters as facilities that did not meet the minimum denominator threshold for an individual quarter might meet or exceed the threshold when multiple quarters are combined.

## Pneumococcal Vaccination (Short Stay)

Figure 4 shows the rate distribution for the Pneumococcal Vaccination (Short Stay) measure for all four quarters and the aggregate, in 5-percent intervals. Each interval includes all facilities whose score is above the lower interval and at or below the higher interval. Note that for the Pneumococcal Vaccination (Short Stay) measure, a higher rate indicates better performance.

**Figure 4—Pneumococcal Vaccination (Short Stay)**

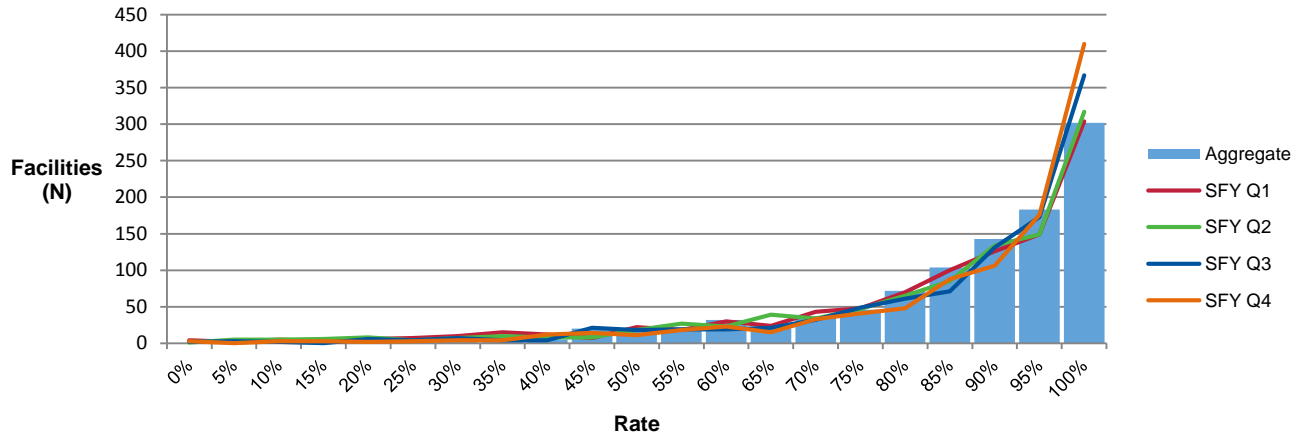


Table 5 shows the number of facilities evaluated, percentile distribution, mean, minimum, and maximum rate for the Pneumococcal Vaccination (Short Stay) measure.

**Table 5—Pneumococcal Vaccination (Short Stay)**

Performance Period	Number of Facilities	10th Percentile	25th Percentile	50th Percentile	75th Percentile	90th Percentile	Mean	Minimum Rate	Maximum Rate
SFY Q1	1,005	52.128%	75.000%	88.119%	96.364%	99.451%	81.509%	0.000%	100.00%
SFY Q2	1,000	53.887%	75.119%	88.889%	96.637%	99.319%	82.035%	0.000%	100.00%
SFY Q3	1,014	58.333%	78.788%	90.887%	97.391%	99.795%	84.608%	0.000%	100.00%
SFY Q4	1,017	61.029%	81.250%	92.174%	97.917%	100.00%	85.879%	0.000%	100.00%
Aggregate	1,044	55.000%	76.923%	88.753%	96.179%	99.044%	82.709%	1.807%	100.00%

Note: The selection of facilities included in the final aggregate benchmarks that include all 4 quarters may differ from the benchmarks for individual quarters as facilities that did not meet the minimum denominator threshold for an individual quarter might meet or exceed the threshold when multiple quarters are combined.

## Urinary Tract Infection (Long Stay)

Figure 5 shows the rate distribution for the Urinary Tract Infection (Long Stay) measure for all four quarters and the aggregate, in 5-percent intervals. Each interval includes all facilities whose score is at or above the lower interval and less than the higher interval. Note that for the Urinary Tract Infection (Long Stay) measure, a lower rate indicates better performance.

**Figure 5—Urinary Tract Infection (Long Stay)**

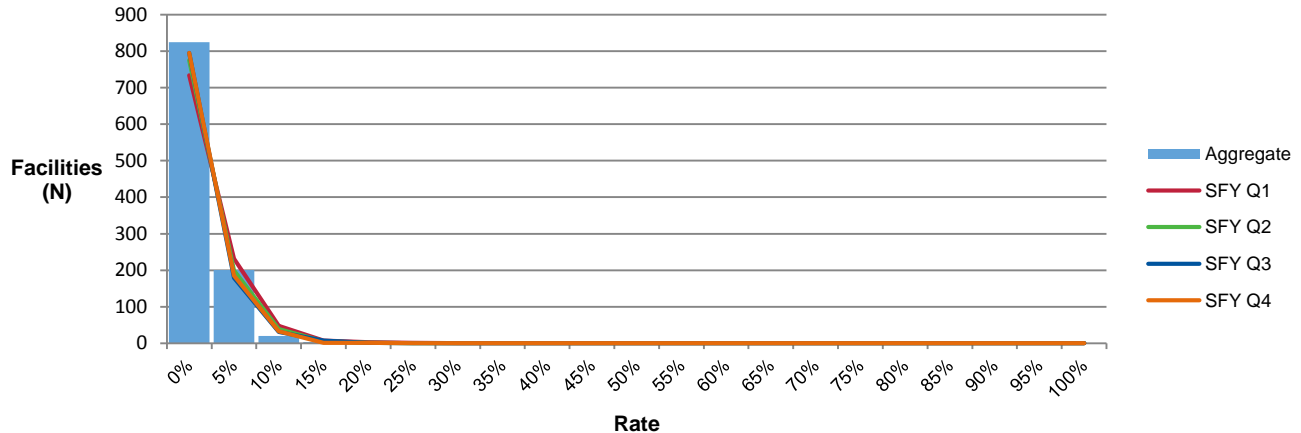


Table 6 shows the number of facilities evaluated, percentile distribution, mean, minimum, and maximum rate for the Urinary Tract Infection (Long Stay) measure.

**Table 6—Urinary Tract Infection (Long Stay)**

Performance Period	Number of Facilities	10th Percentile	25th Percentile	50th Percentile	75th Percentile	90th Percentile	Mean	Minimum Rate	Maximum Rate
SFY Q1	1,025	8.247%	5.405%	2.667%	0.820%	0.000%	3.572%	0.000%	26.667%
SFY Q2	1,020	8.054%	4.791%	2.326%	0.000%	0.000%	3.164%	0.000%	20.968%
SFY Q3	1,013	6.977%	4.545%	2.326%	0.000%	0.000%	3.006%	0.000%	23.288%
SFY Q4	1,015	6.977%	4.545%	2.000%	0.000%	0.000%	2.810%	0.000%	21.212%
Aggregate	1,049	6.818%	4.485%	2.525%	1.135%	0.330%	3.152%	0.000%	19.266%

Note: The selection of facilities included in the final aggregate benchmarks that include all 4 quarters may differ from the benchmarks for individual quarters as facilities that did not meet the minimum denominator threshold for an individual quarter might meet or exceed the threshold when multiple quarters are combined.

## Loss of Bowel or Bladder Control (Long Stay)

Figure 6 shows the rate distribution for the Loss of Bowel or Bladder Control (Long Stay) measure for all four quarters and the aggregate, in 5-percent intervals. Each interval includes all facilities whose score is at or above the lower interval and less than the higher interval. Note that for the Loss of Bowel or Bladder Control (Long Stay) measure, a lower rate indicates better performance.

**Figure 6—Loss of Bowel or Bladder Control (Long Stay)**

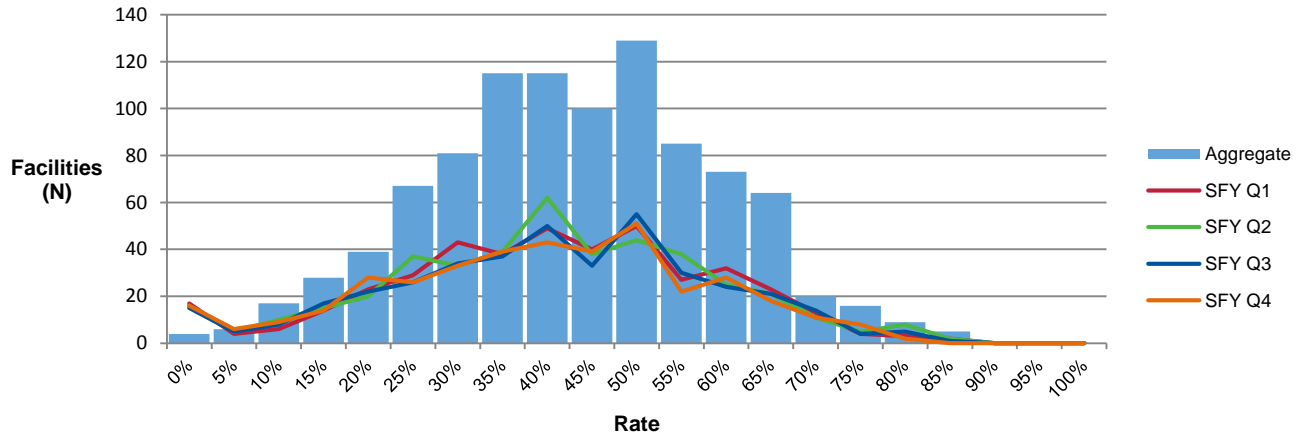


Table 7 shows the number of facilities evaluated, percentile distribution, mean, minimum, and maximum rate for the Loss of Bowel or Bladder Control (Long Stay) measure.

**Table 7—Loss of Bowel or Bladder Control (Long Stay)**

Performance Period	Number of Facilities	10th Percentile	25th Percentile	50th Percentile	75th Percentile	90th Percentile	Mean	Minimum Rate	Maximum Rate
SFY Q1	417	65.909%	54.839%	43.243%	31.707%	20.000%	42.648%	0.000%	87.179%
SFY Q2	429	66.667%	55.556%	42.857%	30.303%	19.318%	42.686%	0.000%	86.667%
SFY Q3	401	65.625%	54.839%	43.333%	31.250%	18.750%	42.622%	0.000%	88.571%
SFY Q4	393	64.865%	53.846%	43.333%	29.730%	17.647%	41.730%	0.000%	84.848%
Aggregate	975	66.327%	57.143%	45.695%	35.052%	25.316%	45.802%	0.000%	97.143%

Note: The selection of facilities included in the final aggregate benchmarks that include all 4 quarters may differ from the benchmarks for individual quarters as facilities that did not meet the minimum denominator threshold for an individual quarter might meet or exceed the threshold when multiple quarters are combined.



## Self-Report Moderate to Severe Pain (Short Stay)

Figure 7 shows the rate distribution for the Self-Report Moderate to Severe Pain (Short Stay) measure for all four quarters and the aggregate, in 5-percent intervals. Each interval includes all facilities whose score is at or above the lower interval and less than the higher interval. Note that for the Self-Report Moderate to Severe Pain (Short Stay) measure, a lower rate indicates better performance.

**Figure 7—Self-Report Moderate to Severe Pain (Short Stay)**

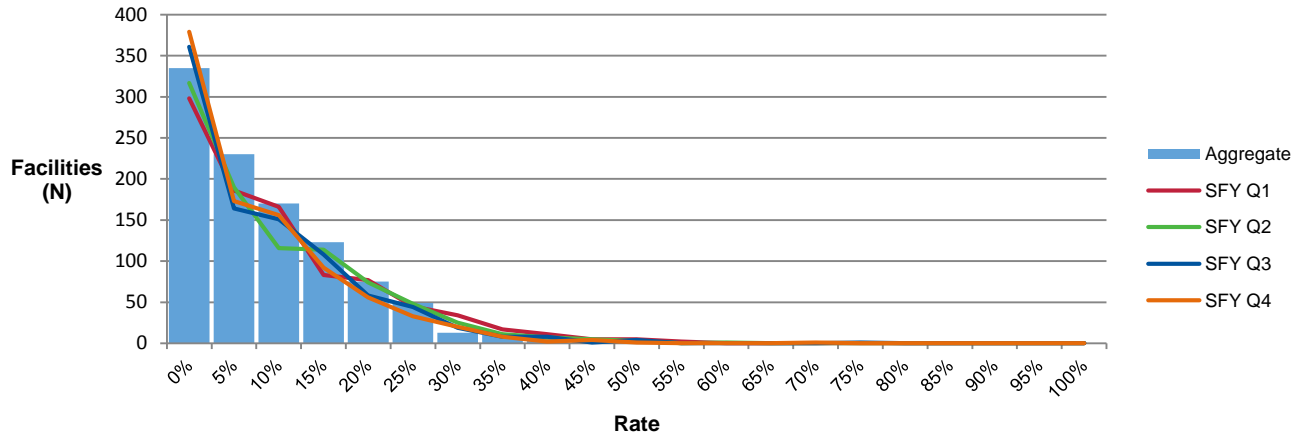


Table 8 shows the number of facilities evaluated, percentile distribution, mean, minimum, and maximum rate for the Self-Report Moderate to Severe Pain (Short Stay) measure.

**Table 8—Self-Report Moderate to Severe Pain (Short Stay)**

Performance Period	Number of Facilities	10th Percentile	25th Percentile	50th Percentile	75th Percentile	90th Percentile	Mean	Minimum Rate	Maximum Rate
SFY Q1	929	27.143%	17.333%	9.412%	3.529%	0.339%	12.015%	0.000%	59.375%
SFY Q2	911	25.131%	17.436%	8.738%	3.077%	0.000%	11.289%	0.000%	63.846%
SFY Q3	927	24.138%	15.686%	8.058%	2.439%	0.000%	10.413%	0.000%	75.000%
SFY Q4	925	22.222%	14.433%	7.097%	1.967%	0.000%	9.543%	0.000%	71.134%
Aggregate	1,017	23.699%	15.719%	8.553%	3.595%	0.909%	10.741%	0.000%	51.515%

Note: The selection of facilities included in the final aggregate benchmarks that include all 4 quarters may differ from the benchmarks for individual quarters as facilities that did not meet the minimum denominator threshold for an individual quarter might meet or exceed the threshold when multiple quarters are combined.

## Self-Report Moderate to Severe Pain (Long Stay)

Figure 8 shows the rate distribution for the Self-Report Moderate to Severe Pain (Long Stay) measure for all four quarters and the aggregate, in 5-percent intervals. Each interval includes all facilities whose score is at or above the lower interval and less than the higher interval. Note that for the Self-Report Moderate to Severe Pain (Long Stay) measure, a lower rate indicates better performance.

**Figure 8—Self-Report Moderate to Severe Pain (Long Stay)**

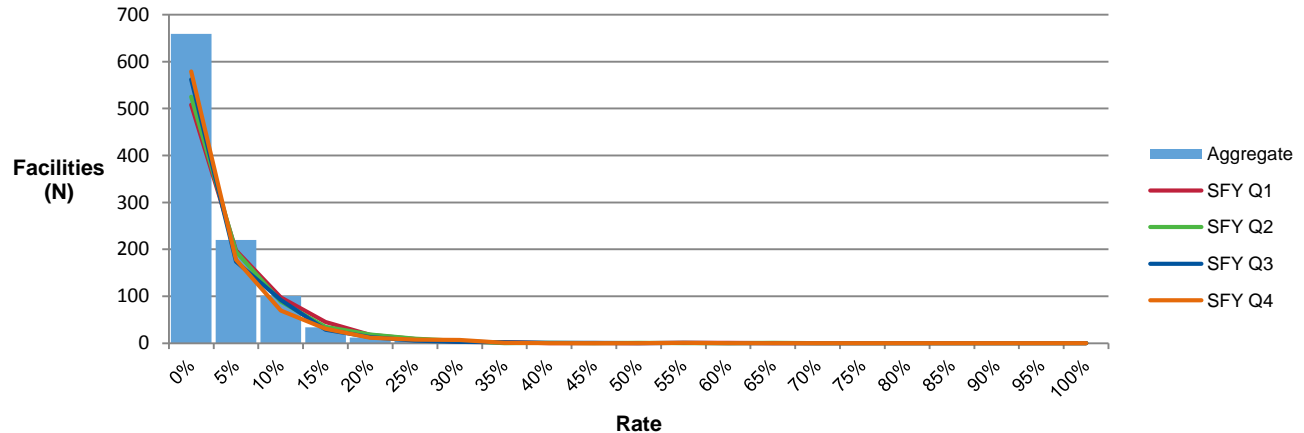


Table 9 shows the number of facilities evaluated, percentile distribution, mean, minimum, and maximum rate for the Self-Report Moderate to Severe Pain (Long Stay) measure.

**Table 9—Self-Report Moderate to Severe Pain (Long Stay)**

Performance Period	Number of Facilities	10th Percentile	25th Percentile	50th Percentile	75th Percentile	90th Percentile	Mean	Minimum Rate	Maximum Rate
SFY Q1	883	14.433%	8.511%	3.704%	0.901%	0.000%	5.815%	0.000%	62.162%
SFY Q2	881	13.514%	7.843%	3.333%	0.000%	0.000%	5.417%	0.000%	69.444%
SFY Q3	884	12.766%	6.857%	2.985%	0.000%	0.000%	4.939%	0.000%	57.895%
SFY Q4	887	12.500%	6.667%	2.703%	0.000%	0.000%	4.727%	0.000%	55.000%
Aggregate	1,037	12.174%	7.429%	3.425%	0.917%	0.000%	5.064%	0.000%	52.273%

Note: The selection of facilities included in the final aggregate benchmarks that include all 4 quarters may differ from the benchmarks for individual quarters as facilities that did not meet the minimum denominator threshold for an individual quarter might meet or exceed the threshold when multiple quarters are combined.

## Increased Need for Help with Activities of Daily Living (Long Stay)

Figure 9 shows the rate distribution for the Increased Need for Help with Activities of Daily Living (ADL) (Long Stay) measure for all four quarters and the aggregate, in 5-percent intervals. Each interval includes all facilities whose score is at or above the lower interval and less than the higher interval. Note that for the Increased Need for Help with ADL (Long Stay) measure, a lower rate indicates better performance.

**Figure 9—Increased Need for Help with ADL (Long Stay)**

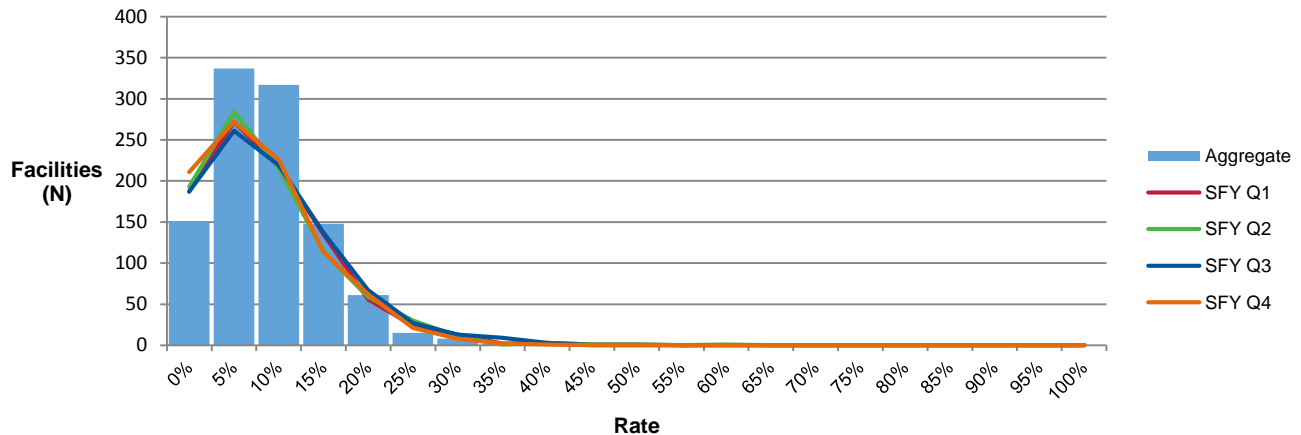


Table 10 shows the number of facilities evaluated, percentile distribution, mean, minimum, and maximum rate for the Increased Need for Help with ADL (Long Stay) measure.

**Table 10—Increased Need for Help with ADL (Long Stay)**

Performance Period	Number of Facilities	10th Percentile	25th Percentile	50th Percentile	75th Percentile	90th Percentile	Mean	Minimum Rate	Maximum Rate
SFY Q1	912	20.635%	15.152%	9.848%	5.792%	2.564%	11.007%	0.000%	54.286%
SFY Q2	913	20.588%	14.815%	9.375%	5.600%	2.778%	10.874%	0.000%	62.162%
SFY Q3	923	21.429%	15.789%	10.156%	6.000%	2.703%	11.427%	0.000%	44.444%
SFY Q4	916	20.000%	14.445%	9.354%	5.357%	2.439%	10.440%	0.000%	41.935%
Aggregate	1,039	19.322%	14.355%	10.406%	6.615%	4.167%	11.146%	0.000%	37.063%

Note: The selection of facilities included in the final aggregate benchmarks that include all 4 quarters may differ from the benchmarks for individual quarters as facilities that did not meet the minimum denominator threshold for an individual quarter might meet or exceed the threshold when multiple quarters are combined.

### 30-Day SNF Rehospitalization Measure

Figure 10 shows the rate distribution for the 30-day SNF Rehospitalization measure for SFY 2015-2016 in 5-percent intervals. Each interval includes all facilities whose score is at or above the lower interval and less than the higher interval. Note that for the 30-day SNF re-hospitalization measure, a lower rate indicates better performance. This measure is only calculated on an annual basis, and the results are limited to facilities included in the SFY 2015-2016 Annual Report.

**Figure 10—30-Day SNF Rehospitalization**

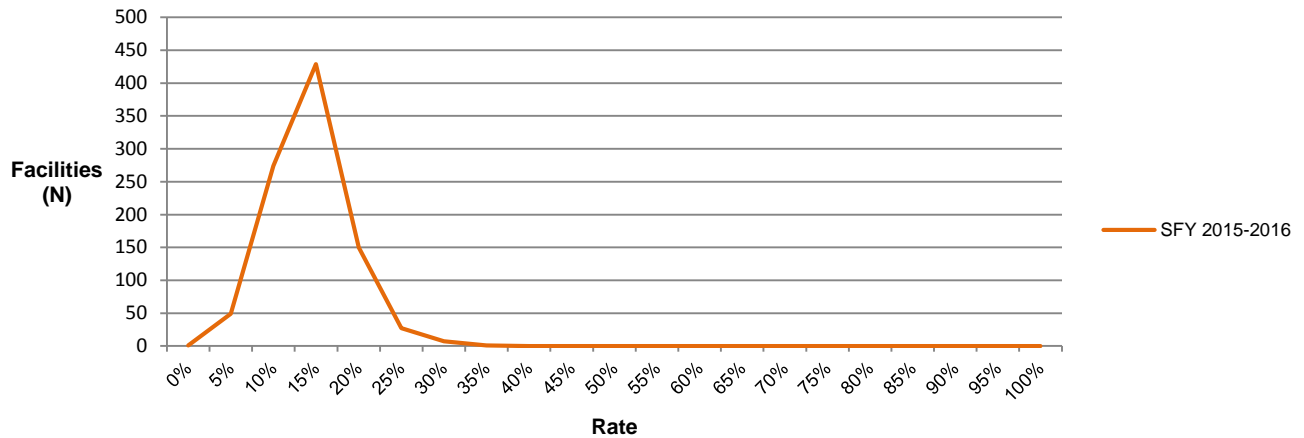


Table 11 shows the number of facilities evaluated, percentile distribution, mean, minimum, and maximum rate for the 30-day SNF Rehospitalization measure for SFY 2015-2016.

**Table 11—30-Day SNF Rehospitalization**

Performance Period	Number of Facilities	10th Percentile	25th Percentile	50th Percentile	75th Percentile	90th Percentile	Mean	Minimum Rate	Maximum Rate
SFY Q1 - Q4	938	22.182%	19.302%	16.428%	13.933%	11.162%	16.683%	4.888%	35.332%

## Staff Retention Measure

Figure 11 shows the rate distribution for the Staff Retention measure for SFY 2015-2016 in 5-percent intervals. Each interval includes all facilities whose score is above the lower interval and at or below the higher interval. Note that for the staff retention measure, a higher rate indicates better performance. This measure is only calculated on an annual basis, and the results are limited to facilities included in the SFY 2015-2016 Annual Report.

**Figure 11—Staff Retention**

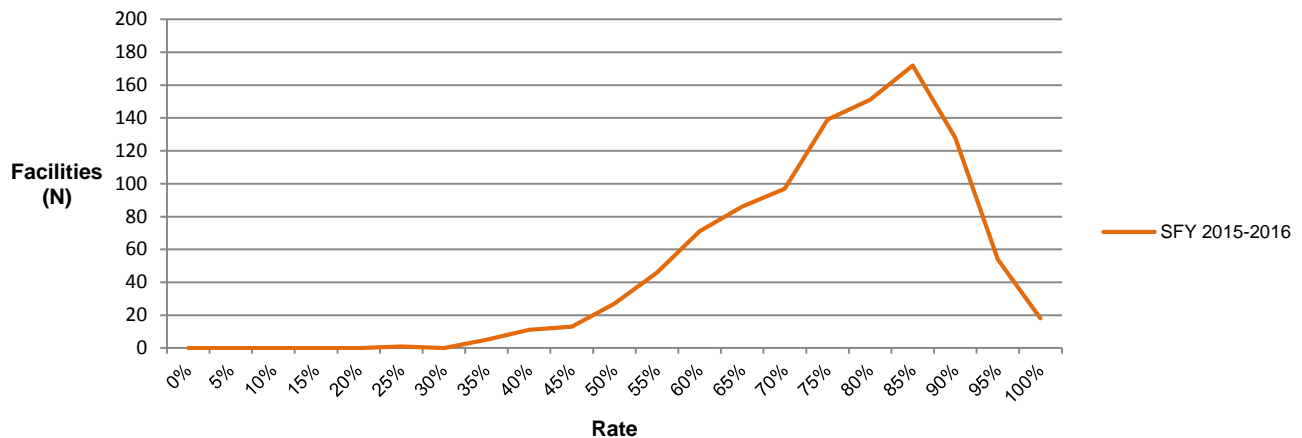


Table 12 shows the number of facilities evaluated, percentile distribution, mean, minimum, and maximum rate for the Staff Retention measure for SFY 2015-2016.

**Table 12—Staff Retention**

Performance Period	Number of Facilities	10th Percentile	25th Percentile	50th Percentile	75th Percentile	90th Percentile	Mean	Minimum Rate	Maximum Rate
SFY Q1 - Q4	1,019	54.839%	64.583%	75.510%	83.333%	88.525%	73.495%	24.390%	100.00%