



Module 3: Setting Up a Cleaning Cart

Activity Cards

Instructions for facility educators: Select one or more activities to engage your EVS staff in additional learning. Activities may be incorporated into regular trainings or used in other formats. You may also use this tool to orient new EVS Managers or Infection Preventionists on your team.

All activities are meant to be opportunities for collaboration where everyone is able to learn. As the instructor, it is critical to maintain a supportive teaching environment. Use this time to improve processes and offer support to staff so that they will feel comfortable coming to leadership when needed. There are prompts throughout to help you engage staff in discussion. Happy Training!

Contents

Spot it! Identify Incorrect Environmental Services (EVS) Cleaning Cart Practices	2
Pin it! Place the Supplies on the Environmental Services (EVS) Cleaning Cart	5

Spot it! Identify Incorrect Environmental Services (EVS) Cleaning Cart Practices

Purpose: Ensure staff understand correct and incorrect cleaning cart practices. Staff will identify five cleaning cart practices that could be improved and provide rationale.

Preparation time: 10-20 minutes

Activity time: 10-15 minutes

Preparation and materials:

- Gather copies of *"Spot it! Identify Incorrect EVS Cleaning Cart Practices"* worksheet (see page 3 below or the corresponding slide embedded in the Module 3 slides). Note: If using the worksheet, there is a corresponding answer key on page 4.

- Pens/Pencils

OR

- For more hands-on-activity and if timing permits, select and prepare a facility cleaning cart and stage incorrect cleaning cart practices.

Instructions:

1. Provide staff the *"Spot it! Identify Incorrect EVS Cleaning Cart Practices"* worksheet.
2. You may decide to divide your group into partners or smaller teams for this activity.
3. Ask staff to identify and circle five incorrect practices.
4. Review each incorrect practice as a group. Staff can discuss each practice in smaller teams for 1-2 minutes.
5. Come back to the larger group and have one or more groups share their responses. In a larger group, you may ask for volunteers to provide the rationale for each practice identified.
6. For each incorrect practice, review correct answers with the group and provide any additional comment or discussion.

For hands-on activity:

Place items conveying both good and bad cleaning cart practices in a facility cleaning cart or resident room for staff to identify. Review correct and incorrect answers with staff and provide any additional comment or discussion. See examples below for correct and incorrect practices to set up.

Examples of correct practices:

- Having a locked cart
- Having ABHR accessible on the cart
- Having enough microfiber cloths to clean the resident's room

Examples of incorrect practices:

- Using a spray bottle
- Using unnecessary PPE
- Using dirty cloths on clean surfaces
- Storing food on the cart

Spot it! Identify Incorrect EVS Cleaning Cart Practices

Identify and circle the five incorrect Environmental Services (EVS) cart practices.

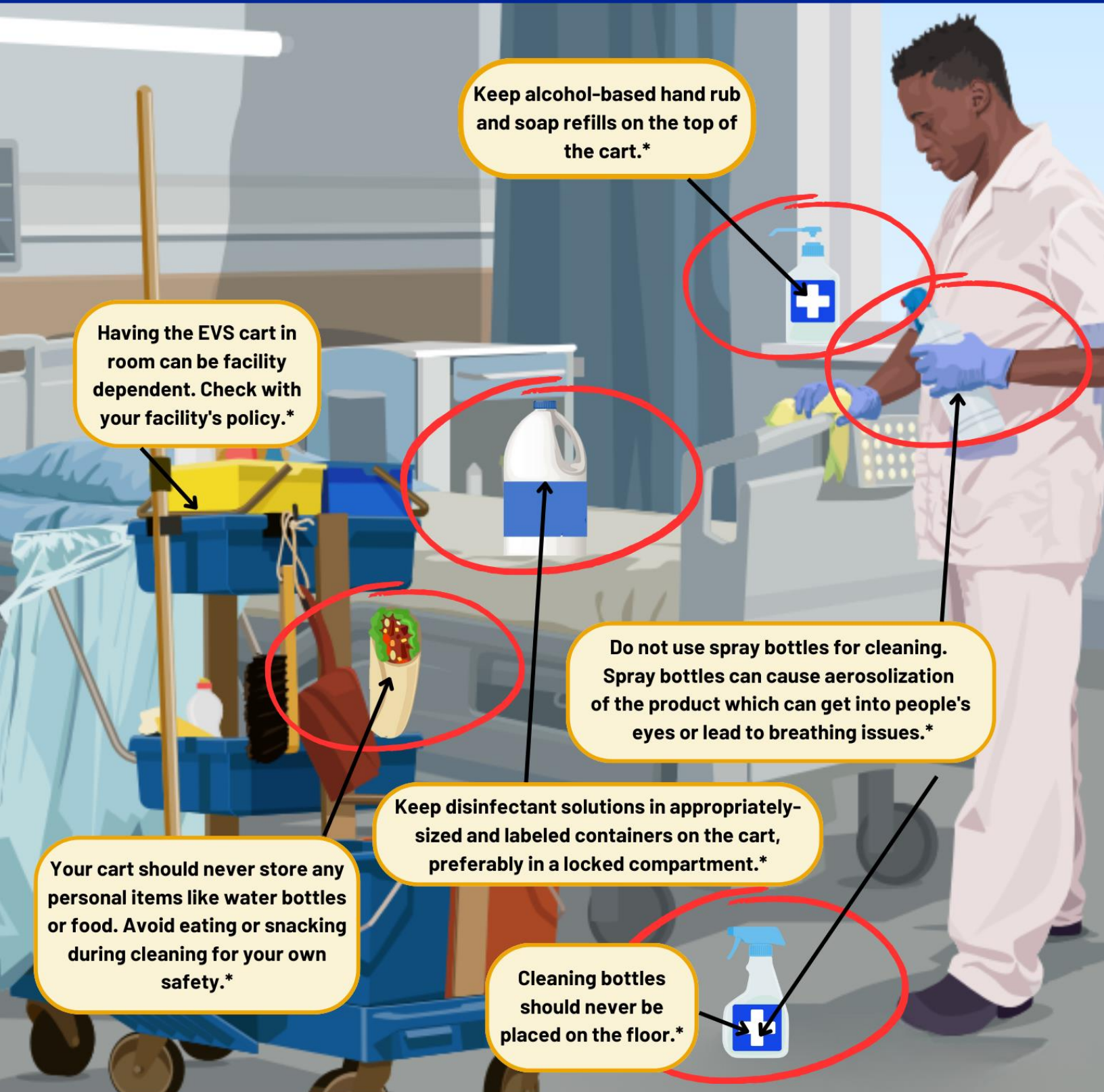


Spot it! Identify Incorrect EVS Cleaning Cart Practices

Identify and circle the five incorrect Environmental Services (EVS) cart practices.

Answer Key

Answers are bolded and marked with an asterisk (*)



Pin it! Place the Supplies on the Environmental Services (EVS) Cleaning Cart

Purpose: Ensure staff know where to properly place items in an EVS cleaning cart. Staff will identify seven items as correct or incorrect items to place in an EVS cart and identify correct placement on the cart.

Preparation

time: 5-10 minutes

Activity

time: 10-15 minutes

Preparation and materials:

- Gather copies of *"Pin it! Place the Supplies on the EVS Cleaning Cart"* worksheet (see page 6 or the corresponding slide embedded in the Module 3 slides). Note: if using the worksheet, there is a corresponding answer key on pages 7 and 8.
 - Pens/pencils
- OR
- For more hands-on activities and if timing permits, provide staff with an empty facility cleaning cart and proper and improper facility cleaning cart items.

Instructions:

1. Provide staff with *"Pin it! Place the Supplies on the EVS Cleaning Cart"* worksheet.
2. Review items on the worksheet and have staff identify where they would place each item on the cleaning cart.
3. You may decide to have staff work individually or divide your group into partners or smaller teams for this activity.
4. Give staff 10 minutes to review/fill out the worksheet or engage in small group discussion.
5. Have staff draw an arrow one at a time to "place" items in the appropriate cart area and provide rationale (see answer key for talking points) for why they would place the item on a particular cart area. Have staff draw an "X" on items that do not belong and provide rationale for why they would not place the item on the cart.
6. Come back to the larger group and ask for volunteers to share their responses and rationale for placing each item on the cleaning cart.
7. Review correct answers for each item's placement as a group and provide any additional comment or discussion.

For hands-on activity:

Provide staff with an empty facility cleaning cart and proper and improper facility cleaning cart items. Have staff volunteer to place the items in the correct cleaning cart location (e.g. top, inside, front deck, outside) and provide rationale. Review correct and incorrect answer with staff and provide any additional comment or discussion.

Note: Reference *Pin it! Answer Key* and Module 3 training for cleaning cart items and placement examples.

Pin it!

Pin the equipment in the Environmental Services (EVS) cart.

Draw arrows connecting the equipment to the correct area it should be placed in the cart.

Place an "X" on the image if it does not belong!

1



Microfiber Cloths

2



Disinfection Wipes

3



Alcohol-Based Hand Rub (ABHR)

7



Spray Bottle

6



Bleach

4



Drink

5



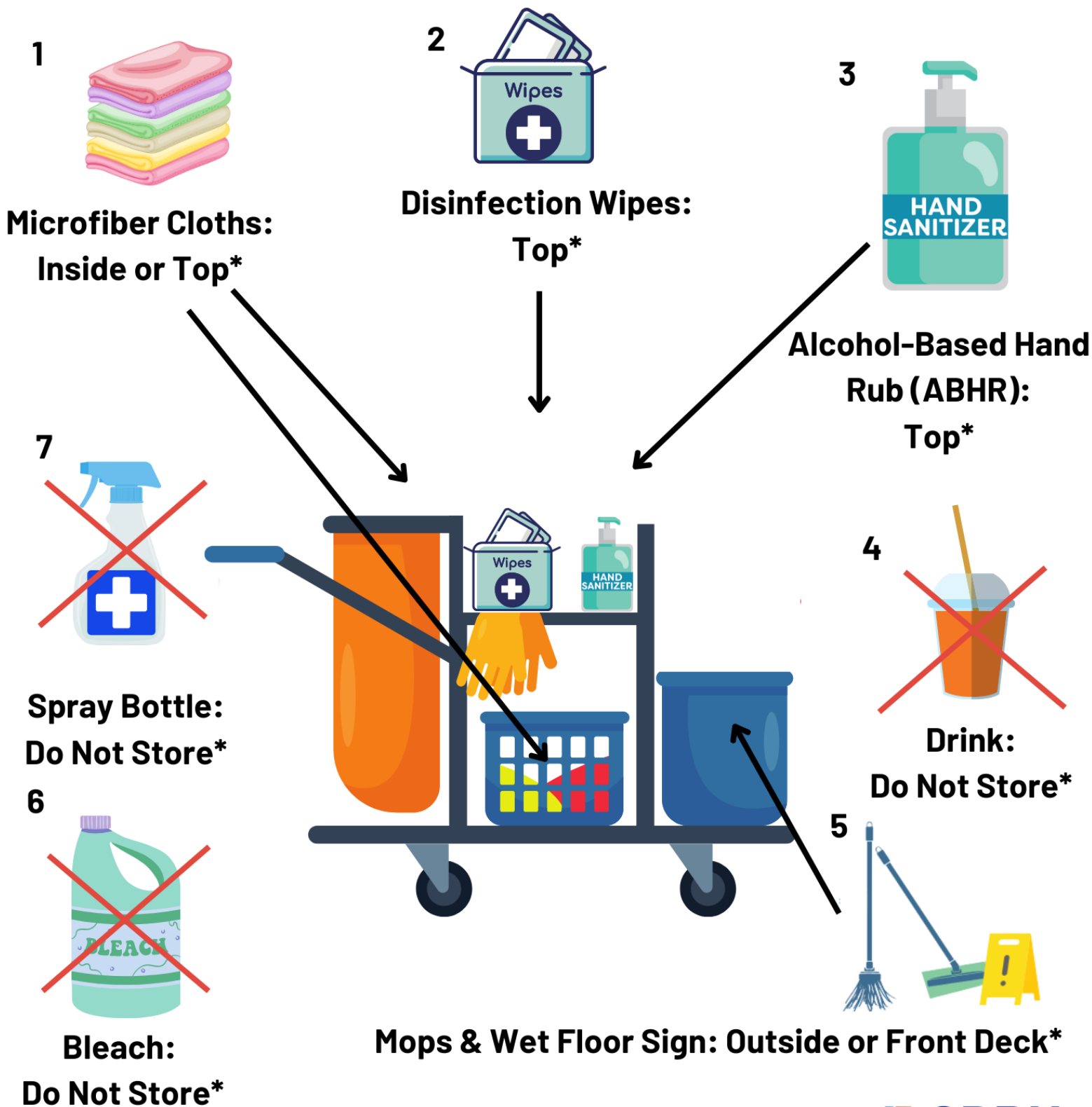
Mops & Wet Floor Sign



Pin it! Place the Supplies on the EVS Cleaning Cart

Answer Key

Answers are bolded and marked with an asterisk (*)



Answer Key Rationale

#	Item	Answer	Rationale
1	Microfiber Cloths	Inside or Top of Bin	<ul style="list-style-type: none"> • Dry microfiber cloths kept inside cart to keep clean and dry. • Microfiber cloths in use should be placed in bin on top of cart saturated in disinfectant.
2	Disinfectant Wipes	Top	<ul style="list-style-type: none"> • Wipes may be on top or inside cart depending on facility policy. • Convenient access for efficient restocking of resident room supplies.
3	Alcohol-Based Hand Rub (ABHR)	Top	<ul style="list-style-type: none"> • Accessible ABHR at the top of cart makes performing hand hygiene easier.
4	Food & Drink	Do Not Store	<ul style="list-style-type: none"> • Never store any personal items like water bottles or food. • Avoid eating or snacking during cleaning for your own safety.
5	Mops & Wet Floor Caution Sign	Front Deck or Outside	<ul style="list-style-type: none"> • Mops with removable mopheads or floor mops should be switched out between each room or when grossly soiled. • Buckets, wet floor caution signs, and bags for soiled linen and trash stored outside for accessibility and efficiency of use.
6	Cleaning & Disinfecting Solutions	Do Not Store	<ul style="list-style-type: none"> • Bleach should not be stored in the cart. • Bleach should be premixed & in squirt bottle or in canister.
7	Cleaning & Disinfecting Spray Bottle	Do Not Store	<ul style="list-style-type: none"> • Do not use spray bottles for cleaning. • Spray bottles can cause aerosolization of the product which can get into people's eyes or lead to breathing issues.