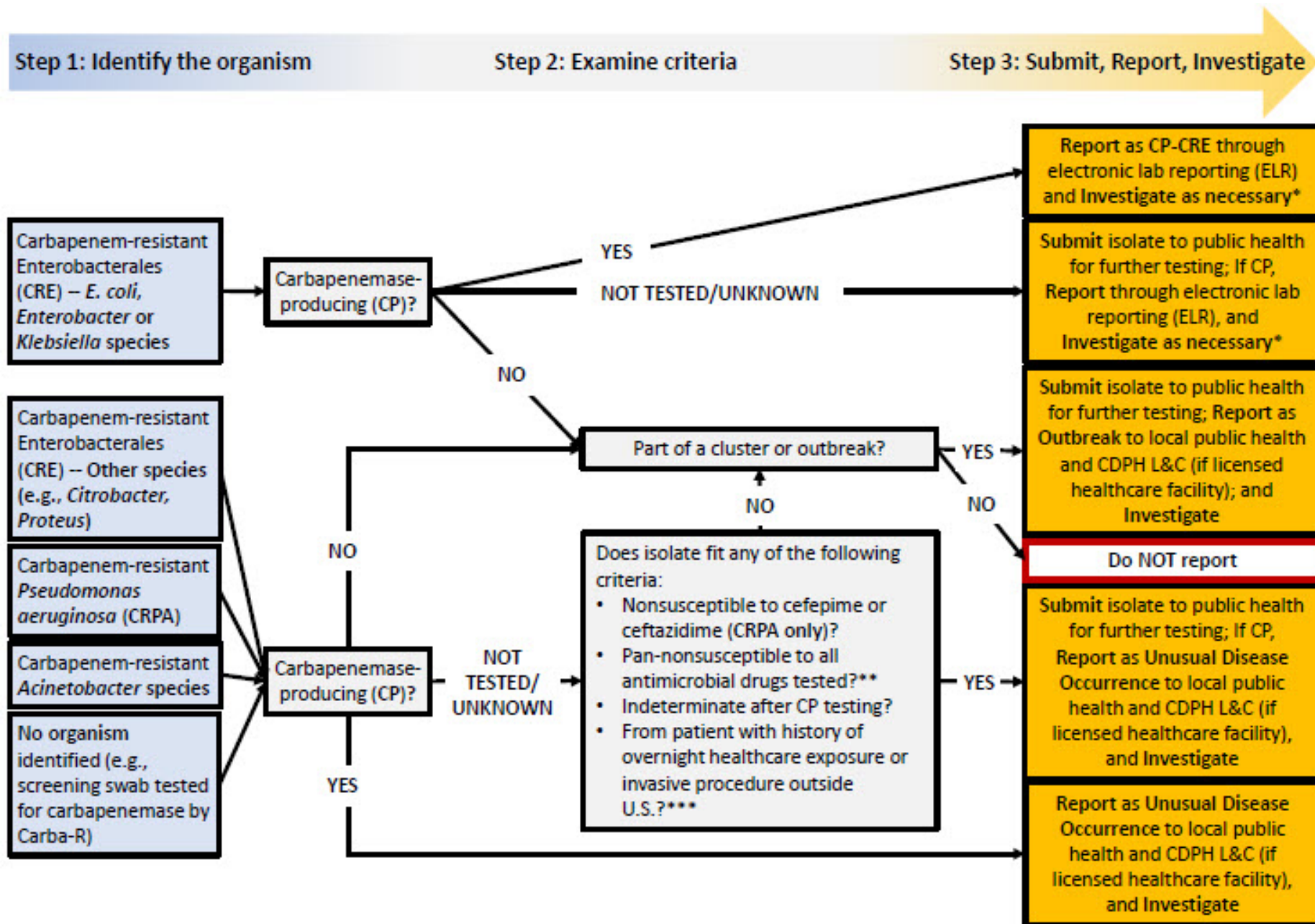


Algorithm for Prioritizing Carbapenemase Testing



Contact HAIProgram@cdph.ca.gov for more information or consultation

*Investigate all cases of CP-CRPA, CP-Acinetobacter, non-KPC CP-CRE and outbreaks; and KPC CP-CRE if not endemic in facility. **Regardless of CP status, submit all pan-nonsusceptible isolates to public health for further testing. ***In order of priority and as resources allow, other relevant epidemiologically (epi)-based criteria for testing include patients: epi-linked to a new CP organism case (roommate, residing on same unit, or sharing bathroom, healthcare personnel or medical equipment); admitted from facility with known CP organism cluster/outbreak; or admitted from long-term acute care hospital or ventilator-equipped skilled nursing facility.