

Introduction to NHSN for Skilled Nursing Facilities

Last Updated 2018

Basics of Infection Prevention
Healthcare-Associated Infections Program
Center for Health Care Quality
California Department of Public Health



Objectives

- Describe National Healthcare Safety Network (NHSN) use in skilled nursing facilities (SNF)
- Access NHSN resources for SNF
- Review NHSN reports available for SNF

National Healthcare Safety Network

- Centers for Disease Control and Prevention (CDC) surveillance system
- Tracks HAI in hospitals, long term care facilities, and hemodialysis clinics
- Provides standardization
- Data used for HAI public reporting and pay for performance programs
- Accessed through a secure, web-based interface; open to all U.S. healthcare facilities at no charge

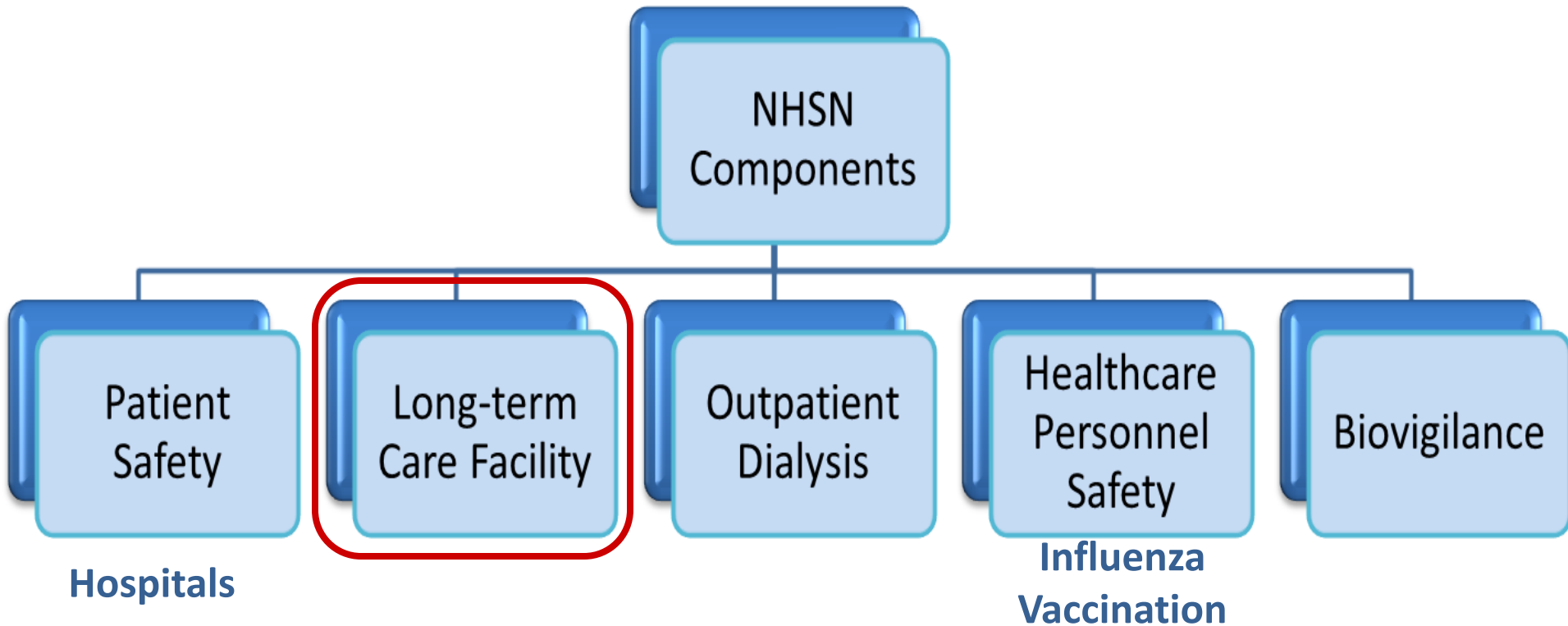
NHSN Strengths

- Provides standards for HAI surveillance
- Data are risk-adjusted for comparing to national data
- Web-based; data housed remotely
- Includes data quality checks
- Data analysis tools are built-in
- Expandable to many health care settings

NHSN Data Access

- Facilities own their NHSN surveillance data
 - May edit data at any time to improve accuracy and completeness
- Facilities may join NHSN groups to allow data access
 - Healthcare organizations and others can request or require member facilities for join their group
 - CDPH has a group for California SNF who wish to join
 - Facilities within a group cannot see each other's data

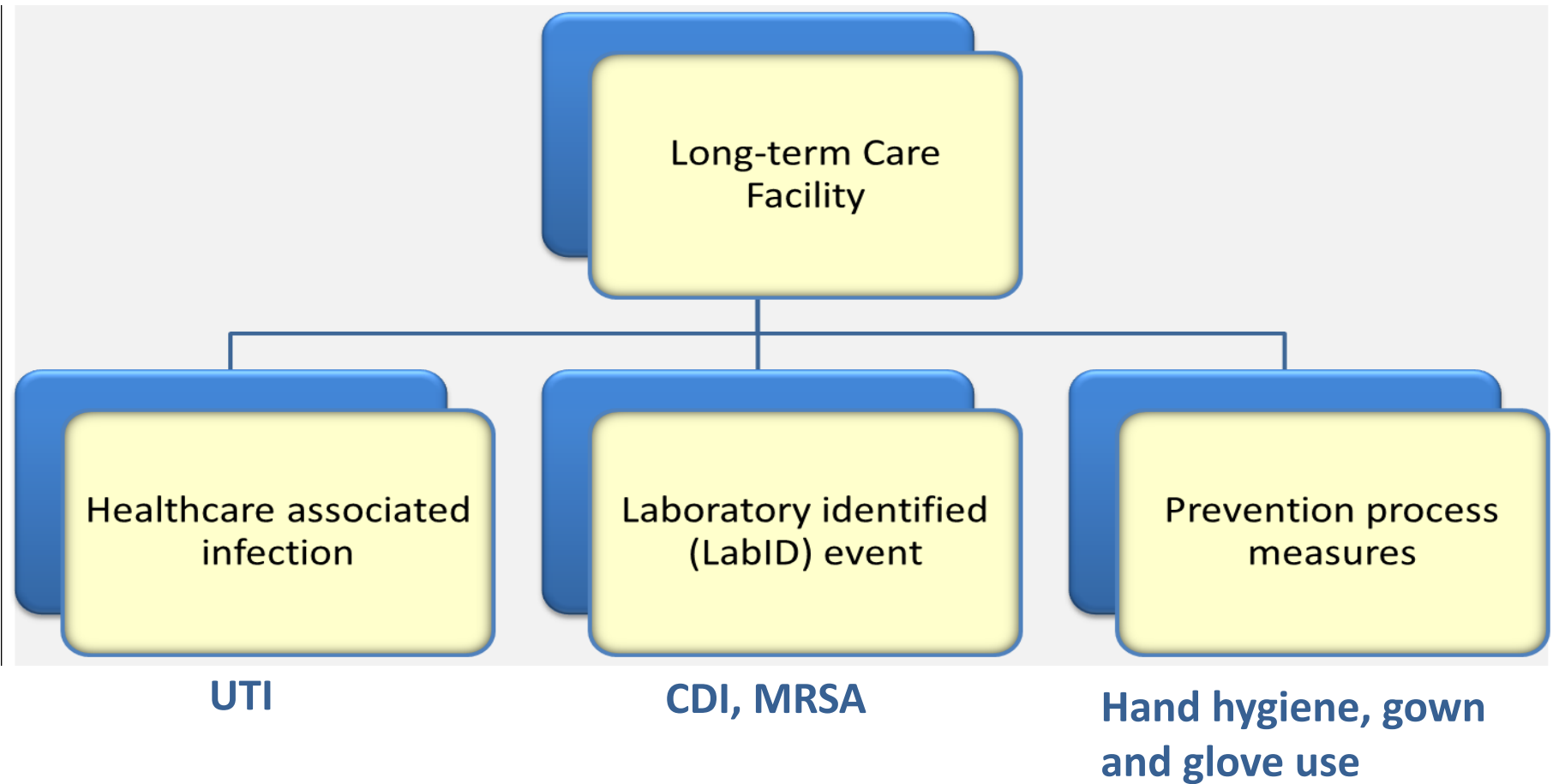
NHSN Structure



NHSN Overview

www.cdc.gov/nhsn/PDFs/pscManual/1PSC_OverviewCurrent.pdf

NHSN Structure – Long Term Care Facility Component



NHSN 1

STEP 1:

Go to NHSN webpage using the link below to learn more about NHSN

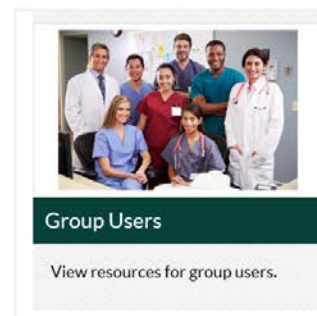
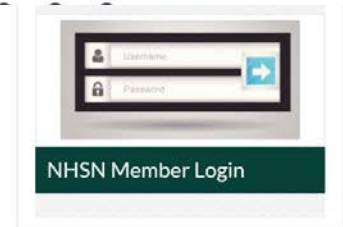
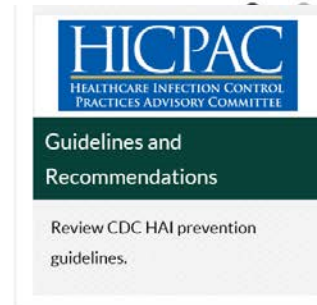
Click on this option to enroll or to just read about enrollment

National Healthcare Safety Network (NHSN)



CDC's National Healthcare Safety Network is the nation's most widely used healthcare-associated infection tracking system. NHSN provides facilities, states, regions, and the nation with data needed to identify problem areas, measure progress of prevention efforts, and ultimately eliminate healthcare-associated infections.

In addition, NHSN allows healthcare facilities to track blood safety errors and important healthcare process measures such as healthcare personnel influenza vaccine status and infection control adherence rates.



<https://www.cdc.gov/nhsn>

NHSN 2

Step 2:
On NHSN
Enrollment
page,
click on Long
Term Care
Facilities for
more
information

National Healthcare Safety Network (NHSN)

NHSN

NHSN Login

About NHSN

Enroll Here

Enrollment for Ambulatory
Surgery Centers

Acute Care
Hospitals/Facilities

Enrollment for Long-term
Acute Care
Hospitals/Facilities

Enrollment for Inpatient
Rehabilitation Facilities

Enrollment for Inpatient
Psychiatric Facilities

Enrollment for Long-term

[CDC](#) > [NHSN](#)

New to NHSN? Enroll Facility Here.

Select Your Facility Type



Acute Care Hospitals / Facilities



Enrollment for urgent care or other short-term

Ambulatory Surgery Centers



Enrollment for outpatient surgery
centers.

Long-term Acute Care Facilities



Enrollment for long-term acute
care hospitals (LTACs).

Long-term Care Facilities



Nursing homes, assisted living and
residential care, chronic care facilities
and skilled nursing facilities.

<https://www.cdc.gov/nhsn>

NHSN 3

Step 3:

On LTC Facility enrollment page, follow instructions to enroll in NHSN, obtain training and materials, or learn more



Acute Care Hospitals/Facilities	+
Enrollment for Long-term Acute Care Hospitals/Facilities	+
Enrollment for Inpatient Rehabilitation Facilities	+
Enrollment for Inpatient Psychiatric Facilities	+
Enrollment for Long-term Care Facilities	-
Set-up	
Enrollment for Outpatient Dialysis Facilities	+
Enrollment for Home Dialysis Facilities	
FAQs About Enrollment	
<u>Materials for Enrolled Facilities</u>	+
2015 Rebaseline	
Group Users	+

Step 1: Training and Preparation



Print and follow [LTCF detailed checklist](#) [PDF - 209 KB]

Complete required trainings: [Overview of the Long-term Care Facility \(LTCF\) Enrollment Process](#)

Enrollment: [Getting Access to NHSN for your LTCF](#) through the enrollment process.

Complete the [Facility Contact form](#) [PDF - 63 KB]

These forms will assist with collecting the required information that will be needed to submit these forms to NHSN. Detailed instructions for completing the Annual Facility Survey for LTCF [PDF - 485K] document.

Check trusted websites and spam blocker settings (see [detailed checklist](#) [PDF - 209 KB])

For detailed enrollment instructions, download the [NHSN Facility Administrator's Guide](#) (not specific to Long-Term Care Facilities).

<https://www.cdc.gov/nhsn>

NHSN Facility Enrollment Process

Follow instructions on enrollment page:

- Self-paced required training
- Enrollment Checklist
 - Note time estimates for each step in processes
 - All reference documents attached to Checklist

- Slide set outlines enrollment process and training:

<https://www.cdc.gov/nhsn/PDFs/LTC/slides/LTCF-Enrollment-training.pdf>

- All documents can be downloaded from:

<http://www.cdc.gov/nhsn/LTC/enroll.html>



NHSN Facility Enrollment Checklist For Long-Term Care Facilities (LTCF)

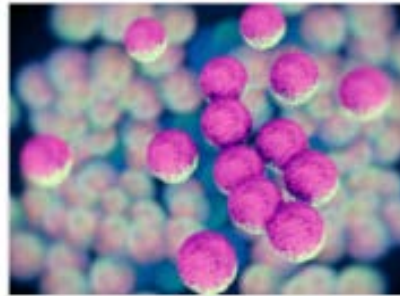
NHSN Helpdesk
nhsn@cdc.gov

✓ Complete items in order		Time
Step 1: Training and Preparation		
<input type="checkbox"/>	Complete <i>required</i> LTCF overview training: http://www.cdc.gov/nhsn/pdfs/training/ltc/overview-of-ltcf-component-training.pdf	1 hour
<input type="checkbox"/>	Complete <i>required</i> enrollment training: http://www.cdc.gov/nhsn/PDFs/LTC/slides/LTCF-Enrollment-training.pdf . NOTE: It is recommended that users print this document as a guide through the enrollment process.	1 hour
<input type="checkbox"/>	<i>Optional</i> - Complete Facility Contact Form on paper (information is needed to complete Steps 2 and 4). Do not send form to NHSN.	30 min
<input type="checkbox"/>	<i>Optional</i> - Complete Annual Survey Form on paper (information is needed to complete Step 4). Do not send form to NHSN.	30 min
<input type="checkbox"/>	In Internet Explorer, add cdc.gov and verisign.com to your list of trusted websites and permit pop-ups for these sites.	5 min
<input type="checkbox"/>	Change spam-blocker settings to allow emails from NHSN@cdc.gov, SAMS-no-reply@cdc.gov.	10 min

<https://www.cdc.gov/nhsn>

NHSN LTC Facility Surveillance Options and Resources

C. difficile & MRSA Infections



Healthcare Personnel Exposure



Urinary Tract Infections (UTI)



Healthcare Personnel Vaccination



Prevention Process Measures



Newsletters and Archived Communications



After Facility Enrollment is Complete

- Establish your monthly reporting plan
 - Tell NHSN what you will report
- Begin reporting infection “events”
- Report monthly summary data
 - Number of resident days
 - Number of indwelling catheter days
- If tracking hand hygiene or gown and glove use
 - Report number of observations and number of successful practices

NHSN Surveillance - UTI

Apply LTC facility UTI Surveillance definitions

- Two types of UTI, based on presence of device
 - UTI
 - Catheter-associated UTI (CAUTI)
- Use NHSN to track UTI data; reports can be easily created to map facility trends
- Information can be tracked based on:
 - Resident information
 - Date of infection occurrence
 - Location
 - Presence of urinary catheter

NHSN Surveillance – CDI and MRSA

Tracked in the LabID MDRO Module

- Report date of resident admission and date of specimen collection
- No need to report resident symptoms
- NHSN calculates if community onset (present on admission) or facility onset
 - Positive specimen collected on **day 1-3** is community onset
 - Positive specimen collected on or **after day 4** is facility onset

NHSN Surveillance –Hand Hygiene, Gown and Gloves

Tracked in the Prevention Process Measures Module

- NHSN can be used to record and monitor use of hand hygiene, gowns and gloves
 - Information can be tracked over time and in different locations

Event Entry Page

Specify Criteria Used ★ (check all that apply):

Signs & Symptoms

- ☒ Fever: Single temperature $> 37.8^{\circ}\text{C}$ ($> 100^{\circ}\text{F}$) or $> 37.2^{\circ}\text{C}$ ($> 99^{\circ}\text{F}$) on repeated occasions, or an increase of $> 1.1^{\circ}\text{C}$ ($> 2^{\circ}\text{F}$) over baseline
- ☐ Rigors
- ☐ New onset confusion/functional decline
- ☐ New onset hypotension
- ☐ Acute pain, swelling or tenderness of the prostate
- ☐ Acute dysuria
- ☐ Purulent drainage at catheter insertion site

- All infections are entered as “Events”
 - UTI
 - CDI
- Screen will change when you select the event type
- Most filled in using multiple choice or drop-down options

NHSN Analysis Options and Reports



Analysis Reports

Expand All

Collapse All

Search

MDRO/CDI Module - LABID Event Reporting

HAI Module

All UTI Events

Line Listing - All UTI Events

Rate Table - Total UTI Rate

Line Listing - All UTI Events with Catheter

Rate Table - CA-SUTI Incidence Rate

Line Listing - All UTI Events without Catheter

Rate Table - SUTI Incidence Rate

Rate Table - Total Urine Culture Rate

Process Measures

Advanced

My Custom Reports

Published Reports

- Reports are available to analyze your data
- NHSN compares your facility to a national standard based on HAI data from facilities across the US

Hand Hygiene / Gown and Glove Adherence

National Healthcare Safety Network Line Listing for All Process Measures

As of: March 15, 2018 at 3:30 PM

Date Range: LTCPM summaryYM

2017M10 to 2018M03

Facility Org ID	Summary Year/Month	Location	Hand Hygiene Performed	Hand Hygiene Indicated	Gown/Glove Used	Gown/Glove Indicated
30203	2017M10	FACWIDEIN	45	75	50	55
30203	2017M11	FACWIDEIN	62	75	40	43
30203	2017M12	FACWIDEIN	62	75	30	30
30203	2018M01	FACWIDEIN	44	52	42	44
30203	2018M02	FACWIDEIN	52	70	60	61

UTI Report

Facility Org ID	Resident ID	Date of Current Admission	Event ID	Event Date	Specific Event	Urinary Catheter Status	Location
30203	W00001	03/01/2016	5864	12/12/2017	CA-SUTI	INPLACE	2F
30203	W11234	10/25/2013	9281	01/06/2018	CA-SUTI	INPLACE	EAST WING
30203	W00001	04/01/2016	5856	10/24/2017	SUTI	NEITHER	EAST WING
30203	UTITESTPROD	03/09/2017	8481	01/12/2018	SUTI	NEITHER	Z-1E

CDI Reports

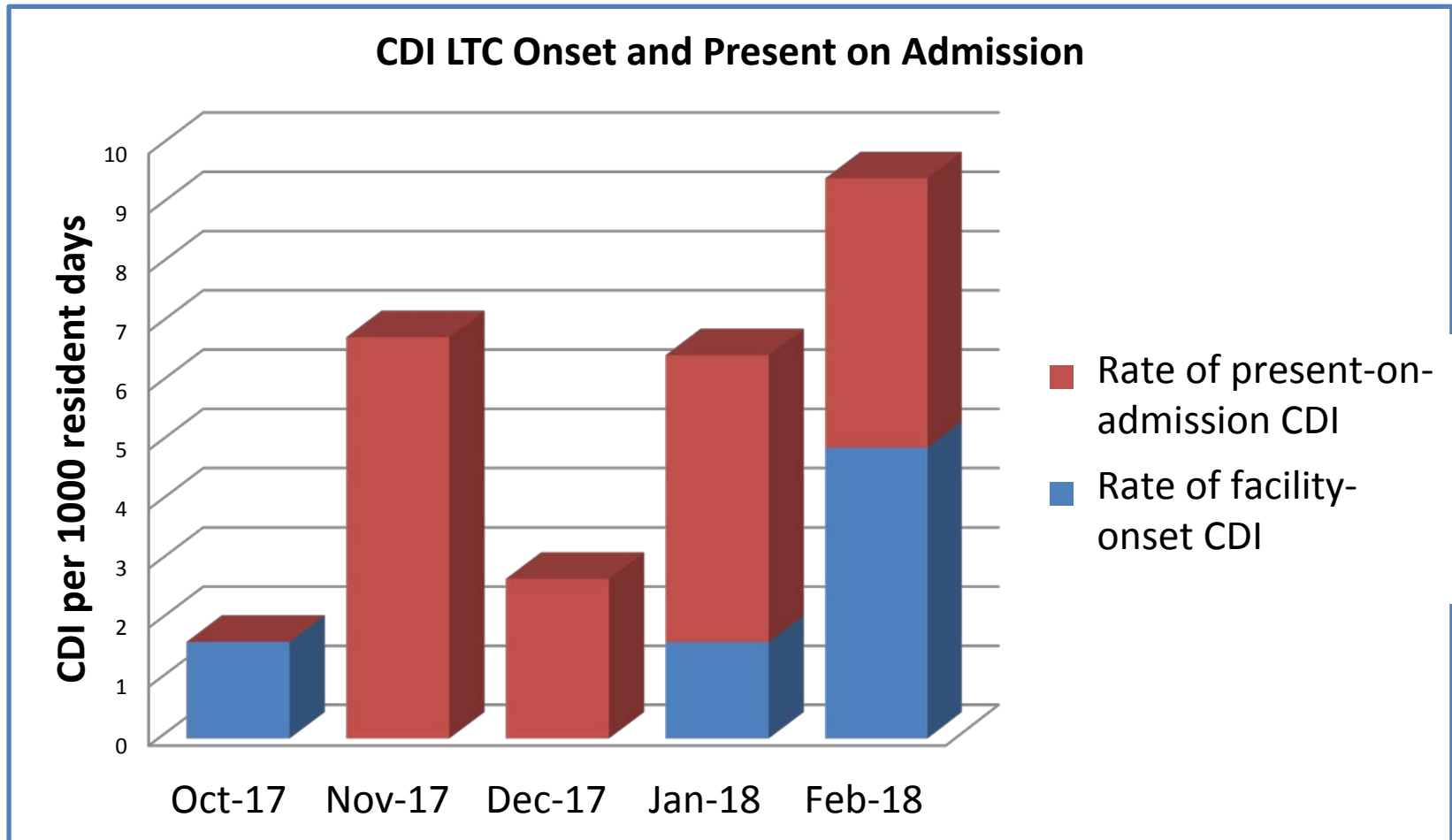
Total CDI Rate

Summary Year/Month	Location	Total CDI Count	Number of Resident Days	Total CDI Rate
2017M10	FACWIDEIN	1	6100	1.639
2017M11	FACWIDEIN	0	6108	0
2017M12	FACWIDEIN	0	6102	0
2018M01	FACWIDEIN			
2018M02	FACWIDEIN			

CDI Treatment Prevalence on Admission

Summary Year/Month	Location	Admissions on C. diff Treatment	Number of Resident Admissions	CDI Treatment Prevalence
2017M10	FACWIDEIN	0	60	0
2017M11	FACWIDEIN	4	59	6.78
2017M12	FACWIDEIN	2	74	2.703
2018M01	FACWIDEIN	3	62	4.839
2018M02	FACWIDEIN	3	66	4.545

CDI Graph



Summary

- NHSN is a surveillance system used for recording data
- NHSN has analysis features for interpreting data and comparing infection rates over time
- See training and other resources at www.cdc.gov/nhsn

Questions?

For more information,
please contact any
HAI Program Team member

Or email

HAIProgram@cdph.ca.gov