

## Viewing Instructions for the Interactive Radiation Machine Registration Form

Follow these instructions if you see one of the error messages below when trying to open the Interactive Radiation Machine Registration Form. To download or install Adobe Acrobat Reader DC or Adobe Acrobat Pro DC, please visit the Adobe website.

### Error Messages:

The document you are trying to load requires Adobe Reader 8 or higher. You may not have the Adobe Reader installed or your viewing environment may not be properly configured to use Adobe Reader.

For information on how to install Adobe Reader and configure your viewing environment please see [http://www.adobe.com/go/pdf\\_forms\\_configure](http://www.adobe.com/go/pdf_forms_configure).

or

### Please wait...

If this message is not eventually replaced by the proper contents of the document, your PDF viewer may not be able to display this type of document.

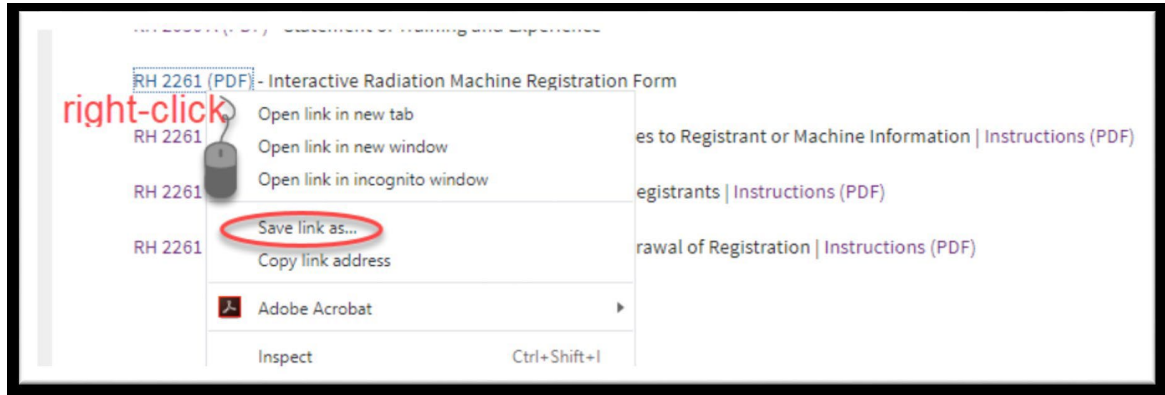
You can upgrade to the latest version of Adobe Reader for Windows®, Mac, or Linux® by visiting [http://www.adobe.com/go/reader\\_download](http://www.adobe.com/go/reader_download).

For more assistance with Adobe Reader visit <http://www.adobe.com/go/acrreader>.

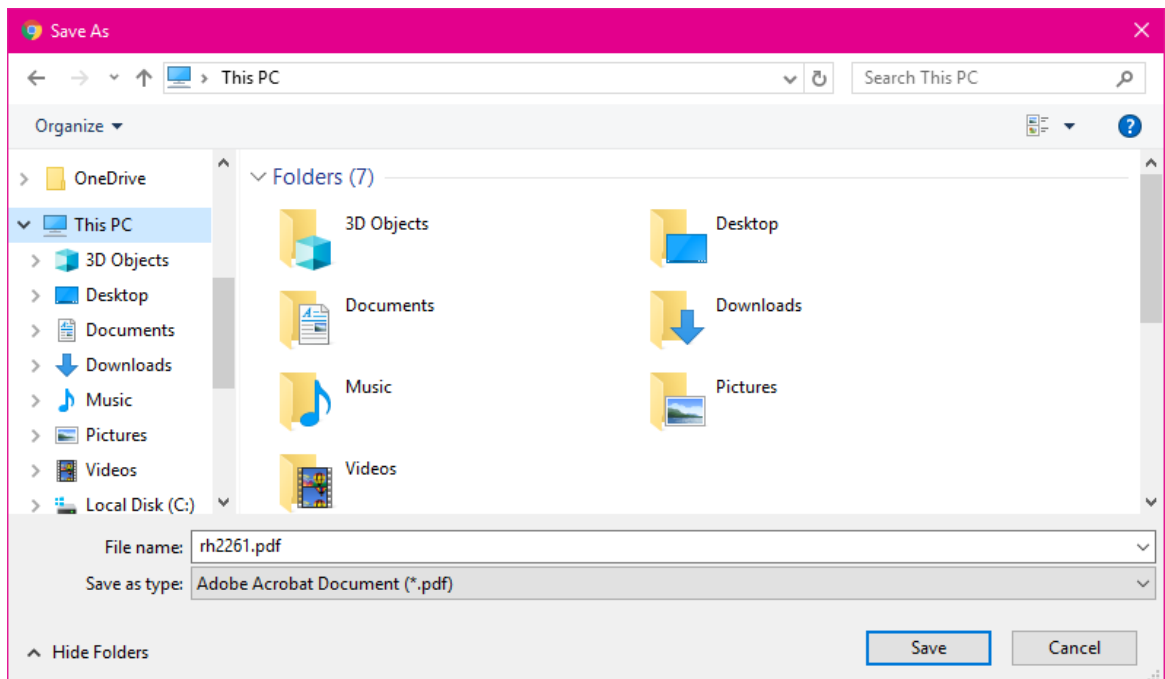
Windows is either a registered trademark or a trademark of Microsoft Corporation in the United States and/or other countries. Mac is a trademark of Apple Inc., registered in the United States and other countries. Linux is the registered trademark of Linus Torvalds in the U.S. and other countries.

## Troubleshooting Instructions:

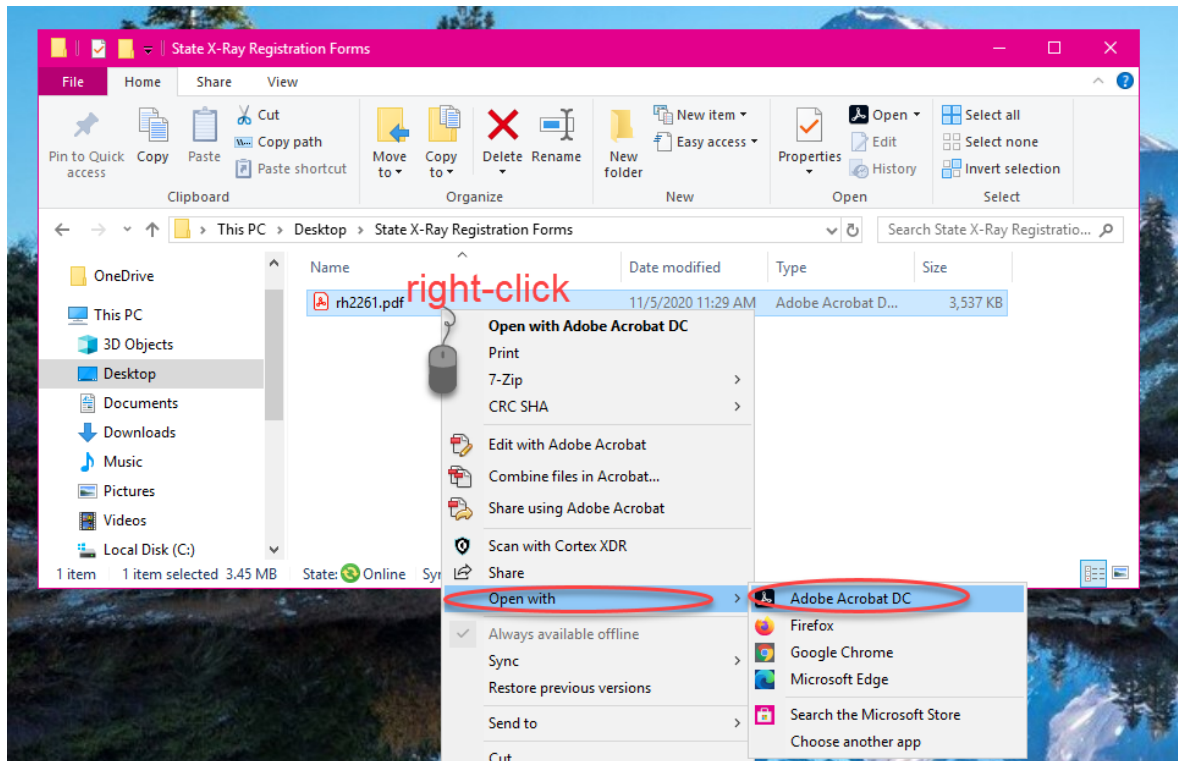
1. Right-click on the link (do not left-click and open it), and then click on “Save link as”.



2. When you see a Save-As pop-up window, such as below, save the file in the desired location.



- Then, on your local computer, navigate to the location of the file and open the file using Adobe Acrobat Reader DC or Adobe Acrobat Pro DC. If your computer doesn't open the file in an Adobe Acrobat application by default, then you may have to right-click and choose "Open with" and choose either Adobe Acrobat Reader DC or Adobe Acrobat Pro DC.



- You should now be able to use the Interactive Form from your local computer.