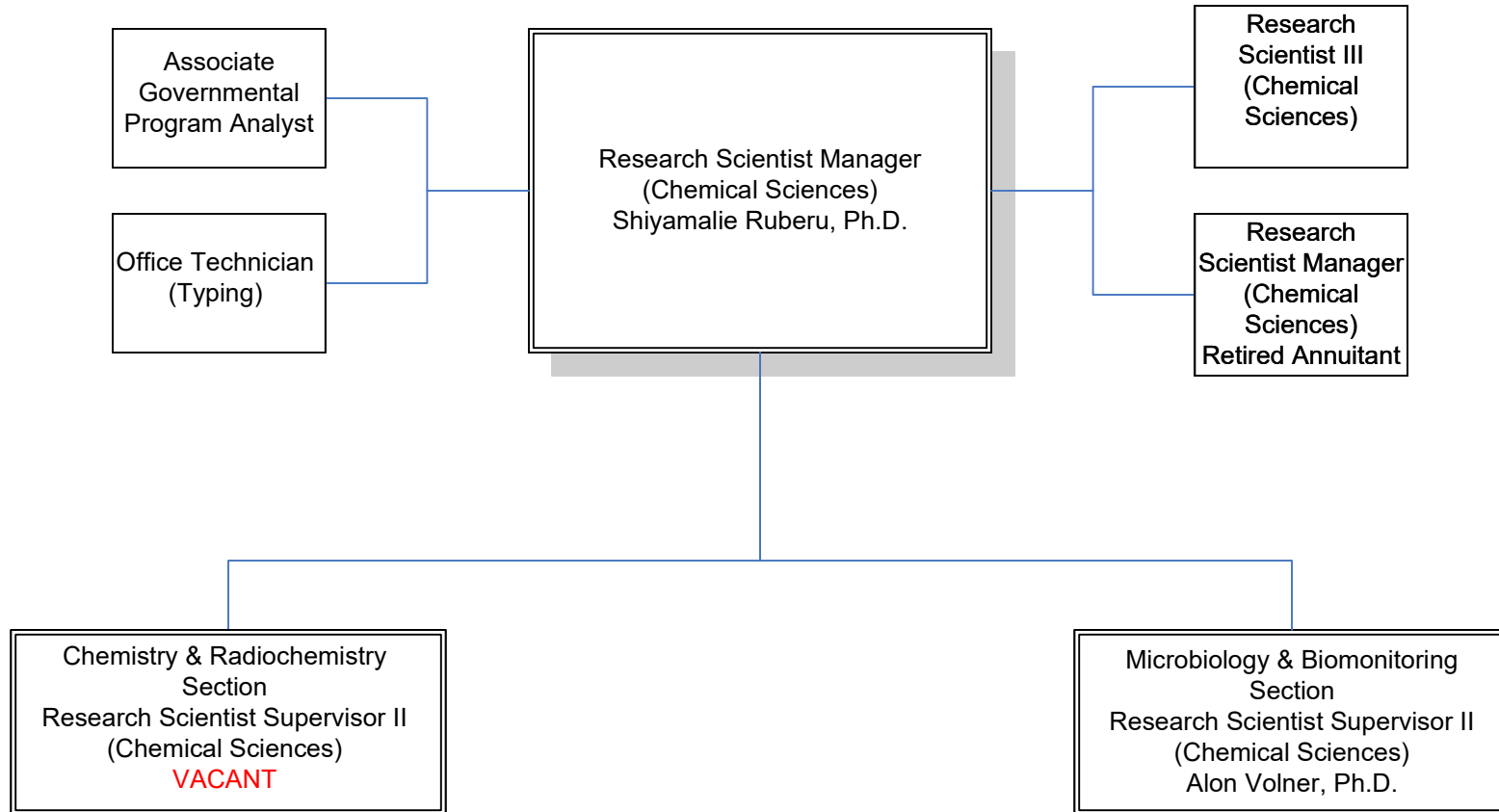




California Department of Public Health
Center for Environmental Health



Division of Radiation Safety & Environmental Management
Drinking Water and Radiation Laboratory Branch



Shiyamalie Ruberu, Ph.D., Branch Chief
Drinking Water & Radiation Laboratory Branch

**California Department of Public Health
Drinking Water and Radiation Laboratory Branch**

Research Scientist Manager (Chemical Sciences) Shiyamalie Ruberu, who reports directly to the Chief of Division of Radiation Safety and Environmental Management. Direct subordinates are (1) Associate Governmental Program Analyst, (1) Office Technician (Typing), (1) Research Scientist 3, (1) Research Scientist Manager (Chemical Sciences) Retired Annuitant, (2) Research Scientist Supervisor 2 consisting of the Chemistry and Radiochemistry Section Chief (currently vacant) and Microbiology and Biomonitoring Section Chief Alon Volner.

Associate Governmental Program Analyst who reports directly to the Research Scientist Manager (Chemical Sciences).

Office Technician (Typing) who reports directly to the Research Scientist Manager (Chemical Sciences).

Research Scientist 3 who reports directly to the Research Scientist Manager (Chemical Sciences).

Research Scientist Manager (Chemical Sciences) Retired Annuitant who reports directly to the Research Scientist Manager (Chemical Sciences).

Research Scientist Supervisor 2 who reports directly to the Research Scientist Manager (Chemical Sciences).

Research Scientist Supervisor 2 who reports directly to the Research Scientist Manager (Chemical Sciences).