

Community Outbreak Preparedness Index COPI

January 4, 2024

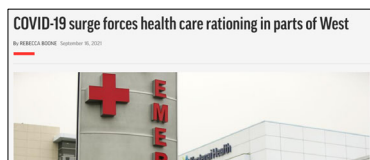


Heluna Health®

1

Why Local-Level Outbreak Preparedness Matters

- Local entities are the front-line for outbreak detection and response
- Early detection and response prevents further spread
- Lessons learned from COVID-19 pandemic



Public Health Labs Suffered Budget Cuts Prior To The Coronavirus Pandemic

April 28, 2020 - 5:01 AM ET
Heard on Morning Edition
By Tom Schick, Geoff Hing

FROM **APMreports.**

3-Minute Listen

PLAYLIST 2 1 3



2

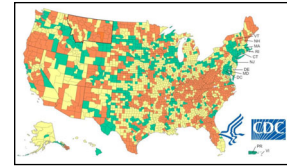
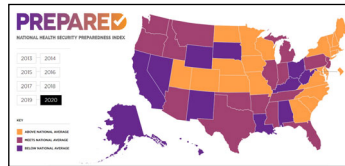


2

Preparedness Indices – Where Is The Gap?

- Preparedness indices – mostly global or state level
- Local-level indices have more narrow focus:
 - Risk/vulnerability to a specific disease
 - Hospital preparedness

The Gap:
Local-level index focused on
preparedness for future
outbreaks



University of Maryland Medicine Study Gauges Hospital Preparedness for the Next National Medical Crisis

August 11, 2021 | Deborah Kotz



3



3

Goal of the COPI Project

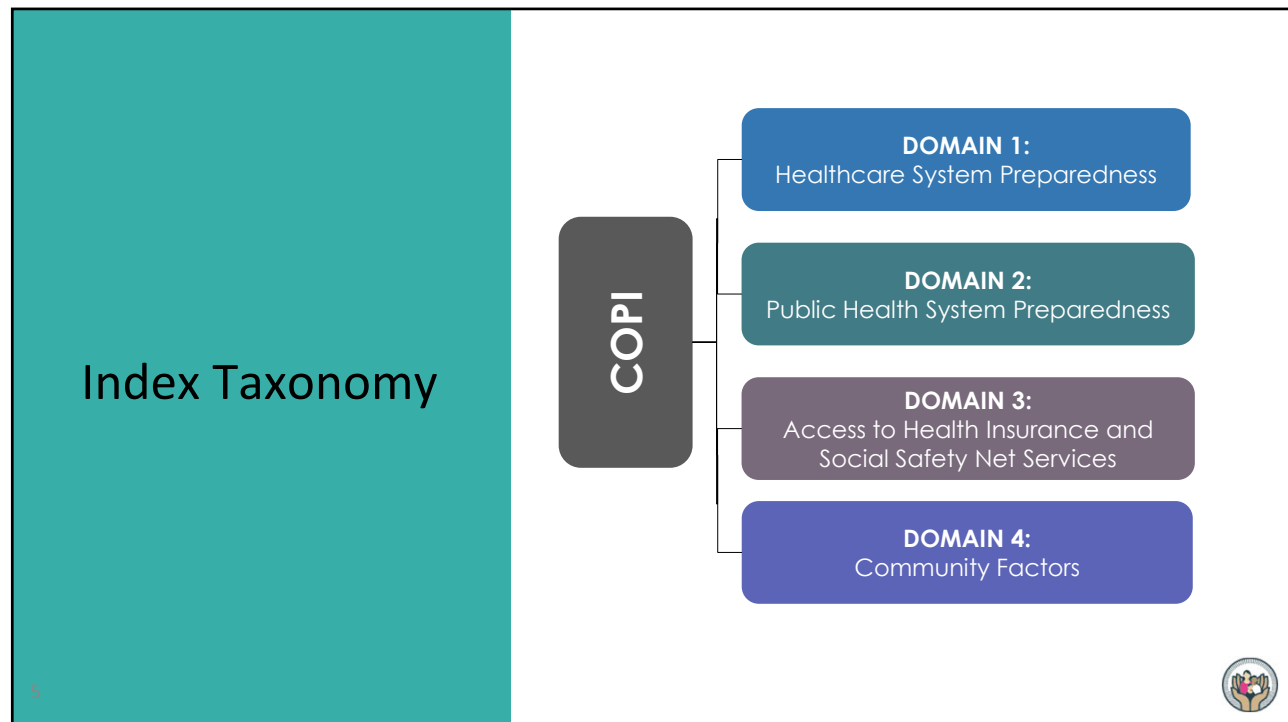
- **Goal:** To provide a tool for leaders to assess county-level outbreak preparedness and guide data-informed decisions in resource allocation and preparedness investments
- **Focus:** Local systems that contribute to a county's ability to prevent, detect, and respond to communicable disease outbreaks



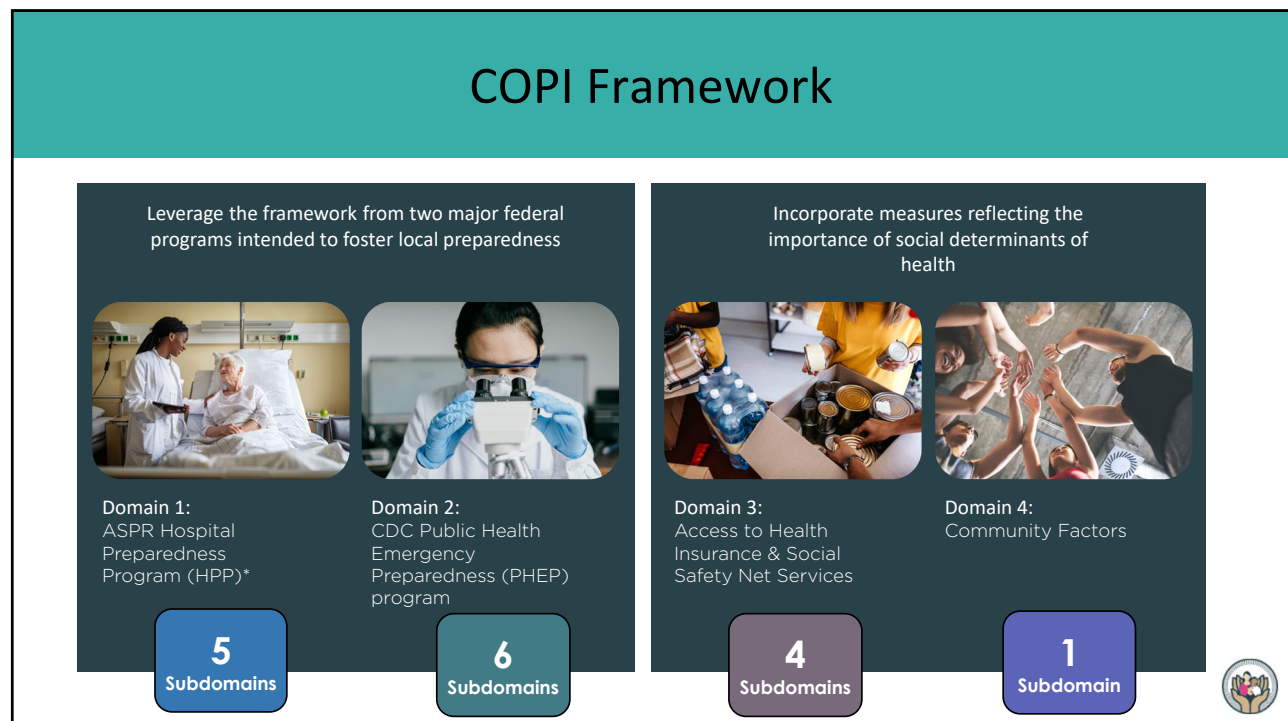
4



4



5



6

Examples of Data Sources



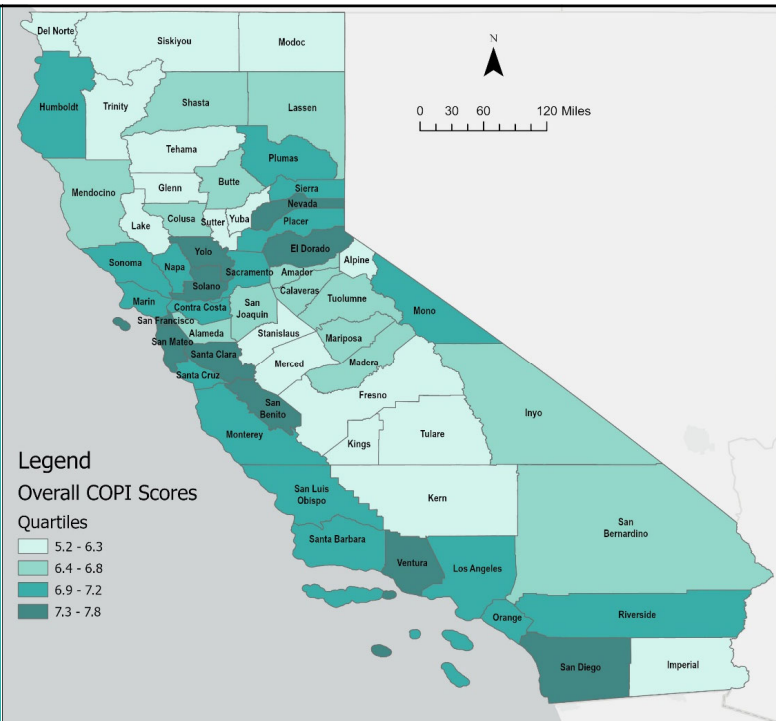
7

Findings

8

COP1: Summary of Findings

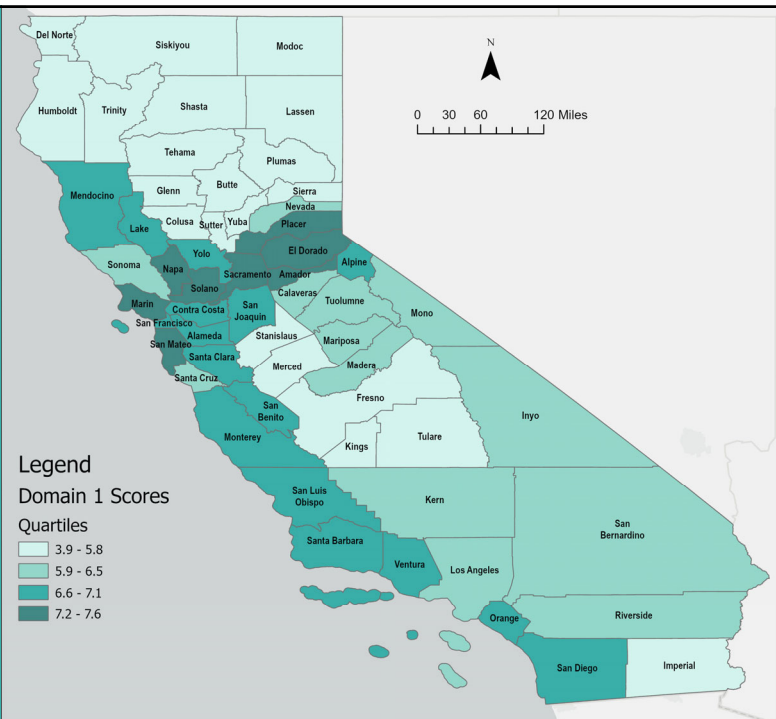
- Counties with lower scores had younger populations, lower education levels, and greater proportions of people of Hispanic ethnicity
- Social safety net access was similar across the state



9

Domain 1 – Healthcare System Preparedness

- Higher scores in urban areas compared to rural areas
- Scores across California were particularly low for medical surge capabilities

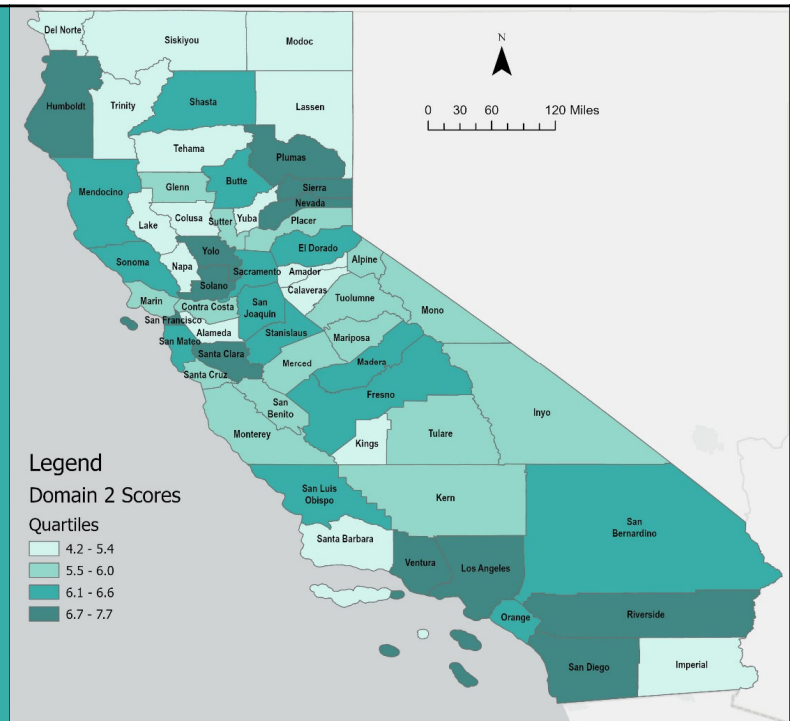


10

Domain 2 – Public Health System Preparedness

- Wide range of scores for Community Preparedness and Recovery
- CalSuWers data used to assess coverage of wastewater surveillance

11

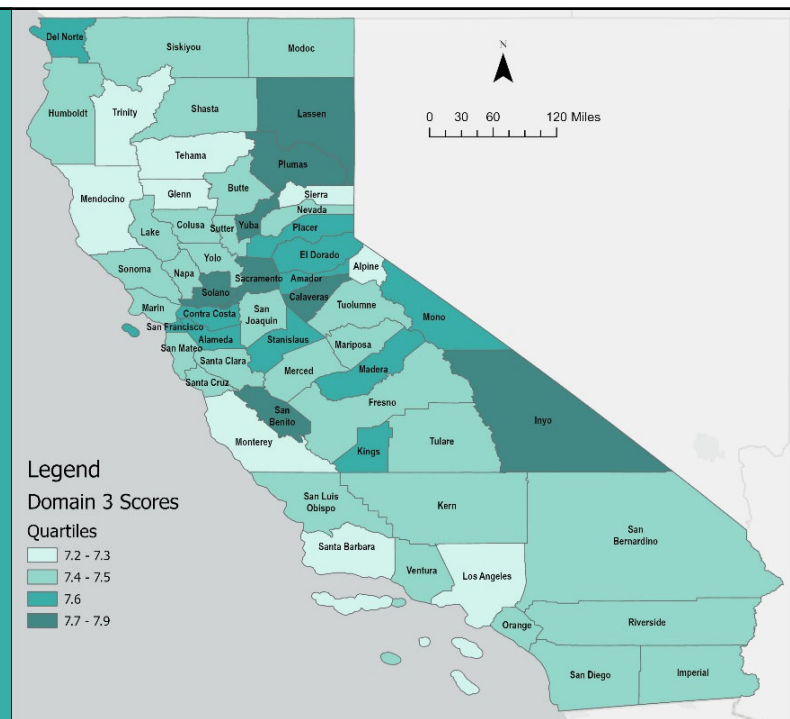


11

Domain 3 – Access to Health Insurance and Social Safety Net Services

- Narrow range of scores
- Scores for Access to Health Insurance are high, at least partly due to expanded Medicaid eligibility

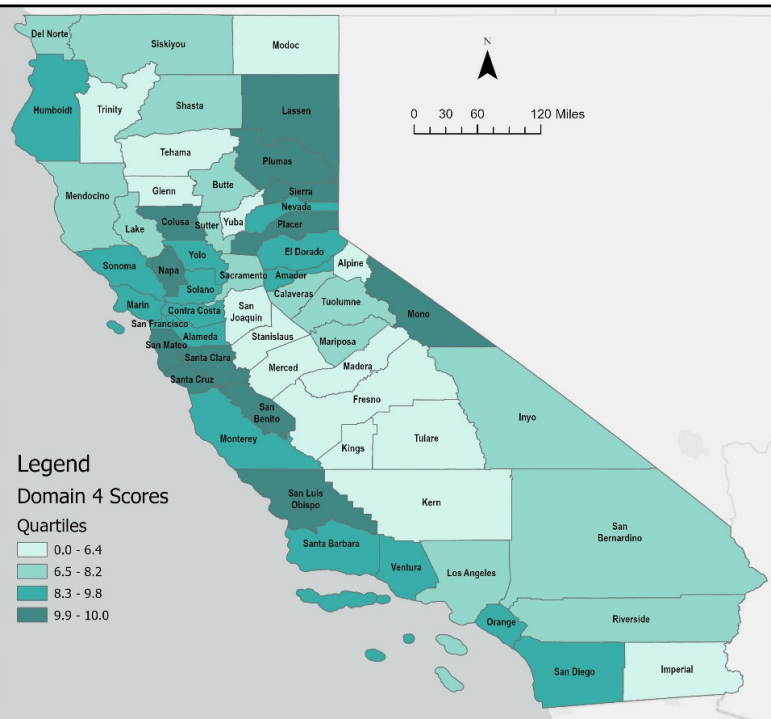
12



12

Domain 4 – Community Factors

- Based on Environmental Justice Index
- Lower scores in many rural counties



13

CA Housing Issues Impact Preparedness

Affordability

In 48 of 58 counties in California, at least 15% of households spend half or more of their income on housing

- Less to spend on care
- May need to work through illness

Quality

In 50 of California's 58 counties, at least 20% of households faced one or more housing quality issues.

- Increases risk of disease transmission
- Impedes recovery



	County	housing affordability	housing quality
1.	Los Angeles	23.8%	32.9%
2.	San Diego	20.4%	25.0%
3.	Orange	19.7%	26.8%
4.	Riverside	19.9%	25.4%
5.	San Bernardino	18.9%	26.3%
6.	Santa Clara	16.1%	22.9%
7.	Alameda	17.7%	23.5%
8.	Sacramento	17.9%	22.1%
9.	Contra Costa	16.5%	20.5%
10.	Fresno	19.5%	26.8%
11.	Kern	17.4%	24.3%
12.	San Francisco	16.1%	23.9%
13.	Ventura	18.1%	23.3%
14.	San Mateo	17.4%	23.5%
15.	San Joaquin	18.1%	24.5%
	Average of all CA counties	17.3%	22.5%

[The Impact Of Housing Cost And Quality On Outbreak Preparedness](#), Heluna Health Data Brief

14



14

COPI: Strengths and Limitations

Strengths

- Based on capabilities of 2 major federal programs
- Highlights core needs for outbreak preparedness
- Fills a gap in outbreak preparedness tools
- Accounts for community-level SDOH factors as well as system-level factors

Limitations

- Relies on available data; recent improvements are not reflected
- More detailed data would help target improvements
- Preparedness science is still developing

15



15

COPI: Next Steps and Engagement

- **COPI v2:**
 - Data improvements
 - Focus on public health preparedness, workforce
- **Focus Group:** Inviting HOAC members to a 1-hour focus group, to provide feedback and guidance
 - If interested, please contact Mark Gersh (mgersh@helunahealth.org)



16



16

Thank you!



Heluna Health®

Heluna Health Contact Information:

Jo Kay Ghosh, PhD, MPH
Director of Research and Evaluation
ighosh@helunahealth.org
562-222-7771

Mark Gersh
Director of Growth Strategy
mgersh@helunahealth.org
562-222-7730

17

