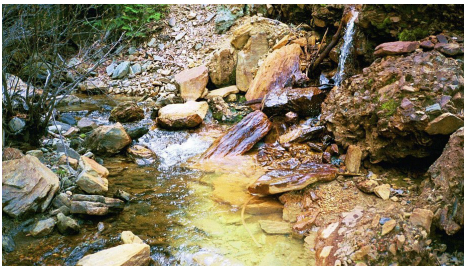


Blue Ledge Mine Area Precautions

What is the former Blue Ledge Mine?

Blue Ledge Mine is a former copper and zinc mine (1904-1930) in the Rogue River-Siskiyou National Forest. In 2011, the U.S. Environmental Protection Agency (US EPA) classified the mine as a “Superfund Site” because it contained harmful chemicals. The U.S. Forest Service and US EPA removed several thousand tons of contaminated waste rock and built a drainage system to capture and contain the remaining contamination. **By taking precautions to avoid the remaining contamination, visitors can safely recreate in the mine site area.**

What precautions should I take in the mine area?



Joe Creek

Acidic water that drains from old mine tunnels empties into Joe Creek at the base of the mine. As a result, the creek water has high amounts of copper. **Drinking this water may cause abdominal pain, vomiting, and nausea.**

- ▶ Do not drink water from Joe Creek.



Mine Treatment Ditches

Ditches were constructed to capture and treat acidic water draining from old mine tunnels. **The ditches might contain high amounts of heavy metals that could be harmful to health.**

- ▶ Do not enter the ditches.
- ▶ Do not drink water from the ditches.
- ▶ Do not touch dirt in the ditches.

What activities are safe to do in the mine area?

- ▶ Recreational activities, such as hiking, biking, camping, etc.
- ▶ Swimming or wading in Elliott Creek and Applegate River
- ▶ Eating fish from Elliott Creek and Applegate River

Where can I find additional information?

■ California Department of Public Health

Contact Russ Bartlett, Chief of Site Assessment Unit: 510-620-3610 | russell.bartlett@cdph.ca.gov

[CDPH Blue Ledge Mine Webpage](http://www.cdph.ca.gov/Blue-Ledge) (www.cdph.ca.gov/Blue-Ledge)

■ U.S. Environmental Protection Agency

Contact Eric Canteenwala, Superfund Project Manager: 415-972-3932 | canteenwala.eric@epa.gov

[US EPA Blue Ledge Mine Webpage](http://www.epa.gov/superfund/search-superfund-sites-where-you-live) (www.epa.gov/superfund/search-superfund-sites-where-you-live)