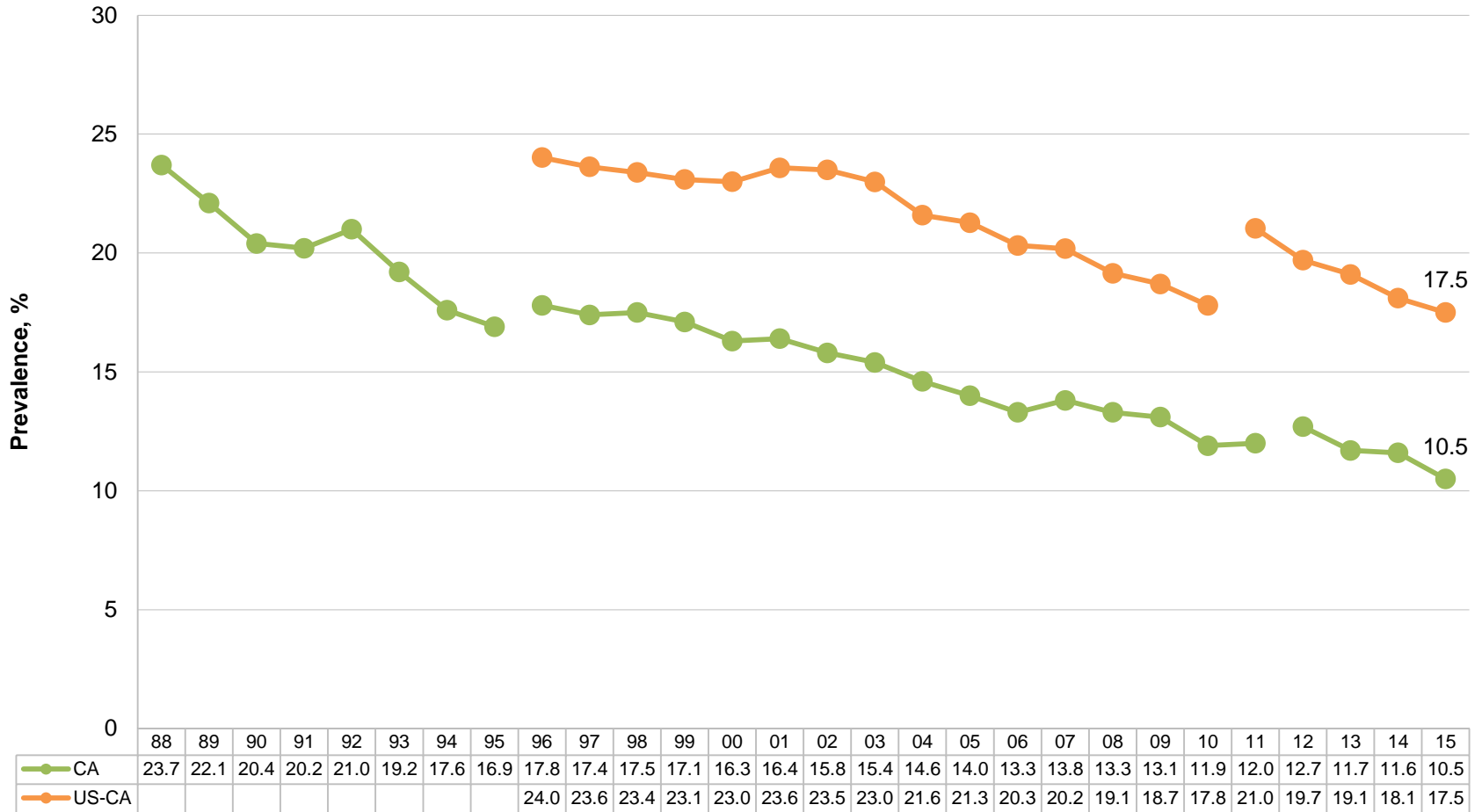




Adult Cigarette Smoking Prevalence California vs. Rest of the United States, 1988-2015

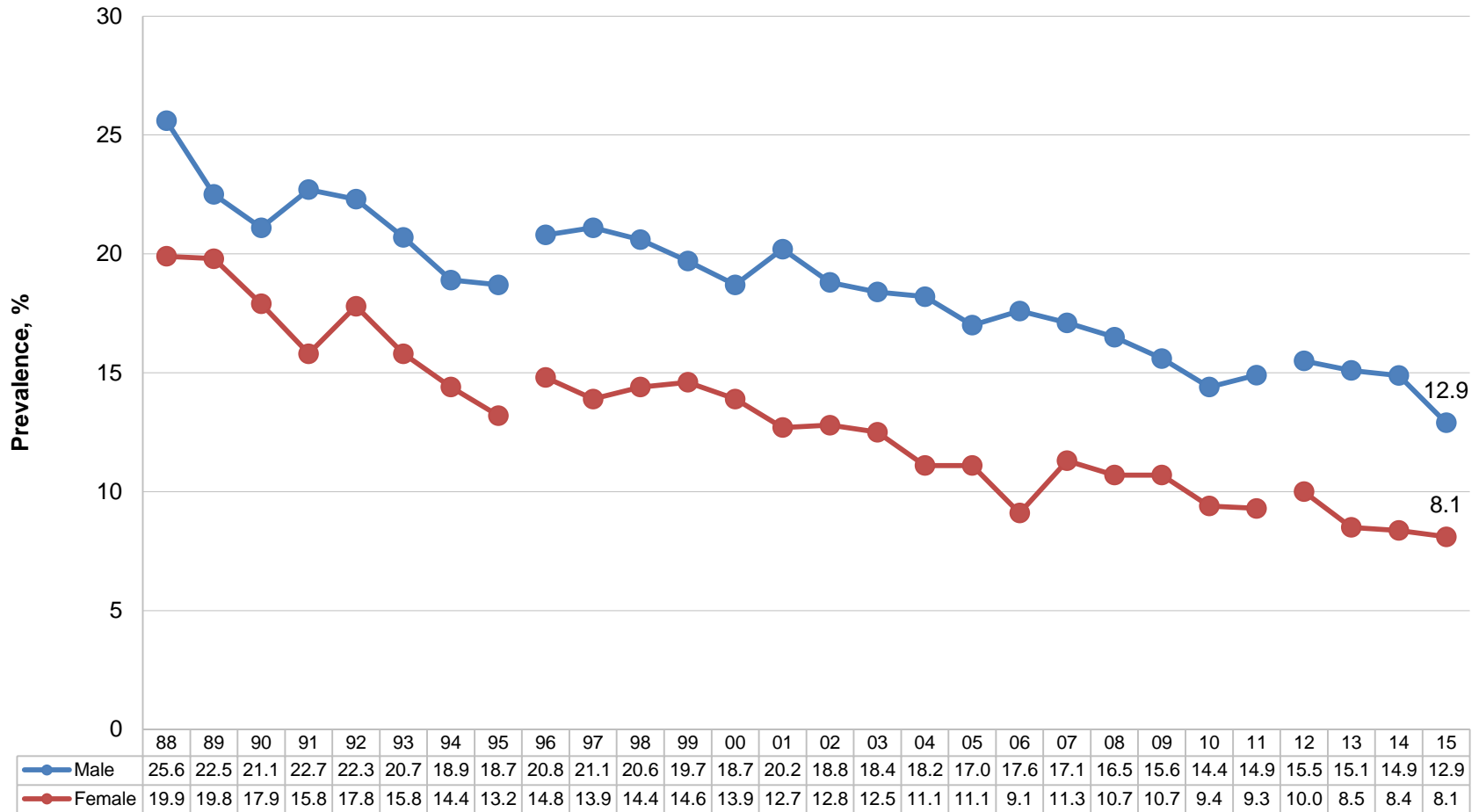


Source: Behavioral Risk Factor Surveillance System, 1988–2015.

Note: Respondents aged 18+ were asked to report current cigarette smoking behavior. An adjustment was made to address the change of smoking definition in 1996 that included more occasional smokers. The weighting methodology changed in 2012 for California but changed for the rest of the United States in 2011. Weighted to the 2000 California population from 1988–2011 and to the 2010 California population since 2012. The U.S. estimate does not include California adults.



California Adult Cigarette Smoking Prevalence by Gender, 1988-2015

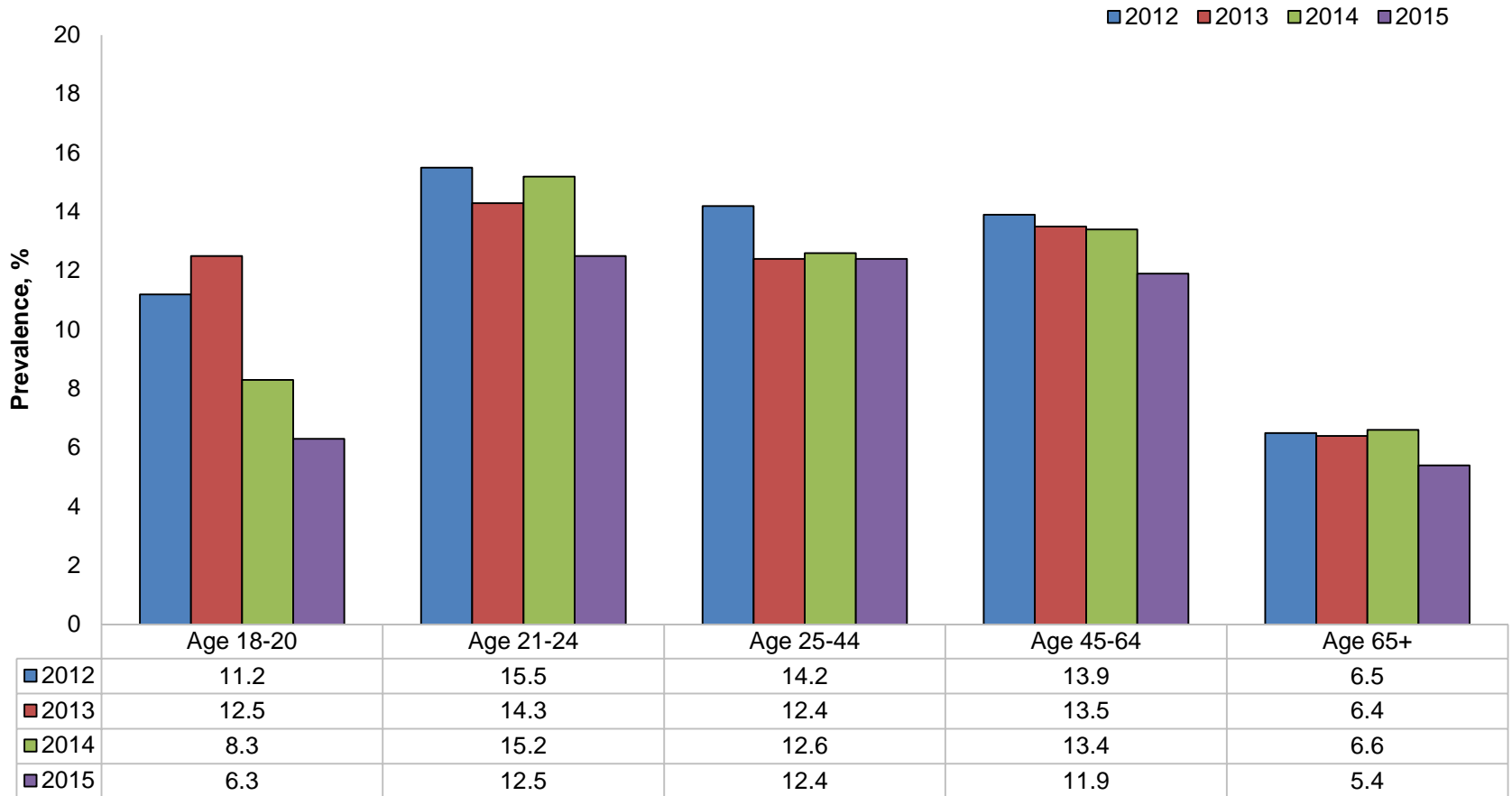


Source: Behavioral Risk Factor Surveillance System, 1988–2015.

Note: Respondents aged 18+ were asked to report current cigarette smoking behavior. An adjustment was made to address the change of smoking definition in 1996 that included more occasional smokers. The weighting methodology changed in 2012. Weighted to the 2000 California population from 1988–2011 and to the 2010 California population since 2012.



California Adult Cigarette Smoking Prevalence by Age Groups, 2012-2015

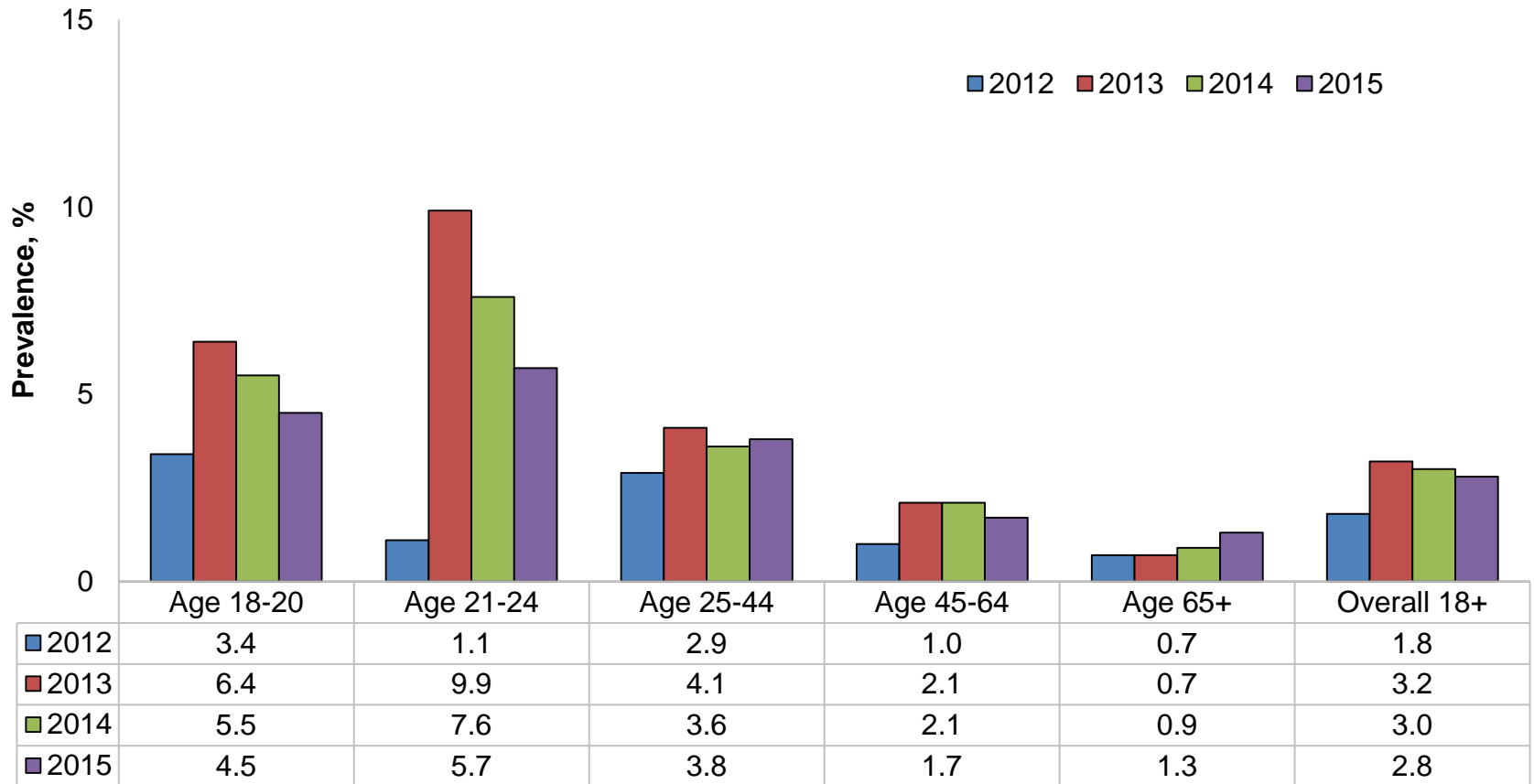


Note: Respondents aged 18+ were asked to report current cigarette smoking behavior. Weighted to the 2010 California population.

Source: Behavioral Risk Factor Surveillance System, 2012–2015.



California E-Cigarette Smoking Prevalence Overall and by Age Groups, 2012-2015

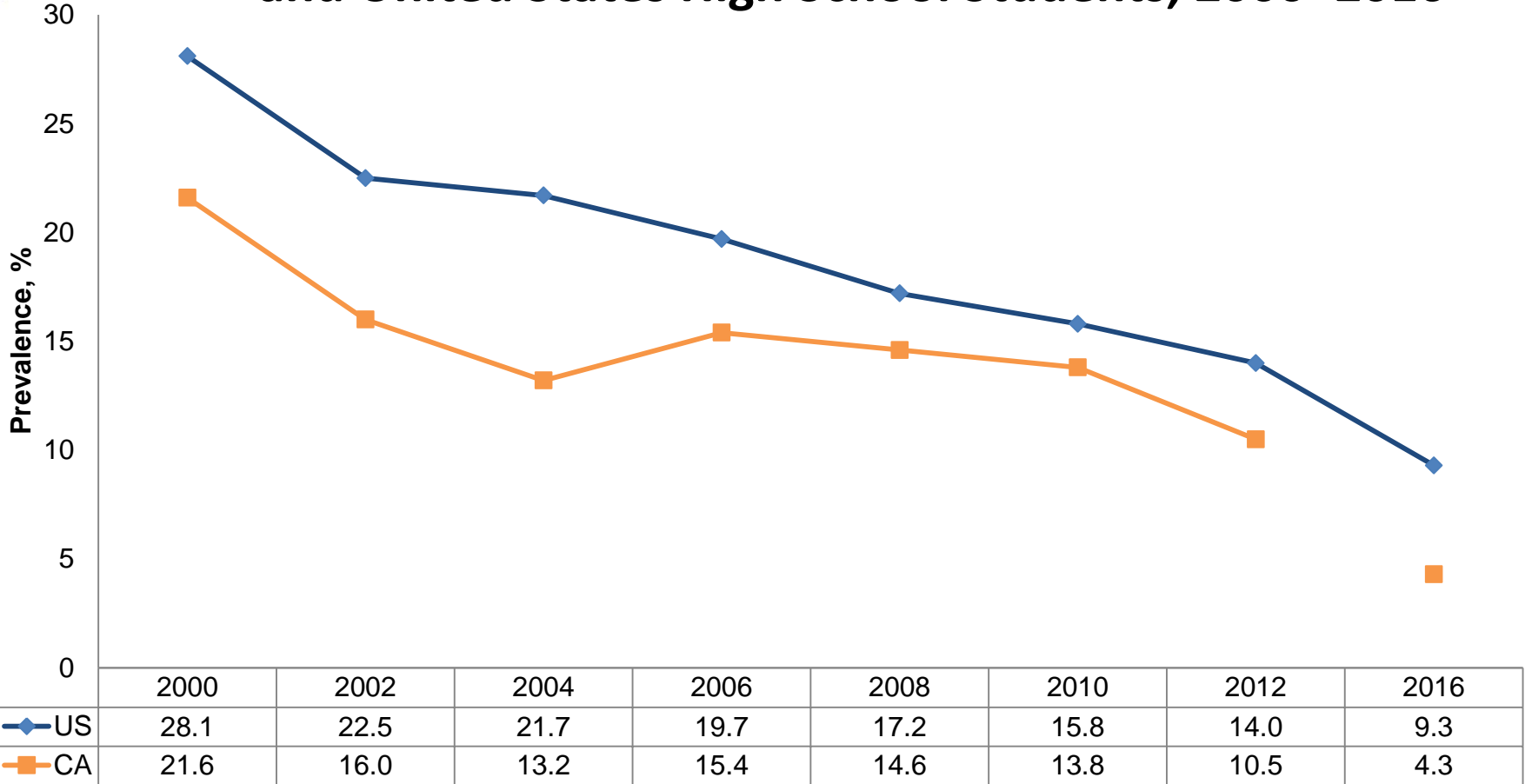


Source: Behavioral Risk Factor Surveillance System, 2012–2015.

Note: Respondents aged 18+ were asked to report current e-cigarette smoking behavior. Weighted to the 2010 California population.



Past 30-day Cigarette Smoking Prevalence for California and United States High School Students, 2000–2016

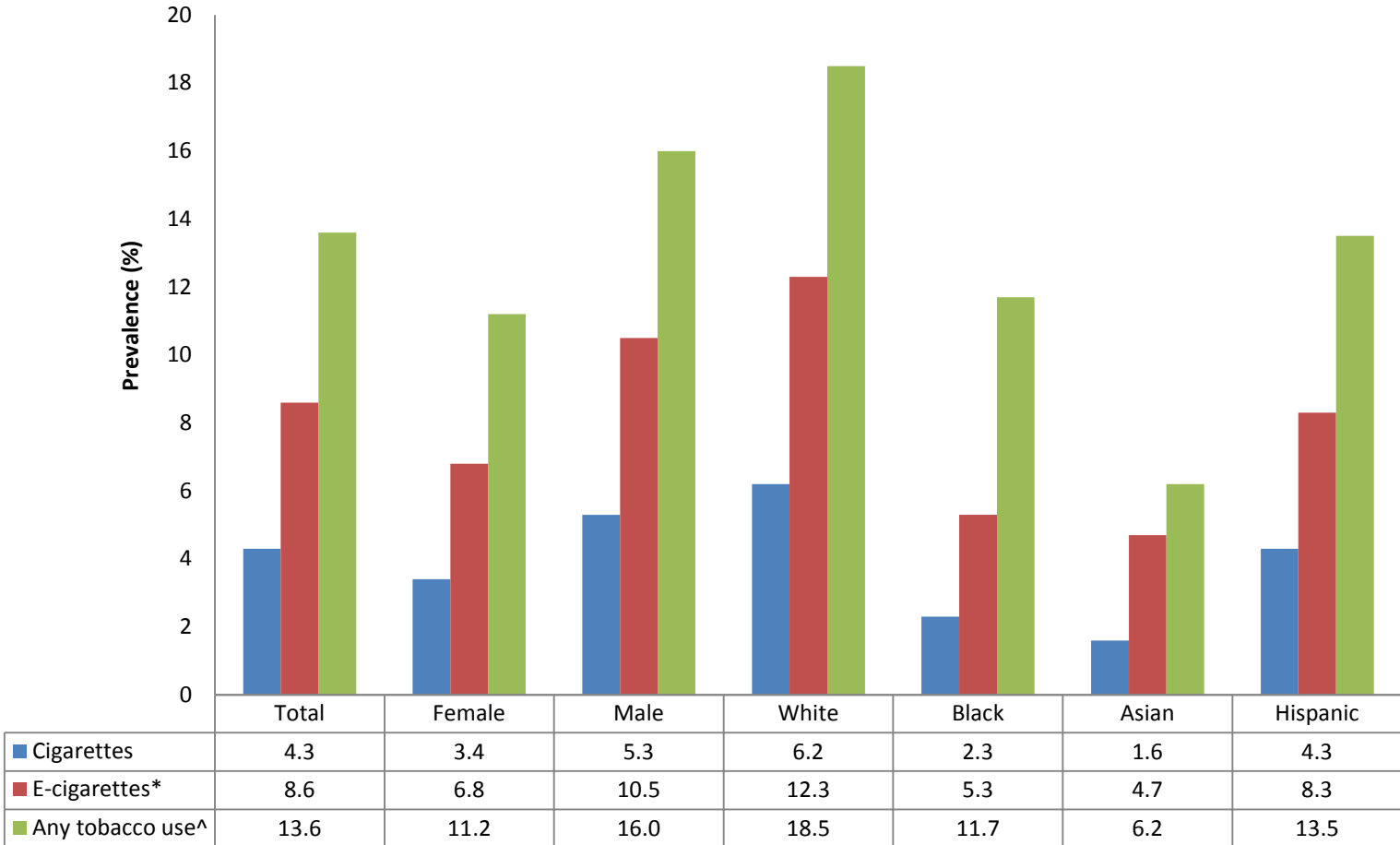


Source: National Youth Tobacco Survey, 2000–2015 (US data; 2016 US prevalence is based on 2015 National Youth Tobacco Survey data); National Youth Tobacco Survey, 2000 (CA data); California Student Tobacco Survey, 2002–2016.

Notes: Respondents were asked to report past 30-day cigarette smoking behavior. The survey methodology was changed in California in 2016.



Tobacco Use among California High School Students in 2016, by Gender and Race/Ethnicity

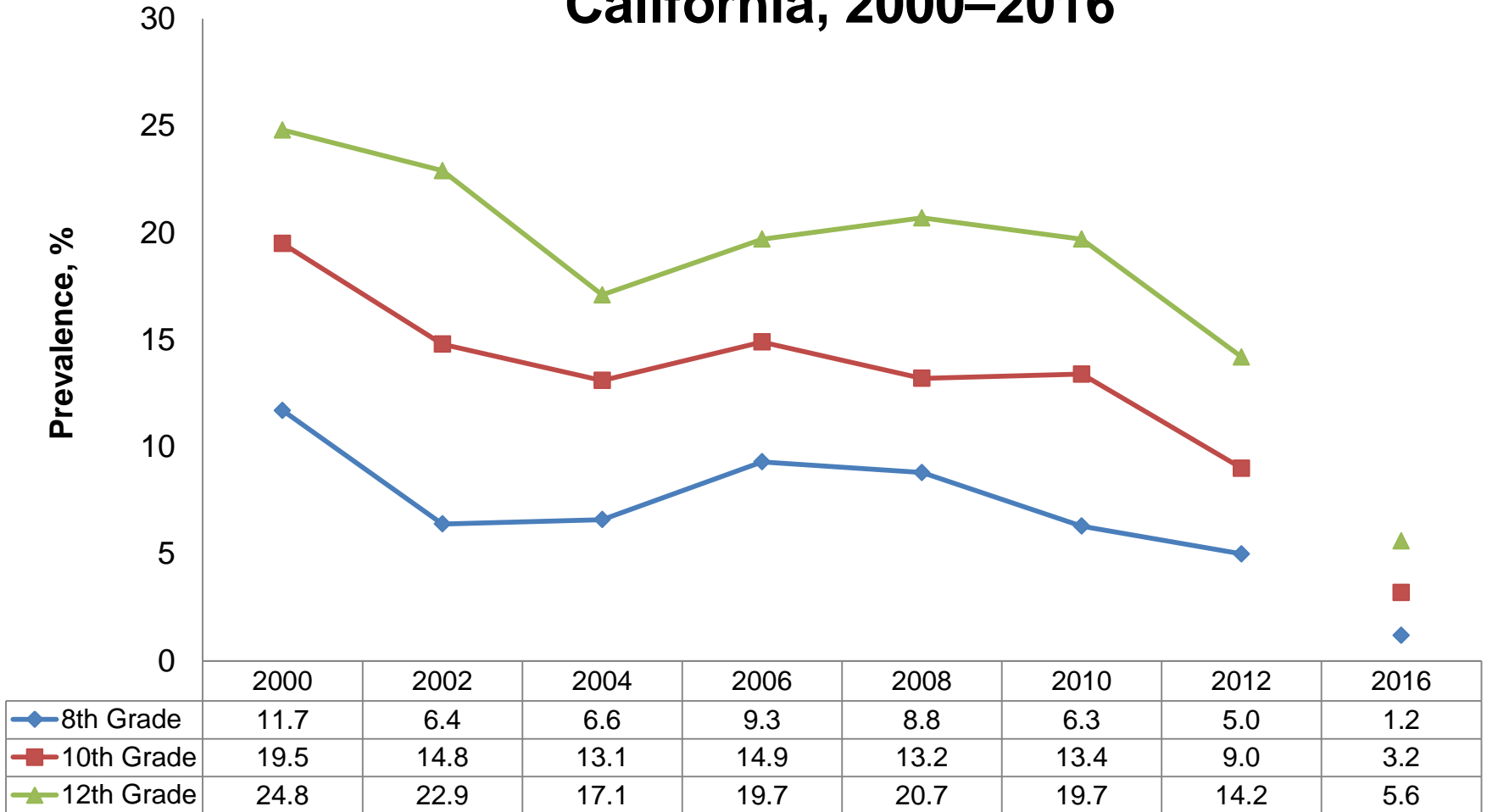


* E-cigarettes include cigalike, vapes, vape pens, e-hookah, hookah pens, tanks or mods;

^ Any tobacco product use is "Have used any product of cigarettes, little cigars or cigarillos, kreteks, big cigars, hookah, smokeless tobacco, e-cigarette in the past 30 days".



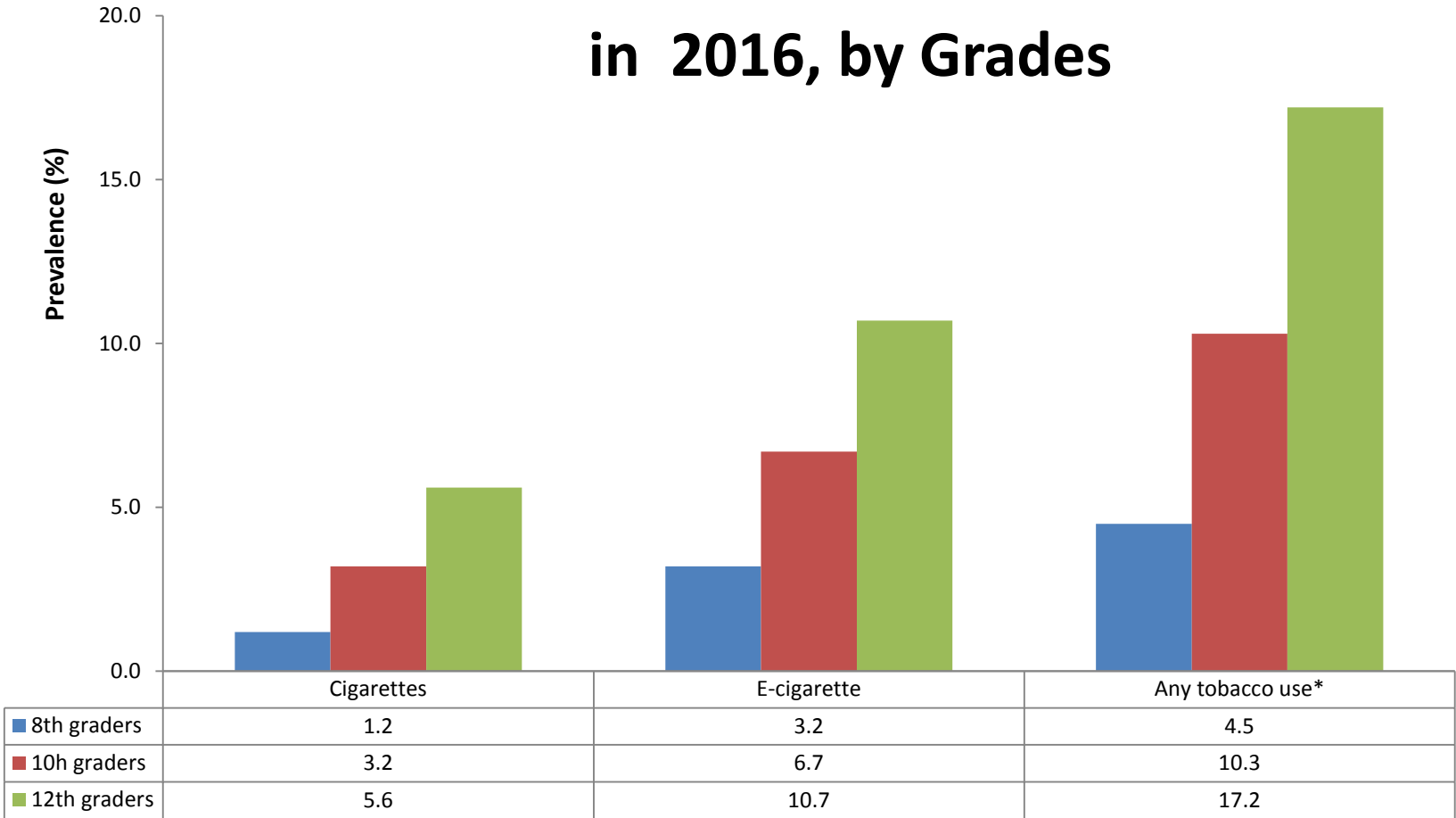
Past 30-day cigarette smoking prevalence among 8th, 10th, and 12th graders in California, 2000–2016



Notes: Respondents were asked to report past 30-day cigarette smoking behavior. The survey methodology was changed in California in 2016.
 Source: California Student Tobacco Survey, 2002–2016.



Tobacco Use among California High and Middle School Students in 2016, by Grades



* E-cigarettes include cigalike, vapes, vape pens, e-hookah, hookah pens, tanks or mods;

^ Any tobacco product use is "Have used any product of cigarettes, little cigars or cigarillos, kreteks, big cigars, hookah, smokeless tobacco, e-cigarette in the past 30 days".

Source: California Student Tobacco Survey, 2016



Tobacco Use among California High School Students by region, 2016

Region	Tobacco use Prevalence (%)
Los Angeles	10.7 (9.6-11.8)
San Diego	12.8 (11.3-14.3)
Orange	15.9 (14.4-17.5)
Santa Clara, Alameda	15.9 (14.4-17.5)
San Bernardino	15.8 (12.1-19.5)
Riverside	12.8 (11.6-14.0)
Contra Costa, Marin, San Francisco, San Mateo, Solano	12.6 (11.1-14.0)
Fresno, Imperial, Kern, Kings, Madera, Mariposa, Merced, Tulare	15.4 (13.8-16.9)
Alpine, Amador, Butte, Calaveras, Colusa, Del Norte, El Dorado, Glenn, Humboldt, Inyo, Lake, Lassen, Mendocino, Modoc, Mono, Napa, Nevada, Placer, Plumas, Shasta, Sierra, Siskiyou, Sonoma, Sutter, Tehama, Trinity, Tuolumne	22.7 (20.2-25.2)
Sacramento, San Joaquin, Stanislaus, Yolo, Yuba	14.6 (13.5-15.7)
Monterey, San Benito, San Luis Obispo, Santa Barbara, Santa Cruz, Ventura	14.8 (13.5-16.2)

Any tobacco product use is "Have used any product of cigarettes, little cigars or cigarillos, kreteks, big cigars, hookah, smokeless tobacco, e-cigarette in the past 30 days".

Source: California Student Tobacco Survey, 2016