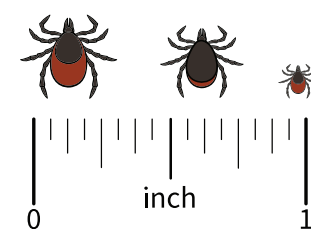
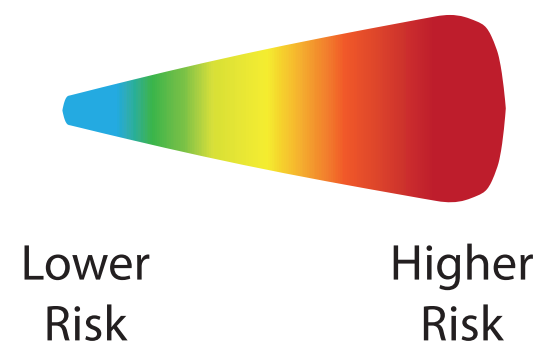
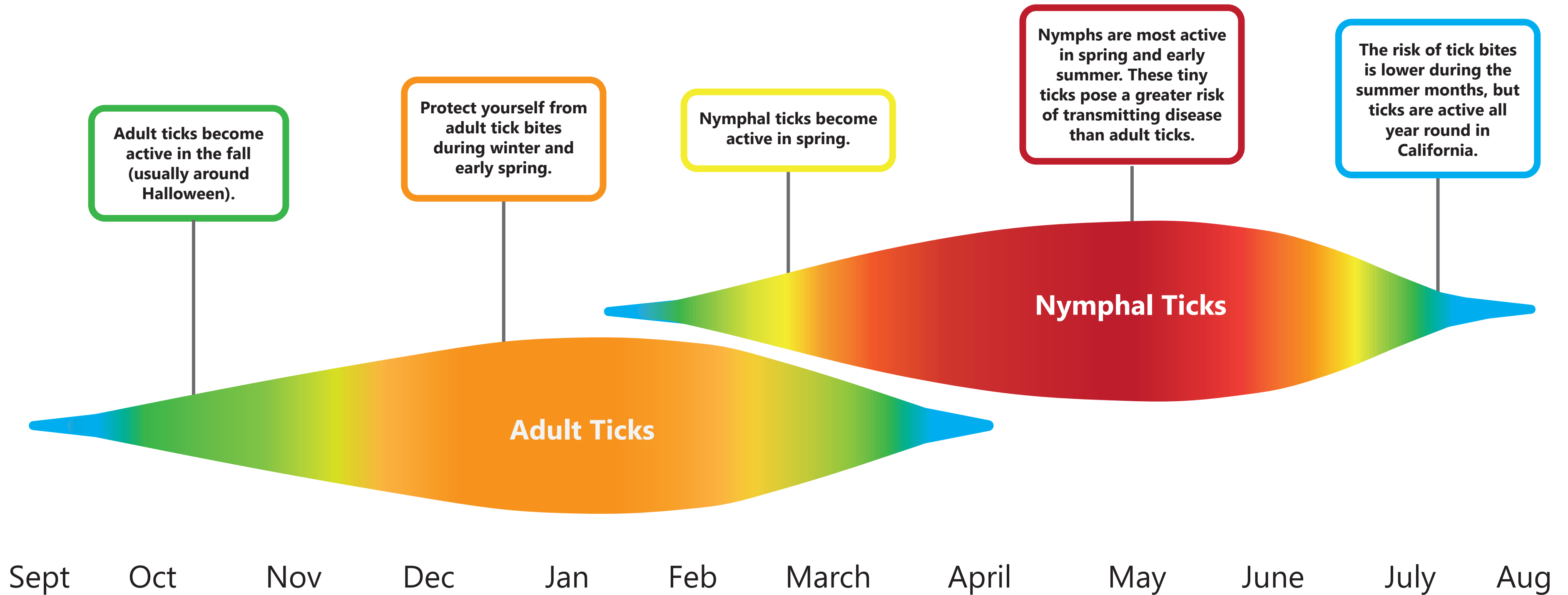


Seasonal Risk of Exposure to Infected Western Blacklegged (*Ixodes pacificus*) Ticks in California

- Western blacklegged ticks can transmit the bacteria that cause Lyme disease
- Nymphal (immature) ticks pose a higher risk of disease transmission than adult ticks
- Risk of exposure varies throughout California



Size of adult female (left), adult male (middle), and nymphal (right) ticks