

ADULT SMOKING PREVALENCE

California Department of Public Health
California Tobacco Control Program
cdph.ca.gov/programs/Tobacco

The prevalence of adult smoking has declined steadily in California from 24.9% in 1984 to 13.3% in 2008 as measured by both the Behavioral Risk Factor Surveillance System (BRFSS) and the California Adult Tobacco Survey (CATS).

Adult Prevalence

- The California adult smoking prevalence was 13.3% in 2008.
- The adult smoking prevalence declined by more than 40% from 22.7% to 13.3% since the passage of Proposition 99 in the 1988.
- In 2008, there were approximately 3.6 million current adult smokers in California.

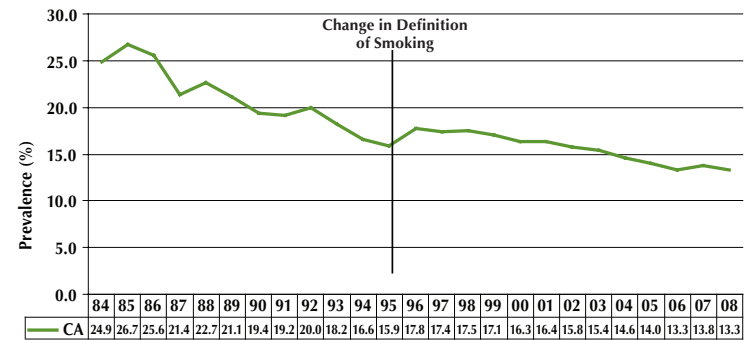
Adult Prevalence by Age Group

- Adult smoking prevalence was highest at 17.6% among the 18-24 age group, and lowest at 6.9% among the 65+ age group in 2008.
- For the 18-24 age group, smoking prevalence increased from 14.9% in 1994, peaking at 22.4% in 2001, and then decreased to 17.6% in 2008.
- For the 25-44 and 45-64 age groups, smoking prevalence decreased slowly but steadily.
- The 65+ age group always had the lowest smoking prevalence. Smoking prevalence declined steadily from 10.7% in 1994 to 6.9% in 2008.

Adult Prevalence by Gender

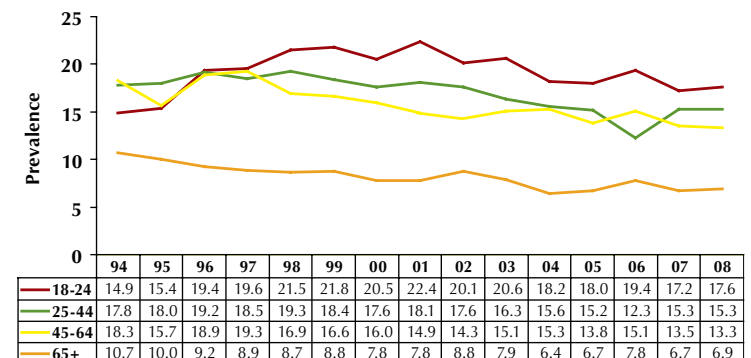
- In 2008, the California adult smoking prevalence was 16.5% and 10.6% for men and women, respectively. Men have had a consistently higher smoking prevalence than women.
- The prevalence of smoking among men and women had similar trends; however, the decline in women smoking rates was greater than that observed in men (54.0% vs. 41.3%).

Smoking Prevalence Among California Adults, 1984-2008



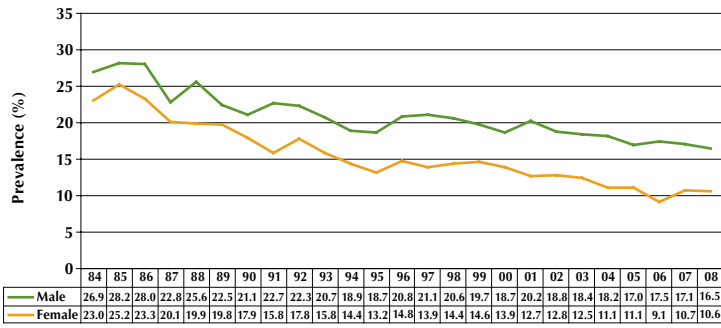
Source: Behavioral Risk Factor Surveillance System (BRFSS) 1984-1992, BRFSS and California Adult Tobacco Survey data is combined for 1993-2008. The data is weighted to the 2000 California population. Note change of smoking definition in 1996 that included more occasional smokers. Prepared by: California Department of Public Health, California Tobacco Control Program, March 2009.

Smoking Prevalence Among California Adults by Age Group, 1994-2008



Source: Behavioral Risk Factor Surveillance System (BRFSS) 1984-1992, BRFSS and California Adult Tobacco Survey data is combined for 1993-2008. The data is weighted to the 2000 California population. Note change of smoking definition in 1996 that included more occasional smokers. Prepared by: California Department of Public Health, California Tobacco Control Program, March 2009.

Smoking Prevalence Among California Adults by Gender, 1984-2008



Source: Behavioral Risk Factor Surveillance System (BRFSS) 1984-1992, BRFSS and California Adult Tobacco Survey data is combined for 1993-2008. The data is weighted to the 2000 California population. Note change of smoking definition in 1996 that included more occasional smokers.
Prepared by: California Department of Public Health, California Tobacco Control Program, March 2009.

Adult Prevalence by Race/Ethnicity

- Although African Americans comprise a smaller proportion of California’s race/ethnic groups, they have consistently had the highest adult smoking prevalence since 1990. In 2005, African American men and women had the highest adult smoking prevalence, 21.3% and 17.1%, respectively.
- In contrast, the Asian/Pacific Islander community has consistently had the lowest adult smoking prevalence, regardless of gender. Asian/Pacific Islander men (14.9%) and women (5.3%) had the lowest adult smoking prevalence in 2005.
- Since 1990, adult smoking rates have decreased in both genders for all race/ethnic groups, with the exception of African American women. Adult smoking rates slightly increased from 16.9 in 2002 to 17.4 in 2005 for African-American women.
- The greatest percentage decline in adult smoking prevalence was observed among white women from 20.8% in 1990 to 13.8% in 2005 and among African American men from 28% in 1990 to 21.3% in 2005.
- The smoking prevalence among Asian and Hispanic women were significantly lower than the rates of men in the same race/ethnic group even though smoking rates declined by a greater percentage in men than in women for the same race/ethnic groups.

About the Surveys

The BRFSS (1984-present) and the CATS (1994-present) are state-wide surveys conducted annually by the Computer Assisted Telephone Interviewing Unit of the Cancer Surveillance Section of the CDPH. Both surveys results in a combined sample size of more than 10,000 adults. Data have been weighted to the 2000 California population using gender, four race groups, and two age groups.

The CTS survey is a telephone survey conducted triennially by the Cancer Prevention and Control Program of the University of California, San Diego. It began in 1990 and is funded by the TCP of the CDPH. Data have been weighted to the 2000 California population using gender, four race groups and two age groups.

Adult Smoking Prevalence in California by Race/Ethnicity and Gender, 1990-2005

	1990	1993	1996	1999	2002	2005
Male						
African American	28.0	23.7	23.1	22.7	21.8	21.3
Asian/Pacific Islander	20.2	18.0	17.9	18.2	17.2	14.9
Hispanic	22.3	20.7	18.1	19.4	18.2	16.0
Non-Hispanic White	23.2	22.1	20.8	21.2	19.8	17.2
Female						
African American	22.6	18.4	19.2	16.1	16.9	17.4
Asian/Pacific Islander	8.1	6.6	6.9	7.7	6.4	5.3
Hispanic	11.8	9.6	8.9	9.2	7.7	7.2
Non-Hispanic White	20.8	19.5	17.9	17.8	15.7	13.8

Source: California Tobacco Survey (CTS) 1990-2005, weighted to 2000 CA population.
Prepared by California Department of Public Health (CDPH), Tobacco Control Program (TCP), March 2009.

ADULT SMOKING PREVALENCE

California Department of Public Health
California Tobacco Control Program
P.O. Box 997377 MS 7206
Sacramento, CA 95899-7377

cdph.ca.gov/programs/Tobacco

March 2010