

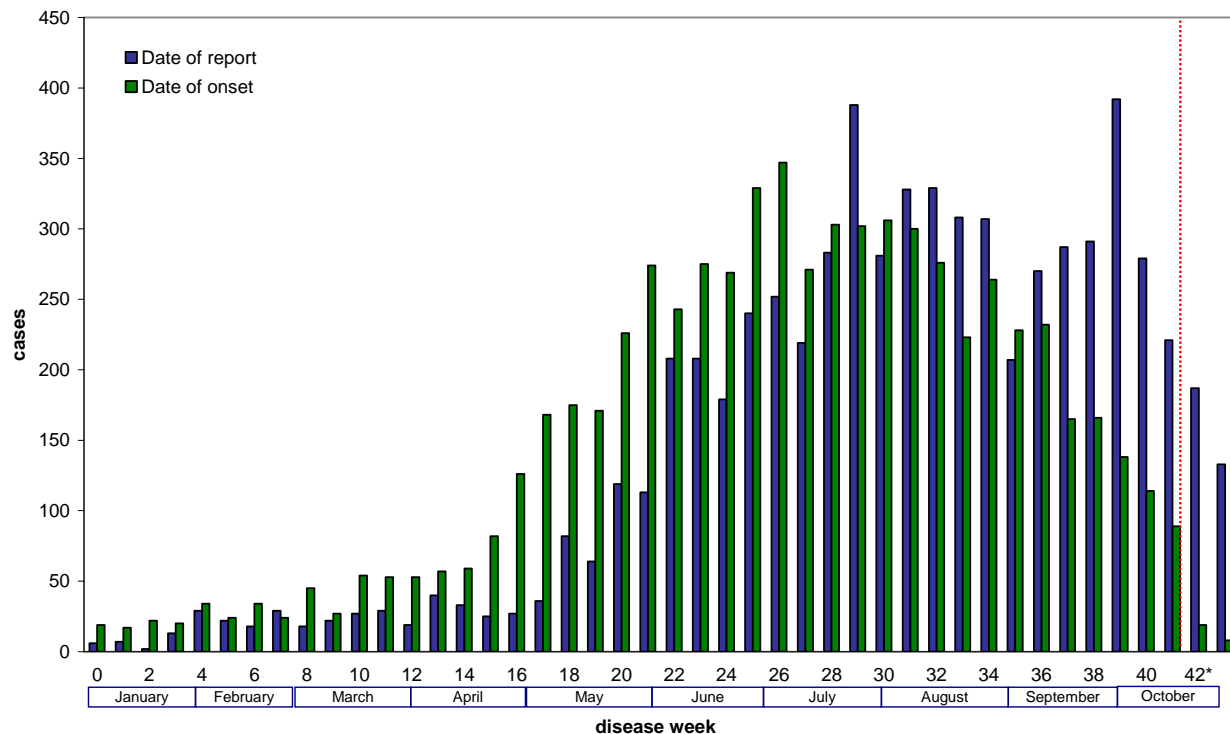


Pertussis Report

November 9, 2010

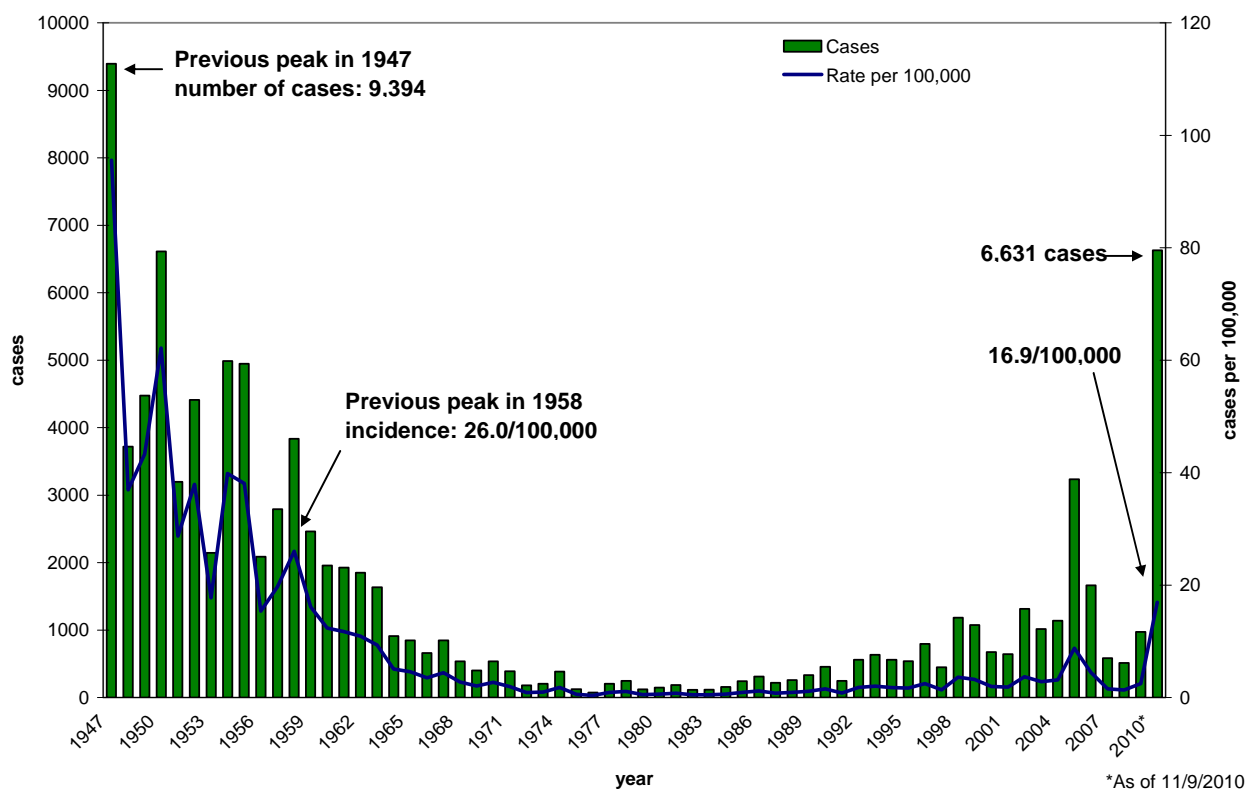
- **New in this report:** the number of pertussis cases reported to CDPH in 2010 has now surpassed the number reported in 1950 (6,613 cases, including 30 deaths).
- **6,631** confirmed, probable and suspect cases of pertussis with onset from January 1 through November 9, 2010 reported to CDPH for a state rate of **16.9 cases/100,000**.
 - 200 new cases have been reported to CDPH this week (Figure 1).
 - Case Classification:
 - Confirmed: ~63%
 - Probable: ~19%
 - Suspect: ~19%
- This is the most cases reported in 63 years when 9,394 cases were reported in 1947, a peak year, and the highest incidence in 52 years when a rate of 26.0 cases/100,000 was reported in 1958. Previously, the peak was in 2005 when there were 3,182 cases reported (Figure 2).
- Of the 40% of cases with known hospitalization information, 280 (11%) cases have been hospitalized
 - 163 (58%) of hospitalized cases were infants <3 months of age and 211 (75%) were infants <6 months of age.
 - 162 (77%) of the hospitalized infants <6 months of age with known race and ethnicity were Hispanic.
- Ten deaths have been reported; 9 (90%) were Hispanic infants. Nine fatalities were infants <2 months of age at time of disease onset and had not received any doses of pertussis-containing vaccine and the remainder was an ex-28 week preemie that was 2 months of age and had received the first dose of DTaP only 15 days prior to disease onset. The majority of infant cases in 2010 have occurred in infants <3 months of age (Figure 3).
- The case-fatality rate among infants <3 months of age is 1.7%.
- Rates are highest in infants <6 months of age (335.9 cases/100,000), in children aged 6 months to 6 years (40.9 cases/100,000), 7-9 years (49.8 cases/100,000) and adolescents aged 10-18 years (36.7 cases/100,000) (Figure 4). The majority of adolescent cases are in 10-11 year-olds.
- Overall rates by race/ethnicity are highest in Hispanics (17.5/100,000) and whites (14.5/100,000), however age-specific rates indicate that the highest rates are seen in Hispanic infants <6 months of age (414.9/100,000) (Figures 3 and 4).
- The median case rate by county is 14.4 cases per 100,000 (range 0-138) (Figure 5 and Table 1).

Figure 1. Epidemic curve of pertussis cases* by weeks of report and onset -- California, January 1 through November 9, 2010



*Includes cases residing in Los Angeles County that were reported to the county public health department through week 41

Figure 2. Number of reported pertussis cases by year of onset -- California 1947-2010*



*As of 11/9/2010

Figure 3. Infant pertussis cases by age in months -- California, 2010*

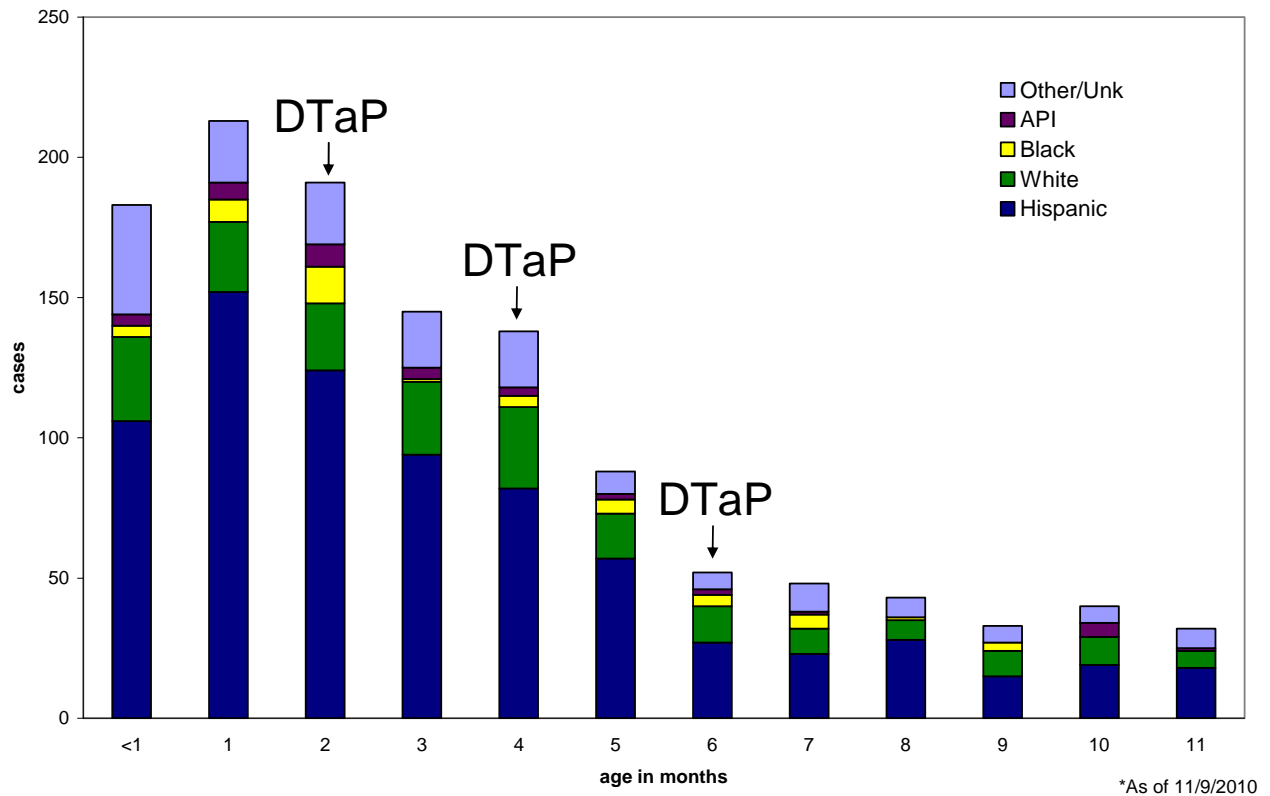


Figure 4. Incidence of pertussis cases by race/ethnicity and age -- California, 2010*

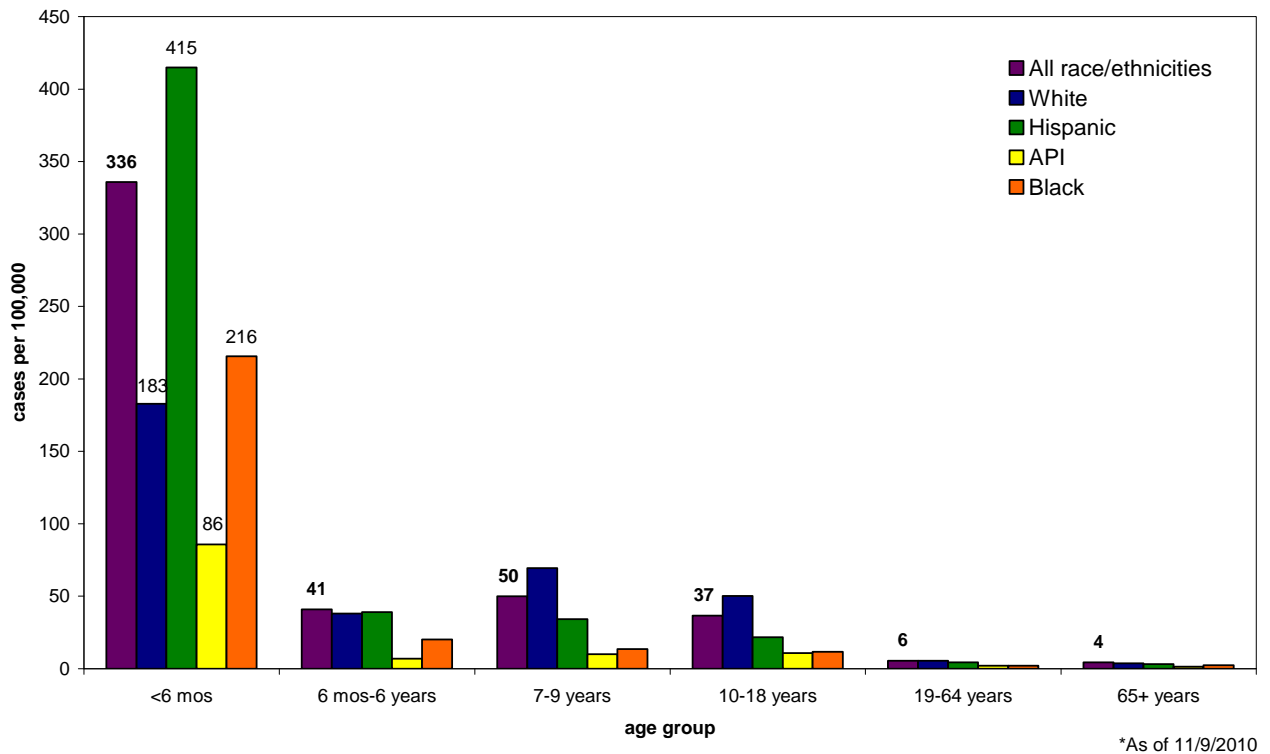
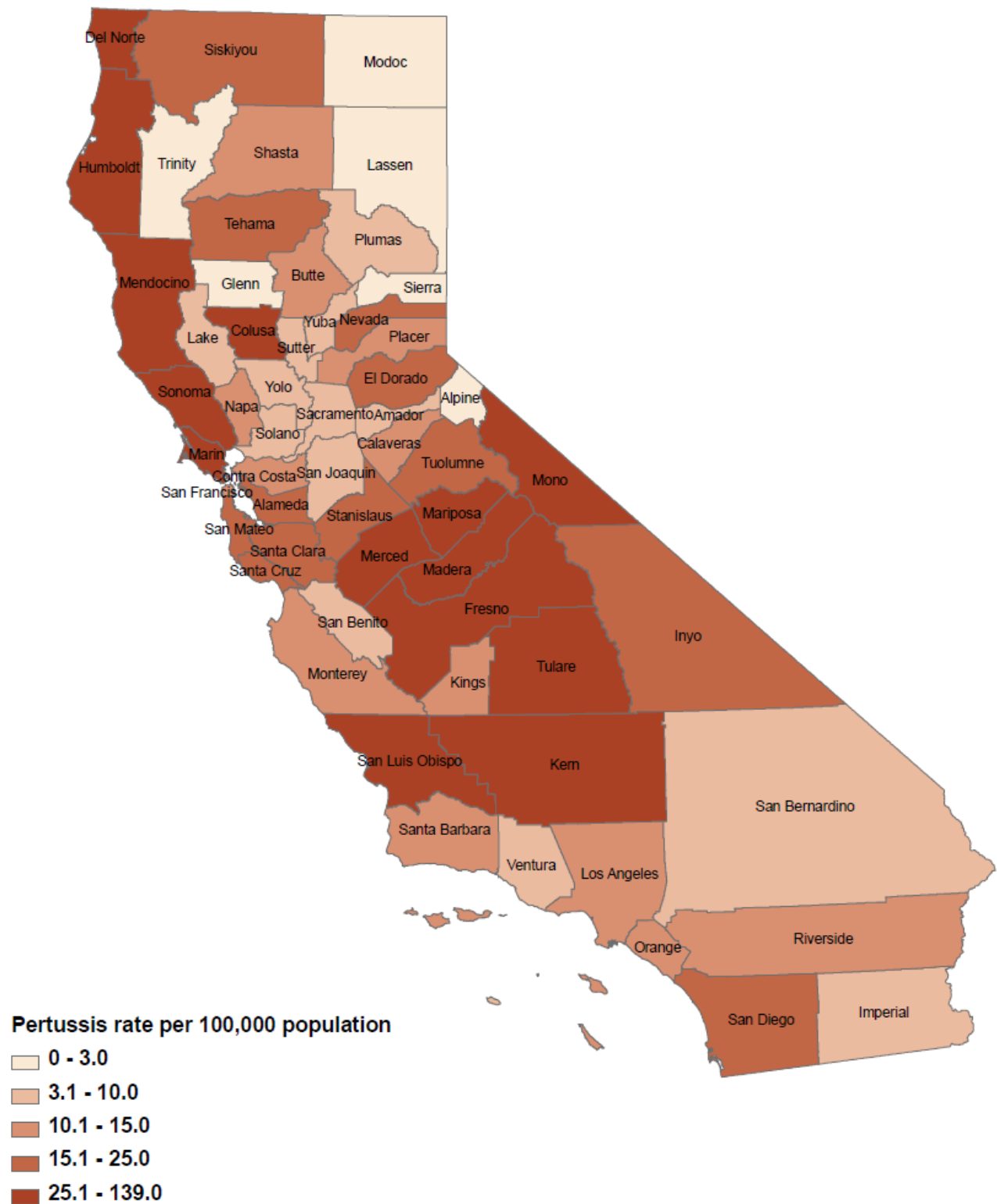


Figure 5. Pertussis rates by county – California, January 1 – November 9, 2010



**Table 1. Pertussis cases with onset from January 1 through November 9, 2010
reported to CDPH by local health jurisdiction -- California, 2010**

	2010	
	Cases	Rate
CALIFORNIA	6631	16.94
ALAMEDA	299	20.86
City of Berkeley*	12	11.20
ALPINE	0	0.00
AMADOR	3	7.53
BUTTE	29	12.79
CALAVERAS	7	14.83
COLUSA	11	47.20
CONTRA COSTA	153	14.37
DEL NORTE	16	52.23
EL DORADO	46	24.69
FRESNO	519	53.80
GLENN	0	0.00
HUMBOLDT	43	32.08
IMPERIAL	10	5.41
INYO	3	15.72
KERN	324	37.97
KINGS	19	11.80
LAKE	3	4.50
LASSEN	0	0.00
LOS ANGELES**	995	10.15
City of Long Beach*	64	12.99
City of Pasadena*	17	11.32
MADERA	121	76.46
MARIN	329	129.77
MARIPOSA	10	52.81
MENDOCINO	26	28.12
MERCED	116	43.33
MODOC	0	0.00
MONO	5	34.27
MONTEREY	54	12.55
NAPA	19	13.49
NEVADA	23	22.59
ORANGE	413	12.95
PLACER	51	14.97
PLUMAS	2	9.20
RIVERSIDE	304	13.95
SACRAMENTO	136	9.46
SAN BENITO	4	6.41
SAN BERNARDINO	102	4.77
SAN DIEGO	594	18.74
SAN FRANCISCO	105	12.90
SAN JOAQUIN	56	7.74
SAN LUIS OBISPO	371	138.45
SAN MATEO	135	18.39
SANTA BARBARA	64	14.86
SANTA CLARA	305	16.72
SANTA CRUZ	62	23.24
SHASTA	28	14.81
SIERRA	0	0.00
SISKIYOU	11	23.48
SOLANO	14	3.21
SONOMA	226	45.99
STANISLAUS	136	24.75
SUTTER	4	4.00
TEHAMA	11	17.02
TRINITY	0	0.00
TULARE	124	27.16
TUOLUMNE	9	15.40
VENTURA	65	7.68
YOLO	18	8.88
YUBA	5	6.37

*City health jurisdictions not included in county total

**Includes cases reported to LAC DPH as of 10/22/2010