



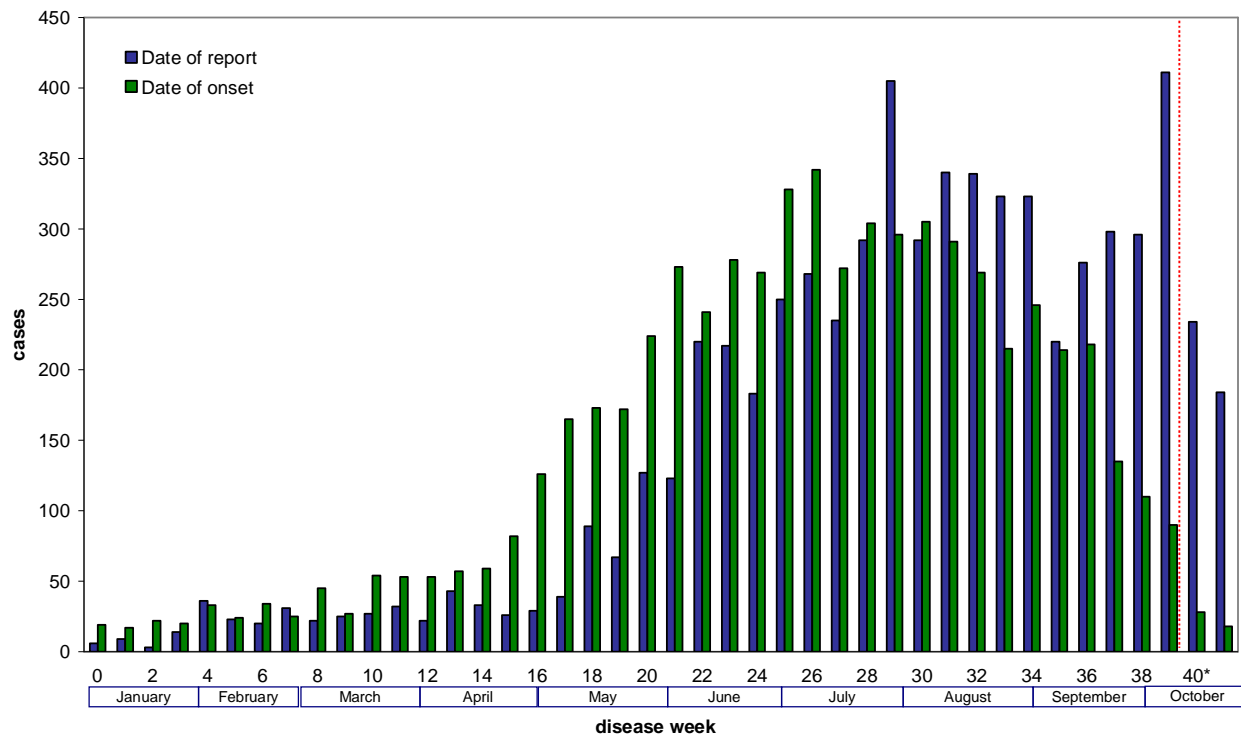
Pertussis Report^{*}

October 26, 2010

- As of 10/26/2010, there have been **6,257** confirmed, probable and suspect cases of pertussis with onset from January 1 through October 19, 2010 reported to CDPH for a state rate of **16.0 cases/100,000**.
 - 279 new cases have been reported to CDPH this week (Figure 1).
 - Case Classification:
 - Confirmed: ~67%
 - Probable: ~16%
 - Suspect: ~17%
- This is the most cases reported in 60 years when 6,613 cases were reported in 1950 and the highest incidence in 51 years when a rate of 16.1 cases/100,000 was reported in 1959. Previously, the peak was in 2005 when there were 3,182 cases reported (Figure 2).
- Of the 39% of cases with known hospitalization information, 267 (11%) cases have been hospitalized
 - 154 (58%) of hospitalized cases were infants <3 months of age and 201 (75%) were infants <6 months of age.
 - 153 (76%) of the hospitalized infants <6 months of age with known race and ethnicity were Hispanic.
- Ten deaths have been reported; 9 (90%) were Hispanic infants. Nine fatalities were infants <2 months of age at time of disease onset and had not received any doses of pertussis-containing vaccine and the remainder was an ex-28 week preemie that was 2 months of age and had received the first dose of DTaP only 15 days prior to disease onset. The majority of infant cases in 2010 have occurred in infants <3 months of age (Figure 3).
- Rates are highest in infants <6 months of age (317.2 cases/100,000), in children aged 6 months to 6 years (38.4 cases/100,000), 7-9 years (46.8 cases/100,000) and adolescents aged 10-18 years (34.5 cases/100,000) (Figure 4). The majority of adolescent cases are in 10-11 year-olds.
- Overall rates by race/ethnicity are highest in Hispanics (16.5/100,000) and whites (13.6/100,000), however age-specific rates indicate that the highest rates are seen in Hispanic infants <6 months of age (395.9/100,000) (Figures 3 and 4).
- The median case rate by county is 12.8 cases per 100,000 (range 0-137) (Figure 5 and Table 1).

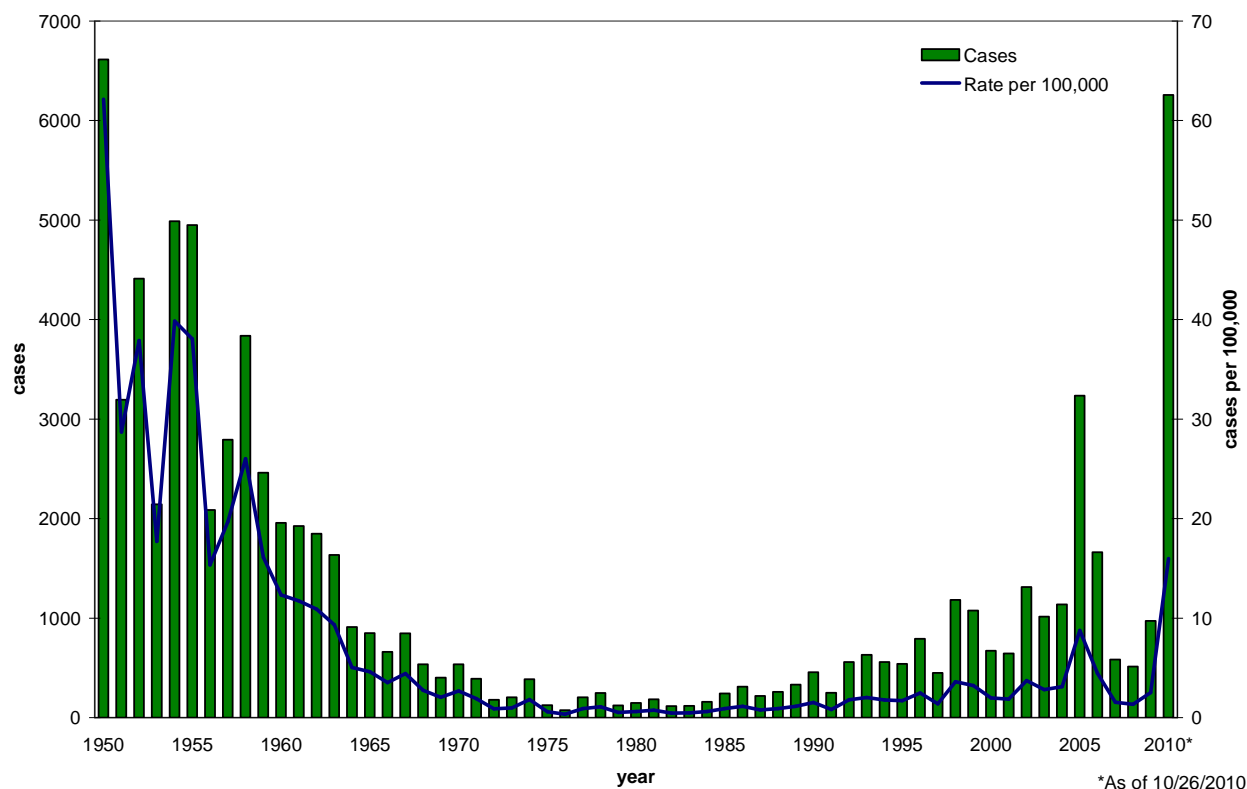
^{*} This report has been corrected from an earlier version

Figure 1. Epidemic curve of pertussis cases* by weeks of report and onset -- California, January 1 through October 26, 2010



*Includes cases residing in Los Angeles County that were reported to the county public health department through week 39

Figure 2. Number of reported pertussis cases by year of onset -- California 1950-2010*



*As of 10/26/2010

Figure 3. Infant pertussis cases by age in months -- California, 2010*

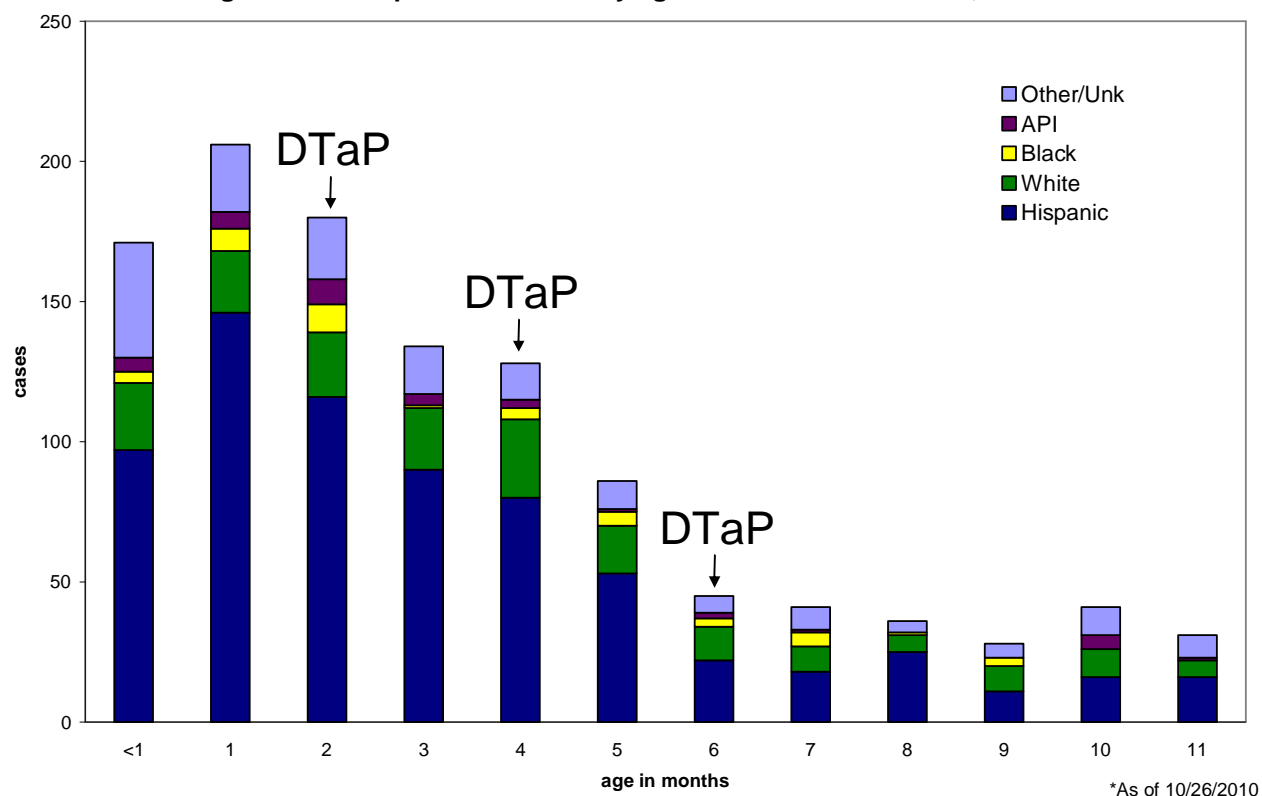


Figure 4. Incidence of pertussis cases by race/ethnicity and age -- California, 2010*

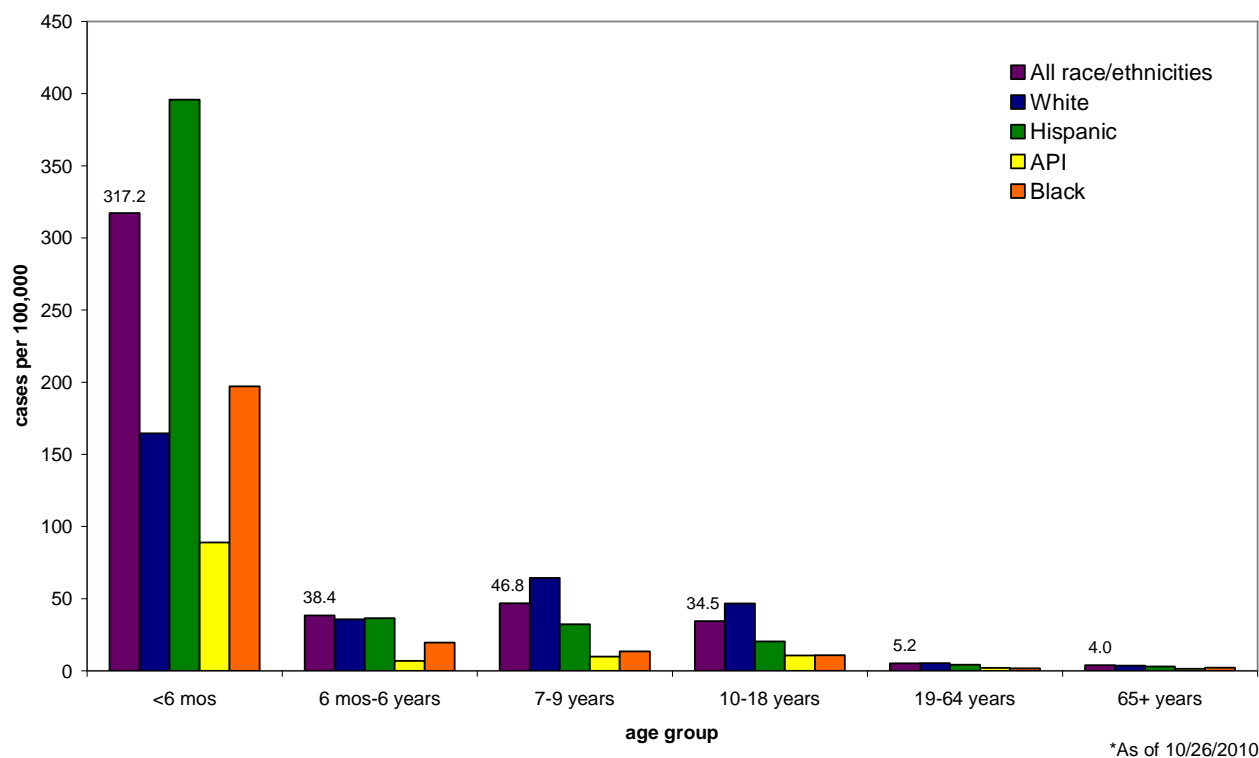
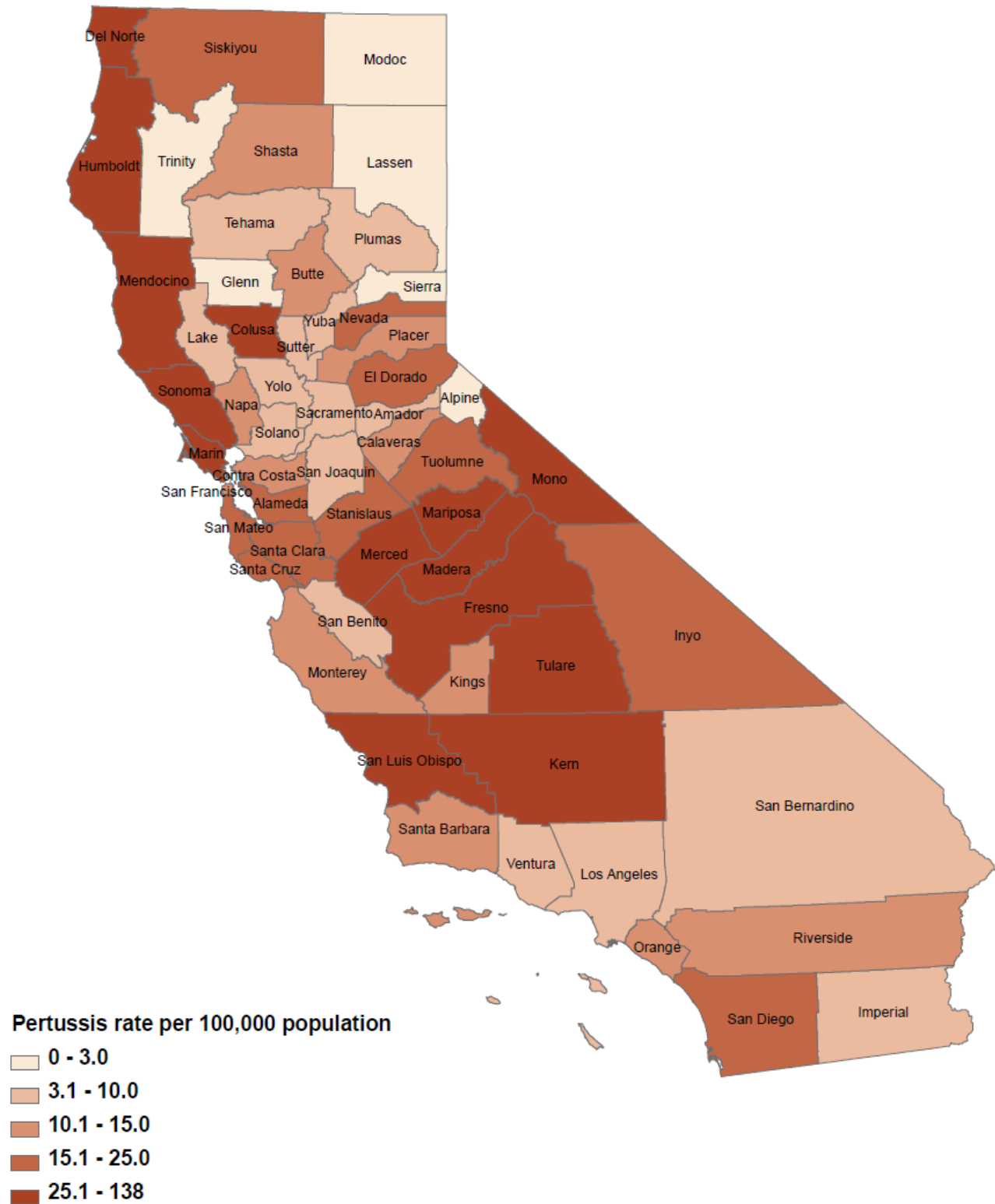


Figure 5. Pertussis rates by county – California, January 1 – October 26, 2010



**Table 1. Pertussis cases with onset from January 1 through October 26, 2010
reported to CDPH by local health jurisdiction -- California, 2010**

	2010	
	Cases	Rate
CALIFORNIA	6257	15.99
ALAMEDA	285	19.88
City of Berkeley*	11	10.26
ALPINE	0	0.00
AMADOR	3	7.53
BUTTE	29	12.79
CALAVERAS	7	14.83
COLUSA	11	47.20
CONTRA COSTA	135	12.68
DEL NORTE	16	52.23
EL DORADO	43	23.08
FRESNO	515	53.38
GLENN	0	0.00
HUMBOLDT	43	32.08
IMPERIAL	9	4.87
INYO	3	15.72
KERN	309	36.22
KINGS	18	11.18
LAKE	3	4.50
LASSEN	0	0.00
LOS ANGELES**	896	9.14
City of Long Beach*	64	12.99
City of Pasadena*	15	9.99
MADERA	116	73.30
MARIN	321	126.62
MARIPOSA	10	52.81
MENDOCINO	24	25.96
MERCED	109	40.72
MODOC	0	0.00
MONO	5	34.27
MONTEREY	51	11.85
NAPA	19	13.49
NEVADA	23	22.59
ORANGE	394	12.35
PLACER	50	14.68
PLUMAS	2	9.20
RIVERSIDE	270	12.39
SACRAMENTO	123	8.56
SAN BENITO	3	4.80
SAN BERNARDINO	91	4.26
SAN DIEGO	556	17.54
SAN FRANCISCO	94	11.54
SAN JOAQUIN	55	7.60
SAN LUIS OBISPO	369	137.71
SAN MATEO	123	16.75
SANTA BARBARA	64	14.86
SANTA CLARA	289	15.85
SANTA CRUZ	63	23.62
SHASTA	24	12.69
SIERRA	0	0.00
SISKIYOU	11	23.48
SOLANO	14	3.21
SONOMA	215	43.75
STANISLAUS	130	23.66
SUTTER	4	4.00
TEHAMA	6	9.28
TRINITY	0	0.00
TULARE	118	25.84
TUOLUMNE	9	15.40
VENTURA	65	7.68
YOLO	18	8.88
YUBA	4	5.10

*City health jurisdictions not included in county total

**Includes cases reported to LAC DPH as of 10/8/2010