

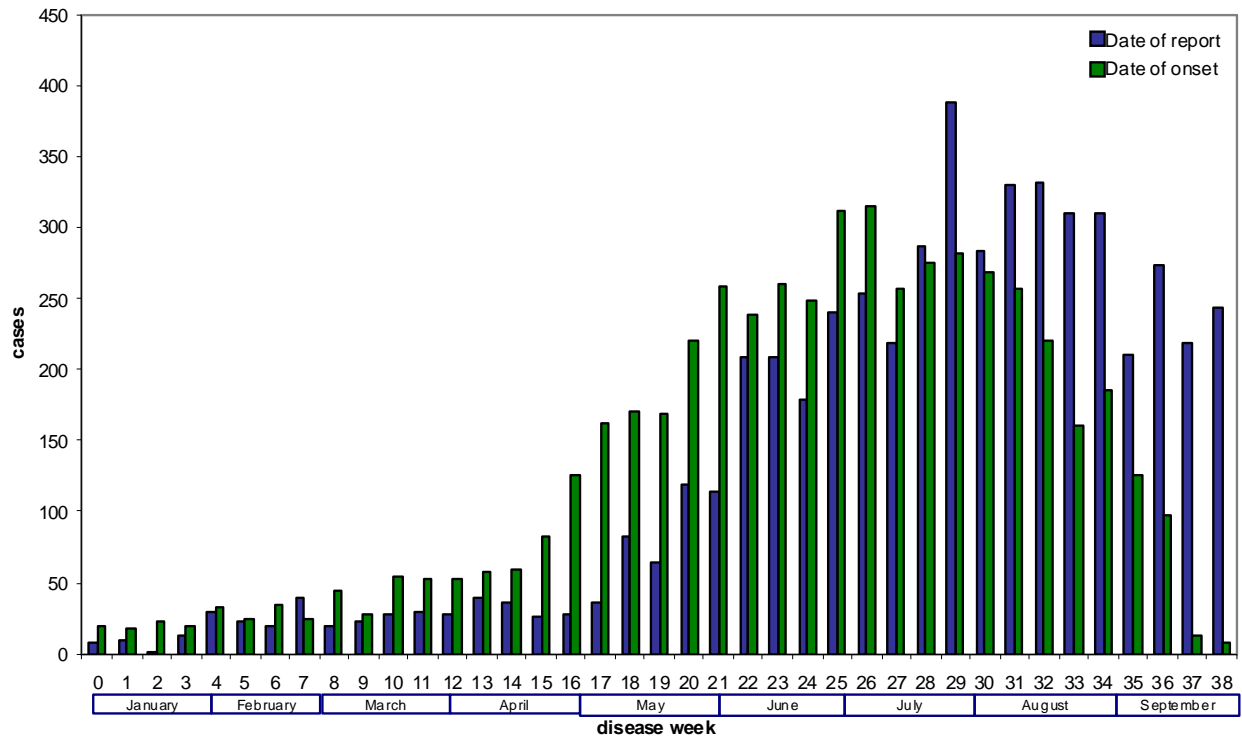
Pertussis Report*

10/6/2010

- As of 10/5/2010, there have been **5,272** confirmed, probable and suspect cases of pertussis reported in 2010 for a state rate of **13.5 cases/100,000**.
 - 5,249 of reported cases had disease onset in 2010.
 - 811 new cases have been reported to CDPH this week, however 595 of these are prior incident cases from Los Angeles County (Figure 1).
 - Case Classification:
 - Confirmed: ~66%
 - Probable: ~17%
 - Suspect: ~17%
- This is the most cases reported in 60 years when 6,613 cases were reported in 1950 and the highest incidence in 51 years when a rate of 16.1 cases/100,000 was reported in 1959. Previously, the peak was in 2005 when there were 3,182 cases reported (Figure 2).
- Of the 40% of cases with known hospitalization information - 225 (11%) cases have been hospitalized
 - 132 (59%) of hospitalized cases were infants <3 months of age and 167 (74%) were infants <6 months of age.
 - 129 (77%) of the hospitalized infants <6 months of age with known race and ethnicity were Hispanic.
- Nine deaths have been reported; 8 (89%) were Hispanic infants. Eight fatalities were infants <2 months of age at time of disease onset and had not received any doses of pertussis-containing vaccine and the remainder was an ex-28 week preemie that was 2 months of age and had received the first dose of DTaP only 15 days prior to disease onset. The majority of infant cases in 2010 have occurred in infants <3 months of age (Figure 3).
- Rates are highest in infants <6 months of age (261.3 cases/100,000), in children aged 7-9 years (40.2 cases/100,000) and adolescents aged 10-18 years (30.1 cases/100,000) (Figure 4). The majority of adolescent cases are in 10-11 year-olds
- Overall rates by race/ethnicity are highest in Hispanics (13.4/100,000) and whites (11.8/100,000), however age-specific rates indicate that the highest rates are seen in Hispanic infants <6 months of age (322.7/100,000) (Figures 3 and 4).
- The median case rate by county is 10.5 cases per 100,000 (range 0-136) (Figure 5 and Table 1).

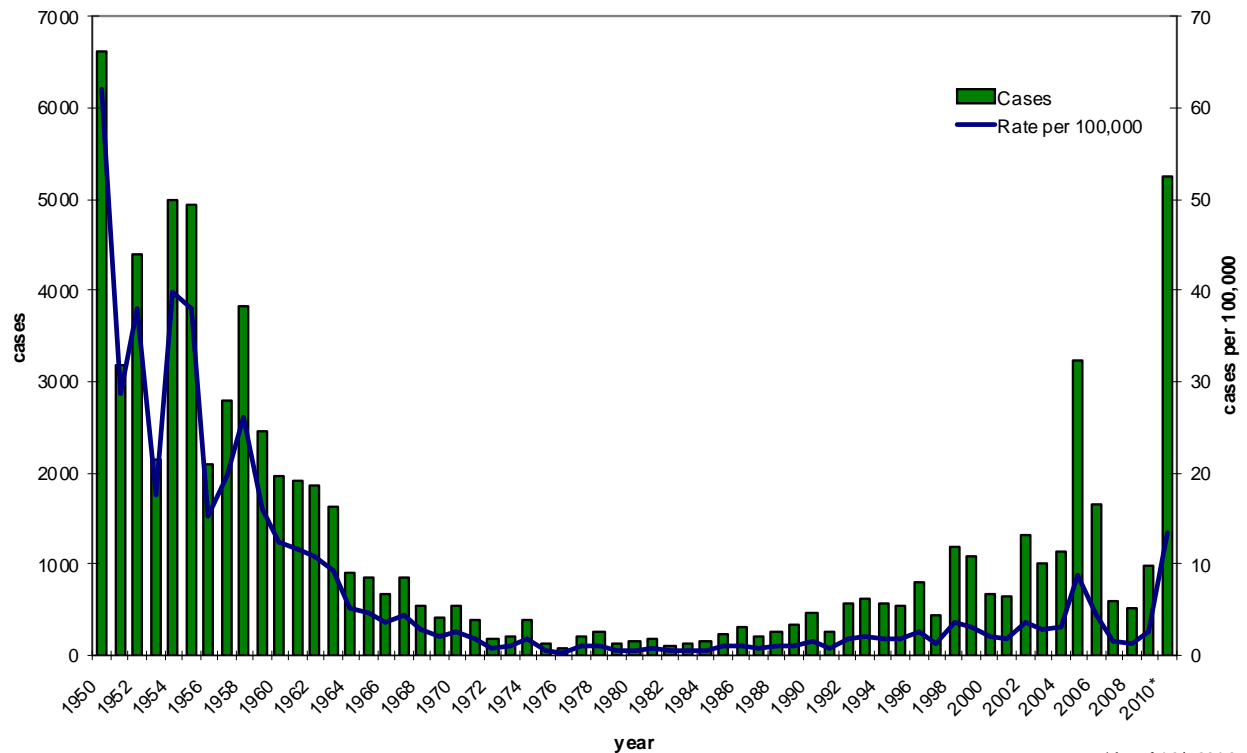
* This report has been correction from the prior versions

Figure 1. Epidemic curve of pertussis cases* by weeks of report and onset -- California, January 1 through October 5, 2010



*Includes cases residing in Los Angeles County that were reported to the county public health department from Jan 1- Sep 17, 2010

Figure 2. Number of reported pertussis cases by year of onset -- California 1950-2010*



*As of 10/5/2010

Figure 3. Infant pertussis cases by age in months -- California, 2010*

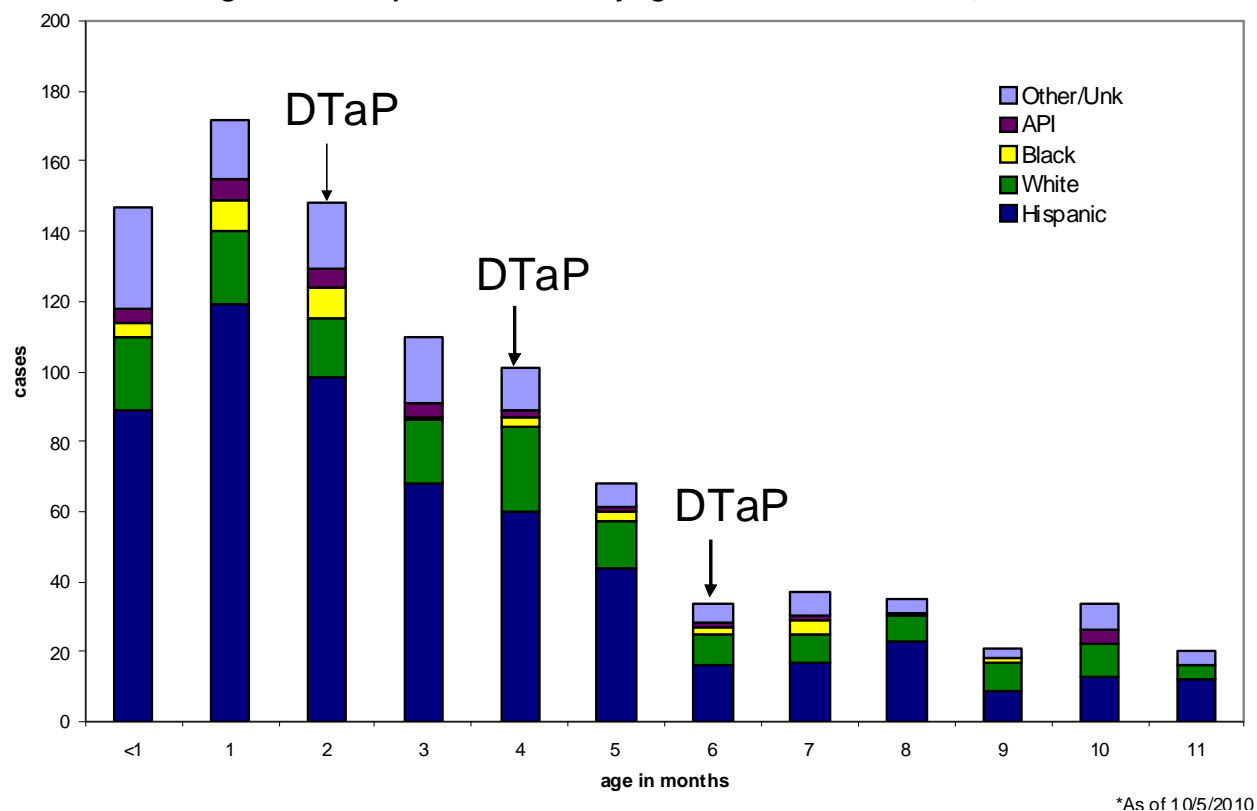


Figure 4. Incidence of pertussis cases by race/ethnicity and age – California, 2010*

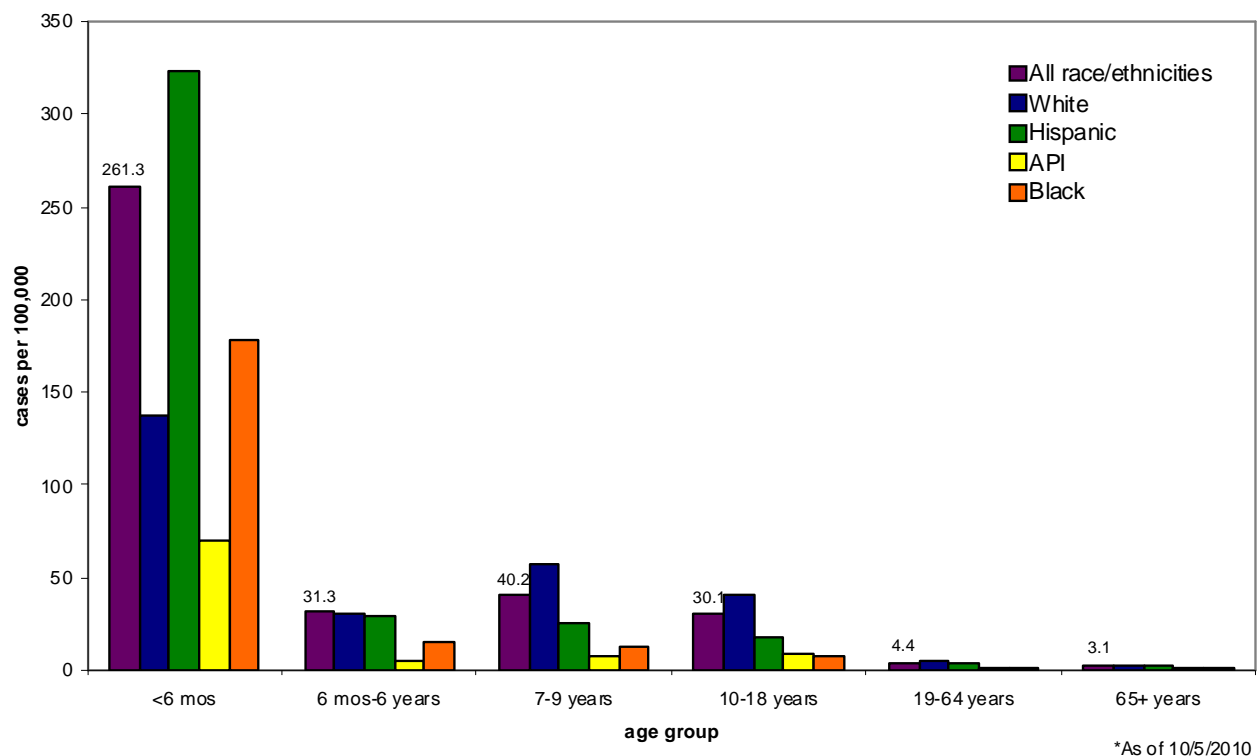


Figure 5. Pertussis rates by county – California, January 1 – October 5, 2010

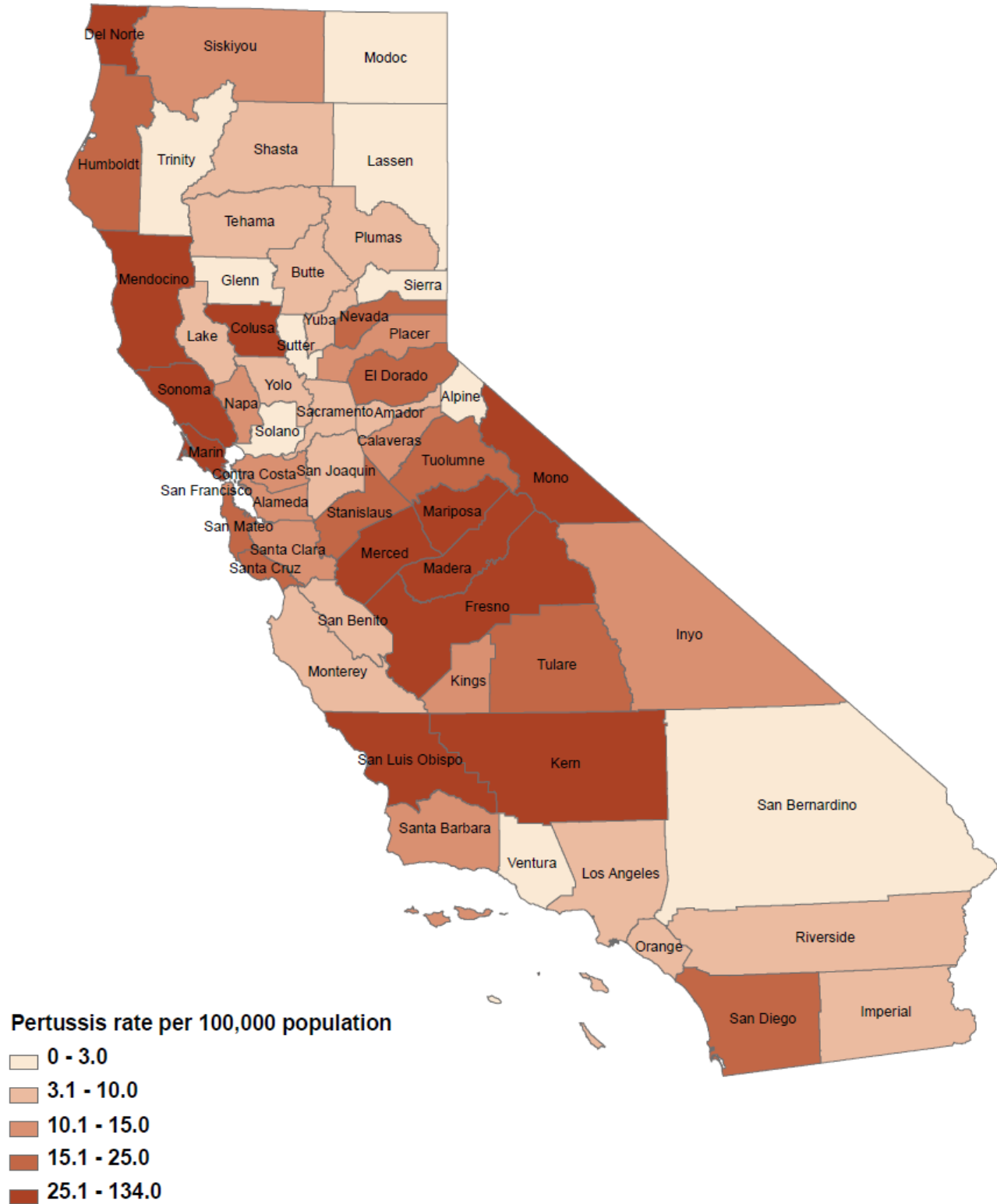


Table 1. Pertussis cases reported to CDPH from January 1 through October 5 by local health jurisdiction -- California, 2010

	2010	
	Cases	Rate
CALIFORNIA	5272	13.47
ALAMEDA	221	15.42
City of Berkeley*	9	8.40
ALPINE	0	0.00
AMADOR	3	7.53
BUTTE	22	9.70
CALAVERAS	7	14.83
COLUSA	9	38.62
CONTRA COSTA	123	11.55
DEL NORTE	16	52.23
EL DORADO	40	21.47
FRESNO	374	38.77
GLENN	0	0.00
HUMBOLDT	32	23.88
IMPERIAL	8	4.33
INYO	2	10.48
KERN	287	33.64
KINGS	21	13.04
LAKE	3	4.50
LASSEN	0	0.00
LOS ANGELES**	707	7.21
City of Long Beach*	48	9.74
City of Pasadena*	11	7.32
MADEIRA	109	68.88
MARIN	310	122.28
MARIPOSA	10	52.81
MENDOCINO	25	27.04
MERCED	102	38.10
MODOC	0	0.00
MONO	5	34.27
MONTEREY	32	7.43
NAPA	19	13.49
NEVADA	19	18.66
ORANGE	325	10.19
PLACER	47	13.79
PLUMAS	2	9.20
RIVERSIDE	224	10.28
SACRAMENTO	90	6.26
SAN BENITO	3	4.80
SAN BERNARDINO	58	2.71
SAN DIEGO	464	14.64
SAN FRANCISCO	83	10.19
SAN JOAQUIN	53	7.32
SAN LUIS OBISPO	364	135.84
SAN MATEO	111	15.12
SANTA BARBARA	47	10.91
SANTA CLARA	254	13.93
SANTA CRUZ	58	21.74
SHASTA	18	9.52
SIERRA	0	0.00
SISKIYOU	7	14.94
SOLANO	14	3.21
SONOMA	209	42.53
STANISLAUS	106	19.29
SUTTER	4	4.00
TEHAMA	1	1.55
TRINITY	0	0.00
TULARE	103	22.56
TUOLUMNE	9	15.40
VENTURA	20	2.36
YOLO	20	9.87
YUBA	4	5.10

*City health jurisdictions not included in county total

**Includes cases reported to LAC DPH as of 9/17/2010