

# 2015- 2016 KINDERGARTEN IMMUNIZATION ASSESSMENT

CALIFORNIA DEPARTMENT OF PUBLIC HEALTH, IMMUNIZATION BRANCH

---

## Introduction

Each autumn all schools with kindergartens in California are required to report student compliance with California School Immunization Laws (California Health and Safety Code Sections 120335-120375). This report summarizes data for the 2015-2016 school year reported by public and private kindergartens statewide (Table 1, Figures 1-5) and by county (Tables 2-7).

---

## Methods

Schools reported data to the California Department of Public Health (CDPH) in the autumn of 2015, prior to 2016 effective date for [Senate Bill \(SB\) 277](#) but during the second year of implementation of [Assembly Bill \(AB\) 2109](#).

Based on their immunization status, students were classified by school staff into the following categories:

- Fully vaccinated with all required immunizations<sup>1</sup>
- Conditional entrants, because either
  - Not fully-vaccinated but not currently overdue, or
  - Having a temporary medical exemption (TME) to vaccination
- Having a permanent medical exemption (PME) to vaccination
- Having a personal beliefs exemption (PBE). In 2014 and 2015, under the provisions of AB 2109 this required additional documentation from the parent or guardian of either:
  - Receiving information about immunizations and the diseases they prevent from an authorized health care practitioner or
  - Declaring a religious objection to seeking medical advice or treatment from authorized health care practitioners
- Overdue and subject to exclusion from school for non-compliance (new category for this year).

---

## Results

8,467 (97%), of 8,752 schools in California with kindergartners submitted immunization assessment reports by December 15, 2015 (Table 2), in comparison to 7,738 (95%) of 8,170 schools that reported in 2014. Private schools accounted for 27% (2401/8752) of all kindergartens but 73% (209/285) of kindergartens that did not submit reports. Figures 1-5 show trends over the last 6-7 years for students in public and private schools reported as fully-vaccinated, conditional entrants, PBEs, PME's, and fully-vaccinated by vaccine series.

**Fully vaccinated:** Of 551,123 kindergarten children whose schools reported their status, 511,708 (92.9%) had received all required immunizations,<sup>1</sup> an increase from the previous school year of 2.5 percentage points overall, 2.5 percentage points in public schools, and 1.6 percentage points in private schools (Table 1). Percentage point increases in completion rates for individual vaccines ranged from 0.9 percentage points for Varicella and Hep B to 1.9 percentage points for MMR (Table 1). The percentage of fully-vaccinated students increased in 46 (79%) of 58 counties (Table 4); Alameda County had the largest increase at 7.3% (Table 4).

---

<sup>1</sup> 4 or more doses of Diphtheria, Tetanus, Pertussis (4+ DTP), 3+ Polio, 2+ MMR (Measles, Mumps, Rubella), 3+ Hep B (Hepatitis B), and 1+ Var (Varicella) or physician-documented varicella disease.

As in past years, a higher proportion of students in public compared to private schools were fully vaccinated (93.2% vs. 88.2%). Rates for receipt of individual vaccines also are higher in public schools; for MMR, 94.5% of students at public schools vs. 90.5% at private schools were fully vaccinated.

Conditional entrants: Compared to the 2014-2015 school year, the proportion of pupils reported as conditional entrants in California decreased by 2.5 percentage points, equal to the increase in the rate of fully-vaccinated students. The rate of conditional entrants decreased in both public (-2.5 percentage points) and private (-1.5 percentage points) schools. Schools in 48 (83%) of 58 counties reported a reduction in conditional entrants, the largest reduction (-9.3 percentage points) occurring in Calaveras County (Table 5).

PBEs: Among kindergarteners, 2.38% had PBEs in 2015-2016, reduced from 2.54% (-0.16 percentage points) in 2014-2015 and 3.15% (-0.61 percentage points) in 2013-2014. After these declines, the PBE rate is now similar to the rate in 2011-2012 (2.32%). In 2015-2016, PBE rates declined over one year by 0.4 percentage points in private schools and 0.15 percentage points in public schools. The rates of PBEs continue to vary by county, with a range of 0% - 18.4% (Table 3).

PMEs: The percentage of students with PMEs was 0.17%, compared to 0.19% in 2014-15 (Table 1).

Overdue: In fall 2015, nearly 1,000 students (0.18%) were reported as being overdue for one or more immunizations (Table 3) and so subject to exclusion until all requirements are met.

---

## Discussion

The proportion of students entering kindergarten after receiving all required immunizations increased by 2.5 percentage points to 92.9% in the 2015-2016 school year, an increase matched by a 2.5 percentage point reduction in those reported as conditional entrants. Rates of PMEs and PBEs were no higher in 2015-2016 than the prior year.

A recent CDPH analysis of a sampling of California kindergartens suggests that fewer than 10% of children previously reported as conditional entrants truly fulfilled criteria for conditional entrance based on the [Conditional Admission Immunization Schedule](#) (CDPH, unpublished data). Incorporating pilot efforts by the Alameda County Public Health Department, in 2015 CDPH assisted local health departments in educating school staff on the proper use of conditional entrance criteria. In addition, schools were alerted that the required annual financial and compliance audits of local education agencies for the 2015-2016 school year will scrutinize reimbursement for attendance at schools with higher rates of conditional entrance. Under these interventions, Alameda County had the largest increase of any county in the rate of fully-immunized students (7.3 percentage points) and reported a comparable reduction in the rate of conditional entrants (-7.2 percentage points).

With the additional measures required under AB 2109 for requesting PBEs during 2014 and 2015, the rate of PBEs decreased from 3.15% in 2013-2014 to 2.38% in 2015-2016. Under SB 277, chaptered and 2015 and effective in 2016, PBEs will no longer be available for children entering a kindergarten program in California (See [ShotsForSchool.org](#) for additional information).

In addition to efforts taken to promote compliance of with immunization laws, additional factors may have contributed to increased vaccination rates among kindergarten students in 2015-16. The measles outbreak spreading from Disneyland in December 2014 to 12 CA counties (as well as 6 other states and 2 other countries), may have raised awareness of the risks of vaccine-preventable diseases and the benefits of immunization.

Despite improvements in vaccination rates, a number of schools and communities remain at risk of contagion. For example, in 2015-16, 20 (34%) of 58 counties in California have rates of fully immunized kindergarteners that are below 90% (Table 4). Furthermore, 31 (53%) counties have fewer than 95% of

kindergarteners reported as having two doses of MMR, an approximate threshold necessary to prevent the transmission of measles.

### **Limitations**

This report is subject to limitations that include:

- 285 schools with kindergartens did not report their data.
- Any immunizations received by children with PBEs or PME to other immunizations are not currently reported in the rates of students who have received all doses of specific vaccines, so completion rates may be underestimated.
- The timing of immunization is often not included in the assessment criteria; if doses were given at clinically inappropriate ages or intervals, the rates may overestimate levels of immunity.
- It is possible that some immunization records provided to schools have been incomplete. The presence of incomplete records would decrease estimates of immunization coverage, while any improvements over time in completion would increase estimates.

---

*For media inquiries, please contact CDPH Office of Public Affairs via e-mail [cdphpress@cdph.ca.gov](mailto:cdphpress@cdph.ca.gov) or phone 916-440-7259*

Table 1. Immunization Status, Vaccine-specific Coverage Rates, and 1-Year Percentage Point Change in CA Kindergartens, 2014-16 School Year\*

|   | 2015-16 |         |         | 2014-15 |         |         | 1 YR Change |        |         |
|---|---------|---------|---------|---------|---------|---------|-------------|--------|---------|
|   | All     | Public  | Private | All     | Public  | Private | All         | Public | Private |
| Number of Schools                         | 8,467   | 6,275   | 2,192   | 7,738   | 5,895   | 1,843   |             |        |         |
| Number of Students                        | 551,123 | 508,458 | 42,665  | 535,234 | 494,636 | 40,598  |             |        |         |
| All Required Immunizations                | 92.9%   | 93.2%   | 88.2%   | 90.4%   | 90.7%   | 86.6%   | +2.5%       | +2.5%  | +1.6%   |
| Conditional Entrants                      | 4.4%    | 4.3%    | 6.4%    | 6.9%    | 6.8%    | 7.8%    | -2.5%       | -2.5%  | -1.4%   |
| Permanent Medical Exemptions              | 0.17%   | 0.15%   | 0.34%   | 0.19%   | 0.19%   | 0.29%   | -0.02%      | -0.04% | -0.05%  |
| Overdue^                                  | 0.18%   | 0.18%   | 0.14%   | -       | -       | -       | -           | -      | -       |
| Personal Belief Exemptions                | 2.37%   | 2.16%   | 4.93%   | 2.54%   | 2.31%   | 5.33%   | -0.16%      | -0.15% | -0.40%  |
| Pre-January 2014                          | -       | -       | -       | 0.38%   | 0.27%   | 1.67%   |             |        |         |
| Health Care Practitioner Counseled        | 1.81%   | 1.64%   | 3.93%   | 1.64%   | 1.54%   | 2.85%   |             |        |         |
| Religious                                 | 0.56%   | 0.52%   | 1.00%   | 0.52%   | 0.50%   | 0.81%   |             |        |         |
| 4+ DTP                                    | 94.2%   | 94.5%   | 90.4%   | 92.4%   | 92.6%   | 89.2%   | +1.8%       | +1.9%  | +1.2%   |
| 3+ Polio                                  | 94.7%   | 95.0%   | 90.7%   | 93.0%   | 93.3%   | 89.5%   | +1.7%       | +1.7%  | +1.2%   |
| 2+ MMR                                    | 94.5%   | 94.9%   | 90.5%   | 92.6%   | 92.9%   | 88.8%   | +1.9%       | +2.0%  | +1.7%   |
| 3+ Hep B                                  | 95.8%   | 96.1%   | 92.8%   | 94.9%   | 95.1%   | 92.0%   | +0.9%       | +1.0%  | +0.8%   |
| 1+ Vari (or physician-documented disease) | 96.3%   | 96.6%   | 93.2%   | 95.4%   | 95.7%   | 92.5%   | +0.9%       | +0.9%  | +0.7%   |

\*Individual antigen status is unavailable for students with PBEs and PME.s. Therefore, fully-vaccinated and individual antigen immunization coverage may be underestimated.

^ 'Overdue' were students subject to exclusion from school.

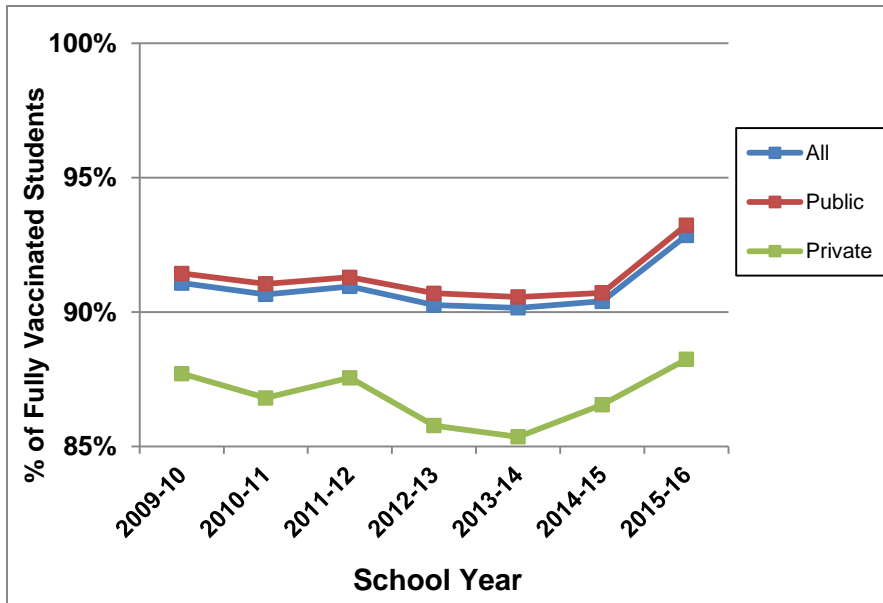


Figure 1. Percentage of Fully Vaccinated Kindergarten Students, by School Type and School Year, 2009-10 to 2015-16

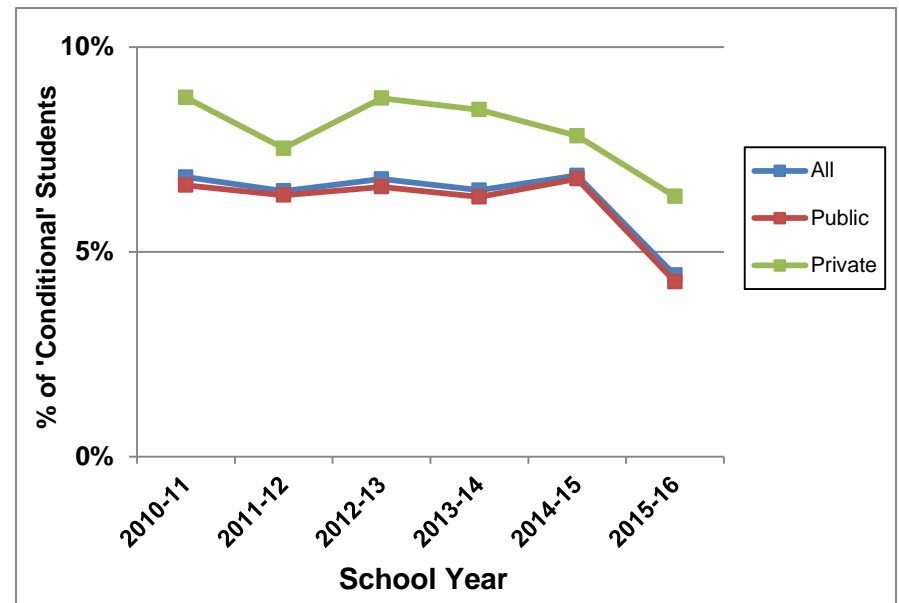


Figure 2. Percentage of Kindergarten 'Conditional' Entrants, by School Type and School Year, 2010-11 to 2015-16

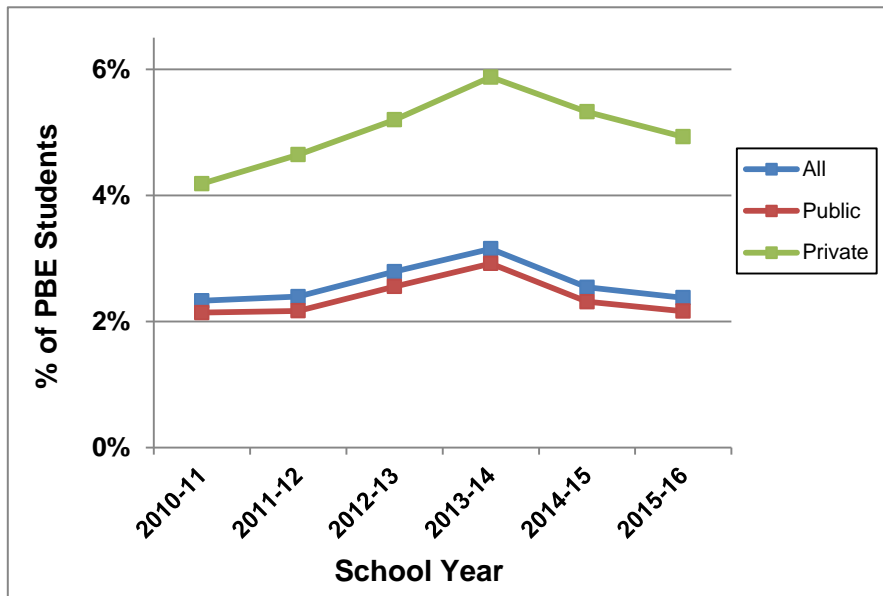


Figure 3. Percentage of Kindergarten PBEs, by School Type and School Year, 2010-11 to 2015-16

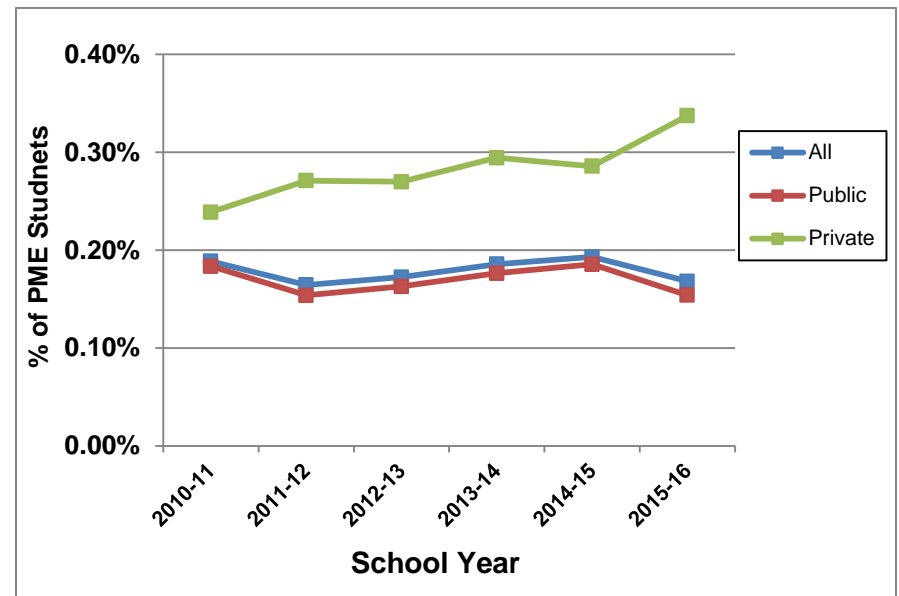


Figure 4. Percentage of Kindergarten PMEs, by School Type and School Year, 2010-11 to 2015-16

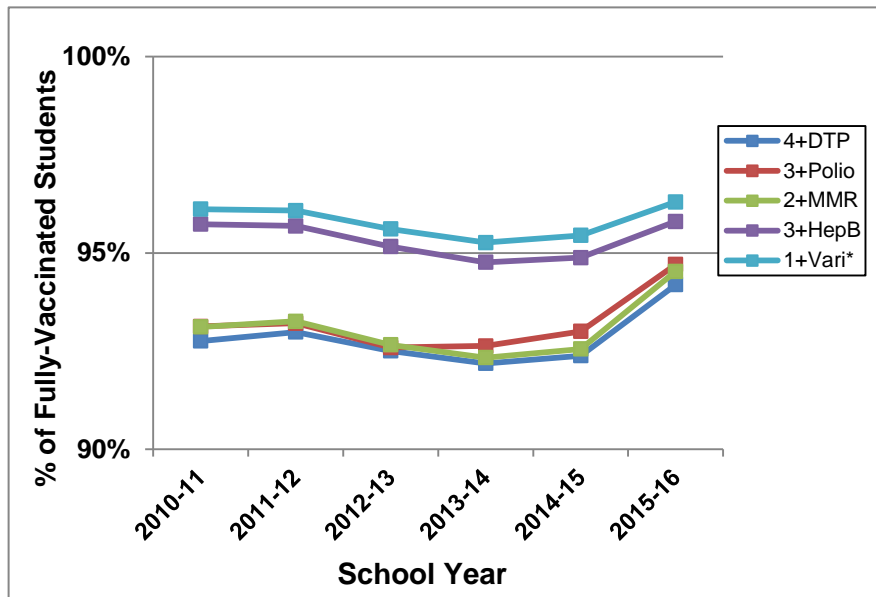


Figure 5. Percentage of Fully Vaccinated Kindergarten Students, by Vaccine Type and School Year, 2010-11 to 2015-16

KINDERGARTEN ASSESSMENT - CALIFORNIA, 2015-2016  
TABLE 2: NUMBER AND PERCENTAGE OF SCHOOLS REPORTING BY SCHOOL TYPE,  
BY COUNTY

|              | SCHOOL TYPE             |                     |                      |                         |                     |                      |                         |                     |                      |
|--------------|-------------------------|---------------------|----------------------|-------------------------|---------------------|----------------------|-------------------------|---------------------|----------------------|
|              | ALL                     |                     |                      | PUBLIC                  |                     |                      | PRIVATE                 |                     |                      |
|              | NUMBER<br>OF<br>SCHOOLS | NUMBER<br>REPORTING | PERCENT<br>REPORTING | NUMBER<br>OF<br>SCHOOLS | NUMBER<br>REPORTING | PERCENT<br>REPORTING | NUMBER<br>OF<br>SCHOOLS | NUMBER<br>REPORTING | PERCENT<br>REPORTING |
| STATE TOTAL  | 8,752                   | 8,467               | 96.7%                | 6,351                   | 6,275               | 98.8%                | 2,401                   | 2,192               | 91.3%                |
| COUNTY       |                         |                     |                      |                         |                     |                      |                         |                     |                      |
| ALAMEDA      | 339                     | 322                 | 95.0%                | 234                     | 228                 | 97.4%                | 105                     | 94                  | 89.5%                |
| ALPINE       | 1                       | 1                   | 100.0%               | 1                       | 1                   | 100.0%               | 0                       | 0                   | 0.0%                 |
| AMADOR       | 8                       | 8                   | 100.0%               | 8                       | 8                   | 100.0%               | 0                       | 0                   | 0.0%                 |
| BUTTE        | 68                      | 67                  | 98.5%                | 56                      | 56                  | 100.0%               | 12                      | 11                  | 91.7%                |
| CALAVERAS    | 14                      | 13                  | 92.9%                | 13                      | 13                  | 100.0%               | 1                       | 0                   | 0.0%                 |
| COLUSA       | 8                       | 8                   | 100.0%               | 7                       | 7                   | 100.0%               | 1                       | 1                   | 100.0%               |
| CONTRA COSTA | 247                     | 243                 | 98.4%                | 169                     | 168                 | 99.4%                | 78                      | 75                  | 96.2%                |
| DEL NORTE    | 12                      | 12                  | 100.0%               | 11                      | 11                  | 100.0%               | 1                       | 1                   | 100.0%               |
| EL DORADO    | 47                      | 47                  | 100.0%               | 38                      | 38                  | 100.0%               | 9                       | 9                   | 100.0%               |
| FRESNO       | 249                     | 247                 | 99.2%                | 217                     | 217                 | 100.0%               | 32                      | 30                  | 93.8%                |
| GLENN        | 13                      | 13                  | 100.0%               | 11                      | 11                  | 100.0%               | 2                       | 2                   | 100.0%               |
| HUMBOLDT     | 65                      | 65                  | 100.0%               | 56                      | 56                  | 100.0%               | 9                       | 9                   | 100.0%               |
| IMPERIAL     | 47                      | 47                  | 100.0%               | 41                      | 41                  | 100.0%               | 6                       | 6                   | 100.0%               |
| INYO         | 11                      | 11                  | 100.0%               | 11                      | 11                  | 100.0%               | 0                       | 0                   | 0.0%                 |
| KERN         | 200                     | 195                 | 97.5%                | 163                     | 162                 | 99.4%                | 37                      | 33                  | 89.2%                |
| KINGS        | 44                      | 44                  | 100.0%               | 38                      | 38                  | 100.0%               | 6                       | 6                   | 100.0%               |
| LAKE         | 24                      | 22                  | 91.7%                | 19                      | 18                  | 94.7%                | 5                       | 4                   | 80.0%                |
| LASSEN       | 16                      | 15                  | 93.8%                | 16                      | 15                  | 93.8%                | 0                       | 0                   | 0.0%                 |
| LOS ANGELES  | 2,043                   | 1,867               | 91.4%                | 1,360                   | 1,318               | 96.9%                | 683                     | 549                 | 80.4%                |
| MADERA       | 49                      | 44                  | 89.8%                | 42                      | 39                  | 92.9%                | 7                       | 5                   | 71.4%                |
| MARIN        | 80                      | 80                  | 100.0%               | 50                      | 50                  | 100.0%               | 30                      | 30                  | 100.0%               |
| MARIPOSA     | 12                      | 12                  | 100.0%               | 11                      | 11                  | 100.0%               | 1                       | 1                   | 0.0%                 |
| MENDOCINO    | 39                      | 38                  | 97.4%                | 33                      | 32                  | 97.0%                | 6                       | 6                   | 100.0%               |
| MERCED       | 73                      | 62                  | 84.9%                | 58                      | 55                  | 94.8%                | 15                      | 7                   | 46.7%                |
| MODOC        | 11                      | 11                  | 100.0%               | 9                       | 9                   | 100.0%               | 2                       | 2                   | 100.0%               |
| MONO         | 6                       | 6                   | 100.0%               | 5                       | 5                   | 100.0%               | 1                       | 1                   | 100.0%               |
| MONTEREY     | 97                      | 97                  | 100.0%               | 82                      | 82                  | 100.0%               | 15                      | 15                  | 100.0%               |
| NAPA         | 41                      | 41                  | 100.0%               | 26                      | 26                  | 100.0%               | 15                      | 15                  | 100.0%               |

KINDERGARTEN ASSESSMENT - CALIFORNIA, 2015-2016  
TABLE 2: NUMBER AND PERCENTAGE OF SCHOOLS REPORTING BY SCHOOL TYPE,  
BY COUNTY

|                 | SCHOOL TYPE       |                  |                   |                   |                  |                   |                   |                  |                   |
|-----------------|-------------------|------------------|-------------------|-------------------|------------------|-------------------|-------------------|------------------|-------------------|
|                 | ALL               |                  |                   | PUBLIC            |                  |                   | PRIVATE           |                  |                   |
|                 | NUMBER OF SCHOOLS | NUMBER REPORTING | PERCENT REPORTING | NUMBER OF SCHOOLS | NUMBER REPORTING | PERCENT REPORTING | NUMBER OF SCHOOLS | NUMBER REPORTING | PERCENT REPORTING |
| STATE TOTAL     | 8,752             | 8,467            | 96.7%             | 6,351             | 6,275            | 98.8%             | 2,401             | 2,192            | 91.3%             |
| COUNTY          |                   |                  |                   |                   |                  |                   |                   |                  |                   |
| NEVADA          | 29                | 27               | 93.1%             | 23                | 23               | 100.0%            | 6                 | 4                | 66.7%             |
| ORANGE          | 649               | 649              | 100.0%            | 405               | 405              | 100.0%            | 244               | 244              | 100.0%            |
| PLACER          | 102               | 100              | 98.0%             | 86                | 85               | 98.8%             | 16                | 15               | 93.8%             |
| PLUMAS          | 9                 | 8                | 88.9%             | 6                 | 6                | 100.0%            | 3                 | 2                | 66.7%             |
| RIVERSIDE       | 419               | 419              | 100.0%            | 306               | 306              | 100.0%            | 113               | 113              | 100.0%            |
| SACRAMENTO      | 321               | 300              | 93.5%             | 246               | 239              | 97.2%             | 75                | 61               | 81.3%             |
| SAN BENITO      | 24                | 21               | 87.5%             | 19                | 16               | 84.2%             | 5                 | 5                | 100.0%            |
| SAN BERNARDINO  | 472               | 472              | 100.0%            | 362               | 362              | 100.0%            | 110               | 110              | 100.0%            |
| SAN DIEGO       | 683               | 683              | 100.0%            | 501               | 501              | 100.0%            | 182               | 182              | 100.0%            |
| SAN FRANCISCO   | 159               | 158              | 99.4%             | 77                | 77               | 100.0%            | 82                | 81               | 98.8%             |
| SAN JOAQUIN     | 199               | 199              | 100.0%            | 170               | 170              | 100.0%            | 29                | 29               | 100.0%            |
| SAN LUIS OBISPO | 66                | 63               | 95.5%             | 48                | 48               | 100.0%            | 18                | 15               | 83.3%             |
| SAN MATEO       | 170               | 170              | 100.0%            | 112               | 112              | 100.0%            | 58                | 58               | 100.0%            |
| SANTA BARBARA   | 106               | 104              | 98.1%             | 79                | 79               | 100.0%            | 27                | 25               | 92.6%             |
| SANTA CLARA     | 405               | 405              | 100.0%            | 264               | 264              | 100.0%            | 141               | 141              | 100.0%            |
| SANTA CRUZ      | 68                | 65               | 95.6%             | 47                | 47               | 100.0%            | 21                | 18               | 85.7%             |
| SHASTA          | 76                | 73               | 96.1%             | 61                | 60               | 98.4%             | 15                | 13               | 86.7%             |
| SIERRA          | 3                 | 3                | 100.0%            | 3                 | 3                | 100.0%            | 0                 | 0                | 0.0%              |
| SISKIYOU        | 36                | 36               | 100.0%            | 32                | 32               | 100.0%            | 4                 | 4                | 100.0%            |
| SOLANO          | 78                | 72               | 92.3%             | 60                | 58               | 96.7%             | 18                | 14               | 77.8%             |
| SONOMA          | 149               | 149              | 100.0%            | 117               | 117              | 100.0%            | 32                | 32               | 100.0%            |
| STANISLAUS      | 140               | 138              | 98.6%             | 119               | 119              | 100.0%            | 21                | 19               | 90.5%             |
| SUTTER          | 35                | 34               | 97.1%             | 31                | 31               | 100.0%            | 4                 | 3                | 75.0%             |
| TEHAMA          | 34                | 32               | 94.1%             | 32                | 32               | 100.0%            | 2                 | 0                | 0.0%              |
| TRINITY         | 15                | 15               | 100.0%            | 15                | 15               | 100.0%            | 0                 | 0                | 0.0%              |
| TULARE          | 133               | 129              | 97.0%             | 120               | 118              | 98.3%             | 13                | 11               | 84.6%             |
| TUOLUMNE        | 24                | 23               | 95.8%             | 18                | 18               | 100.0%            | 6                 | 5                | 83.3%             |
| VENTURA         | 210               | 209              | 99.5%             | 145               | 145              | 100.0%            | 65                | 64               | 98.5%             |
| YOLO            | 46                | 46               | 100.0%            | 35                | 35               | 100.0%            | 11                | 11               | 100.0%            |
| YUBA            | 28                | 27               | 96.4%             | 27                | 26               | 96.3%             | 1                 | 1                | 100.0%            |



KINDERGARTEN ASSESSMENT - CALIFORNIA, 2015-2016  
TABLE 3: TOTAL ENROLLMENT AND ADMISSION STATUS,  
BY COUNTY

|              | TOTAL STUDENTS | ENTRANTS WITH ALL REQ. IMMUN. |         | CONDITIONAL ENTRANTS |         | ENTRANTS WITH PME |         | ENTRANTS WITH PBE |         | OVERDUE |         |
|--------------|----------------|-------------------------------|---------|----------------------|---------|-------------------|---------|-------------------|---------|---------|---------|
|              | NUMBER         | NUMBER                        | PERCENT | NUMBER               | PERCENT | NUMBER            | PERCENT | NUMBER            | PERCENT | NUMBER  | PERCENT |
| STATE TOTAL  | 551,123        | 511,708                       | 92.8%   | 24,424               | 4.4%    | 931               | 0.2%    | 13,086            | 2.4%    | 974     | 0.18%   |
| COUNTY       |                |                               |         |                      |         |                   |         |                   |         |         |         |
| ALAMEDA      | 21,644         | 20,752                        | 95.9%   | 534                  | 2.5%    | 28                | 0.1%    | 263               | 1.2%    | 67      | 0.31%   |
| ALPINE       | 6              | 6                             | 100.0%  | 0                    | 0.0%    | 0                 | 0.0%    | 0                 | 0.0%    | 0       | 0.00%   |
| AMADOR       | 307            | 268                           | 87.3%   | 20                   | 6.5%    | 3                 | 1.0%    | 10                | 3.3%    | 6       | 1.95%   |
| BUTTE        | 2,936          | 2,654                         | 90.4%   | 118                  | 4.0%    | 6                 | 0.2%    | 156               | 5.3%    | 2       | 0.07%   |
| CALAVERAS    | 419            | 370                           | 88.3%   | 3                    | 0.7%    | 0                 | 0.0%    | 44                | 10.5%   | 2       | 0.48%   |
| COLUSA       | 408            | 407                           | 99.8%   | 1                    | 0.2%    | 0                 | 0.0%    | 0                 | 0.0%    | 0       | 0.00%   |
| CONTRA COSTA | 15,398         | 14,645                        | 95.1%   | 415                  | 2.7%    | 31                | 0.2%    | 304               | 2.0%    | 3       | 0.02%   |
| DEL NORTE    | 344            | 304                           | 88.4%   | 10                   | 2.9%    | 0                 | 0.0%    | 30                | 8.7%    | 0       | 0.00%   |
| EL DORADO    | 2,246          | 2,031                         | 90.4%   | 46                   | 2.0%    | 7                 | 0.3%    | 161               | 7.2%    | 1       | 0.04%   |
| FRESNO       | 18,763         | 18,043                        | 96.2%   | 512                  | 2.7%    | 14                | 0.1%    | 181               | 1.0%    | 13      | 0.07%   |
| GLENN        | 483            | 457                           | 94.6%   | 10                   | 2.1%    | 1                 | 0.2%    | 12                | 2.5%    | 3       | 0.62%   |
| HUMBOLDT     | 1,741          | 1,428                         | 82.0%   | 121                  | 7.0%    | 5                 | 0.3%    | 181               | 10.4%   | 6       | 0.34%   |
| IMPERIAL     | 3,200          | 3,051                         | 95.3%   | 126                  | 3.9%    | 5                 | 0.2%    | 17                | 0.5%    | 1       | 0.03%   |
| INYO         | 209            | 206                           | 98.6%   | 1                    | 0.5%    | 0                 | 0.0%    | 2                 | 1.0%    | 0       | 0.00%   |
| KERN         | 16,492         | 15,715                        | 95.3%   | 471                  | 2.9%    | 26                | 0.2%    | 247               | 1.5%    | 33      | 0.20%   |
| KINGS        | 2,588          | 2,507                         | 96.9%   | 52                   | 2.0%    | 3                 | 0.1%    | 24                | 0.9%    | 2       | 0.08%   |
| LAKE         | 804            | 747                           | 92.9%   | 31                   | 3.9%    | 6                 | 0.7%    | 20                | 2.5%    | 0       | 0.00%   |
| LASSEN       | 378            | 325                           | 86.0%   | 14                   | 3.7%    | 3                 | 0.8%    | 36                | 9.5%    | 0       | 0.00%   |
| LOS ANGELES  | 134,209        | 120,794                       | 90.0%   | 11,061               | 8.2%    | 169               | 0.1%    | 1,995             | 1.5%    | 190     | 0.14%   |
| MADERA       | 2,797          | 2,681                         | 95.9%   | 68                   | 2.4%    | 6                 | 0.2%    | 40                | 1.4%    | 2       | 0.07%   |
| MARIN        | 3,306          | 2,926                         | 88.5%   | 176                  | 5.3%    | 8                 | 0.2%    | 196               | 5.9%    | 0       | 0.00%   |
| MARIPOSA     | 157            | 128                           | 81.5%   | 8                    | 5.1%    | 0                 | 0.0%    | 21                | 13.4%   | 0       | 0.00%   |
| MENDOCINO    | 1,191          | 1,041                         | 87.4%   | 52                   | 4.4%    | 5                 | 0.4%    | 85                | 7.1%    | 8       | 0.67%   |
| MERCED       | 5,016          | 4,842                         | 96.5%   | 102                  | 2.0%    | 5                 | 0.1%    | 39                | 0.8%    | 28      | 0.56%   |
| MODOC        | 128            | 112                           | 87.5%   | 13                   | 10.2%   | 0                 | 0.0%    | 1                 | 0.8%    | 2       | 1.56%   |
| MONO         | 144            | 127                           | 88.2%   | 1                    | 0.7%    | 0                 | 0.0%    | 16                | 11.1%   | 0       | 0.00%   |
| MONTEREY     | 6,960          | 6,593                         | 94.7%   | 245                  | 3.5%    | 16                | 0.2%    | 98                | 1.4%    | 8       | 0.11%   |
| NAPA         | 1,750          | 1,635                         | 93.4%   | 54                   | 3.1%    | 3                 | 0.2%    | 58                | 3.3%    | 0       | 0.00%   |
| NEVADA       | 896            | 691                           | 77.1%   | 30                   | 3.3%    | 2                 | 0.2%    | 165               | 18.4%   | 8       | 0.89%   |

KINDERGARTEN ASSESSMENT - CALIFORNIA, 2015-2016  
TABLE 3: TOTAL ENROLLMENT AND ADMISSION STATUS,  
BY COUNTY

|                 | TOTAL STUDENTS | ENTRANTS WITH ALL REQ. IMMUN. |         | CONDITIONAL ENTRANTS |         | ENTRANTS WITH PME |         | ENTRANTS WITH PBE |         | OVERDUE |         |
|-----------------|----------------|-------------------------------|---------|----------------------|---------|-------------------|---------|-------------------|---------|---------|---------|
|                 | NUMBER         | NUMBER                        | PERCENT | NUMBER               | PERCENT | NUMBER            | PERCENT | NUMBER            | PERCENT | NUMBER  | PERCENT |
| STATE TOTAL     | 551,123        | 511,708                       | 92.8%   | 24,424               | 4.4%    | 931               | 0.2%    | 13,086            | 2.4%    | 974     | 0.18%   |
| COUNTY          |                |                               |         |                      |         |                   |         |                   |         |         |         |
| ORANGE          | 42,007         | 38,848                        | 92.5%   | 1,749                | 4.2%    | 92                | 0.2%    | 1,270             | 3.0%    | 48      | 0.11%   |
| PLACER          | 5,756          | 5,113                         | 88.8%   | 292                  | 5.1%    | 8                 | 0.1%    | 343               | 6.0%    | 0       | 0.00%   |
| PLUMAS          | 188            | 162                           | 86.2%   | 6                    | 3.2%    | 3                 | 1.6%    | 17                | 9.0%    | 0       | 0.00%   |
| RIVERSIDE       | 34,506         | 32,857                        | 95.2%   | 819                  | 2.4%    | 71                | 0.2%    | 728               | 2.1%    | 31      | 0.09%   |
| SACRAMENTO      | 20,649         | 18,281                        | 88.5%   | 1,453                | 7.0%    | 29                | 0.1%    | 838               | 4.1%    | 48      | 0.23%   |
| SAN BENITO      | 908            | 872                           | 96.0%   | 19                   | 2.1%    | 5                 | 0.6%    | 11                | 1.2%    | 1       | 0.11%   |
| SAN BERNARDINO  | 34,118         | 32,378                        | 94.9%   | 938                  | 2.7%    | 55                | 0.2%    | 651               | 1.9%    | 96      | 0.28%   |
| SAN DIEGO       | 45,646         | 42,686                        | 93.5%   | 1,088                | 2.4%    | 108               | 0.2%    | 1,631             | 3.6%    | 133     | 0.29%   |
| SAN FRANCISCO   | 6,524          | 6,035                         | 92.5%   | 382                  | 5.9%    | 10                | 0.2%    | 96                | 1.5%    | 1       | 0.02%   |
| SAN JOAQUIN     | 12,201         | 11,706                        | 95.9%   | 267                  | 2.2%    | 18                | 0.1%    | 159               | 1.3%    | 51      | 0.42%   |
| SAN LUIS OBISPO | 3,147          | 2,824                         | 89.7%   | 140                  | 4.4%    | 5                 | 0.2%    | 174               | 5.5%    | 4       | 0.13%   |
| SAN MATEO       | 9,757          | 9,285                         | 95.2%   | 295                  | 3.0%    | 14                | 0.1%    | 159               | 1.6%    | 4       | 0.04%   |
| SANTA BARBARA   | 6,721          | 6,381                         | 94.9%   | 92                   | 1.4%    | 7                 | 0.1%    | 240               | 3.6%    | 1       | 0.01%   |
| SANTA CLARA     | 26,269         | 24,897                        | 94.8%   | 842                  | 3.2%    | 59                | 0.2%    | 437               | 1.7%    | 34      | 0.13%   |
| SANTA CRUZ      | 3,567          | 3,120                         | 87.5%   | 110                  | 3.1%    | 13                | 0.4%    | 313               | 8.8%    | 11      | 0.31%   |
| SHASTA          | 2,232          | 1,875                         | 84.0%   | 160                  | 7.2%    | 1                 | 0.0%    | 187               | 8.4%    | 9       | 0.40%   |
| SIERRA          | 27             | 27                            | 100.0%  | 0                    | 0.0%    | 0                 | 0.0%    | 0                 | 0.0%    | 0       | 0.00%   |
| SISKIYOU        | 488            | 409                           | 83.8%   | 35                   | 7.2%    | 0                 | 0.0%    | 38                | 7.8%    | 6       | 1.23%   |
| SOLANO          | 5,592          | 5,303                         | 94.8%   | 185                  | 3.3%    | 9                 | 0.2%    | 84                | 1.5%    | 11      | 0.20%   |
| SONOMA          | 6,757          | 6,220                         | 92.1%   | 169                  | 2.5%    | 15                | 0.2%    | 327               | 4.8%    | 26      | 0.38%   |
| STANISLAUS      | 9,397          | 8,920                         | 94.9%   | 221                  | 2.4%    | 16                | 0.2%    | 215               | 2.3%    | 25      | 0.27%   |
| SUTTER          | 1,909          | 1,719                         | 90.0%   | 31                   | 1.6%    | 6                 | 0.3%    | 150               | 7.9%    | 3       | 0.16%   |
| TEHAMA          | 1,011          | 951                           | 94.1%   | 27                   | 2.7%    | 4                 | 0.4%    | 28                | 2.8%    | 1       | 0.10%   |
| TRINITY         | 139            | 107                           | 77.0%   | 12                   | 8.6%    | 0                 | 0.0%    | 20                | 14.4%   | 0       | 0.00%   |
| TULARE          | 9,267          | 8,996                         | 97.1%   | 171                  | 1.8%    | 7                 | 0.1%    | 83                | 0.9%    | 10      | 0.11%   |
| TUOLUMNE        | 569            | 442                           | 77.7%   | 79                   | 13.9%   | 1                 | 0.2%    | 47                | 8.3%    | 0       | 0.00%   |
| VENTURA         | 12,718         | 11,975                        | 94.2%   | 374                  | 2.9%    | 20                | 0.2%    | 316               | 2.5%    | 33      | 0.26%   |
| YOLO            | 2,725          | 2,500                         | 91.7%   | 128                  | 4.7%    | 1                 | 0.0%    | 95                | 3.5%    | 1       | 0.04%   |
| YUBA            | 1,408          | 1,333                         | 94.7%   | 45                   | 3.2%    | 2                 | 0.1%    | 27                | 1.9%    | 1       | 0.07%   |

KINDERGARTEN ASSESSMENT - CALIFORNIA, 2015-2016

TABLE 4:NUMBER AND PERCENTAGE OF FULLY VACCINATED STUDENTS, AND 1 YEAR PERCENTAGE POINT CHANGE  
AND NUMBER OF FULLY VACCINATED STUDENTS COMPARED TO LAST YEAR, BY COUNTY

|              | 2015-2016      |                   |         | 2014-2015 |                   |         | 1-YEAR CHANGE |                   |
|--------------|----------------|-------------------|---------|-----------|-------------------|---------|---------------|-------------------|
|              | TOTAL STUDENTS | NUMBER FULLY VACC | PERCENT | TOTAL     | NUMBER FULLY VACC | PERCENT | PERCENT       | NUMBER FULLY VACC |
| STATE TOTAL  | 551,123        | 511,708           | 92.9%   | 535,234   | 483,877           | 90.4%   | +2.5%         | 27,831            |
| COUNTY       |                |                   |         |           |                   |         |               |                   |
| ALAMEDA      | 21,644         | 20,752            | 95.9%   | 20,801    | 18,427            | 88.6%   | +7.3%         | +2325             |
| ALPINE       | 6              | 6                 | 100.0%  | 0         | 0                 | 0.0%    | -             | -                 |
| AMADOR       | 307            | 268               | 87.3%   | 268       | 246               | 91.8%   | -4.5%         | +22               |
| BUTTE        | 2,936          | 2,654             | 90.4%   | 2,735     | 2,386             | 87.2%   | +3.2%         | +268              |
| CALAVERAS    | 419            | 370               | 88.3%   | 408       | 333               | 81.6%   | +6.7%         | +37               |
| COLUSA       | 408            | 407               | 99.8%   | 403       | 398               | 98.8%   | +1.0%         | +9                |
| CONTRA COSTA | 15,398         | 14,645            | 95.1%   | 14,651    | 13,747            | 93.8%   | +1.3%         | +898              |
| DEL NORTE    | 344            | 304               | 88.4%   | 331       | 294               | 88.8%   | -0.4%         | +10               |
| EL DORADO    | 2,246          | 2,031             | 90.4%   | 2,195     | 1,982             | 90.3%   | +0.1%         | +49               |
| FRESNO       | 18,763         | 18,043            | 96.2%   | 17,965    | 17,095            | 95.2%   | +1.0%         | +948              |
| GLENN        | 483            | 457               | 94.6%   | 312       | 301               | 96.5%   | -1.9%         | +156              |
| HUMBOLDT     | 1,741          | 1,428             | 82.0%   | 1,613     | 1,221             | 75.7%   | +6.3%         | +207              |
| IMPERIAL     | 3,200          | 3,051             | 95.3%   | 3,110     | 2,905             | 93.4%   | +1.9%         | +146              |
| INYO         | 209            | 206               | 98.6%   | 243       | 233               | 95.9%   | +2.7%         | -27               |
| KERN         | 16,492         | 15,715            | 95.3%   | 16,098    | 15,051            | 93.5%   | +1.8%         | +664              |
| KINGS        | 2,588          | 2,507             | 96.9%   | 2,722     | 2,633             | 96.7%   | +0.1%         | -126              |
| LAKE         | 804            | 747               | 92.9%   | 845       | 768               | 90.9%   | +2.0%         | -21               |
| LASSEN       | 378            | 325               | 86.0%   | 358       | 300               | 83.8%   | +2.2%         | +25               |
| LOS ANGELES  | 134,209        | 120,794           | 90.0%   | 130,146   | 111,884           | 86.0%   | +4.0%         | +8910             |
| MADERA       | 2,797          | 2,681             | 95.9%   | 2,246     | 2,088             | 93.0%   | +2.9%         | +593              |
| MARIN        | 3,306          | 2,926             | 88.5%   | 3,334     | 2,806             | 84.2%   | +4.3%         | +120              |
| MARIPOSA     | 157            | 128               | 81.5%   | 168       | 134               | 79.8%   | +1.8%         | -6                |
| MENDOCINO    | 1,191          | 1,041             | 87.4%   | 1,191     | 967               | 81.2%   | +6.2%         | +74               |
| MERCED       | 5,016          | 4,842             | 96.5%   | 5,199     | 4,948             | 95.2%   | +1.4%         | -106              |
| MODOC        | 128            | 112               | 87.5%   | 111       | 103               | 92.8%   | -5.3%         | +9                |
| MONO         | 144            | 127               | 88.2%   | 148       | 128               | 86.5%   | +1.7%         | -1                |
| MONTEREY     | 6,960          | 6,593             | 94.7%   | 6,984     | 6,178             | 88.5%   | +6.3%         | +415              |
| NAPA         | 1,750          | 1,635             | 93.4%   | 1,921     | 1,796             | 93.5%   | -0.1%         | -161              |
| NEVADA       | 896            | 691               | 77.1%   | 854       | 620               | 72.6%   | +4.5%         | +71               |

KINDERGARTEN ASSESSMENT - CALIFORNIA, 2015-2016

TABLE 4:NUMBER AND PERCENTAGE OF FULLY VACCINATED STUDENTS, AND 1 YEAR PERCENTAGE POINT CHANGE  
AND NUMBER OF FULLY VACCINATED STUDENTS COMPARED TO LAST YEAR, BY COUNTY

|                 | 2015-2016      |                   |         | 2014-2015 |                   |         | 1-YEAR CHANGE |                   |
|-----------------|----------------|-------------------|---------|-----------|-------------------|---------|---------------|-------------------|
|                 | TOTAL STUDENTS | NUMBER FULLY VACC | PERCENT | TOTAL     | NUMBER FULLY VACC | PERCENT | PERCENT       | NUMBER FULLY VACC |
| STATE TOTAL     | 551,123        | 511,708           | 92.9%   | 535,234   | 483,877           | 90.4%   | +2.5%         | 27,831            |
| COUNTY          |                |                   |         |           |                   |         |               |                   |
| ORANGE          | 42,007         | 38,848            | 92.5%   | 42,076    | 37,891            | 90.1%   | +2.4%         | +957              |
| PLACER          | 5,756          | 5,113             | 88.8%   | 5,524     | 4,773             | 86.4%   | +2.4%         | +340              |
| PLUMAS          | 188            | 162               | 86.2%   | 149       | 126               | 84.6%   | +1.6%         | +36               |
| RIVERSIDE       | 34,506         | 32,857            | 95.2%   | 34,377    | 32,439            | 94.4%   | +0.9%         | +418              |
| SACRAMENTO      | 20,649         | 18,281            | 88.5%   | 19,527    | 17,065            | 87.4%   | +1.1%         | +1,216            |
| SAN BENITO      | 908            | 872               | 96.0%   | 897       | 868               | 96.8%   | +0.7%         | +4                |
| SAN BERNARDINO  | 34,118         | 32,378            | 94.9%   | 33,818    | 31,706            | 93.8%   | +1.1%         | +672              |
| SAN DIEGO       | 45,646         | 42,686            | 93.5%   | 43,827    | 40,468            | 92.3%   | +1.2%         | +2,218            |
| SAN FRANCISCO   | 6,524          | 6,035             | 92.5%   | 6,560     | 5,670             | 86.4%   | +6.1%         | +365              |
| SAN JOAQUIN     | 12,201         | 11,706            | 95.9%   | 11,742    | 11,221            | 95.6%   | +0.4%         | +485              |
| SAN LUIS OBISPO | 3,147          | 2,824             | 89.7%   | 2,982     | 2,599             | 87.2%   | +2.6%         | +225              |
| SAN MATEO       | 9,757          | 9,285             | 95.2%   | 9,343     | 8,740             | 93.5%   | +1.6%         | +545              |
| SANTA BARBARA   | 6,721          | 6,381             | 94.9%   | 6,641     | 6,269             | 94.4%   | +0.5%         | +112              |
| SANTA CLARA     | 26,269         | 24,897            | 94.8%   | 24,541    | 22,893            | 93.3%   | +1.5%         | +2,004            |
| SANTA CRUZ      | 3,567          | 3,120             | 87.5%   | 3,680     | 3,082             | 83.8%   | +3.7%         | +38               |
| SHASTA          | 2,232          | 1,875             | 84.0%   | 2,245     | 1,899             | 84.6%   | -0.6%         | -24               |
| SIERRA          | 27             | 27                | 100.0%  | 28        | 28                | 100.0%  | -             | -                 |
| SISKIYOU        | 488            | 409               | 83.8%   | 510       | 422               | 82.7%   | +1.1%         | -13               |
| SOLANO          | 5,592          | 5,303             | 94.8%   | 5,273     | 4,982             | 94.5%   | +0.4%         | +321              |
| SONOMA          | 6,757          | 6,220             | 92.1%   | 6,552     | 5,900             | 90.0%   | +2.0%         | +320              |
| STANISLAUS      | 9,397          | 8,920             | 94.9%   | 8,921     | 8,335             | 93.4%   | +1.5%         | +585              |
| SUTTER          | 1,909          | 1,719             | 90.0%   | 1,852     | 1,675             | 90.4%   | -0.4%         | +44               |
| TEHAMA          | 1,011          | 951               | 94.1%   | 987       | 926               | 93.8%   | +0.2%         | +25               |
| TRINITY         | 139            | 107               | 77.0%   | 114       | 93                | 81.6%   | -4.6%         | +14               |
| TULARE          | 9,267          | 8,996             | 97.1%   | 9,315     | 8,992             | 96.5%   | +0.5%         | +4                |
| TUOLUMNE        | 569            | 442               | 77.7%   | 462       | 358               | 77.5%   | +0.2%         | +84               |
| VENTURA         | 12,718         | 11,975            | 94.2%   | 12,163    | 10,955            | 90.1%   | +4.1%         | +1,020            |
| YOLO            | 2,725          | 2,500             | 91.7%   | 2,504     | 2,318             | 92.6%   | -0.8%         | +182              |
| YUBA            | 1,408          | 1,333             | 94.7%   | 1,264     | 1,212             | 95.9%   | -1.2%         | +121              |

KINDERGARTEN ASSESSMENT - CALIFORNIA, 2015-2016

TABLE 5: NUMBER AND PERCENTAGE OF 'CONDITIONAL' STUDENTS, AND 1 YEAR PERCENTAGE POINT CHANGE  
AND NUMBER OF 'CONDITIONAL' STUDENTS COMPARED TO LAST YEAR, BY COUNTY

|              | 2015-2016 |              |         | 2014-2015 |              |         | 1-YEAR CHANGE |              |
|--------------|-----------|--------------|---------|-----------|--------------|---------|---------------|--------------|
|              | TOTAL     | CONDITIONALS | PERCENT | TOTAL     | CONDITIONALS | PERCENT | PERCENT       | CONDITIONALS |
| STATE TOTAL  | 551,123   | 24,424       | 4.4%    | 535,234   | 36,731       | 6.9%    | -2.5%         | -12,307      |
| COUNTY       |           |              |         |           |              |         |               |              |
| ALAMEDA      | 21,644    | 534          | 2.5%    | 20,801    | 2,014        | 9.7%    | -7.2%         | -1,480       |
| ALPINE       | 6         | 0            | 0.0%    | 0         | 0            | -       | -             | -            |
| AMADOR       | 307       | 20           | 6.5%    | 268       | 15           | 5.6%    | +0.9%         | +5           |
| BUTTE        | 2,936     | 118          | 4.0%    | 2,735     | 170          | 6.2%    | -2.2%         | -52          |
| CALAVERAS    | 419       | 3            | 0.7%    | 408       | 41           | 10.0%   | -9.3%         | -38          |
| COLUSA       | 408       | 1            | 0.2%    | 403       | 3            | 0.7%    | -0.5%         | -2           |
| CONTRA COSTA | 15,398    | 415          | 2.7%    | 14,651    | 602          | 4.1%    | -1.4%         | -187         |
| DEL NORTE    | 344       | 10           | 2.9%    | 331       | 8            | 2.4%    | +0.5%         | +2           |
| EL DORADO    | 2,246     | 46           | 2.0%    | 2,195     | 41           | 1.9%    | +0.1%         | +5           |
| FRESNO       | 18,763    | 512          | 2.7%    | 17,965    | 658          | 3.7%    | -1.0%         | -146         |
| GLENN        | 483       | 10           | 2.1%    | 312       | 7            | 2.2%    | -0.1%         | +3           |
| HUMBOLDT     | 1,741     | 121          | 7.0%    | 1,613     | 210          | 13.0%   | -6.0%         | -89          |
| IMPERIAL     | 3,200     | 126          | 3.9%    | 3,110     | 188          | 6.0%    | -2.1%         | -62          |
| INYO         | 209       | 1            | 0.5%    | 243       | 5            | 2.1%    | -1.6%         | -4           |
| KERN         | 16,492    | 471          | 2.9%    | 16,098    | 669          | 4.2%    | -1.3%         | -198         |
| KINGS        | 2,588     | 52           | 2.0%    | 2,722     | 62           | 2.3%    | -0.3%         | -10          |
| LAKE         | 804       | 31           | 3.9%    | 845       | 36           | 4.3%    | -0.4%         | -5           |
| LASSEN       | 378       | 14           | 3.7%    | 358       | 30           | 8.4%    | -4.7%         | -16          |
| LOS ANGELES  | 134,209   | 11,061       | 8.2%    | 130,146   | 15,983       | 12.3%   | -4.1%         | -4,922       |
| MADERA       | 2,797     | 68           | 2.4%    | 2,246     | 108          | 4.8%    | -2.4%         | -40          |
| MARIN        | 3,306     | 176          | 5.3%    | 3,334     | 307          | 9.2%    | -3.9%         | -131         |
| MARIPOSA     | 157       | 8            | 5.1%    | 168       | 10           | 6.0%    | -0.9%         | -2           |
| MENDOCINO    | 1,191     | 52           | 4.4%    | 1,191     | 146          | 12.3%   | -7.9%         | -94          |
| MERCED       | 5,016     | 102          | 2.0%    | 5,199     | 198          | 3.8%    | -1.8%         | -96          |
| MODOC        | 128       | 13           | 10.2%   | 111       | 5            | 4.5%    | +5.7%         | +8           |
| MONO         | 144       | 1            | 0.7%    | 148       | 4            | 2.7%    | -2.0%         | -3           |
| MONTEREY     | 6,960     | 245          | 3.5%    | 6,984     | 686          | 9.8%    | -6.3%         | -441         |
| NAPA         | 1,750     | 54           | 3.1%    | 1,921     | 61           | 3.2%    | -0.1%         | -7           |
| NEVADA       | 896       | 30           | 3.3%    | 854       | 46           | 5.4%    | -2.0%         | -16          |

KINDERGARTEN ASSESSMENT - CALIFORNIA, 2015-2016

TABLE 5: NUMBER AND PERCENTAGE OF 'CONDITIONAL' STUDENTS, AND 1 YEAR PERCENTAGE POINT CHANGE  
AND NUMBER OF 'CONDITIONAL' STUDENTS COMPARED TO LAST YEAR, BY COUNTY

|                 | 2015-2016 |              |         | 2014-2015 |              |         | 1-YEAR CHANGE |              |
|-----------------|-----------|--------------|---------|-----------|--------------|---------|---------------|--------------|
|                 | TOTAL     | CONDITIONALS | PERCENT | TOTAL     | CONDITIONALS | PERCENT | PERCENT       | CONDITIONALS |
| STATE TOTAL     | 551,123   | 24,424       | 4.4%    | 535,234   | 36,731       | 6.9%    | -2.5%         | -12,307      |
| COUNTY          |           |              |         |           |              |         |               |              |
| ORANGE          | 42,007    | 1,749        | 4.2%    | 42,076    | 2,806        | 6.7%    | -2.5%         | -1,057       |
| PLACER          | 5,756     | 292          | 5.1%    | 5,524     | 286          | 5.2%    | -0.1%         | +6           |
| PLUMAS          | 188       | 6            | 3.2%    | 149       | 13           | 8.7%    | -5.5%         | -7           |
| RIVERSIDE       | 34,506    | 819          | 2.4%    | 34,377    | 1,025        | 3.0%    | -0.6%         | -206         |
| SACRAMENTO      | 20,649    | 1,453        | 7.0%    | 19,527    | 1,536        | 7.9%    | -0.8%         | -83          |
| SAN BENITO      | 908       | 19           | 2.1%    | 897       | 16           | 1.8%    | +0.3%         | +3           |
| SAN BERNARDINO  | 34,118    | 938          | 2.7%    | 33,818    | 1,317        | 3.9%    | -1.1%         | -379         |
| SAN DIEGO       | 45,646    | 1,088        | 2.4%    | 43,827    | 1,744        | 4.0%    | -1.6%         | -656         |
| SAN FRANCISCO   | 6,524     | 382          | 5.9%    | 6,560     | 762          | 11.6%   | -5.8%         | -380         |
| SAN JOAQUIN     | 12,201    | 267          | 2.2%    | 11,742    | 367          | 3.1%    | -0.9%         | -100         |
| SAN LUIS OBISPO | 3,147     | 140          | 4.4%    | 2,982     | 207          | 6.9%    | -2.5%         | -67          |
| SAN MATEO       | 9,757     | 295          | 3.0%    | 9,343     | 412          | 4.4%    | -1.4%         | -117         |
| SANTA BARBARA   | 6,721     | 92           | 1.4%    | 6,641     | 168          | 2.5%    | -1.2%         | -76          |
| SANTA CLARA     | 26,269    | 842          | 3.2%    | 24,541    | 1,203        | 4.9%    | -1.7%         | -361         |
| SANTA CRUZ      | 3,567     | 110          | 3.1%    | 3,680     | 243          | 6.6%    | -3.5%         | -133         |
| SHASTA          | 2,232     | 160          | 7.2%    | 2,245     | 173          | 7.7%    | -0.5%         | -13          |
| SIERRA          | 27        | 0            | 0.0%    | 28        | 0            | 0.0%    | -             | -            |
| SISKIYOU        | 488       | 35           | 7.2%    | 510       | 57           | 11.2%   | -4.0%         | -22          |
| SOLANO          | 5,592     | 185          | 3.3%    | 5,273     | 192          | 3.6%    | -0.3%         | -7           |
| SONOMA          | 6,757     | 169          | 2.5%    | 6,552     | 275          | 4.2%    | -1.7%         | -106         |
| STANISLAUS      | 9,397     | 221          | 2.4%    | 8,921     | 282          | 3.2%    | -0.8%         | -61          |
| SUTTER          | 1,909     | 31           | 1.6%    | 1,852     | 63           | 3.4%    | -1.8%         | -32          |
| TEHAMA          | 1,011     | 27           | 2.7%    | 987       | 19           | 1.9%    | +0.7%         | +8           |
| TRINITY         | 139       | 12           | 8.6%    | 114       | 11           | 9.6%    | -1.0%         | +1           |
| TULARE          | 9,267     | 171          | 1.8%    | 9,315     | 221          | 2.4%    | -0.5%         | -50          |
| TUOLUMNE        | 569       | 79           | 13.9%   | 462       | 69           | 14.9%   | -1.1%         | +10          |
| VENTURA         | 12,718    | 374          | 2.9%    | 12,163    | 825          | 6.8%    | -3.8%         | -451         |
| YOLO            | 2,725     | 128          | 4.7%    | 2,504     | 103          | 4.1%    | +0.6%         | +25          |
| YUBA            | 1,408     | 45           | 3.2%    | 1,264     | 23           | 1.8%    | +1.4%         | +22          |

KINDERGARTEN ASSESSMENT - CALIFORNIA, 2015-2016

TABLE 6: NUMBER AND PERCENTAGE OF PBE STUDENTS AND PERCENTAGE POINT CHANGE COMPARED TO LAST YEAR,  
BY COUNTY

|              | TOTAL<br>STUDENTS | STUDENTS WITH PBE           |         |           |         |           |         |         |                               |
|--------------|-------------------|-----------------------------|---------|-----------|---------|-----------|---------|---------|-------------------------------|
|              |                   | PBE TYPE                    |         |           |         | TOTAL PBE |         |         |                               |
|              |                   | HEALTH CARE<br>PRACTITIONER |         | RELIGIOUS |         | 2015-16   |         | 2014-15 | PERCENTAGE<br>POINT<br>CHANGE |
|              |                   | NUMBER                      | PERCENT | NUMBER    | PERCENT | NUMBER    | PERCENT | PERCENT |                               |
| STATE TOTAL  | 551,123           | 9,987                       | 1.81%   | 3,099     | 0.56%   | 13,086    | 2.37%   | 2.54%   | -0.17%                        |
| COUNTY       |                   |                             |         |           |         |           |         |         |                               |
| ALAMEDA      | 21644             | 214                         | 0.99%   | 49        | 0.23%   | 263       | 1.22%   | 1.54%   | -0.33%                        |
| ALPINE       | 6                 | 0                           | 0.00%   | 0         | 0.00%   | 0         | 0.00%   | 0.00%   | 0.00%                         |
| AMADOR       | 307               | 8                           | 2.61%   | 2         | 0.65%   | 10        | 3.26%   | 2.61%   | +0.65%                        |
| BUTTE        | 2936              | 114                         | 3.88%   | 42        | 1.43%   | 156       | 5.31%   | 5.96%   | -0.65%                        |
| CALAVERAS    | 419               | 28                          | 6.68%   | 16        | 3.82%   | 44        | 10.50%  | 8.33%   | +2.17%                        |
| COLUSA       | 408               | 0                           | 0.00%   | 0         | 0.00%   | 0         | 0.00%   | 0.50%   | -0.50%                        |
| CONTRA COSTA | 15398             | 231                         | 1.50%   | 73        | 0.47%   | 304       | 1.97%   | 1.90%   | +0.07%                        |
| DEL NORTE    | 344               | 13                          | 3.78%   | 17        | 4.94%   | 30        | 8.72%   | 7.55%   | +1.17%                        |
| EL DORADO    | 2246              | 108                         | 4.81%   | 53        | 2.36%   | 161       | 7.17%   | 7.61%   | -0.44%                        |
| FRESNO       | 18763             | 114                         | 0.61%   | 67        | 0.36%   | 181       | 0.96%   | 1.03%   | -0.07%                        |
| GLENN        | 483               | 10                          | 2.07%   | 2         | 0.41%   | 12        | 2.48%   | 0.96%   | +1.52%                        |
| HUMBOLDT     | 1741              | 142                         | 8.16%   | 39        | 2.24%   | 181       | 10.40%  | 10.85%  | -0.45%                        |
| IMPERIAL     | 3200              | 10                          | 0.31%   | 7         | 0.22%   | 17        | 0.53%   | 0.45%   | +0.08%                        |
| INYO         | 209               | 0                           | 0.00%   | 2         | 0.96%   | 2         | 0.96%   | 2.06%   | -1.10%                        |
| KERN         | 16492             | 176                         | 1.07%   | 71        | 0.43%   | 247       | 1.50%   | 1.77%   | -0.27%                        |
| KINGS        | 2588              | 21                          | 0.81%   | 3         | 0.12%   | 24        | 0.93%   | 0.81%   | -0.12%                        |
| LAKE         | 804               | 16                          | 1.99%   | 4         | 0.50%   | 20        | 2.49%   | 4.85%   | -2.36%                        |
| LASSEN       | 378               | 12                          | 3.17%   | 24        | 6.35%   | 36        | 9.52%   | 7.82%   | +1.70%                        |
| LOS ANGELES  | 134,209           | 1485                        | 1.11%   | 510       | 0.38%   | 1,995     | 1.49%   | 1.62%   | -0.13%                        |
| MADERA       | 2,797             | 27                          | 0.97%   | 13        | 0.46%   | 40        | 1.43%   | 2.00%   | -0.57%                        |
| MARIN        | 3,306             | 195                         | 5.90%   | 1         | 0.03%   | 196       | 5.93%   | 6.45%   | -0.52%                        |
| MARIPOSA     | 157               | 17                          | 10.83%  | 4         | 2.55%   | 21        | 13.38%  | 14.29%  | -0.91%                        |
| MENDOCINO    | 1,191             | 63                          | 5.29%   | 22        | 1.85%   | 85        | 7.14%   | 6.30%   | -0.84%                        |
| MERCED       | 5,016             | 25                          | 0.50%   | 14        | 0.28%   | 39        | 0.78%   | 0.98%   | -0.20%                        |
| MODOC        | 128               | 0                           | 0.00%   | 1         | 0.78%   | 1         | 0.78%   | 2.70%   | -1.92%                        |
| MONO         | 144               | 12                          | 8.33%   | 4         | 2.78%   | 16        | 11.11%  | 10.81%  | -0.30%                        |
| MONTEREY     | 6,960             | 70                          | 1.01%   | 28        | 0.40%   | 98        | 1.41%   | 1.60%   | -0.19%                        |
| NAPA         | 1,750             | 35                          | 2.00%   | 23        | 1.31%   | 58        | 3.31%   | 3.18%   | +0.14%                        |
| NEVADA       | 896               | 151                         | 16.85%  | 14        | 1.56%   | 165       | 18.42%  | 21.55%  | -3.13%                        |

KINDERGARTEN ASSESSMENT - CALIFORNIA, 2015-2016

TABLE 6: NUMBER AND PERCENTAGE OF PBE STUDENTS AND PERCENTAGE POINT CHANGE COMPARED TO LAST YEAR,  
BY COUNTY

|                 | TOTAL<br>STUDENTS | STUDENTS WITH PBE           |         |           |         |           |         |         |                               |
|-----------------|-------------------|-----------------------------|---------|-----------|---------|-----------|---------|---------|-------------------------------|
|                 |                   | PBE TYPE                    |         |           |         | TOTAL PBE |         |         |                               |
|                 |                   | HEALTH CARE<br>PRACTITIONER |         | RELIGIOUS |         | 2015-16   |         | 2014-15 | PERCENTAGE<br>POINT<br>CHANGE |
|                 |                   | NUMBER                      | PERCENT | NUMBER    | PERCENT | NUMBER    | PERCENT | PERCENT |                               |
| STATE TOTAL     | 551,123           | 9,987                       | 1.81%   | 3,099     | 0.56%   | 13,086    | 2.37%   | 2.54%   | -0.17%                        |
| COUNTY          |                   |                             |         |           |         |           |         |         |                               |
| ORANGE          | 42,007            | 1,072                       | 2.55%   | 198       | 0.47%   | 1,270     | 3.02%   | 2.99%   | +0.03%                        |
| PLACER          | 5,756             | 264                         | 4.59%   | 79        | 1.37%   | 343       | 5.96%   | 8.00%   | -2.04%                        |
| PLUMAS          | 188               | 17                          | 9.04%   | 0         | 0.00%   | 17        | 9.04%   | 6.71%   | +2.33%                        |
| RIVERSIDE       | 34,506            | 589                         | 1.71%   | 139       | 0.40%   | 728       | 2.11%   | 2.48%   | -0.37%                        |
| SACRAMENTO      | 20,649            | 564                         | 2.73%   | 274       | 1.33%   | 838       | 4.06%   | 4.54%   | -0.48%                        |
| SAN BENITO      | 908               | 10                          | 1.10%   | 1         | 0.11%   | 11        | 1.21%   | 1.23%   | -0.01%                        |
| SAN BERNARDINO  | 34,118            | 468                         | 1.37%   | 183       | 0.54%   | 651       | 1.91%   | 2.18%   | -0.27%                        |
| SAN DIEGO       | 45,646            | 1,177                       | 2.58%   | 454       | 0.99%   | 1,631     | 3.57%   | 3.46%   | +0.11%                        |
| SAN FRANCISCO   | 6,524             | 77                          | 1.18%   | 19        | 0.29%   | 96        | 1.47%   | 1.80%   | -0.33%                        |
| SAN JOAQUIN     | 12,201            | 115                         | 0.94%   | 44        | 0.36%   | 159       | 1.30%   | 1.13%   | -0.17%                        |
| SAN LUIS OBISPO | 3,147             | 145                         | 4.61%   | 29        | 0.92%   | 174       | 5.53%   | 5.53%   | 0.00%                         |
| SAN MATEO       | 9,757             | 150                         | 1.54%   | 9         | 0.09%   | 159       | 1.63%   | 1.85%   | -0.22%                        |
| SANTA BARBARA   | 6,721             | 178                         | 2.65%   | 62        | 0.92%   | 240       | 3.57%   | 2.94%   | -0.63%                        |
| SANTA CLARA     | 26,269            | 323                         | 1.23%   | 114       | 0.43%   | 437       | 1.66%   | 1.57%   | -0.09%                        |
| SANTA CRUZ      | 3,567             | 250                         | 7.01%   | 63        | 1.77%   | 313       | 8.77%   | 9.35%   | -0.57%                        |
| SHASTA          | 2,232             | 145                         | 6.50%   | 42        | 1.88%   | 187       | 8.38%   | 7.53%   | -0.85%                        |
| SIERRA          | 27                | 0                           | 0.00%   | 0         | 0.00%   | 0         | 0.00%   | 0.00%   | 0.00%                         |
| SISKIYOU        | 488               | 26                          | 5.33%   | 12        | 2.46%   | 38        | 7.79%   | 6.08%   | -1.71%                        |
| SOLANO          | 5,592             | 77                          | 1.38%   | 7         | 0.13%   | 84        | 1.50%   | 1.80%   | -0.30%                        |
| SONOMA          | 6,757             | 298                         | 4.41%   | 29        | 0.43%   | 327       | 4.84%   | 5.54%   | -0.70%                        |
| STANISLAUS      | 9,397             | 162                         | 1.72%   | 53        | 0.56%   | 215       | 2.29%   | 3.25%   | -0.96%                        |
| SUTTER          | 1,909             | 86                          | 4.50%   | 64        | 3.35%   | 150       | 7.86%   | 5.83%   | +2.02%                        |
| TEHAMA          | 1,011             | 27                          | 2.67%   | 1         | 0.10%   | 28        | 2.77%   | 4.15%   | -1.38%                        |
| TRINITY         | 139               | 15                          | 10.79%  | 5         | 3.60%   | 20        | 14.39%  | 8.77%   | +5.62%                        |
| TULARE          | 9,267             | 70                          | 0.76%   | 13        | 0.14%   | 83        | 0.90%   | 0.96%   | -0.06%                        |
| TUOLUMNE        | 569               | 27                          | 4.75%   | 20        | 3.51%   | 47        | 8.26%   | 7.36%   | -0.90%                        |
| VENTURA         | 12,718            | 247                         | 1.94%   | 69        | 0.54%   | 316       | 2.48%   | 3.05%   | -0.57%                        |
| YOLO            | 2,725             | 89                          | 3.27%   | 6         | 0.22%   | 95        | 3.49%   | 3.23%   | -0.25%                        |
| YUBA            | 1,408             | 22                          | 1.56%   | 5         | 0.36%   | 27        | 1.92%   | 2.22%   | -0.30%                        |



KINDERGARTEN ASSESSMENT - CALIFORNIA, 2015-2016  
TABLE 7: NUMBER AND PERCENTAGE OF FULLY VACCINATED STUDENTS BY VACCINE SERIES,  
BY COUNTY

|              | TOTAL STUDENTS | DTP 4+  |         | POLIO 3+ |         | MMR 2   |         | HEP B 3+ |         | VAR 1+  |         |
|--------------|----------------|---------|---------|----------|---------|---------|---------|----------|---------|---------|---------|
|              | NUMBER         | NUMBER  | PERCENT | NUMBER   | PERCENT | NUMBER  | PERCENT | NUMBER   | PERCENT | NUMBER  | PERCENT |
| STATE TOTAL  | 551,123        | 519,114 | 94.2%   | 521,935  | 94.7%   | 520,974 | 94.5%   | 527,991  | 95.8%   | 530,716 | 96.3%   |
| COUNTY       |                |         |         |          |         |         |         |          |         |         |         |
| ALAMEDA      | 21644          | 20,952  | 96.8%   | 21,018   | 97.1%   | 21,012  | 97.1%   | 21,074   | 97.4%   | 21,175  | 97.8%   |
| ALPINE       | 6              | 6       | 100.0%  | 6        | 100.0%  | 6       | 100.0%  | 6        | 100.0%  | 6       | 100.0%  |
| AMADOR       | 307            | 275     | 89.6%   | 276      | 89.9%   | 273     | 88.9%   | 286      | 93.2%   | 287     | 93.5%   |
| BUTTE        | 2936           | 2,683   | 91.4%   | 2,706    | 92.2%   | 2,681   | 91.3%   | 2,734    | 93.1%   | 2,738   | 93.3%   |
| CALAVERAS    | 419            | 371     | 88.5%   | 372      | 88.8%   | 372     | 88.8%   | 373      | 89.0%   | 373     | 89.0%   |
| COLUSA       | 408            | 407     | 99.8%   | 407      | 99.8%   | 407     | 99.8%   | 408      | 100.0%  | 407     | 99.8%   |
| CONTRA COSTA | 15398          | 14,776  | 96.0%   | 14,811   | 96.2%   | 14,828  | 96.3%   | 14,926   | 96.9%   | 14,980  | 97.3%   |
| DEL NORTE    | 344            | 306     | 89.0%   | 305      | 88.7%   | 306     | 89.0%   | 307      | 89.2%   | 309     | 89.8%   |
| EL DORADO    | 2246           | 2,042   | 90.9%   | 2,053    | 91.4%   | 2,054   | 91.5%   | 2,058    | 91.6%   | 2,071   | 92.2%   |
| FRESNO       | 18763          | 18,179  | 96.9%   | 18,264   | 97.3%   | 18,279  | 97.4%   | 18,425   | 98.2%   | 18,485  | 98.5%   |
| GLENN        | 483            | 459     | 95.0%   | 462      | 95.7%   | 460     | 95.2%   | 466      | 96.5%   | 466     | 96.5%   |
| HUMBOLDT     | 1741           | 1,467   | 84.3%   | 1,467    | 84.3%   | 1,471   | 84.5%   | 1,489    | 85.5%   | 1,514   | 87.0%   |
| IMPERIAL     | 3200           | 3,095   | 96.7%   | 3,112    | 97.3%   | 3,094   | 96.7%   | 3,147    | 98.3%   | 3,155   | 98.6%   |
| INYO         | 209            | 207     | 99.0%   | 207      | 99.0%   | 206     | 98.6%   | 207      | 99.0%   | 206     | 98.6%   |
| KERN         | 16492          | 15,867  | 96.2%   | 15,995   | 97.0%   | 15,933  | 96.6%   | 16,063   | 97.4%   | 16,144  | 97.9%   |
| KINGS        | 2588           | 2,517   | 97.3%   | 2,542    | 98.2%   | 2,547   | 98.4%   | 2,550    | 98.5%   | 2,558   | 98.8%   |
| LAKE         | 804            | 757     | 94.2%   | 757      | 94.2%   | 755     | 93.9%   | 770      | 95.8%   | 778     | 96.8%   |
| LASSEN       | 378            | 329     | 87.0%   | 331      | 87.6%   | 331     | 87.6%   | 334      | 88.4%   | 336     | 88.9%   |
| LOS ANGELES  | 134209         | 124,321 | 92.6%   | 125,031  | 93.2%   | 124,562 | 92.8%   | 127,894  | 95.3%   | 128,632 | 95.8%   |
| MADERA       | 2,797          | 2,693   | 96.3%   | 2,717    | 97.1%   | 2,722   | 97.3%   | 2,732    | 97.7%   | 2,738   | 97.9%   |
| MARIN        | 3,306          | 2,993   | 90.5%   | 3,011    | 91.1%   | 3,009   | 91.0%   | 3,033    | 91.7%   | 3,069   | 92.8%   |
| MARIPOSA     | 157            | 129     | 82.2%   | 133      | 84.7%   | 131     | 83.4%   | 134      | 85.4%   | 135     | 86.0%   |
| MENDOCINO    | 1,191          | 1,054   | 88.5%   | 1,061    | 89.1%   | 1,071   | 89.9%   | 1,070    | 89.8%   | 1,081   | 90.8%   |
| MERCED       | 5,016          | 4,868   | 97.0%   | 4,883    | 97.3%   | 4,883   | 97.3%   | 4,911    | 97.9%   | 4,931   | 98.3%   |
| MODOC        | 128            | 113     | 88.3%   | 116      | 90.6%   | 114     | 89.1%   | 120      | 93.8%   | 120     | 93.8%   |
| MONO         | 144            | 127     | 88.2%   | 127      | 88.2%   | 127     | 88.2%   | 128      | 88.9%   | 128     | 88.9%   |
| MONTEREY     | 6,960          | 6,661   | 95.7%   | 6,697    | 96.2%   | 6,704   | 96.3%   | 6,764    | 97.2%   | 6,790   | 97.6%   |
| NAPA         | 1,750          | 1,654   | 94.5%   | 1,659    | 94.8%   | 1,651   | 94.3%   | 1,670    | 95.4%   | 1,686   | 96.3%   |
| NEVADA       | 896            | 701     | 78.2%   | 702      | 78.3%   | 701     | 78.2%   | 711      | 79.4%   | 709     | 79.1%   |

KINDERGARTEN ASSESSMENT - CALIFORNIA, 2015-2016  
TABLE 7: NUMBER AND PERCENTAGE OF FULLY VACCINATED STUDENTS BY VACCINE SERIES,  
BY COUNTY

|                 | TOTAL STUDENTS | DTP 4+  |         | POLIO 3+ |         | MMR 2   |         | HEP B 3+ |         | VAR 1+  |         |
|-----------------|----------------|---------|---------|----------|---------|---------|---------|----------|---------|---------|---------|
|                 | NUMBER         | NUMBER  | PERCENT | NUMBER   | PERCENT | NUMBER  | PERCENT | NUMBER   | PERCENT | NUMBER  | PERCENT |
| STATE TOTAL     | 551,123        | 519,114 | 94.2%   | 521,935  | 94.7%   | 520,974 | 94.5%   | 527,991  | 95.8%   | 530,716 | 96.3%   |
| COUNTY          |                |         |         |          |         |         |         |          |         |         |         |
| ORANGE          | 42,007         | 39,374  | 93.7%   | 39,621   | 94.3%   | 39,568  | 94.2%   | 40,130   | 95.5%   | 40,334  | 96.0%   |
| PLACER          | 5,756          | 5,208   | 90.5%   | 5,242    | 91.1%   | 5,207   | 90.5%   | 5,307    | 92.2%   | 5,369   | 93.3%   |
| PLUMAS          | 188            | 164     | 87.2%   | 163      | 86.7%   | 163     | 86.7%   | 168      | 89.4%   | 167     | 88.8%   |
| RIVERSIDE       | 34,506         | 33,073  | 95.8%   | 33,285   | 96.5%   | 33,258  | 96.4%   | 33,433   | 96.9%   | 33,587  | 97.3%   |
| SACRAMENTO      | 20,649         | 18,533  | 89.8%   | 18,815   | 91.1%   | 18,650  | 90.3%   | 19,354   | 93.7%   | 19,506  | 94.5%   |
| SAN BENITO      | 908            | 878     | 96.7%   | 878      | 96.7%   | 875     | 96.4%   | 884      | 97.4%   | 887     | 97.7%   |
| SAN BERNARDINO  | 34,118         | 32,592  | 95.5%   | 32,803   | 96.1%   | 32,757  | 96.0%   | 32,960   | 96.6%   | 33,112  | 97.1%   |
| SAN DIEGO       | 45,646         | 43,078  | 94.4%   | 43,212   | 94.7%   | 43,184  | 94.6%   | 43,360   | 95.0%   | 43,596  | 95.5%   |
| SAN FRANCISCO   | 6,524          | 6,120   | 93.8%   | 6,152    | 94.3%   | 6,165   | 94.5%   | 6,241    | 95.7%   | 6,270   | 96.1%   |
| SAN JOAQUIN     | 12,201         | 11,810  | 96.8%   | 11,845   | 97.1%   | 11,828  | 96.9%   | 11,898   | 97.5%   | 11,934  | 97.8%   |
| SAN LUIS OBISPO | 3,147          | 2,859   | 90.8%   | 2,864    | 91.0%   | 2,891   | 91.9%   | 2,937    | 93.3%   | 2,949   | 93.7%   |
| SAN MATEO       | 9,757          | 9,396   | 96.3%   | 9,452    | 96.9%   | 9,420   | 96.5%   | 9,477    | 97.1%   | 9,527   | 97.6%   |
| SANTA BARBARA   | 6,721          | 6,435   | 95.7%   | 6,441    | 95.8%   | 6,428   | 95.6%   | 6,436    | 95.8%   | 6,469   | 96.3%   |
| SANTA CLARA     | 26,269         | 25,181  | 95.9%   | 25,310   | 96.3%   | 25,285  | 96.3%   | 25,518   | 97.1%   | 25,615  | 97.5%   |
| SANTA CRUZ      | 3,567          | 3,184   | 89.3%   | 3,185    | 89.3%   | 3,189   | 89.4%   | 3,171    | 88.9%   | 3,220   | 90.3%   |
| SHASTA          | 2,232          | 1,898   | 85.0%   | 1,912    | 85.7%   | 1,914   | 85.8%   | 1,993    | 89.3%   | 2,008   | 90.0%   |
| SIERRA          | 27             | 27      | 100.0%  | 27       | 100.0%  | 27      | 100.0%  | 27       | 100.0%  | 27      | 100.0%  |
| SISKIYOU        | 488            | 418     | 85.7%   | 421      | 86.3%   | 417     | 85.5%   | 426      | 87.3%   | 425     | 87.1%   |
| SOLANO          | 5,592          | 5,347   | 95.6%   | 5,388    | 96.4%   | 5,368   | 96.0%   | 5,429    | 97.1%   | 5,471   | 97.8%   |
| SONOMA          | 6,757          | 6,297   | 93.2%   | 6,302    | 93.3%   | 6,317   | 93.5%   | 6,309    | 93.4%   | 6,357   | 94.1%   |
| STANISLAUS      | 9,397          | 8,982   | 95.6%   | 9,009    | 95.9%   | 8,997   | 95.7%   | 9,089    | 96.7%   | 9,127   | 97.1%   |
| SUTTER          | 1,909          | 1,726   | 90.4%   | 1,733    | 90.8%   | 1,732   | 90.7%   | 1,740    | 91.1%   | 1,748   | 91.6%   |
| TEHAMA          | 1,011          | 959     | 94.9%   | 970      | 95.9%   | 965     | 95.5%   | 970      | 95.9%   | 971     | 96.0%   |
| TRINITY         | 139            | 109     | 78.4%   | 109      | 78.4%   | 107     | 77.0%   | 113      | 81.3%   | 114     | 82.0%   |
| TULARE          | 9,267          | 9,039   | 97.5%   | 9,081    | 98.0%   | 9,094   | 98.1%   | 9,129    | 98.5%   | 9,158   | 98.8%   |
| TUOLUMNE        | 569            | 460     | 80.8%   | 466      | 81.9%   | 462     | 81.2%   | 500      | 87.9%   | 495     | 87.0%   |
| VENTURA         | 12,718         | 12,066  | 94.9%   | 12,114   | 95.3%   | 12,114  | 95.3%   | 12,252   | 96.3%   | 12,291  | 96.6%   |
| YOLO            | 2,725          | 2,541   | 93.2%   | 2,546    | 93.4%   | 2,549   | 93.5%   | 2,576    | 94.5%   | 2,599   | 95.4%   |
| YUBA            | 1,408          | 1,351   | 96.0%   | 1,361    | 96.7%   | 1,353   | 96.1%   | 1,374    | 97.6%   | 1,376   | 97.7%   |