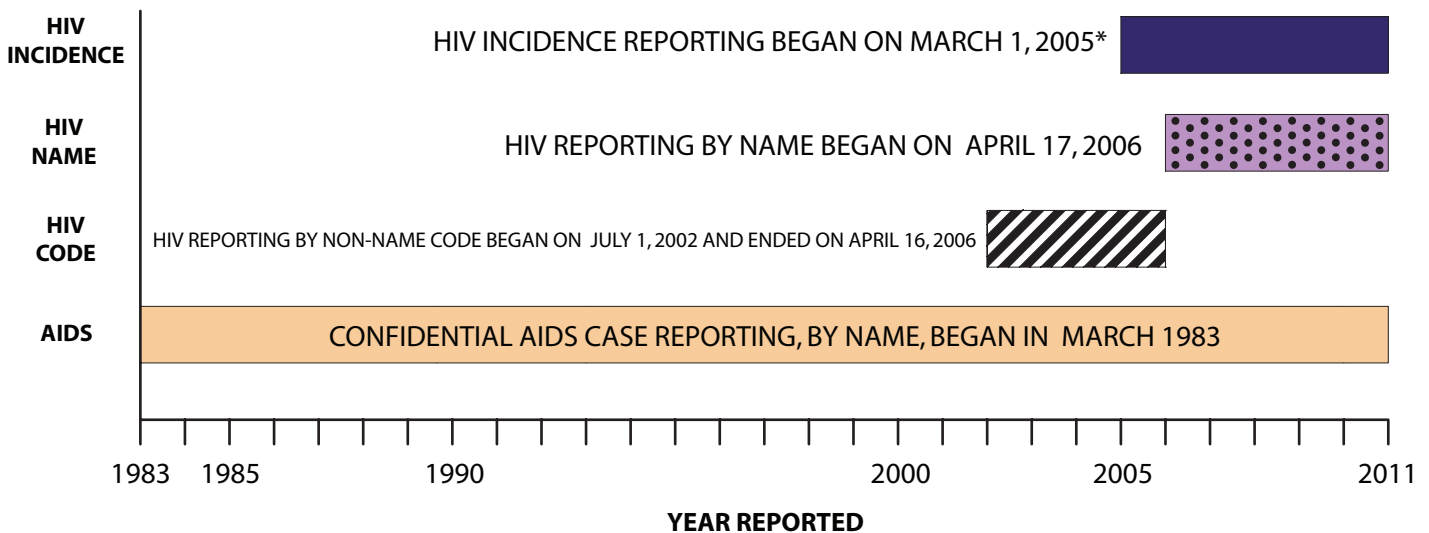


HIV/AIDS SURVEILLANCE IN CALIFORNIA

Over the years, surveillance of HIV/AIDS has evolved to adapt to changes in the HIV/AIDS epidemic and advances in diagnosis and treatment. In the beginning of the epidemic, surveillance systems across the country only reported AIDS cases. California surveillance later expanded due to increased understanding of the etiology and transmission of AIDS to include HIV reporting (see Figure 1 and 2).

- Confidential AIDS case reporting, by name, began in March 1983
- HIV Reporting was first implemented on July 1, 2002, by non-name code
- HIV reporting by name began on April 17, 2006
- HIV Incidence Surveillance reporting began on March 1, 2005

FIGURE 1. TIMELINE OF CALIFORNIA HIV/AIDS SURVEILLANCE SYSTEMS



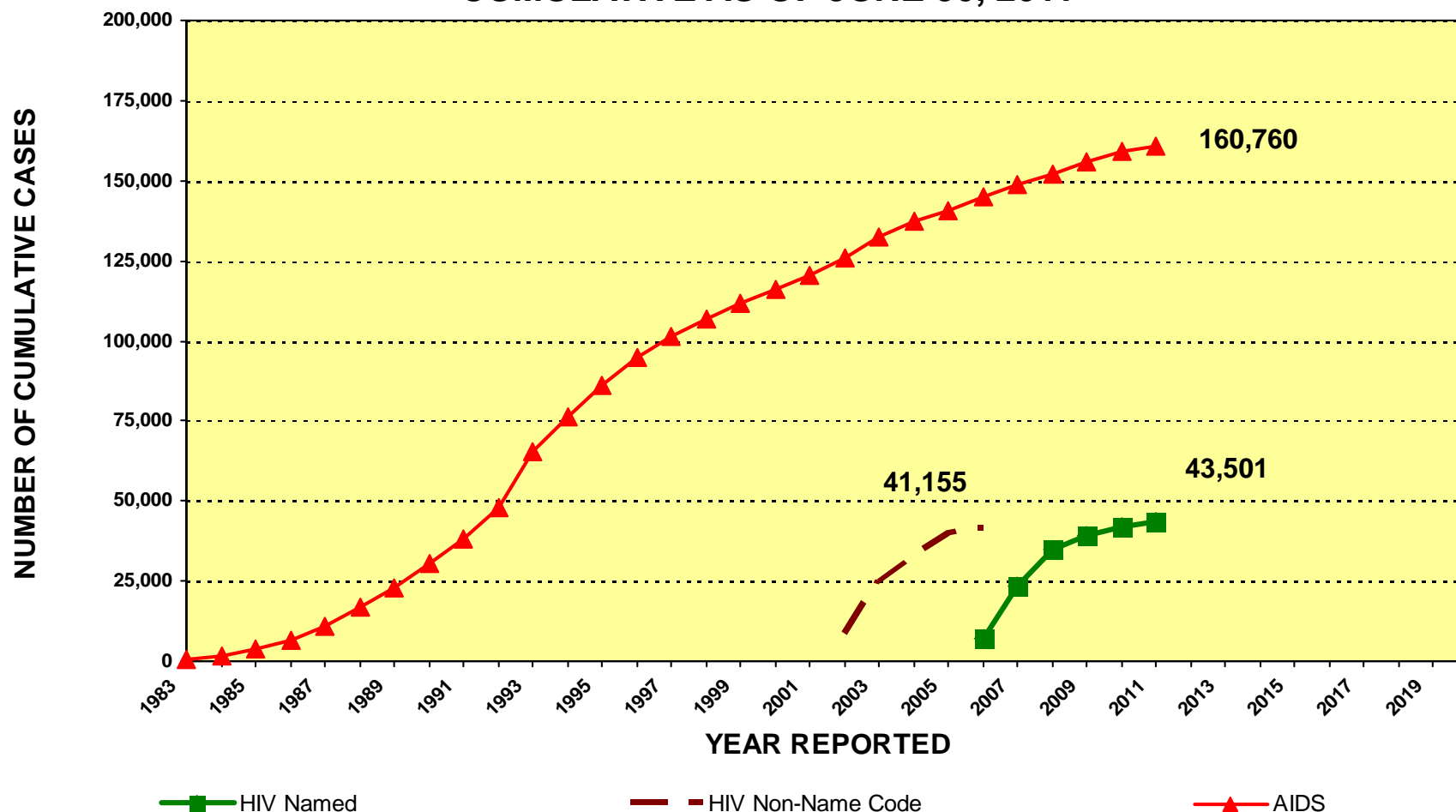
In California and the rest of the United States, HIV infections and AIDS diagnoses are reported through a combination of passive and active surveillance. Passive surveillance is conducted through state required reporting of HIV and AIDS cases by health care providers and reporting of HIV-positive test results from laboratories to Local Health Departments (LHDs). Active surveillance is accomplished through routine visits by LHD staff to hospitals, physician offices, laboratories, counseling and testing (C&T) clinics, and outpatient clinics to ensure completeness, timeliness, and accuracy of reported data. In California and other states, HIV/AIDS surveillance has historically relied heavily upon local health department staff who perform:

- active case surveillance
- on-site chart reviews
- case report completion

To improve timeliness and completeness of reporting and ensure prompt identification and response to emerging problems in the field, California Department of Public Health, Center for Infectious Diseases, Office of AIDS (OA) supports a decentralized reporting system where HIV and AIDS case reports are identified through passive and active surveillance efforts coordinated by California's 61 LHDs. HIV/AIDS surveillance case data, reported to local jurisdictions by health care providers and laboratories, is then sent to OA's HIV/AIDS Surveillance Section. Surveillance Section then submits electronic HIV/AIDS case reports, without personal identifiers, to CDC.

Figure 2.

CALIFORNIA HIV/AIDS SURVEILLANCE CASE ACCUMULATION CUMULATIVE AS OF JUNE 30, 2011



AIDS reporting began in March 1983.

HIV case totals through March 2006 represent HIV cases reported by non-name code. Beginning April 2006, the HIV case total is based on HIV cases reported by name. Due to reporting system differences, HIV cases reported by non-name code and name cannot be combined for unduplicated case counts. Statistics reported for the current quarter may vary from previous quarters due to data cleaning efforts that are ongoing at the Office of AIDS, Surveillance Section. Those data cleaning efforts include duplicate resolution of cases which may result in a net decrease for some jurisdictions comparing the current quarter to the preceding quarter.

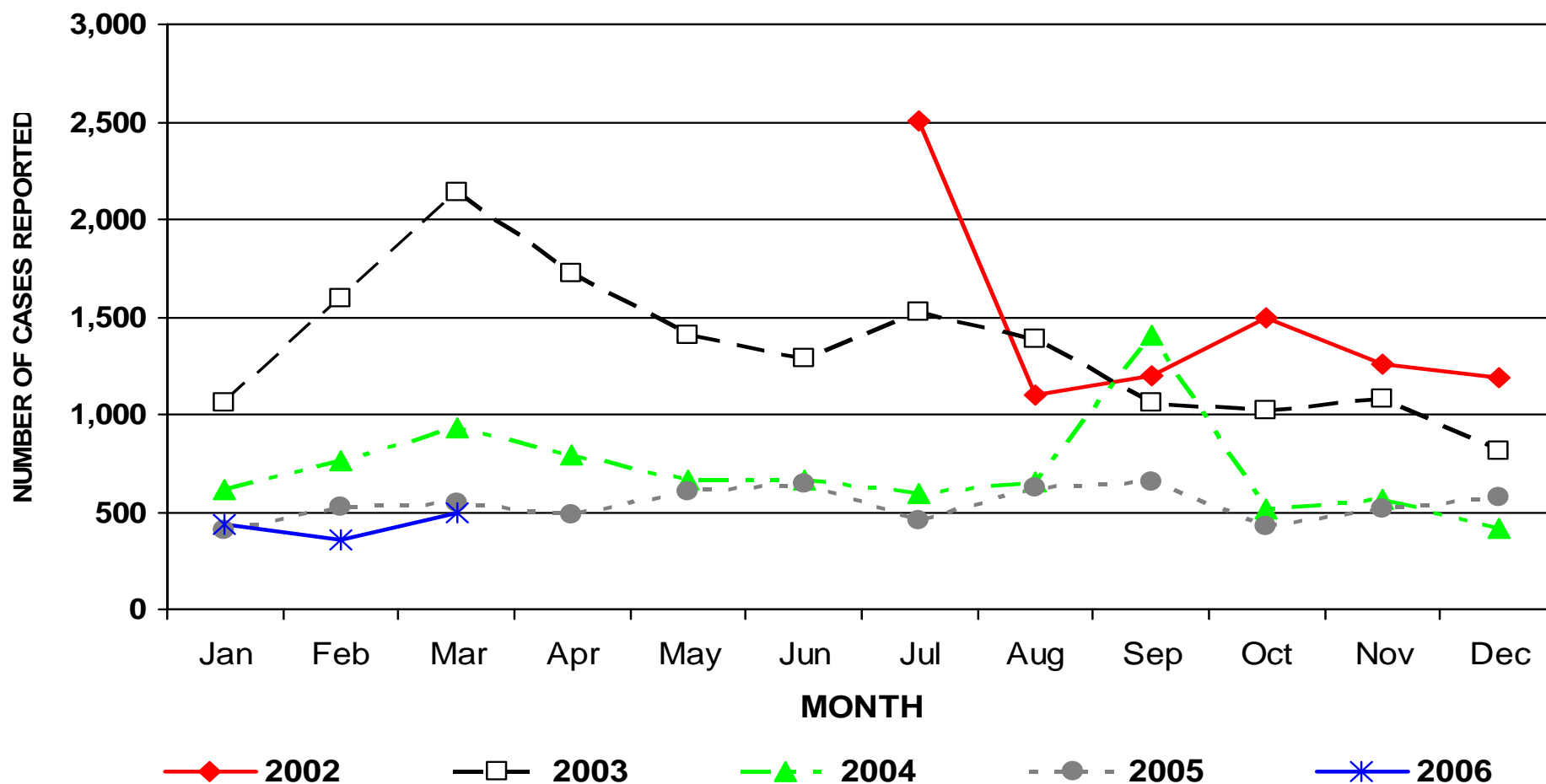
Source: California Department of Public Health, Office of AIDS, HIV/AIDS Surveillance Section, data as of June 30, 2011.

For more information, call the HIV/AIDS Surveillance Section at (916) 449-5954.



FIGURE 3.

CALIFORNIA HIV NON-NAME-CODE-BASED CASES BY MONTH AND YEAR REPORTED JULY 1, 2002 THROUGH MARCH 31, 2006



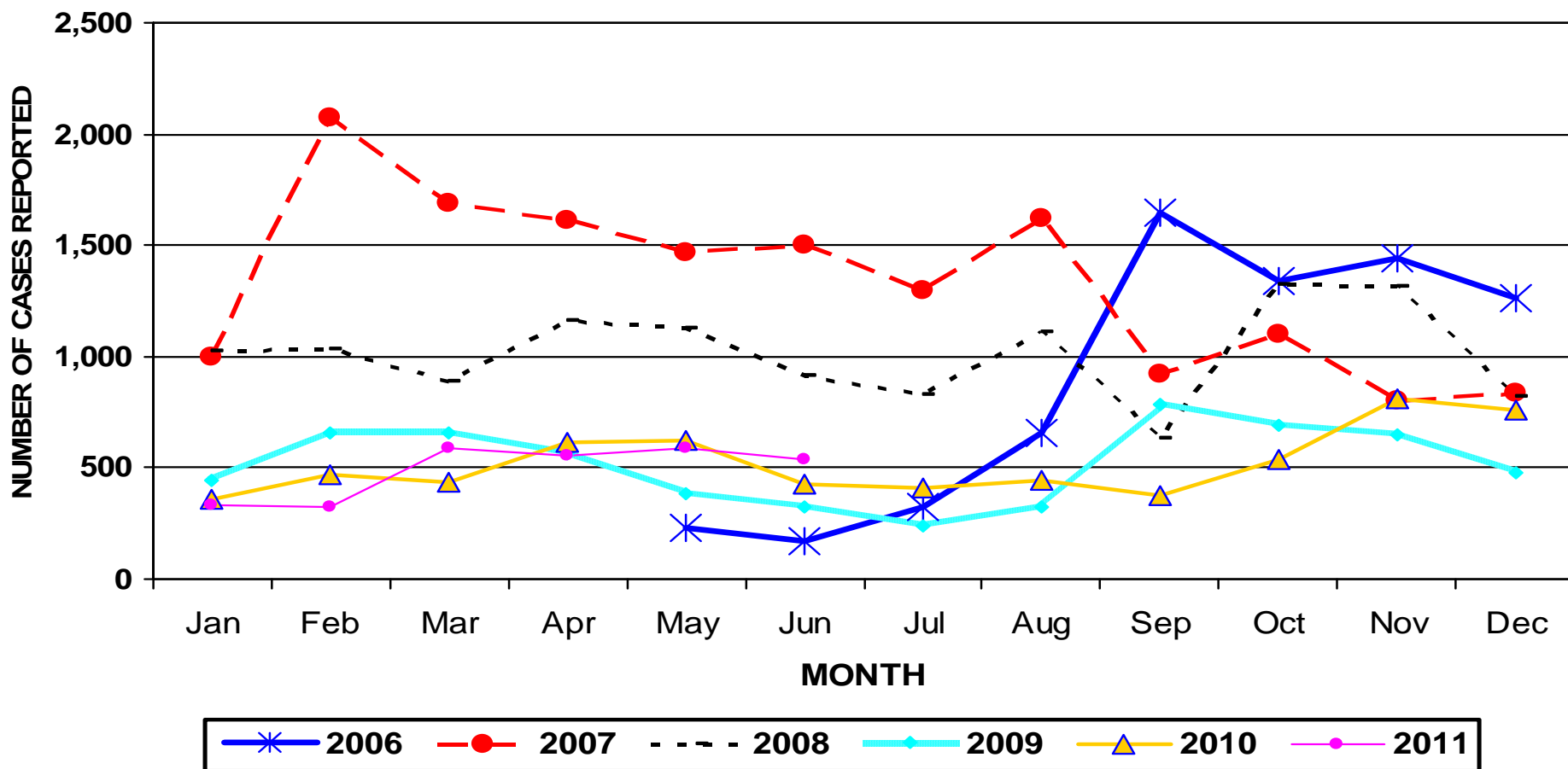
HIV case totals through March 2006 represent HIV cases reported by non-name code. Beginning April 2006, HIV case total are based on HIV cases reported by name. Due to reporting system differences, HIV cases reported by non-name code and name cannot be combined for unduplicated case counts.

Source: California Department of Public Health, Office of AIDS, HIV/AIDS Surveillance Section, data as of March 31, 2006.
For more information, call the HIV/AIDS Surveillance Section at (916) 449-5954.



FIGURE 4.

CALIFORNIA HIV NAME-BASED CASES BY MONTH AND YEAR REPORTED APRIL 17, 2006 THROUGH JUNE 30, 2011



HIV named-based reporting began in April 2006.

HIV case totals which were reported from July 2002 through March 2006 represent HIV cases reported by non-name code. Due to reporting system differences, HIV cases reported by non-name code and name cannot be combined for unduplicated case counts.

Source: California Department of Public Health, Office of AIDS, HIV/AIDS Surveillance Section, data as of June 30, 2011.

For more information, call the HIV/AIDS Surveillance Section at (916) 449-5954.



SEMI-ANNUAL REPORT OF HIV/AIDS CASES BY COUNTY IN CALIFORNIA

CUMULATIVE AS OF JUNE 30, 2011

TABLE 1.

COUNTY	HIV				AIDS				COUNTY	HIV				AIDS			
	Total Cases	Living Cases	Deceased		Total Cases	Living Cases	Deceased			Total Cases	Living Cases	Deceased		Total Cases	Living Cases	Deceased	
			Number	%			Number	%				Number	%			Number	%
Alameda	1,488	1,452	36	2	8,213	3,688	4,525	55	Orange	2,918	2,731	187	6	7,897	3,849	4,048	51
Berkeley	112	112	0	0	678	262	416	61	Placer	45	44	1	2	196	95	101	52
Alpine	0	0	0	0	0	0	0	0	Plumas	2	2	0	0	12	5	7	58
Amador	12	12	0	0	52	24	28	54	Riverside	1,531	1,484	47	3	6,011	3,251	2,760	46
Butte	75	68	7	9	277	128	149	54	Sacramento	1,359	1,319	40	3	3,952	1,767	2,185	55
Calaveras	6	6	0	0	22	11	11	50	San Benito	11	10	1	9	48	25	23	48
Colusa	1	1	0	0	14	2	12	86	San Bernardino	1,562	1,462	100	6	4,155	1,960	2,195	53
Contra Costa	708	667	41	6	3,049	1,254	1,795	59	San Diego	4,715	4,563	152	3	14,646	7,125	7,521	51
Del Norte	10	10	0	0	39	23	16	41	San Francisco	5,917	5,584	333	6	28,935	9,495	19,440	67
El Dorado	66	64	2	3	198	72	126	64	San Joaquin	494	487	7	1	1,330	685	645	48
Fresno	501	487	14	3	1,854	917	937	51	San Luis Obispo	150	149	1	1	617	310	307	50
Glenn	6	5	1	17	17	8	9	53	San Mateo	429	420	9	2	2,324	928	1,396	60
Humboldt	68	65	3	4	247	91	156	63	Santa Barbara	154	150	4	3	893	365	528	59
Imperial	73	71	2	3	242	145	97	40	Santa Clara	865	851	14	2	4,437	2,224	2,213	50
Inyo	2	2	0	0	18	9	9	50	Santa Cruz	146	142	4	3	639	274	365	57
Kern	665	646	19	3	2,006	1,269	737	37	Shasta	43	41	2	5	188	80	108	57
Kings	81	78	3	4	237	139	98	41	Sierra	1	1	0	0	4	0	4	100
Lake	19	18	1	5	158	67	91	58	Siskiyou	8	7	1	13	46	18	28	61
Lassen	11	10	1	9	60	30	30	50	Solano	411	397	14	3	1,671	837	834	50
Los Angeles	17,212	16,525	687	4	57,411	24,463	32,948	57	Sonoma	350	338	12	3	2,111	907	1,204	57
Long Beach	1,414	1,360	54	4	6,116	3,082	3,034	50	Stanislaus	154	150	4	3	792	389	403	51
Pasadena	169	161	8	5	800	295	505	63	Sutter	31	30	1	3	77	26	51	66
Madera	83	81	2	2	176	99	77	44	Tehama	10	8	2	20	37	22	15	41
Marin	291	277	14	5	1,689	658	1,031	61	Trinity	2	2	0	0	13	5	8	62
Mariposa	2	2	0	0	16	8	8	50	Tulare	76	73	3	4	365	157	208	57
Mendocino	25	22	3	12	216	81	135	63	Tuolumne	15	15	0	0	72	31	41	57
Merced	55	53	2	4	225	100	125	56	Ventura	316	312	4	1	1,156	528	628	54
Modoc	1	1	0	0	3	0	3	100	Yolo	62	61	1	2	237	104	133	56
Mono	1	1	0	0	7	4	3	43	Yuba	7	7	0	0	66	25	41	62
Monterey	145	142	3	2	990	449	541	55	Unknown	2	1	1	0	4	2	2	0
Napa	97	93	4	4	259	105	154	59									
Nevada	11	11	0	0	134	56	78	58									
TOTAL									43,501	41,711	1,790	4	160,760	69,389	91,371	57	

AIDS reporting began in March 1983. HIV reporting began in April 2006. Statistics calculated using reports through 06/30/2011.

Counts exclude cases diagnosed, but not yet reported as of June 30, 2011 and may understate the number of diagnoses and deaths in the most recent years.

Table represents cases for which the first report was in California.

Source: California Department of Public Health, Office of AIDS, HIV/AIDS Surveillance Section, data as of June 30, 2011.

For more information, call the HIV/AIDS Surveillance Section at (916) 449-5954.





CALIFORNIA HIV/AIDS SEMI-ANNUAL SUMMARY REPORT

CASES REPORTED AS OF JUNE 30, 2011

TABLE 2.

SELECTED INDICATORS	HIV CASES				AIDS CASES				TOTAL HIV/AIDS CASES			
	LIVING		CUMULATIVE		LIVING		CUMULATIVE		LIVING		CUMULATIVE	
	Number	Percent	Number	Percent	Number	Percent	Number	Percent	Number	Percent	Number	Percent
GENDER												
Male	35,978	86.3	37,464	86.1	60,985	87.9	145,331	90.4	96,963	87.3	182,795	89.5
Female	5,446	13.1	5,736	13.2	7,818	11.3	14,458	9.0	13,264	11.9	20,194	9.9
Transgender	284	0.7	298	0.7	586	0.8	971	0.6	870	0.8	1,269	0.6
Unknown	3	0.0	3	0.0	0	0.0	0	0.0	3	0.0	3	0.0
RACE/ETHNICITY												
White	19,143	45.9	20,094	46.2	31,292	45.1	86,549	53.8	50,435	45.4	106,643	52.2
Black	7,689	18.4	8,110	18.6	12,683	18.3	28,517	17.7	20,372	18.3	36,627	17.9
Hispanic	12,537	30.1	12,877	29.6	22,167	31.9	39,648	24.7	34,704	31.2	52,525	25.7
Asian/Pacific Islander	1,618	3.9	1,657	3.8	2,435	3.5	4,114	2.6	4,053	3.6	5,771	2.8
American Indian/Alaskan Native	196	0.5	201	0.5	294	0.4	659	0.4	490	0.4	860	0.4
Multi-race	397	1.0	428	1.0	467	0.7	1,175	0.7	864	0.8	1,603	0.8
Unknown/Other	131	0.3	134	0.3	51	0.1	98	0.1	182	0.2	232	0.1
EXPOSURE CATEGORY												
MSM/Bisexual Male	28,211	67.6	28,993	66.6	44,342	63.9	106,992	66.6	72,553	65.3	135,985	66.6
Injection Drug Use	2,524	6.1	2,880	6.6	6,299	9.1	16,030	10.0	8,823	7.9	18,910	9.3
MSM/Bisexual Male & IDU	2,549	6.1	2,722	6.3	6,156	8.9	15,426	9.6	8,705	7.8	18,148	8.9
Hemophiliac/Transfusion*	78	0.2	95	0.2	416	0.6	2,214	1.4	494	0.4	2,309	1.1
Heterosexual Contact	3,728	8.9	3,840	8.8	6,578	9.5	10,337	6.4	10,306	9.3	14,177	6.9
Other/Unknown*	4,328	10.4	4,670	10.7	5,274	7.6	9,143	5.7	9,602	8.6	13,813	6.8
Perinatal Exposure	293	0.7	301	0.7	324	0.5	618	0.4	617	0.6	919	0.4
AGE GROUP**												
Under 13 years of age	339	0.8	349	0.8	277	0.4	684	0.4	616	0.6	1,033	0.5
13 to 19 years of age	1,131	2.7	1,141	2.6	520	0.7	754	0.5	1,651	1.5	1,895	0.9
20 to 29 years of age	12,237	29.3	12,470	28.7	11,500	16.6	24,517	15.3	23,737	21.4	36,987	18.1
30 to 39 years of age	14,932	35.8	15,434	35.5	29,046	41.9	67,542	42.0	43,978	39.6	82,976	40.6
40 to 49 years of age	9,372	22.5	9,926	22.8	20,087	28.9	45,807	28.5	29,459	26.5	55,733	27.3
Over 49 years of age	3,700	8.9	4,181	9.6	7,959	11.5	21,456	13.3	11,659	10.5	25,637	12.6
TOTAL	41,711	100.0	43,501	100.0	69,389	100.0	160,760	100.0	111,100	100.0	204,261	100.0

AIDS reporting began in March 1983. HIV reporting began in April 2006. Statistics calculated using reports through 06/30/2011.

Percents may not add to 100% due to rounding. MSM = Men who have sex with men. IDU = Injection drug use

* Includes cases where infection/diagnosis occurred when younger than 13 years of age. ** Age values are base upon age of diagnosis.

Source: California Department of Public Health, Office of AIDS, HIV/AIDS Surveillance Section, data as of June 30, 2011.

For more information, call the HIV/AIDS Surveillance Section at (916) 449-5954.



CUMULATIVE HIV/AIDS CASES IN CALIFORNIA MODE OF EXPOSURE BY RACE/ETHNICITY REPORTED AS OF JUNE 30, 2011

TABLE 3.

MODE OF EXPOSURE	HIV CASES					AIDS CASES					TOTAL HIV/AIDS CASES				
	WHITE	BLACK	HISPANIC	OTHER	TOTAL	WHITE	BLACK	HISPANIC	OTHER	TOTAL	WHITE	BLACK	HISPANIC	OTHER	TOTAL
MSM/Bi	14,938	3,913	8,504	1,638	28,993	65,310	13,105	24,702	3,875	106,992	80,248	17,018	33,206	5,513	135,985
IDU	1,231	891	652	106	2,880	5,806	6,196	3,613	415	16,030	7,037	7,087	4,265	521	18,910
MSM/Bi & IDU	1,595	426	564	137	2,722	9,183	2,890	2,827	526	15,426	10,778	3,316	3,391	663	18,148
Heterosexual Contact	1,042	1,299	1,285	214	3,840	2,817	3,358	3,615	547	10,337	3,859	4,657	4,900	761	14,177
Other	1,288	1,581	1,872	325	5,066	3,433	2,968	4,891	683	11,975	4,721	4,549	6,763	1,008	17,041
TOTAL	20,094	8,110	12,877	2,420	43,501	86,549	28,517	39,648	6,046	160,760	106,643	36,627	52,525	8,466	204,261

AIDS reporting began in March 1983. HIV reporting began in April 2006. Statistics calculated using reports through 06/30/2011.

MSM/Bi = Men who have sex with men/Bisexual males. IDU = Injection drug use.

Other Race/Ethnicity includes Asian/Pacific Islander, American Indian/Alaskan Native, Multi-Race and those with unknown or missing race/ethnicity.

Other Mode of Exposure includes Hemophiliac, Transfusion of blood or blood products/Transplant, Confirmed other risk, No identified risk and Pediatric.

Source: California Department of Public Health, Office of AIDS, HIV/AIDS Surveillance Section, data as of June 30, 2011.

For more information, call the HIV/AIDS Surveillance Section at (916) 449-5954.

HIV CASES IN CALIFORNIA SEMI-ANNUAL REPORT CUMULATIVE AS OF JUNE 30, 2011

Figure 6.

Total Number of Cases = 43,501

City AIDS Number of Cases:

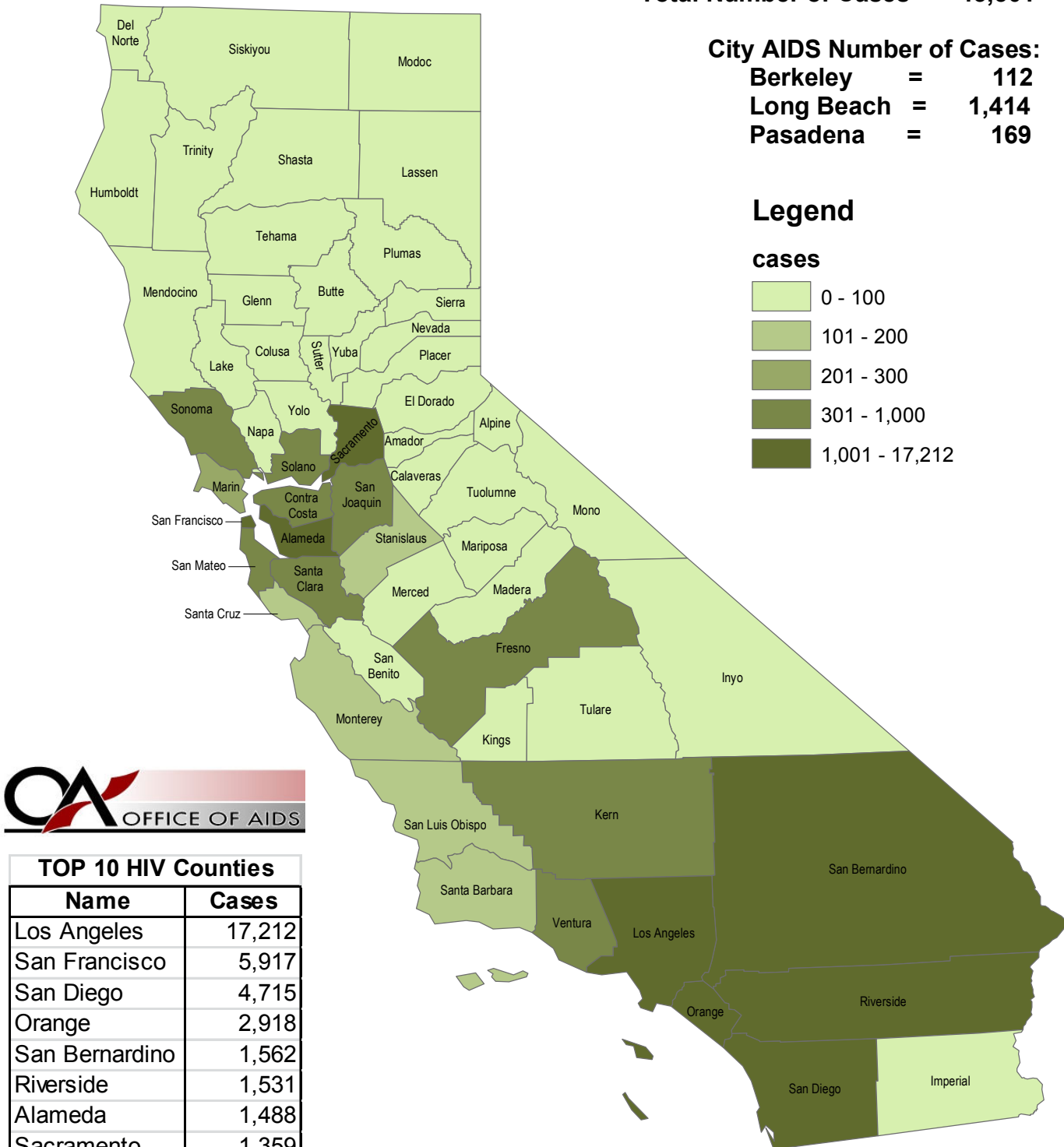
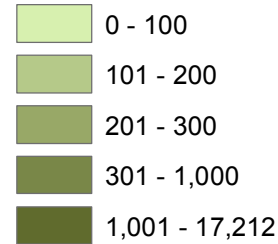
Berkeley = 112

Long Beach = 1,414

Pasadena = 169

Legend

cases



TOP 10 HIV Counties

Name	Cases
Los Angeles	17,212
San Francisco	5,917
San Diego	4,715
Orange	2,918
San Bernardino	1,562
Riverside	1,531
Alameda	1,488
Sacramento	1,359
Santa Clara	865
Contra Costa	708

HIV reporting began in April 2006.

Source: California Department of Public Health, Office of AIDS, HIV/AIDS Surveillance Section, data as of June 30, 2011.

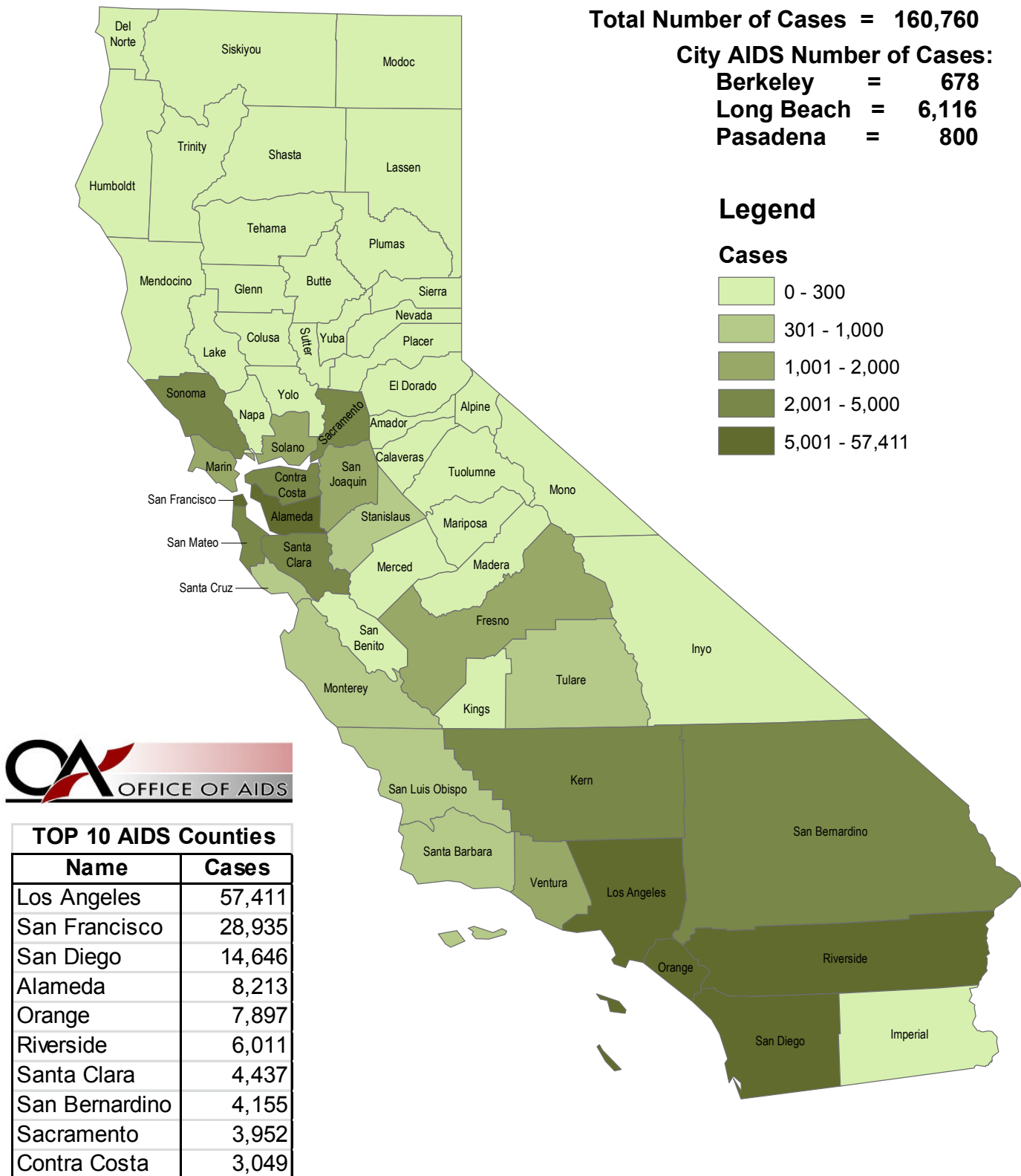
For more information, call the HIV/AIDS Surveillance Section at (916) 449-5954.

AIDS CASES IN CALIFORNIA

SEMI-ANNUAL REPORT

CUMULATIVE AS OF JUNE 30, 2011

Figure 6.



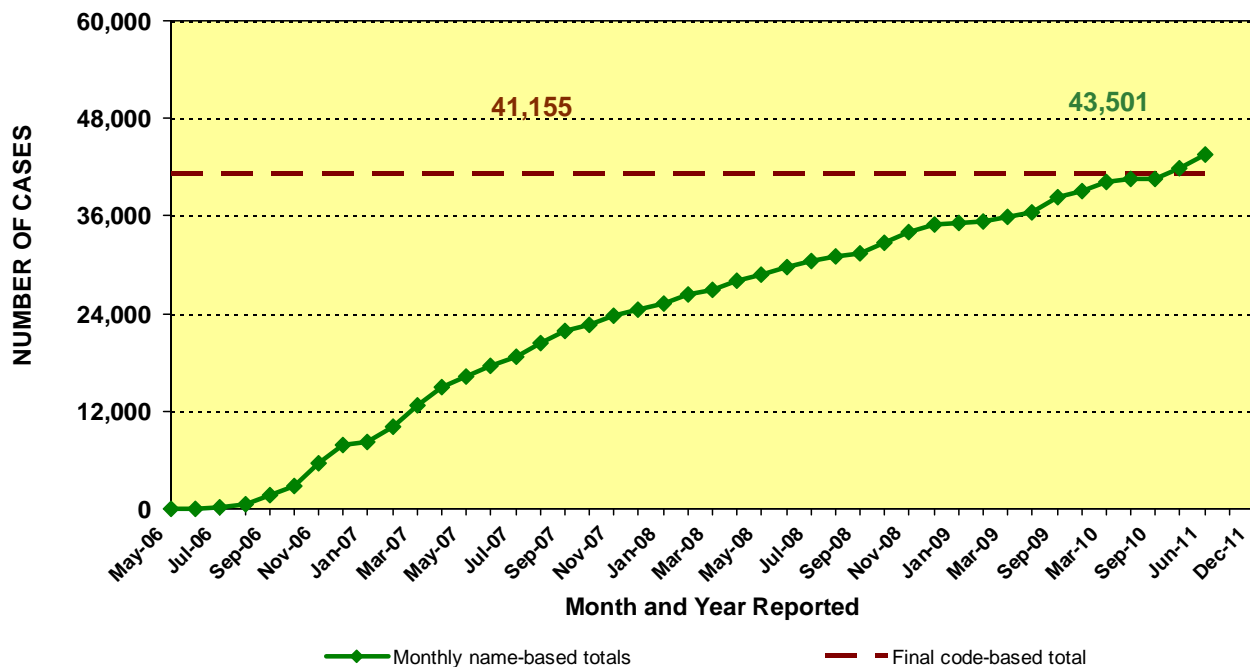
HIV reporting began in April 2006.

Source: California Department of Public Health, Office of AIDS, HIV/AIDS Surveillance Section, data as of June 30, 2011.

For more information, call the HIV/AIDS Surveillance Section at (916) 449-5954.

NAME-BASED HIV CASES COMPARED TO FINAL CODE-BASED TOTAL CUMULATIVE AS OF JUNE 30, 2011

Figure 7.



May-06 data includes cases reported for both April and May 2006.

HIV case totals through March 2006 represent HIV cases reported by non-name code.

Beginning April 2006, HIV case totals are based on HIV cases reported by name.



COUNTY	NAME-BASED	CODE-BASED
Alameda	1,488	1,713
Berkeley	112	123
Alpine	0	1
Amador	12	21
Butte	75	87
Calaveras	6	3
Colusa	1	3
Contra Costa	708	688
Del Norte	10	16
El Dorado	66	49
Fresno	501	692
Glenn	6	4
Humboldt	68	93
Imperial	73	61
Inyo	2	2
Kern	665	534
Kings	81	95
Lake	19	33
Lassen	11	8
Los Angeles	17,212	15,304
Long Beach	1,414	1,397
Pasadena	169	130
Madera	83	106
Marin	291	352
Mariposa	2	5
Mendocino	25	48
Merced	55	48
Modoc	1	0
Mono	1	0
Monterey	145	162
Napa	97	73
Nevada	11	11

COUNTY	NAME-BASED	CODE-BASED
Orange	2,918	2,155
Placer	45	51
Plumas	2	4
Riverside	1,531	1,691
Sacramento	1,359	814
San Benito	11	2
San Bernardino	1,562	1,271
San Diego	4,715	4,944
San Francisco	5,917	6,182
San Joaquin	494	411
San Luis Obispo	150	133
San Mateo	429	392
Santa Barbara	154	143
Santa Clara	865	1,017
Santa Cruz	146	152
Shasta	43	16
Sierra	1	0
Siskiyou	8	6
Solano	411	418
Sonoma	350	415
Stanislaus	154	214
Sutter	31	24
Tehama	10	4
Trinity	2	0
Tulare	76	79
Tuolumne	15	13
Ventura	316	313
Yolo	62	62
Yuba	7	14
Unknown	2	3
TOTAL	43,501	41,155

HIV case totals through March 2006 represent HIV cases reported by non-name code. Beginning April 2006, HIV case totals are based on HIV cases reported by name. Due to reporting system differences, HIV cases reported by non-name code and name cannot be combined for unduplicated case counts.

Source: California Department of Public Health, Office of AIDS, HIV/AIDS Surveillance Section, data as of March 31, 2006 and as of June 30, 2011.

For more information, call the HIV/AIDS Surveillance Section at (916) 449-5866.