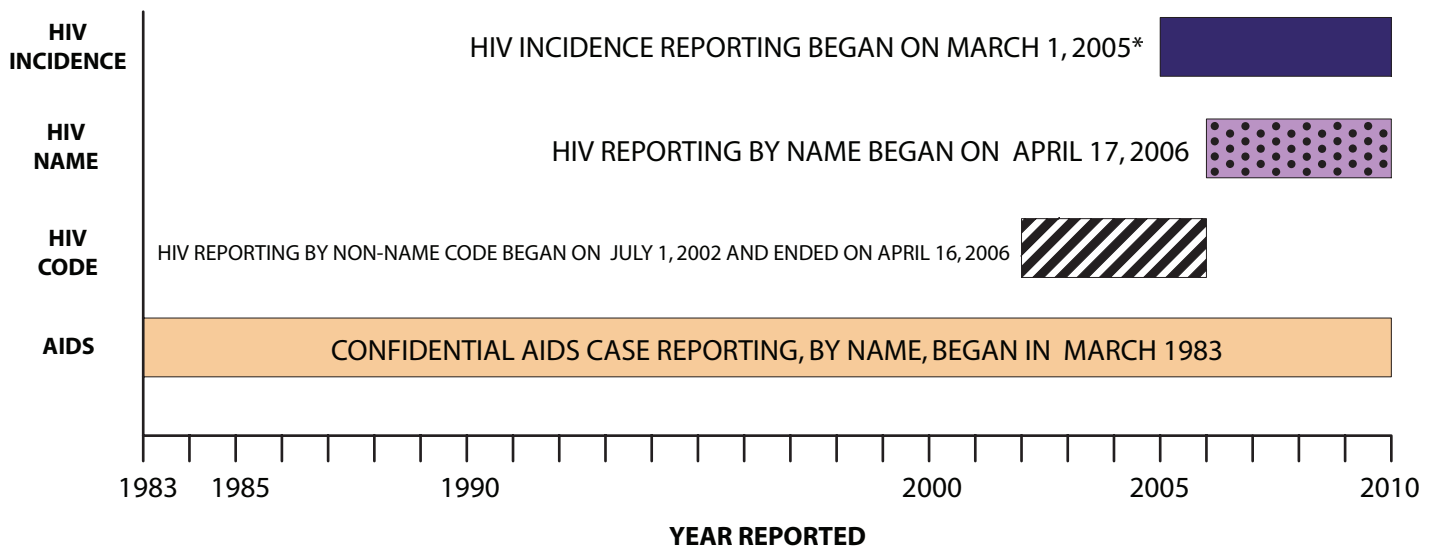


HIV/AIDS SURVEILLANCE IN CALIFORNIA

Over the years, surveillance of HIV/AIDS has evolved to adapt to changes in the HIV/AIDS epidemic and advances in diagnosis and treatment. In the beginning of the epidemic, surveillance systems across the country only reported AIDS cases. California surveillance later expanded due to increased understanding of the etiology and transmission of AIDS to include HIV reporting (see Figure 1 and 2).

- Confidential AIDS case reporting, by name, began in March 1983
- HIV Reporting was first implemented on July 1, 2002, by non-name code
- HIV reporting by name began on April 17, 2006
- HIV Incidence Surveillance reporting began on March 1, 2005

FIGURE 1. TIMELINE OF CALIFORNIA HIV/AIDS SURVEILLANCE SYSTEMS



* Date reflects approval of the California area protocol and the beginning of data collection.

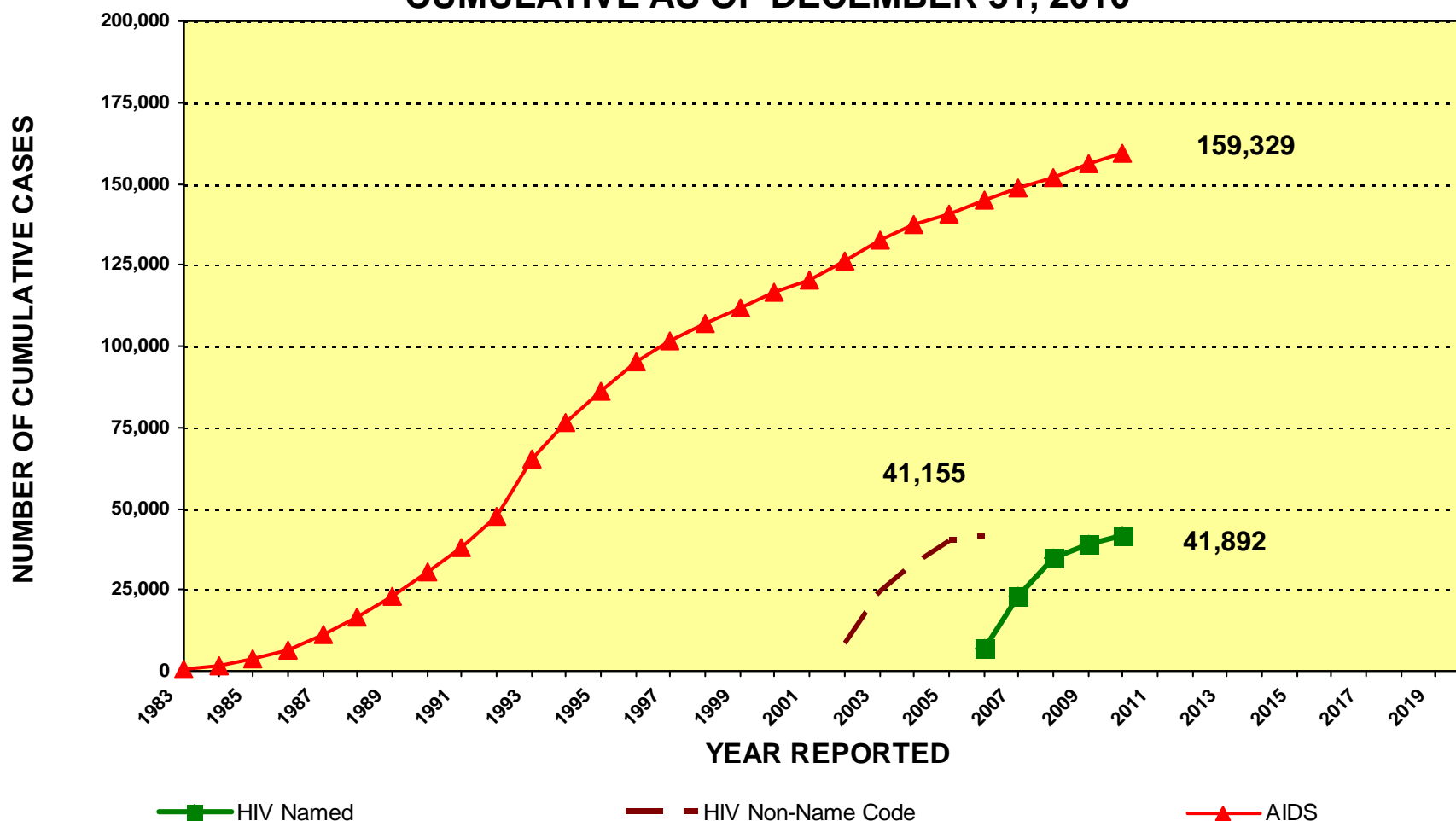
In California and the rest of the United States, HIV infections and AIDS diagnoses are reported through a combination of passive and active surveillance. Passive surveillance is conducted through state required reporting of HIV and AIDS cases by health care providers and reporting of HIV-positive test results from laboratories to Local Health Departments (LHDs). Active surveillance is accomplished through routine visits by LHD staff to hospitals, physician offices, laboratories, counseling and testing (C&T) clinics, and outpatient clinics to ensure completeness, timeliness, and accuracy of reported data. In California and other states, HIV/AIDS surveillance has historically relied heavily upon local health department staff who perform:

- active case surveillance
- on-site chart reviews
- case report completion

To improve timeliness and completeness of reporting and ensure prompt identification and response to emerging problems in the field, California Department of Public Health, Center for Infectious Diseases, Office of AIDS (OA) supports a decentralized reporting system where HIV and AIDS case reports are identified through passive and active surveillance efforts coordinated by California's 61 LHDs. HIV/AIDS surveillance case data, reported to local jurisdictions by health care providers and laboratories, is then sent to OA's HIV/AIDS Surveillance Section. Surveillance Section then submits electronic HIV/AIDS case reports, without personal identifiers, to CDC.

Figure 2.

CALIFORNIA HIV/AIDS SURVEILLANCE CASE ACCUMULATION CUMULATIVE AS OF DECEMBER 31, 2010



AIDS reporting began in March 1983.

HIV case totals through March 2006 represent HIV cases reported by non-name code. Beginning April 2006, the HIV case total is based on HIV cases reported by name. Due to reporting system differences, HIV cases reported by non-name code and name cannot be combined for unduplicated case counts. Statistics reported for the current quarter may vary from previous quarters due to data cleaning efforts that are ongoing at the Office of AIDS, Surveillance Section. Those data cleaning efforts include duplicate resolution of cases which may result in a net decrease for some jurisdictions comparing the current quarter to the preceding quarter.

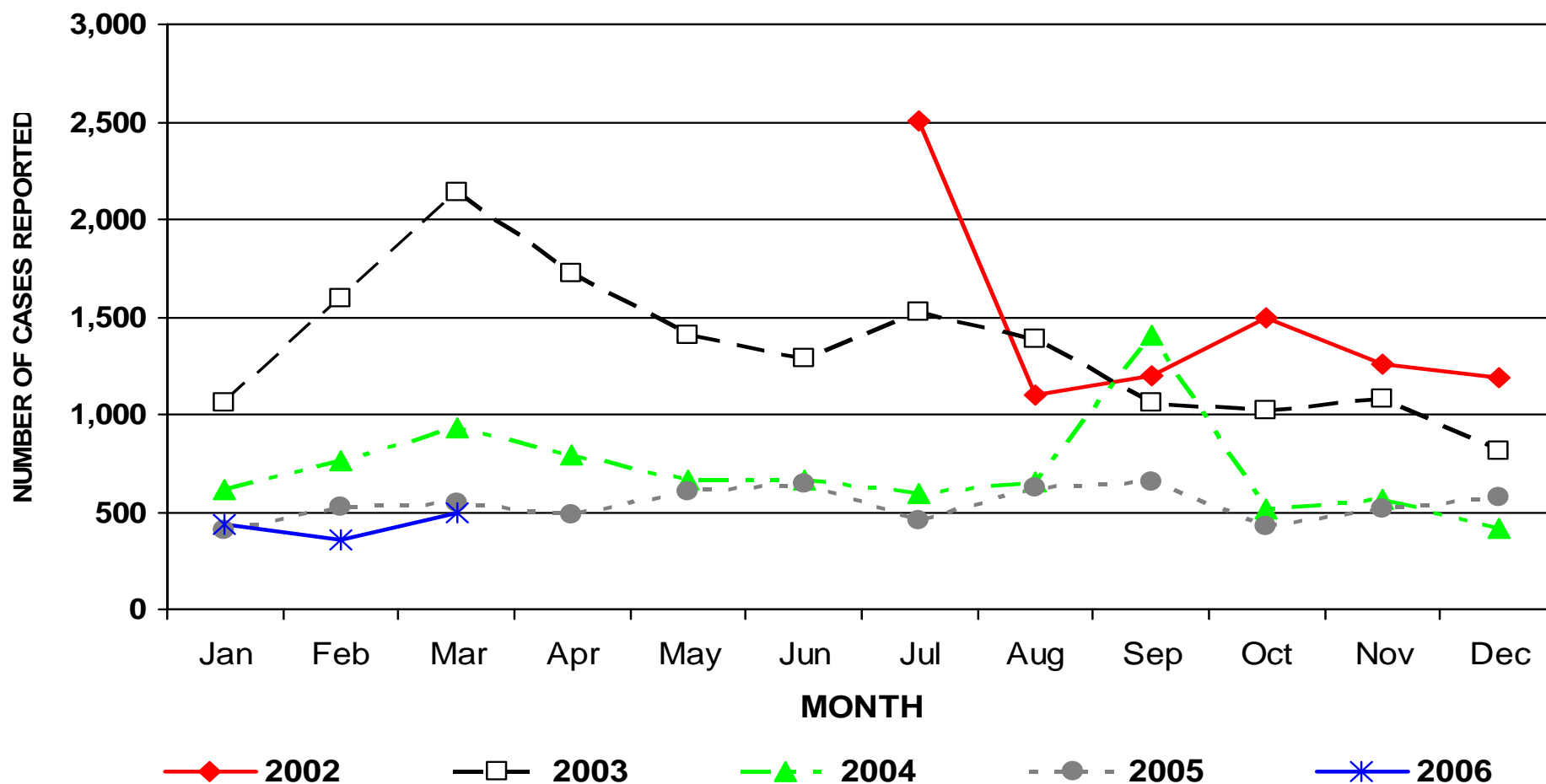
Source: California Department of Public Health, Office of AIDS, HIV/AIDS Surveillance Section, data as of DECEMBER 31, 2010.

For more information, call the HIV/AIDS Surveillance Section at (916) 449-5954.



FIGURE 3.

CALIFORNIA HIV NON-NAME-CODE-BASED CASES BY MONTH AND YEAR REPORTED JULY 1, 2002 THROUGH MARCH 31, 2006



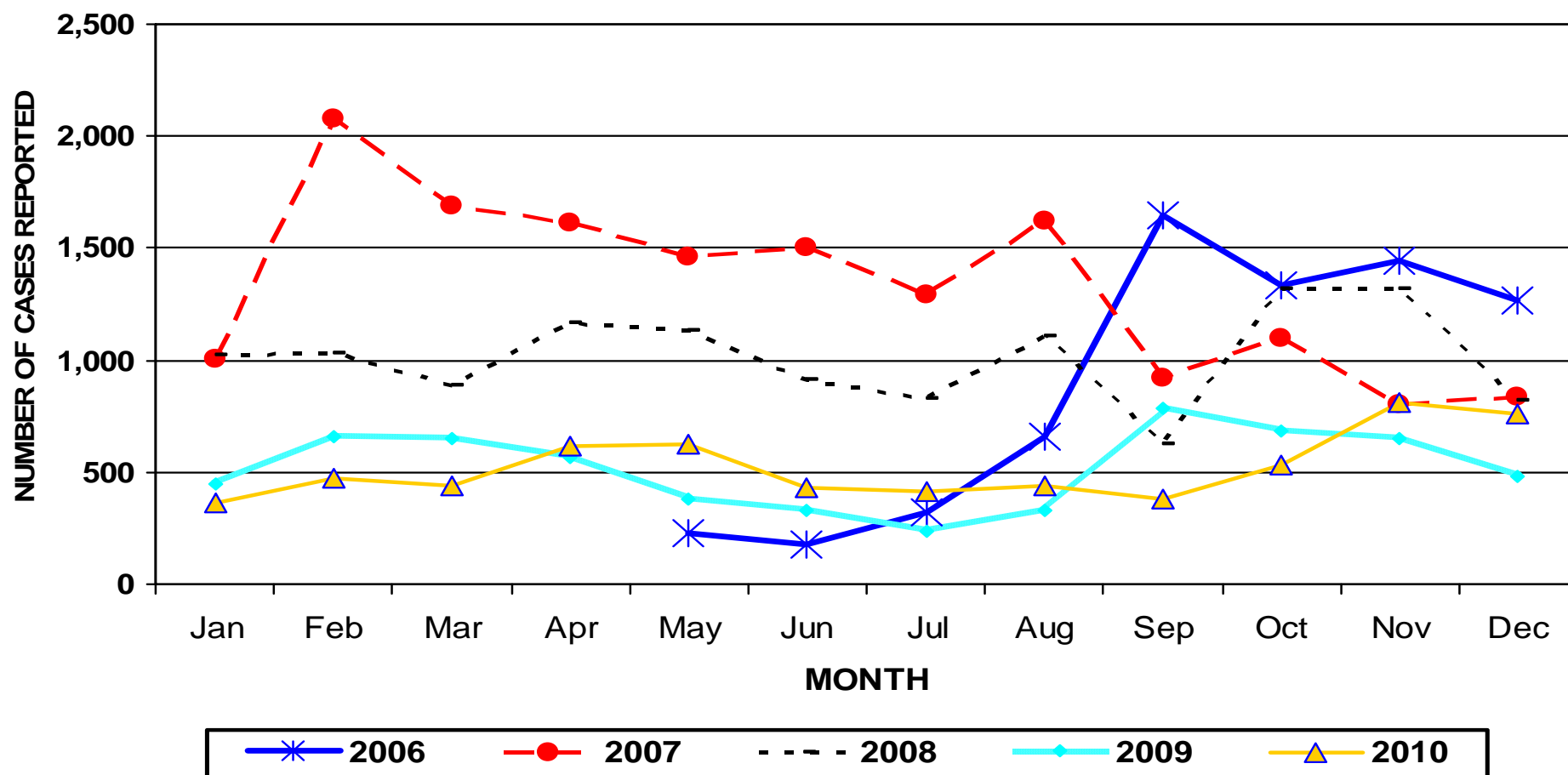
HIV case totals through March 2006 represent HIV cases reported by non-name code. Beginning April 2006, HIV case total are based on HIV cases reported by name. Due to reporting system differences, HIV cases reported by non-name code and name cannot be combined for unduplicated case counts.

Source: California Department of Public Health, Office of AIDS, HIV/AIDS Surveillance Section, data as of March 31, 2006. For more information, call the HIV/AIDS Surveillance Section at (916) 449-5954.



FIGURE 4.

CALIFORNIA HIV NAME-BASED CASES BY MONTH AND YEAR REPORTED APRIL 17, 2006 THROUGH DECEMBER 31, 2010



HIV named-based reporting began in April 2006.

HIV case totals which were reported from July 2002 through March 2006 represent HIV cases reported by non-name code. Due to reporting system differences, HIV cases reported by non-name code and name cannot be combined for unduplicated case counts.

Source: California Department of Public Health, Office of AIDS, HIV/AIDS Surveillance Section, data as of December 31, 2010.

For more information, call the HIV/AIDS Surveillance Section at (916) 449-5954.



CUMULATIVE AS OF DECEMBER 31, 2010

TABLE 1.

COUNTY	HIV				AIDS				COUNTY	HIV				AIDS			
	Total Cases	Living Cases	Deceased		Total Cases	Living Cases	Deceased			Total Cases	Living Cases	Deceased		Total Cases	Living Cases	Deceased	
			Number	%			Number	%				Number	%			Number	%
Alameda	1,474	1,453	21	1	8,128	3,777	4,351	54	Orange	2,879	2,703	176	6	7,782	3,824	3,958	51
Berkeley	110	110	0	0	677	272	405	60	Placer	42	41	1	2	193	100	93	48
Alpine	0	0	0	0	0	0	0	0	Plumas	2	2	0	0	12	5	7	58
Amador	12	12	0	0	51	25	26	51	Riverside	1,513	1,488	25	2	5,947	3,431	2,516	42
Butte	73	66	7	10	277	132	145	52	Sacramento	1,299	1,281	18	1	3,883	1,841	2,042	53
Calaveras	6	6	0	0	21	10	11	52	San Benito	9	8	1	11	48	27	21	44
Colusa	1	1	0	0	14	2	12	86	San Bernardino	1,575	1,482	93	6	4,106	1,998	2,108	51
Contra Costa	651	626	25	4	2,999	1,249	1,750	58	San Diego	4,532	4,406	126	3	14,512	7,230	7,282	50
Del Norte	10	10	0	0	38	25	13	34	San Francisco	5,820	5,555	265	5	28,761	9,473	19,288	67
El Dorado	61	59	2	3	194	75	119	61	San Joaquin	468	465	3	1	1,323	710	613	46
Fresno	418	414	4	1	1,796	906	890	50	San Luis Obispo	148	148	0	0	610	322	288	47
Glenn	6	5	1	17	17	8	9	53	San Mateo	397	391	6	2	2,297	972	1,325	58
Humboldt	71	68	3	4	242	94	148	61	Santa Barbara	138	136	2	1	882	371	511	58
Imperial	71	70	1	1	234	141	93	40	Santa Clara	861	852	9	1	4,356	2,216	2,140	49
Inyo	2	2	0	0	17	8	9	53	Santa Cruz	141	138	3	2	635	283	352	55
Kern	656	645	11	2	1,964	1,291	673	34	Shasta	40	39	1	3	188	83	105	56
Kings	71	70	1	1	234	140	94	40	Sierra	1	1	0	0	4	0	4	100
Lake	18	17	1	6	157	68	89	57	Siskiyou	8	7	1	13	46	20	26	57
Lassen	11	10	1	9	60	35	25	42	Solano	442	431	11	2	1,656	864	792	48
Los Angeles	16,285	15,764	521	3	57,083	24,905	32,178	56	Sonoma	342	331	11	3	2,097	921	1,176	56
Long Beach	1,372	1,332	40	3	6,075	3,131	2,944	48	Stanislaus	149	146	3	2	784	408	376	48
Pasadena	160	157	3	2	796	299	497	62	Sutter	29	29	0	0	77	28	49	64
Madera	78	77	1	1	173	102	71	41	Tehama	9	7	2	22	37	22	15	41
Marin	276	263	13	5	1,684	671	1,013	60	Trinity	2	2	0	0	13	5	8	62
Mariposa	3	3	0	0	15	7	8	53	Tulare	71	68	3	4	362	162	200	55
Mendocino	25	22	3	12	215	84	131	61	Tuolumne	15	15	0	0	71	31	40	56
Merced	53	52	1	2	224	106	118	53	Ventura	321	319	2	1	1,134	529	605	53
Modoc	1	1	0	0	3	0	3	100	Yolo	51	50	1	2	234	105	129	55
Mono	1	1	0	0	7	4	3	43	Yuba	5	5	0	0	65	27	38	58
Monterey	144	142	2	1	979	450	529	54	Unknown	0	0	0	0	0	0	0	0
Napa	94	91	3	3	255	106	149	58									
Nevada	11	11	0	0	133	58	75	56									
TOTAL									41,892	40,507	1,385	3	159,329	70,487	88,842	56	

AIDS reporting began in March 1983. HIV reporting began in April 2006. Statistics calculated using reports through 12/31/2010.

Counts exclude cases diagnosed, but not yet reported as of December 31, 2010 and may understate the number of diagnoses and deaths in the most recent years.

Table represents cases for which the first report was in California.

Source: California Department of Public Health, Office of AIDS, HIV/AIDS Surveillance Section, data as of December 31, 2010.

For more information, call the HIV/AIDS Surveillance Section at (916) 449-5954.





CALIFORNIA HIV/AIDS QUARTERLY SUMMARY REPORT

CASES REPORTED AS OF DECEMBER 31, 2010

TABLE 2.

SELECTED INDICATORS	HIV CASES				AIDS CASES				TOTAL HIV/AIDS CASES			
	LIVING		CUMULATIVE		LIVING		CUMULATIVE		LIVING		CUMULATIVE	
	Number	Percent	Number	Percent	Number	Percent	Number	Percent	Number	Percent	Number	Percent
GENDER												
Male	34,907	86.2	36,059	86.1	61,883	87.8	144,071	90.4	96,790	87.2	180,130	89.5
Female	5,318	13.1	5,542	13.2	8,016	11.4	14,306	9.0	13,334	12.0	19,848	9.9
Transgender	282	0.7	291	0.7	588	0.8	952	0.6	870	0.8	1,243	0.6
RACE/ETHNICITY												
White	18,867	46.6	19,597	46.8	32,034	45.4	86,024	54.0	50,901	45.9	105,621	52.5
Black	7,538	18.6	7,860	18.8	13,142	18.6	28,292	17.8	20,680	18.6	36,152	18.0
Hispanic	11,943	29.5	12,207	29.1	22,120	31.4	39,133	24.6	34,063	30.7	51,340	25.5
Asian/Pacific Islander	1,541	3.8	1,580	3.8	2,420	3.4	4,045	2.5	3,961	3.6	5,625	2.8
American Indian/Alaskan Native	187	0.5	192	0.5	308	0.4	654	0.4	495	0.4	846	0.4
Multi-race	328	0.8	352	0.8	409	0.6	1,083	0.7	737	0.7	1,435	0.7
Unknown/Other	103	0.3	104	0.2	54	0.1	98	0.1	157	0.1	202	0.1
EXPOSURE CATEGORY												
MSM/Bisexual Male	27,315	67.4	27,909	66.6	44,818	63.6	106,140	66.6	72,133	65.0	134,049	66.6
Injection Drug Use	2,583	6.4	2,856	6.8	6,679	9.5	15,946	10.0	9,262	8.3	18,802	9.3
MSM/Bisexual Male & IDU	2,540	6.3	2,665	6.4	6,249	8.9	15,214	9.5	8,789	7.9	17,879	8.9
Hemophiliac/Transfusion*	79	0.2	95	0.2	437	0.6	2,214	1.4	516	0.5	2,309	1.1
Heterosexual Contact	3,646	9.0	3,736	8.9	6,670	9.5	10,205	6.4	10,316	9.3	13,941	6.9
Other/Unknown*	4,056	10.0	4,336	10.4	5,313	7.5	8,998	5.6	9,369	8.4	13,334	6.6
Perinatal Exposure	288	0.7	295	0.7	321	0.5	612	0.4	609	0.5	907	0.5
AGE GROUP**												
Under 13 years of age	333	0.8	342	0.8	279	0.4	683	0.4	612	0.6	1,025	0.5
13 to 19 years of age	1,076	2.7	1,083	2.6	517	0.7	734	0.5	1,593	1.4	1,817	0.9
20 to 29 years of age	11,734	29.0	11,916	28.4	11,513	16.3	24,258	15.2	23,247	20.9	36,174	18.0
30 to 39 years of age	14,617	36.1	15,021	35.9	29,603	42.0	67,170	42.2	44,220	39.8	82,191	40.8
40 to 49 years of age	9,183	22.7	9,599	22.9	20,411	29.0	45,340	28.5	29,594	26.7	54,939	27.3
Over 49 years of age	3,564	8.8	3,931	9.4	8,164	11.6	21,144	13.3	11,728	10.6	25,075	12.5
TOTAL	40,507	100.0	41,892	100.0	70,487	100.0	159,329	100.0	110,994	100.0	201,221	100.0

AIDS reporting began in March 1983. HIV reporting began in April 2006. Statistics calculated using reports through 12/31/2010.

Percents may not add to 100% due to rounding. MSM = Men who have sex with men. IDU = Injection drug use

. * Includes cases where infection/diagnosis occurred when younger than 13 years of age. ** Age values are base upon age of diagnosis.

Source: California Department of Public Health, Office of AIDS, HIV/AIDS Surveillance Section, data as of December 31, 2010.

For more information, call the HIV/AIDS Surveillance Section at (916) 449-5954.



CUMULATIVE HIV/AIDS CASES IN CALIFORNIA MODE OF EXPOSURE BY RACE/ETHNICITY REPORTED AS OF DECEMBER 31, 2010

TABLE 3.

MODE OF EXPOSURE	HIV CASES					AIDS CASES					TOTAL HIV/AIDS CASES				
	WHITE	BLACK	HISPANIC	OTHER	TOTAL	WHITE	BLACK	HISPANIC	OTHER	TOTAL	WHITE	BLACK	HISPANIC	OTHER	TOTAL
MSM/Bi	14,581	3,787	8,028	1,514	27,910	65,004	12,996	24,371	3,773	106,144	79,585	16,783	32,399	5,287	134,054
IDU	1,228	895	633	100	2,856	5,780	6,174	3,594	400	15,948	7,008	7,069	4,227	500	18,804
MSM/Bi & IDU	1,562	432	551	121	2,666	9,081	2,850	2,777	506	15,214	10,643	3,282	3,328	627	17,880
Heterosexual Contact	1,027	1,247	1,253	209	3,736	2,778	3,321	3,567	539	10,205	3,805	4,568	4,820	748	13,941
Other	1,200	1,501	1,742	285	4,728	3,386	2,952	4,824	662	11,824	4,586	4,453	6,566	947	16,552
TOTAL	19,598	7,862	12,207	2,229	41,896	86,029	28,293	39,133	5,880	159,335	105,627	36,155	51,340	8,109	201,231

AIDS reporting began in March 1983. HIV reporting began in April 2006. Statistics calculated using reports through 12/31/2010.

MSM/Bi = Men who have sex with men/Bisexual males. IDU = Injection drug use.

Other Race/Ethnicity includes Asian/Pacific Islander, American Indian/Alaskan Native, Multi-Race and those with unknown or missing race/ethnicity.

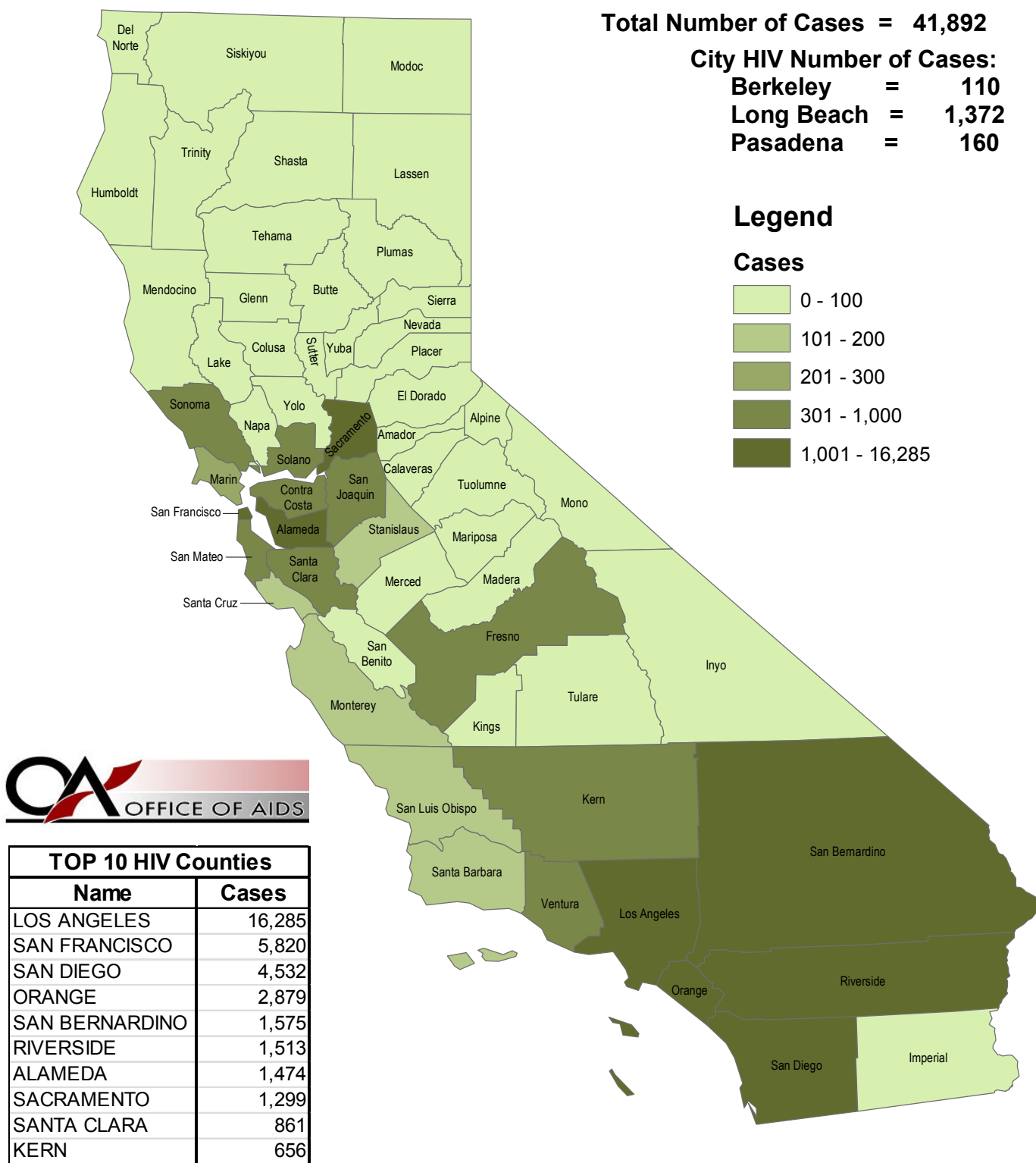
Other Mode of Exposure includes Hemophiliac, Transfusion of blood or blood products/Transplant, Confirmed other risk, No identified risk and Pediatric.

Source: California Department of Public Health, Office of AIDS, HIV/AIDS Surveillance Section, data as of December 31, 2010.

For more information, call the HIV/AIDS Surveillance Section at (916) 449-5954.

HIV CASES IN CALIFORNIA QUARTERLY REPORT CUMULATIVE AS OF DECEMBER 31, 2010

Figure 5.



HIV reporting began in April 2006.

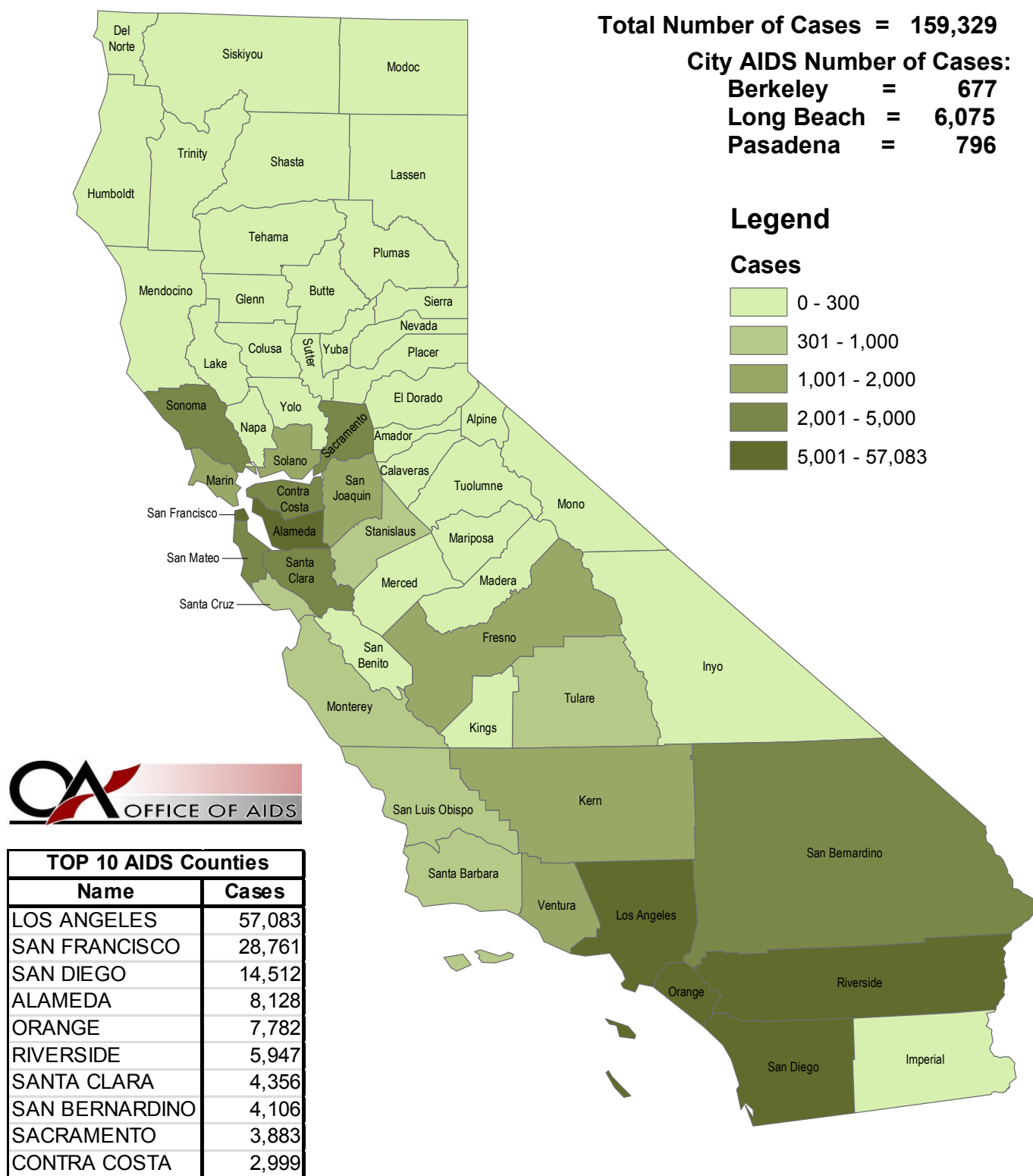
Source: California Department of Public Health, Office of AIDS, HIV/AIDS Surveillance Section, data as of December 31, 2010.
 For more information, call the HIV/AIDS Surveillance Section at (916) 449-5954.

AIDS CASES IN CALIFORNIA

QUARTERLY REPORT

CUMULATIVE AS OF DECEMBER 31, 2010

Figure 6.

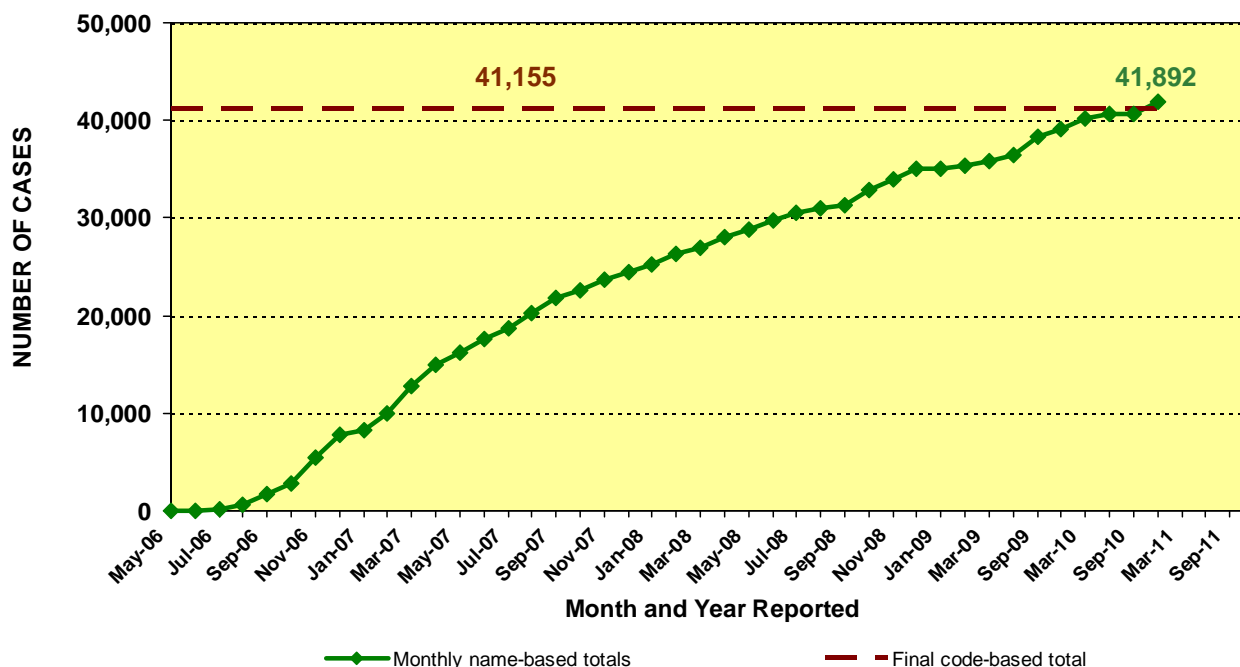


HIV reporting began in April 2006.

Source: California Department of Public Health, Office of AIDS, HIV/AIDS Surveillance Section, data as of December 31, 2010.
 For more information, call the HIV/AIDS Surveillance Section at (916) 449-5954.

NAME-BASED HIV CASES COMPARED TO FINAL CODE-BASED TOTAL CUMULATIVE AS OF DECEMBER 31, 2010

Figure 7.



May-06 data includes cases reported for both April and May 2006.

HIV case totals through March 2006 represent HIV cases reported by non-name code.

Beginning April 2006, HIV case totals are based on HIV cases reported by name.



COUNTY	NAME-BASED	CODE-BASED
Alameda	1,474	1,713
Berkeley	110	123
Alpine	0	1
Amador	12	21
Butte	73	87
Calaveras	6	3
Colusa	1	3
Contra Costa	651	688
Del Norte	10	16
El Dorado	61	49
Fresno	418	692
Glenn	6	4
Humboldt	71	93
Imperial	71	61
Inyo	2	2
Kern	656	534
Kings	71	95
Lake	18	33
Lassen	11	8
Los Angeles	16,285	15,304
Long Beach	1,372	1,397
Pasadena	160	130
Madera	78	106
Marin	276	352
Mariposa	3	5
Mendocino	25	48
Merced	53	48
Modoc	1	0
Mono	1	0
Monterey	144	162
Napa	94	73
Nevada	11	11

COUNTY	NAME-BASED	CODE-BASED
Orange	2,879	2,155
Placer	42	51
Plumas	2	4
Riverside	1,513	1,691
Sacramento	1,299	814
San Benito	9	2
San Bernardino	1,575	1,271
San Diego	4,532	4,944
San Francisco	5,820	6,182
San Joaquin	468	411
San Luis Obispo	148	133
San Mateo	397	392
Santa Barbara	138	143
Santa Clara	861	1,017
Santa Cruz	141	152
Shasta	40	16
Sierra	1	0
Siskiyou	8	6
Solano	442	418
Sonoma	342	415
Stanislaus	149	214
Sutter	29	24
Tehama	9	4
Trinity	2	0
Tulare	71	79
Tuolumne	15	13
Ventura	321	313
Yolo	51	62
Yuba	5	14
Unknown	0	3
TOTAL	41,892	41,155

HIV case totals through March 2006 represent HIV cases reported by non-name code. Beginning April 2006, HIV case totals are based on HIV cases reported by name. Due to reporting system differences, HIV cases reported by non-name code and name cannot be combined for unduplicated case counts.

Source: California Department of Public Health, Office of AIDS, HIV/AIDS Surveillance Section, data as of March 31, 2006 and as of December 31, 2010.

For more information, call the HIV/AIDS Surveillance Section at (916) 449-5866.