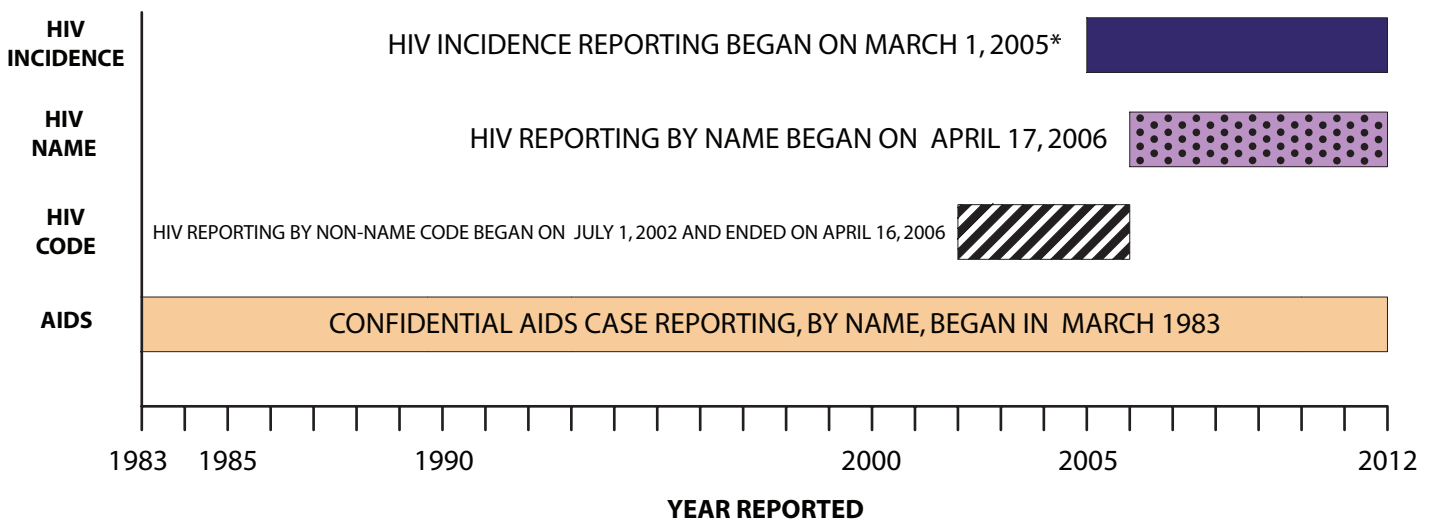


HIV/AIDS SURVEILLANCE IN CALIFORNIA

Over the years, surveillance of HIV/AIDS has evolved to adapt to changes in the HIV/AIDS epidemic and advances in diagnosis and treatment. In the beginning of the epidemic, surveillance systems across the country only reported AIDS cases. California surveillance later expanded due to increased understanding of the etiology and transmission of AIDS to include HIV reporting (see Figure 1 and 2).

- Confidential AIDS case reporting, by name, began in March 1983
- HIV Reporting was first implemented on July 1, 2002, by non-name code
- HIV reporting by name began on April 17, 2006
- HIV Incidence Surveillance reporting began on March 1, 2005

FIGURE 1. TIMELINE OF CALIFORNIA HIV/AIDS SURVEILLANCE SYSTEMS



* Date reflects approval of the California area protocol and the beginning of data collection.

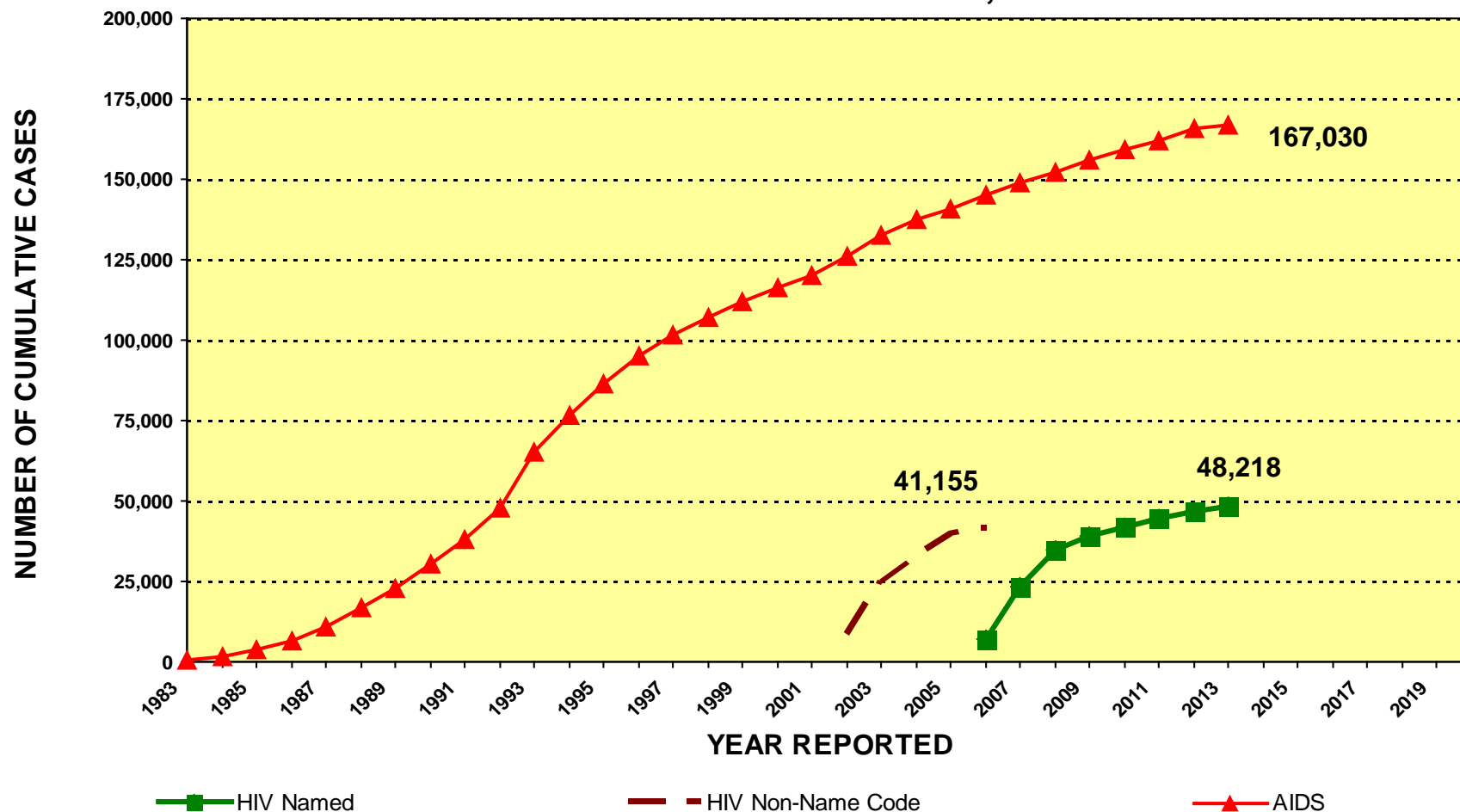
In California and the rest of the United States, HIV infections and AIDS diagnoses are reported through a combination of passive and active surveillance. Passive surveillance is conducted through state required reporting of HIV and AIDS cases by health care providers and reporting of HIV-positive test results from laboratories to Local Health Departments (LHDs). Active surveillance is accomplished through routine visits by LHD staff to hospitals, physician offices, laboratories, counseling and testing (C&T) clinics, and outpatient clinics to ensure completeness, timeliness, and accuracy of reported data. In California and other states, HIV/AIDS surveillance has historically relied heavily upon local health department staff who perform:

- active case surveillance
- on-site chart reviews
- case report completion

To improve timeliness and completeness of reporting and ensure prompt identification and response to emerging problems in the field, California Department of Public Health, Center for Infectious Diseases, Office of AIDS (OA) supports a decentralized reporting system where HIV and AIDS case reports are identified through passive and active surveillance efforts coordinated by California's 61 LHDs. HIV/AIDS surveillance case data, reported to local jurisdictions by health care providers and laboratories, is then sent to OA's HIV/AIDS Surveillance Section. Surveillance Section then submits electronic HIV/AIDS case reports, without personal identifiers, to CDC.

FIGURE 2.

CALIFORNIA HIV/AIDS SURVEILLANCE CASE ACCUMULATION CUMULATIVE AS OF JUNE 30, 2013



AIDS reporting began in March 1983.

HIV case totals through March 2006 represent HIV cases reported by non-name code. Beginning April 2006, the HIV case total is based on HIV cases reported by name. Due to reporting system differences, HIV cases reported by non-name code and name cannot be combined for unduplicated case counts.

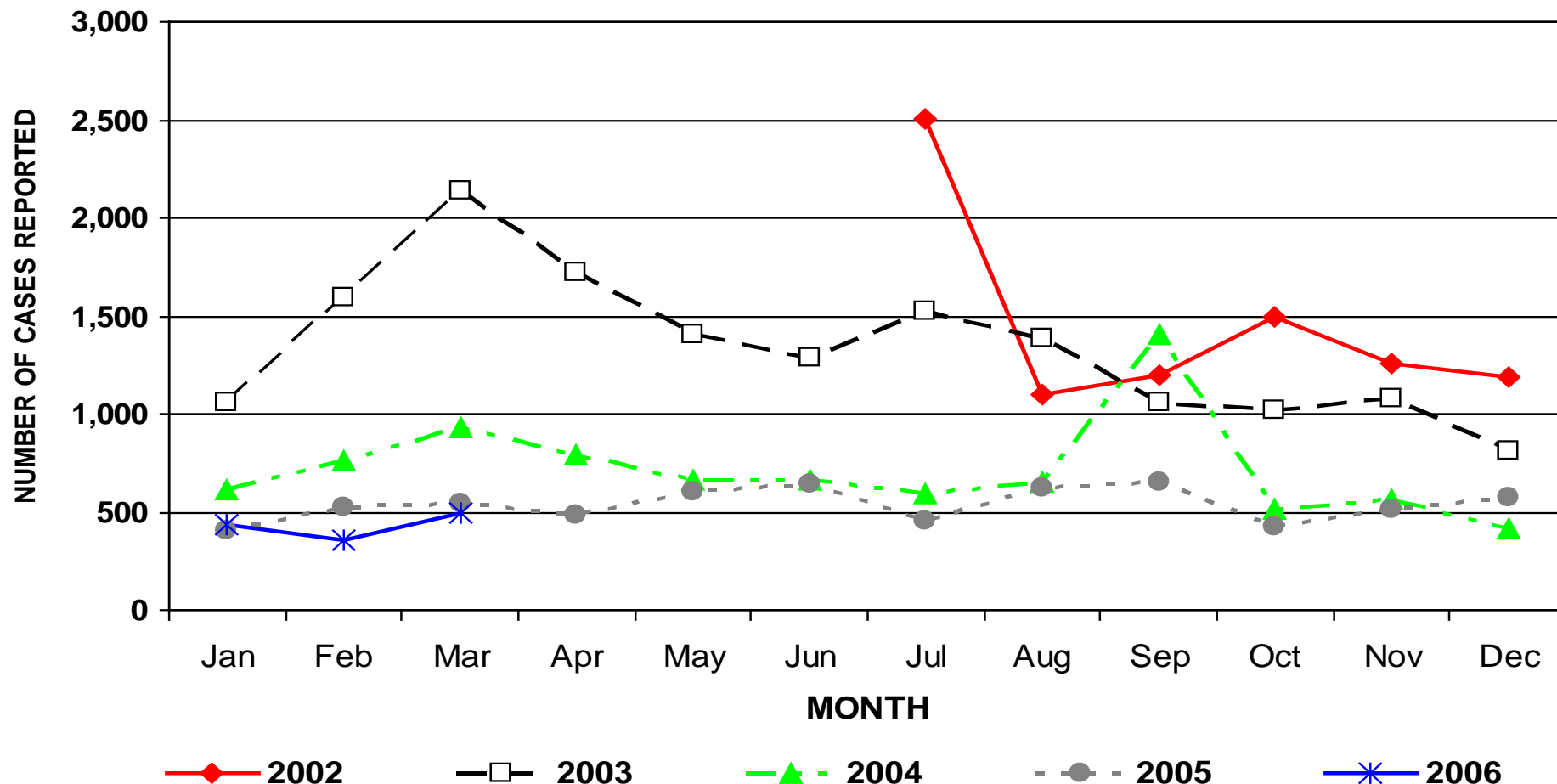
Statistics reported for the current quarter may vary from previous quarters due to data cleaning efforts that are ongoing at the Office of AIDS, Surveillance Section. Those data cleaning efforts include duplicate resolution of cases which may result in a net decrease for some jurisdictions comparing the current quarter to the preceding quarter.

Source: California Department of Public Health, Office of AIDS, HIV/AIDS Surveillance Section, data as of June 30, 2013.

For more information, call the HIV/AIDS Surveillance Section at (916) 449-5954.

FIGURE 3.

CALIFORNIA HIV NON-NAME-CODE-BASED CASES BY MONTH AND YEAR REPORTED JULY 1, 2002 THROUGH MARCH 31, 2006

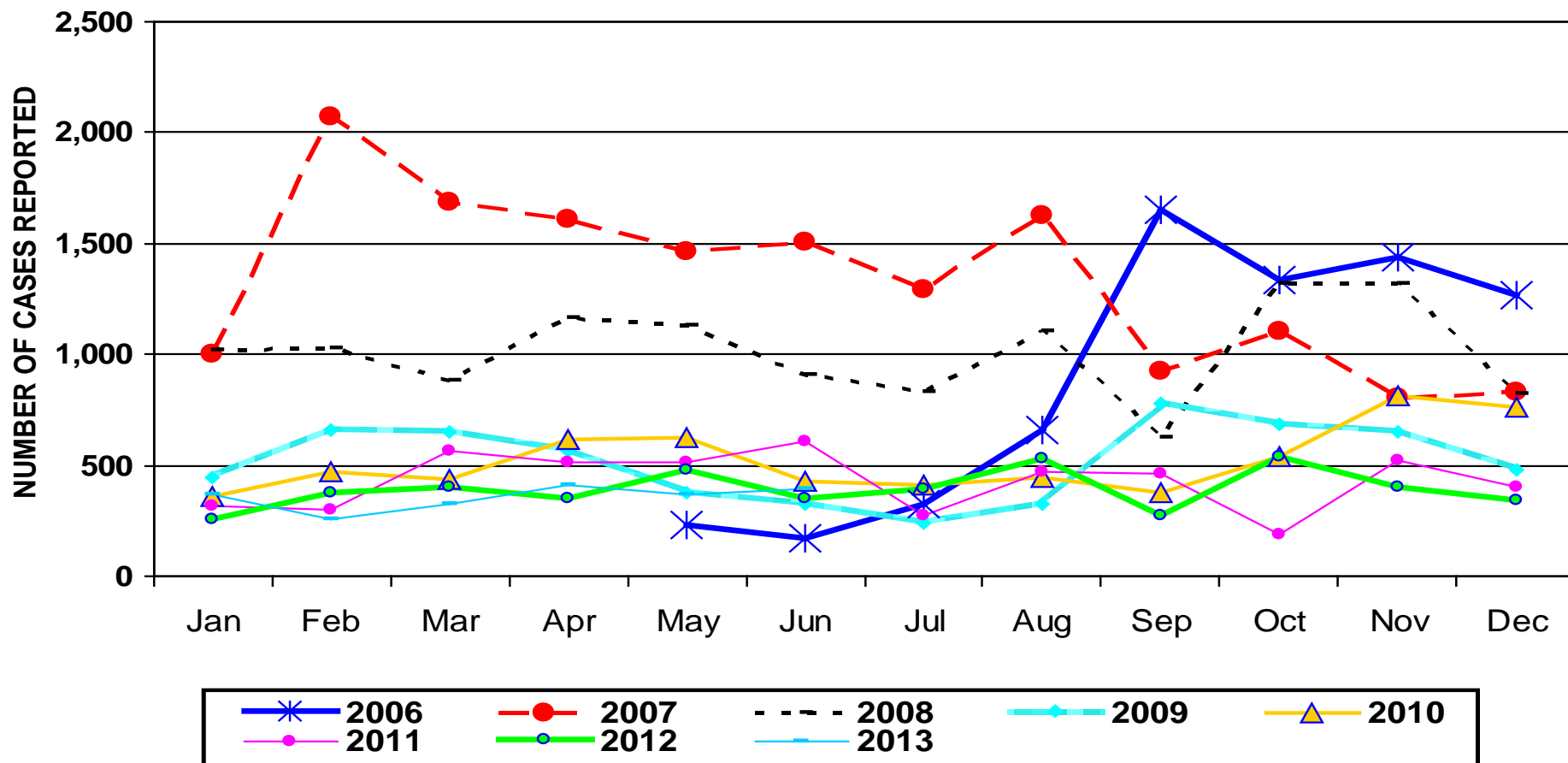


HIV case totals through March 2006 represent HIV cases reported by non-name code. Beginning April 2006, HIV case total are based on HIV cases reported by name. Due to reporting system differences, HIV cases reported by non-name code and name cannot be combined for unduplicated case counts.

Source: California Department of Public Health, Office of AIDS, HIV/AIDS Surveillance Section, data as of March 31, 2006.
For more information, call the HIV/AIDS Surveillance Section at (916) 449-5954.

FIGURE 4.

CALIFORNIA HIV NAMES-BASED CASES BY MONTH AND YEAR REPORTED APRIL 17, 2006 THROUGH JUNE 30, 2013



HIV names-based reporting began in April 2006.

HIV case totals which were reported from July 2002 through March 2006 represent HIV cases reported by non-name code. Due to reporting system differences, HIV cases reported by non-name code and name cannot be combined for unduplicated case counts.

Source: California Department of Public Health, Office of AIDS, HIV/AIDS Surveillance Section, data as of June 30, 2013.

For more information, call the HIV/AIDS Surveillance Section at (916) 449-5954.



SEMI-ANNUAL REPORT OF HIV/AIDS CASES BY COUNTY IN CALIFORNIA

CUMULATIVE AS OF JUNE 30, 2013

TABLE 1.

COUNTY	HIV				AIDS				COUNTY	HIV				AIDS			
	Total Cases	Living Cases	Deceased		Total Cases	Living Cases	Deceased			Total Cases	Living Cases	Deceased		Total Cases	Living Cases	Deceased	
			Number	%			Number	%				Number	%			Number	%
Alameda	1,682	1,629	52	3	8,447	3,854	4,593	54	Orange	3,094	2,882	212	7	8,177	3,998	4,179	51
Berkeley	127	126	1	1	689	268	421	61	Placer	70	68	2	3	205	100	105	51
Alpine	0	0	0	0	0	0	0	0	Plumas	2	2	0	0	12	5	7	58
Amador	13	11	2	15	55	26	29	53	Riverside	1,855	1,783	72	4	6,243	3,394	2,849	46
Butte	88	79	9	10	283	126	157	55	Sacramento	1,565	1,509	56	4	4,137	1,940	2,197	53
Calaveras	8	8	0	0	21	10	11	52	San Benito	14	13	1	7	47	22	25	53
Colusa	3	3	0	0	15	3	12	80	San Bernardino	1,573	1,467	106	7	4,303	2,025	2,278	53
Contra Costa	765	717	48	6	3,142	1,308	1,834	58	San Diego	5,338	5,154	184	3	15,103	7,423	7,680	51
Del Norte	8	8	0	0	40	25	15	38	San Francisco	6,123	5,718	405	7	29,428	9,616	19,812	67
El Dorado	72	70	2	3	206	75	131	64	San Joaquin	551	532	19	3	1,380	707	673	49
Fresno	676	642	34	5	2,035	1,028	1,007	49	San Luis Obispo	161	157	4	2	625	313	312	50
Glenn	6	5	1	17	18	9	9	50	San Mateo	506	490	16	3	2,354	951	1,403	60
Humboldt	64	61	3	5	247	88	159	64	Santa Barbara	182	176	6	3	910	367	543	60
Imperial	81	78	3	4	257	155	102	40	Santa Clara	1,031	1,004	27	3	4,592	2,314	2,278	50
Inyo	2	2	0	0	18	9	9	50	Santa Cruz	160	155	5	3	652	281	371	57
Kern	717	693	24	3	2,043	1,259	784	38	Shasta	50	48	2	4	192	75	117	61
Kings	92	88	4	4	241	137	104	43	Sierra	1	1	0	0	4	0	4	100
Lake	20	19	1	5	159	64	95	60	Siskiyou	9	7	2	22	51	24	27	53
Lassen	13	12	1	8	61	30	31	51	Solano	406	389	17	4	1,692	828	864	51
Los Angeles	19,285	18,432	853	4	60,771	26,885	33,886	56	Sonoma	377	364	13	3	2,141	921	1,220	57
Long Beach	1,573	1,506	67	4	6,258	3,119	3,139	50	Stanislaus	167	162	5	3	810	392	418	52
Pasadena	194	182	12	6	829	302	527	64	Sutter	38	37	1	3	82	30	52	63
Madera	85	82	3	4	190	100	90	47	Tehama	15	13	2	13	38	22	16	42
Marin	292	272	20	7	1,687	635	1,052	62	Trinity	1	1	0	0	14	6	8	57
Mariposa	2	2	0	0	20	12	8	40	Tulare	108	102	6	6	396	181	215	54
Mendocino	27	24	3	11	218	80	138	63	Tuolumne	17	17	0	0	75	31	44	59
Merced	73	70	3	4	238	107	131	55	Ventura	355	347	8	2	1,197	539	658	55
Modoc	1	1	0	0	3	0	3	100	Yolo	82	78	4	5	247	112	135	55
Mono	0	0	0	0	7	4	3	43	Yuba	13	13	0	0	71	28	43	61
Monterey	167	162	5	3	1,018	462	556	55	Unknown	1	1	0	0	0	0	0	0
Napa	95	90	5	5	272	111	161	59									
Nevada	16	16	0	0	140	61	79	56									
TOTAL									48,218	45,966	2,252	5	167,030	73,308	93,722	56	

AIDS reporting began in March 1983. HIV reporting began in April 2006. Statistics calculated using reports through 06/30/2013.

Counts exclude cases diagnosed, but not yet reported as of June 30, 2013, and may understate the number of diagnoses and deaths in the most recent years.

Table represents cases for which the first report was in California.

Source: California Department of Public Health, Office of AIDS, HIV/AIDS Surveillance Section, data as of June 30, 2013.

For more information, call the HIV/AIDS Surveillance Section at (916) 449-5954.





CALIFORNIA HIV/AIDS SEMI-ANNUAL SUMMARY REPORT

CASES REPORTED AS OF JUNE 30, 2013

TABLE 2.

SELECTED INDICATORS	HIV CASES				AIDS CASES				TOTAL HIV/AIDS CASES			
	LIVING		CUMULATIVE		LIVING		CUMULATIVE		LIVING		CUMULATIVE	
	Number	Percent	Number	Percent	Number	Percent	Number	Percent	Number	Percent	Number	Percent
GENDER												
Male	39,836	86.7	41,694	86.5	64,400	87.8	150,783	90.3	104,236	87.4	192,477	89.4
Female	5,796	12.6	6,173	12.8	8,266	11.3	15,201	9.1	14,062	11.8	21,374	9.9
Transgender	334	0.7	351	0.7	642	0.9	1,046	0.6	976	0.8	1,397	0.6
Unknown	0	0.0	0	0.0	0	0.0	0	0.0	0	0.0	0	0.0
RACE/ETHNICITY												
White	20,275	44.1	21,459	44.5	31,898	43.5	88,111	52.8	52,173	43.7	109,570	50.9
Black	8,241	17.9	8,785	18.2	13,200	18.0	29,516	17.7	21,441	18.0	38,301	17.8
Hispanic	14,663	31.9	15,081	31.3	24,396	33.3	42,594	25.5	39,059	32.7	57,675	26.8
American Indian/Alaskan Native	200	0.4	204	0.4	282	0.4	637	0.4	482	0.4	841	0.4
Asian/Pacific Islander	1,938	4.2	1,978	4.1	2,674	3.6	4,369	2.6	4,612	3.9	6,347	2.9
Multi-race	649	1.4	711	1.5	843	1.1	1,761	1.1	1,492	1.3	2,472	1.1
Unknown/Other	0	0.0	0	0.0	15	0.0	42	0.0	15	0.0	42	0.0
EXPOSURE CATEGORY												
MSM/Bisexual Male	31,455	68.4	32,435	67.3	46,992	64.1	110,892	66.4	78,447	65.8	143,327	66.6
Injection Drug Use	2,398	5.2	2,854	5.9	6,214	8.5	16,304	9.8	8,612	7.2	19,158	8.9
MSM/Bisexual Male & IDU	2,690	5.9	2,917	6.0	6,496	8.9	16,104	9.6	9,186	7.7	19,021	8.8
Hemophiliac/Transfusion*	67	0.1	85	0.2	400	0.5	2,204	1.3	467	0.4	2,289	1.1
Heterosexual Contact	3,965	8.6	4,115	8.5	6,874	9.4	10,814	6.5	10,839	9.1	14,929	6.9
Other/Unknown*	5,080	11.1	5,492	11.4	5,981	8.2	10,061	6.0	11,061	9.3	15,553	7.2
Perinatal Exposure	311	0.7	320	0.7	351	0.5	651	0.4	662	0.6	971	0.5
AGE GROUP**												
Under 13 years of age	359	0.8	370	0.8	277	0.4	686	0.4	636	0.5	1,056	0.5
13 to 19 years of age	1,344	2.9	1,363	2.8	596	0.8	840	0.5	1,940	1.6	2,203	1.0
20 to 29 years of age	14,052	30.6	14,355	29.8	12,390	16.9	25,673	15.4	26,442	22.2	40,028	18.6
30 to 39 years of age	15,859	34.5	16,478	34.2	29,897	40.8	69,096	41.4	45,756	38.4	85,574	39.8
40 to 49 years of age	10,182	22.2	10,856	22.5	21,266	29.0	47,741	28.6	31,448	26.4	58,597	27.2
Over 49 years of age	4,170	9.1	4,796	9.9	8,882	12.1	22,994	13.8	13,052	10.9	27,790	12.9
TOTAL	45,966	100.0	48,218	100.0	73,308	100.0	167,030	100.0	119,274	100.0	215,248	100.0

AIDS reporting began in March 1983. HIV reporting began in April 2006. Statistics calculated using reports through 06/30/2013.

Percents may not add to 100% due to rounding. MSM = Men who have sex with men. IDU = Injection drug use

* Includes cases where infection/diagnosis occurred when younger than 13 years of age. ** Age values are based upon age of diagnosis.

Source: California Department of Public Health, Office of AIDS, HIV/AIDS Surveillance Section, data as of June 30, 2013.

For more information, call the HIV/AIDS Surveillance Section at (916) 449-5954.



CUMULATIVE HIV/AIDS CASES IN CALIFORNIA **MODE OF EXPOSURE BY RACE/ETHNICITY** **REPORTED AS OF JUNE 30, 2013**

TABLE 3.

MODE OF EXPOSURE	HIV CASES					AIDS CASES					TOTAL HIV/AIDS CASES				
	WHITE	BLACK	HISPANIC	OTHER	TOTAL	WHITE	BLACK	HISPANIC	OTHER	TOTAL	WHITE	BLACK	HISPANIC	OTHER	TOTAL
MSM/Bi	15,991	4,339	10,087	2,018	32,435	66,379	13,628	26,567	4,318	110,892	82,370	17,967	36,654	6,336	143,327
IDU	1,211	857	658	128	2,854	5,871	6,215	3,732	486	16,304	7,082	7,072	4,390	614	19,158
MSM/Bi & IDU	1,667	442	653	155	2,917	9,435	2,970	3,070	629	16,104	11,102	3,412	3,723	784	19,021
Heterosexual Contact	1,111	1,817	1,422	252	4,115	2,880	3,493	3,829	612	10,814	3,991	5,310	5,251	864	14,929
Other	1,479	1,330	2,261	340	5,897	3,546	3,210	5,396	764	12,916	5,025	4,540	7,657	1,104	18,813
TOTAL	21,459	8,785	15,081	2,893	48,218	88,111	29,516	42,594	6,809	167,030	109,570	38,301	57,675	9,702	215,248

AIDS reporting began in March 1983. HIV reporting began in April 2006. Statistics calculated using reports through 06/30/2013.

MSM/Bi = Men who have sex with men/Bisexual males. IDU = Injection drug use.

Other Race/Ethnicity includes Asian/Pacific Islander, American Indian/Alaskan Native, Multi-Race and those with unknown or missing race/ethnicity.

Other mode of exposure includes hemophiliac, transfusion of blood or blood products/transplant, confirmed other risk, no identified or reported risk and Perinatal.

Source: California Department of Public Health, Office of AIDS, HIV/AIDS Surveillance Section, data as of June 30, 2013.

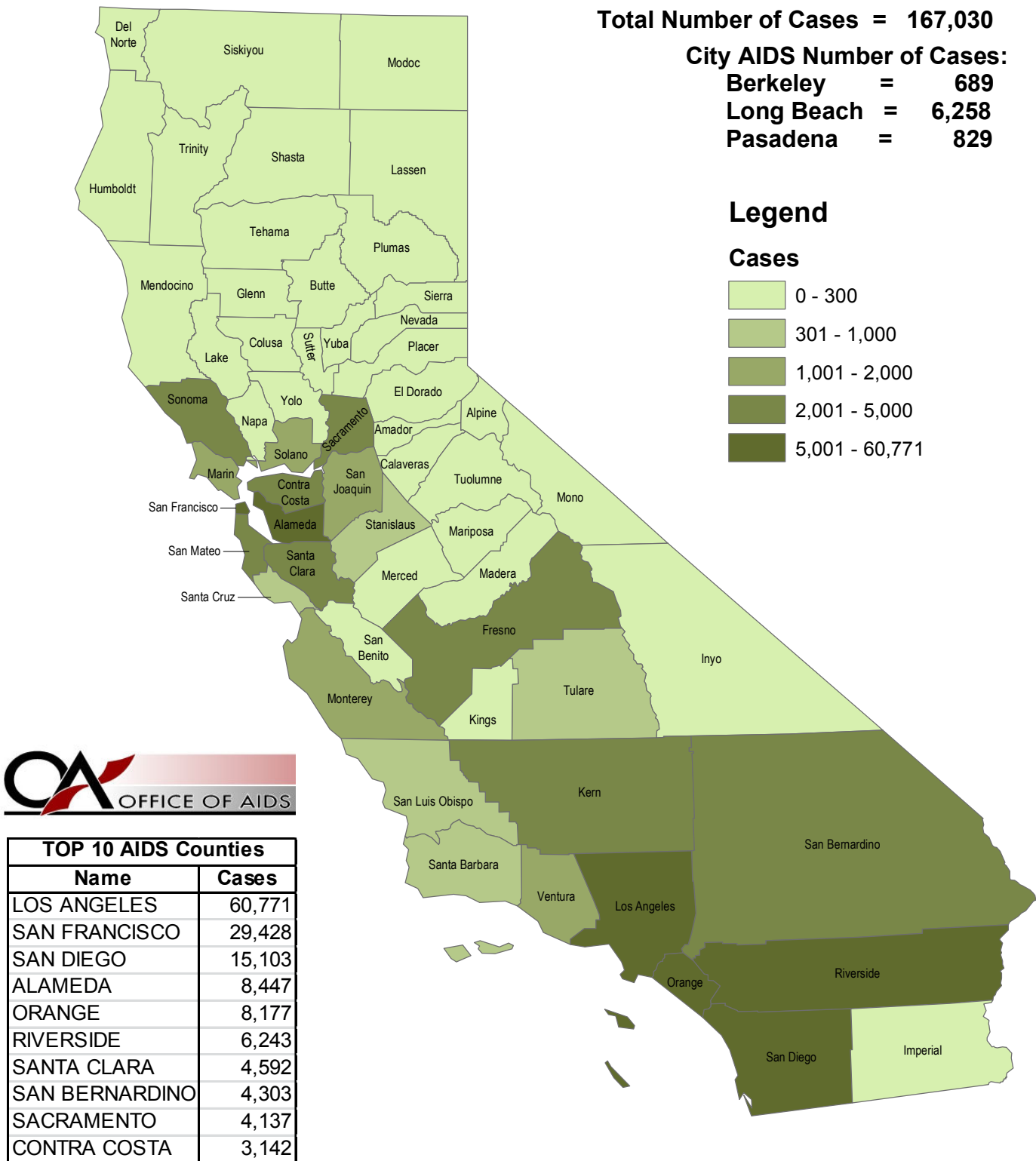
For more information, call the HIV/AIDS Surveillance Section at (916) 449-5954.

AIDS CASES IN CALIFORNIA

QUARTERLY REPORT

CUMULATIVE AS OF JUNE 30, 2013

Figure 6.

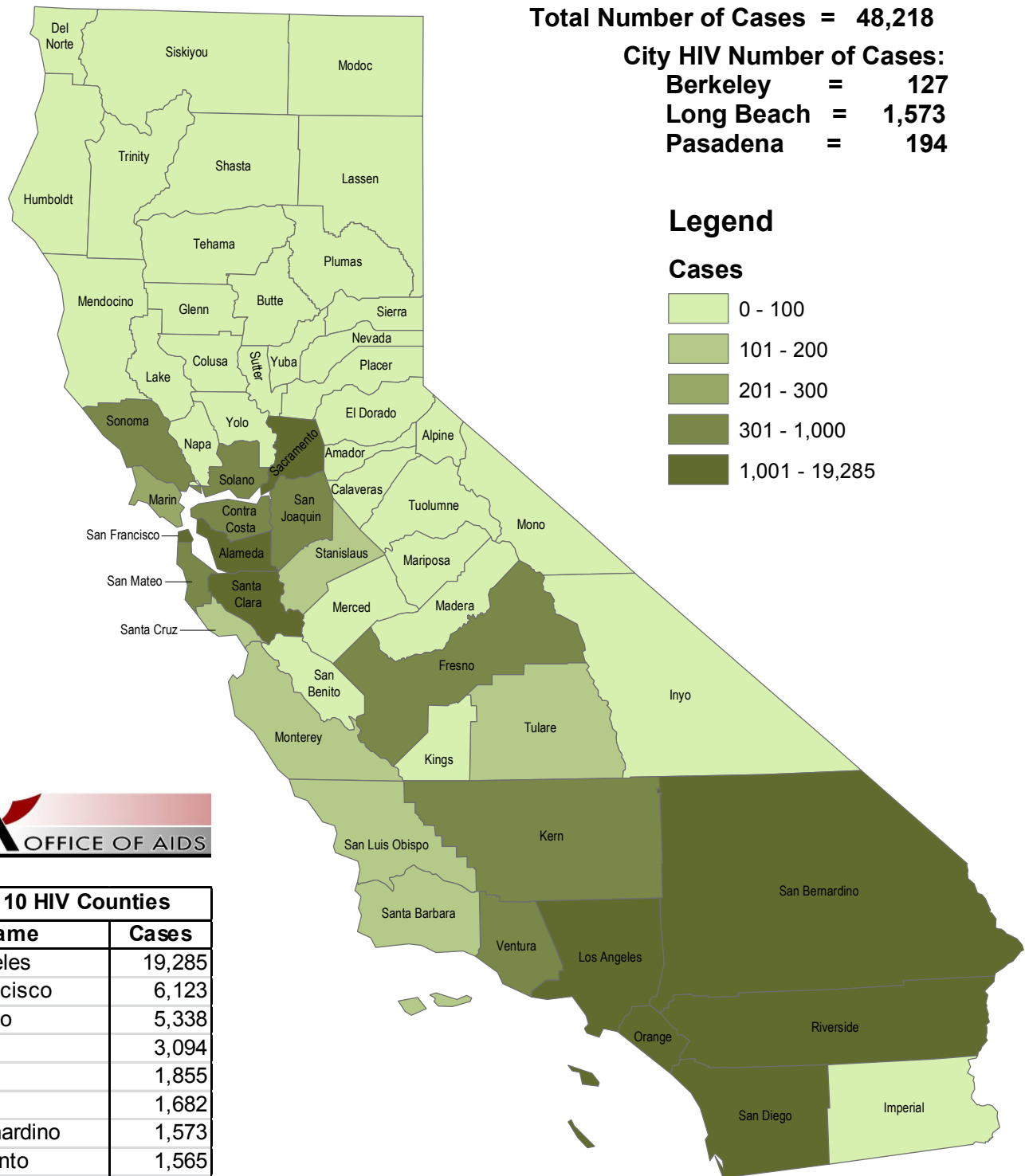


HIV reporting began in April 2006.

Source: California Department of Public Health, Office of AIDS, HIV/AIDS Surveillance Section, data as of June 30, 2013.
 For more information, call the HIV/AIDS Surveillance Section at (916) 449-5954.

HIV CASES IN CALIFORNIA QUARTERLY REPORT CUMULATIVE AS OF JUNE 30, 2013

Figure 6.

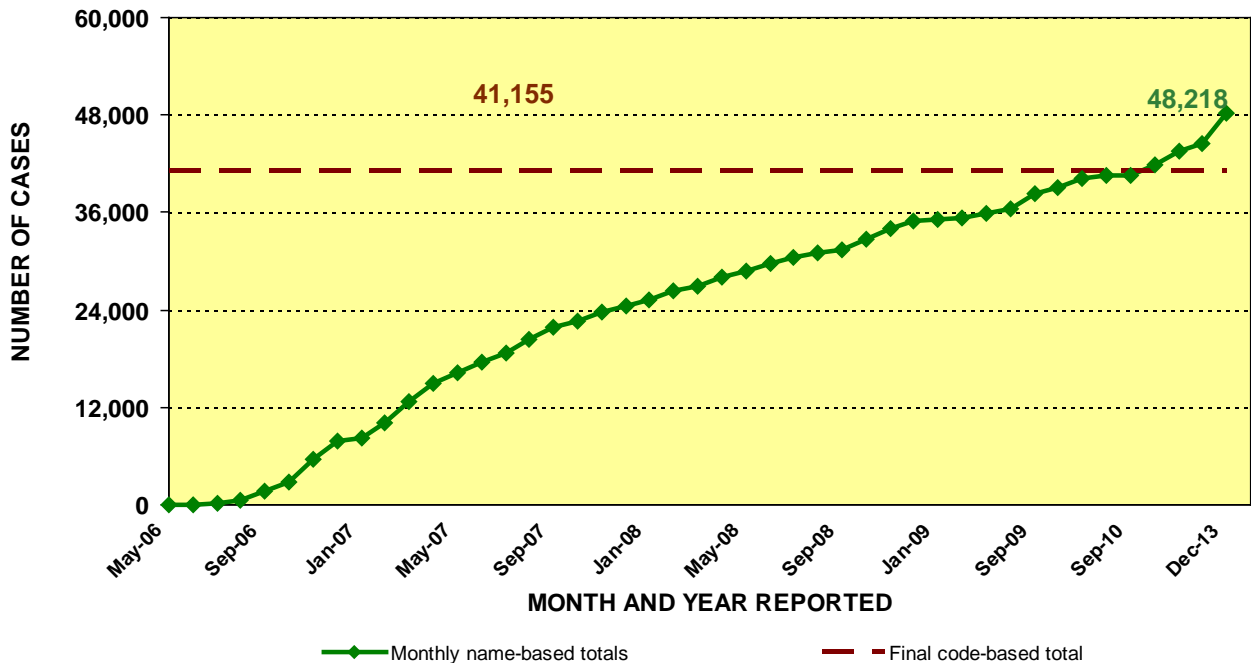


HIV reporting began in April 2006.

Source: California Department of Public Health, Office of AIDS, HIV/AIDS Surveillance Section, data as of June 30, 2013.
 For more information, call the HIV/AIDS Surveillance Section at (916) 449-5954.

NAMES-BASED HIV CASES COMPARED TO FINAL CODE-BASED TOTAL CUMULATIVE AS OF JUNE 30, 2013

FIGURE 7.



May-06 data includes cases reported for both April and May 2006.

HIV case totals through March 2006 represent HIV cases reported by non-name code.

Beginning April 2006, HIV case totals are based on HIV cases reported by name.



COUNTY	NAME-BASED	CODE-BASED
Alameda	1,682	1,713
Berkeley	127	123
Alpine	0	1
Amador	13	21
Butte	88	87
Calaveras	8	3
Colusa	3	3
Contra Costa	765	688
Del Norte	8	16
El Dorado	72	49
Fresno	676	692
Glenn	6	4
Humboldt	64	93
Imperial	81	61
Inyo	2	2
Kern	717	534
Kings	92	95
Lake	20	33
Lassen	13	8
Los Angeles	19,285	15,304
Long Beach	1,573	1,397
Pasadena	194	130
Madera	85	106
Marin	292	352
Mariposa	2	5
Mendocino	27	48
Merced	73	48
Modoc	1	0
Mono	0	0
Monterey	167	162
Napa	95	73
Nevada	16	11

COUNTY	NAME-BASED	CODE-BASED
Orange	3,094	2,155
Placer	70	51
Plumas	2	4
Riverside	1,855	1,691
Sacramento	1,565	814
San Benito	14	2
San Bernardino	1,573	1,271
San Diego	5,338	4,944
San Francisco	6,123	6,182
San Joaquin	551	411
San Luis Obispo	161	133
San Mateo	506	392
Santa Barbara	182	143
Santa Clara	1,031	1,017
Santa Cruz	160	152
Shasta	50	16
Sierra	1	0
Siskiyou	9	6
Solano	406	418
Sonoma	377	415
Stanislaus	167	214
Sutter	38	24
Tehama	15	4
Trinity	1	0
Tulare	108	79
Tuolumne	17	13
Ventura	355	313
Yolo	82	62
Yuba	13	14
Unknown	1	3
TOTAL	48,218	41,155

HIV case totals through March 2006 represent HIV cases reported by non-name code. Beginning April 2006, HIV case totals are based on HIV cases reported by name. Due to reporting system differences, HIV cases reported by non-name code and name cannot be combined for unduplicated case counts.

Source: California Department of Public Health, Office of AIDS, HIV/AIDS Surveillance Section, data as of March 31, 2006 and as of June 30, 2013.

For more information, call the HIV/AIDS Surveillance Section at (916) 449-5866.