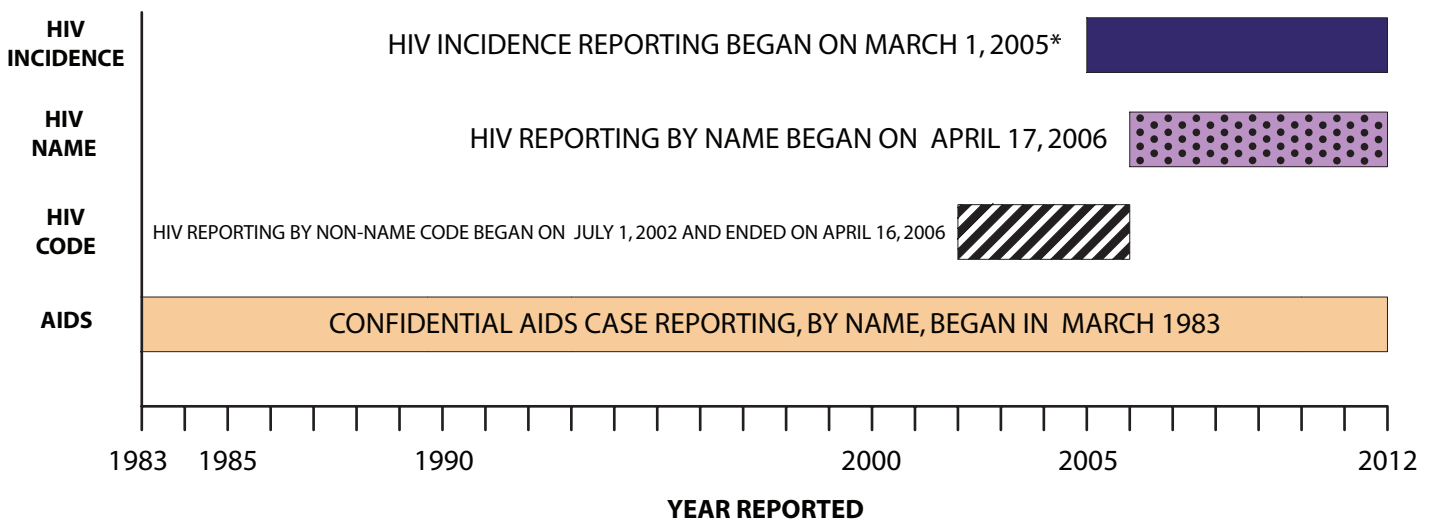


HIV/AIDS SURVEILLANCE IN CALIFORNIA

Over the years, surveillance of HIV/AIDS has evolved to adapt to changes in the HIV/AIDS epidemic and advances in diagnosis and treatment. In the beginning of the epidemic, surveillance systems across the country only reported AIDS cases. California surveillance later expanded due to increased understanding of the etiology and transmission of AIDS to include HIV reporting (see Figure 1 and 2).

- Confidential AIDS case reporting, by name, began in March 1983
- HIV Reporting was first implemented on July 1, 2002, by non-name code
- HIV reporting by name began on April 17, 2006
- HIV Incidence Surveillance reporting began on March 1, 2005

FIGURE 1. TIMELINE OF CALIFORNIA HIV/AIDS SURVEILLANCE SYSTEMS



* Date reflects approval of the California area protocol and the beginning of data collection.

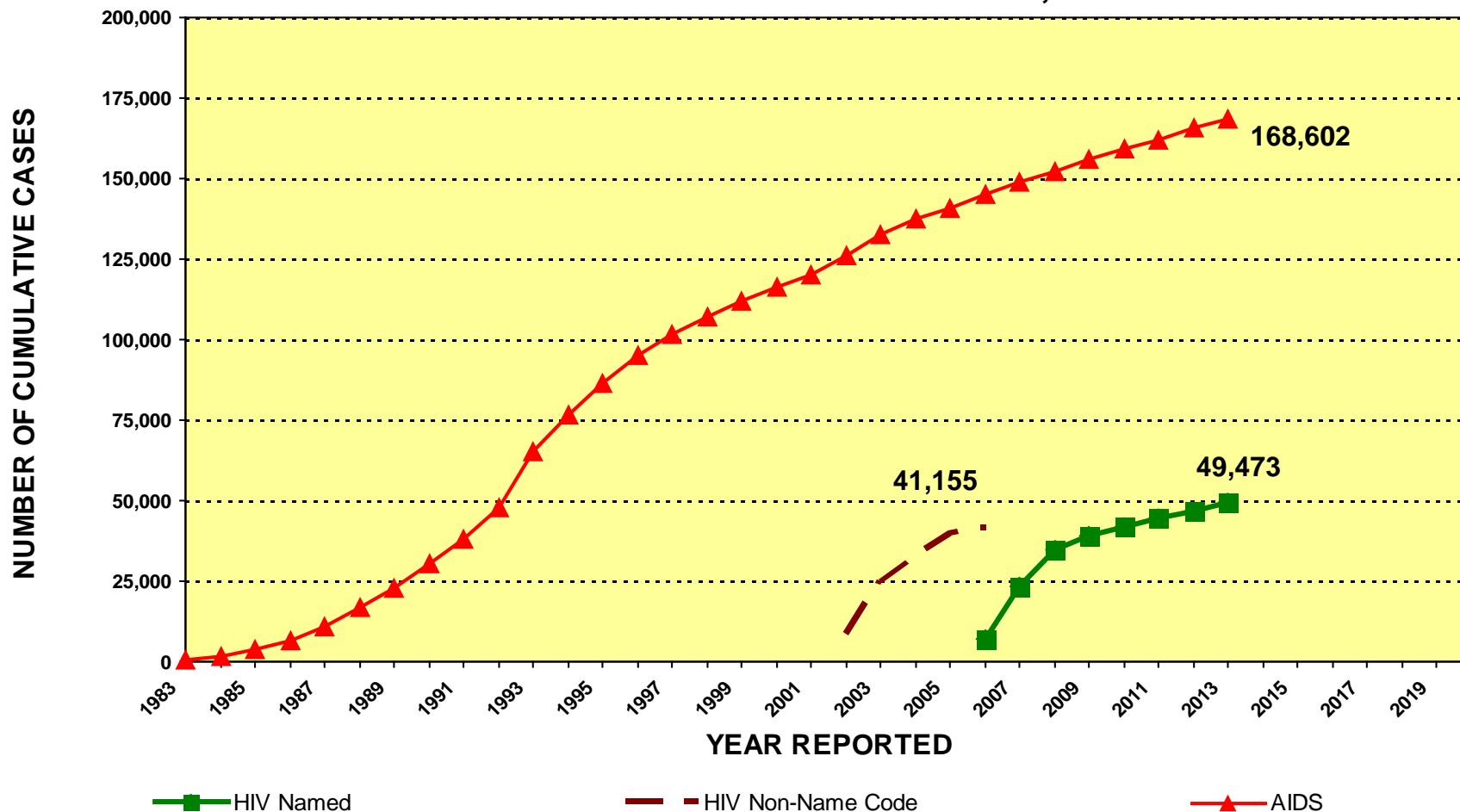
In California and the rest of the United States, HIV infections and AIDS diagnoses are reported through a combination of passive and active surveillance. Passive surveillance is conducted through state required reporting of HIV and AIDS cases by health care providers and reporting of HIV-positive test results from laboratories to Local Health Departments (LHDs). Active surveillance is accomplished through routine visits by LHD staff to hospitals, physician offices, laboratories, counseling and testing (C&T) clinics, and outpatient clinics to ensure completeness, timeliness, and accuracy of reported data. In California and other states, HIV/AIDS surveillance has historically relied heavily upon local health department staff who perform:

- active case surveillance
- on-site chart reviews
- case report completion

To improve timeliness and completeness of reporting and ensure prompt identification and response to emerging problems in the field, California Department of Public Health, Center for Infectious Diseases, Office of AIDS (OA) supports a decentralized reporting system where HIV and AIDS case reports are identified through passive and active surveillance efforts coordinated by California's 61 LHDs. HIV/AIDS surveillance case data, reported to local jurisdictions by health care providers and laboratories, is then sent to OA's HIV/AIDS Surveillance Section. Surveillance Section then submits electronic HIV/AIDS case reports, without personal identifiers, to CDC.

FIGURE 2.

CALIFORNIA HIV/AIDS SURVEILLANCE CASE ACCUMULATION CUMULATIVE AS OF DECEMBER 31, 2013



AIDS reporting began in March 1983.

HIV case totals through March 2006 represent HIV cases reported by non-name code. Beginning April 2006, the HIV case total is based on HIV cases reported by name. Due to reporting system differences, HIV cases reported by non-name code and name cannot be combined for unduplicated case counts.

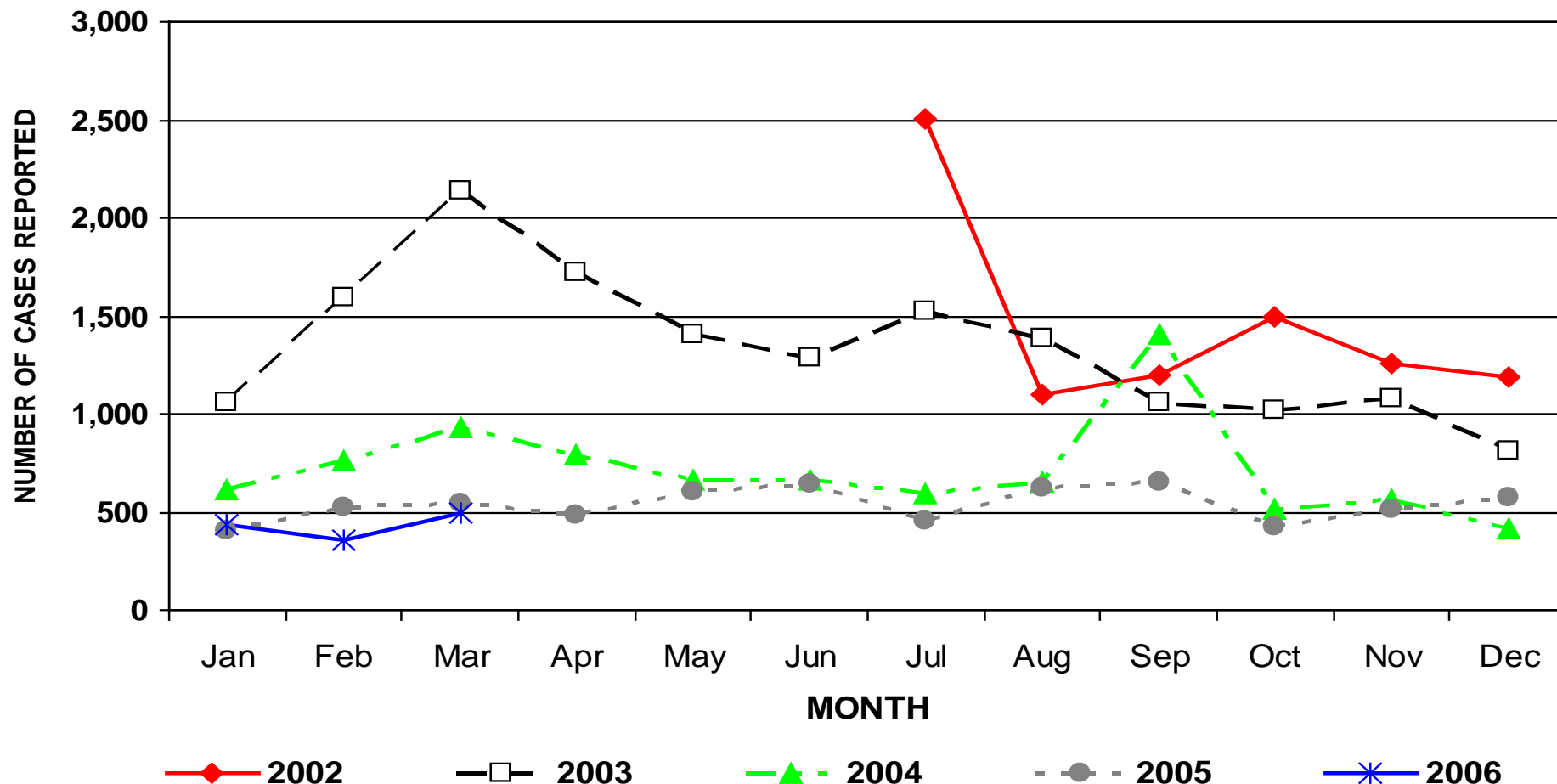
Statistics reported for the current quarter may vary from previous quarters due to data cleaning efforts that are ongoing at the Office of AIDS, Surveillance Section. Those data cleaning efforts include duplicate resolution of cases which may result in a net decrease for some jurisdictions comparing the current quarter to the preceding quarter.

Source: California Department of Public Health, Office of AIDS, HIV/AIDS Surveillance Section, data as of December 31, 2013.

For more information, call the HIV/AIDS Surveillance Section at (916) 449-5954.

FIGURE 3.

CALIFORNIA HIV NON-NAME-CODE-BASED CASES BY MONTH AND YEAR REPORTED JULY 1, 2002 THROUGH MARCH 31, 2006

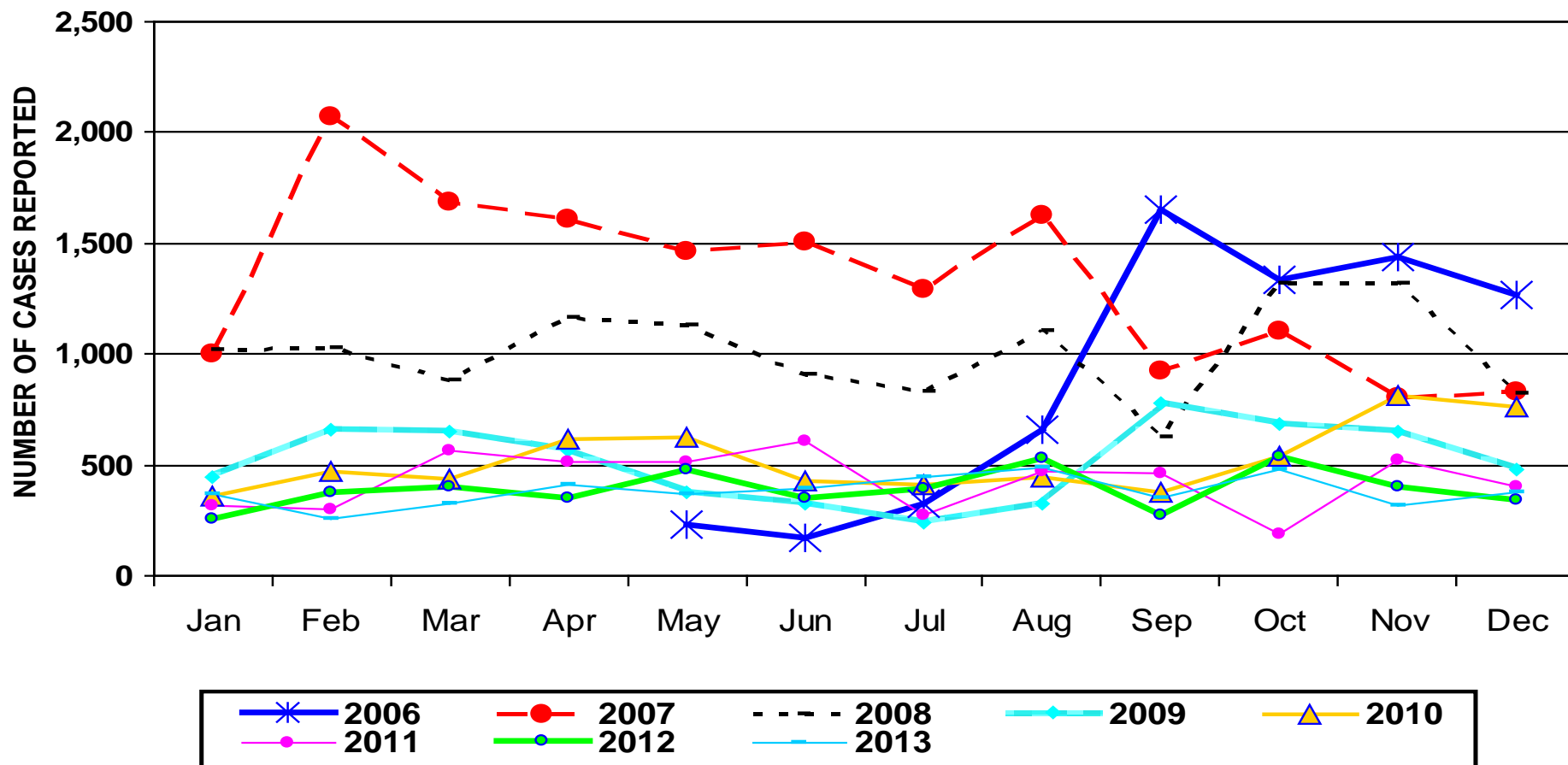


HIV case totals through March 2006 represent HIV cases reported by non-name code. Beginning April 2006, HIV case total are based on HIV cases reported by name. Due to reporting system differences, HIV cases reported by non-name code and name cannot be combined for unduplicated case counts.

Source: California Department of Public Health, Office of AIDS, HIV/AIDS Surveillance Section, data as of March 31, 2006. For more information, call the HIV/AIDS Surveillance Section at (916) 449-5954.

FIGURE 4.

CALIFORNIA HIV NAMES-BASED CASES BY MONTH AND YEAR REPORTED APRIL 17, 2006 THROUGH DECEMBER 31, 2013



HIV names-based reporting began in April 2006.

HIV case totals which were reported from July 2002 through March 2006 represent HIV cases reported by non-name code. Due to reporting system differences, HIV cases reported by non-name code and name cannot be combined for unduplicated case counts.

Source: California Department of Public Health, Office of AIDS, HIV/AIDS Surveillance Section, data as of December 31, 2013.

For more information, call the HIV/AIDS Surveillance Section at (916) 449-5954.



CUMULATIVE AS OF DECEMBER 31, 2013

TABLE 1.

COUNTY	HIV				AIDS				COUNTY	HIV				AIDS			
	Total Cases	Living Cases	Deceased		Total Cases	Living Cases	Deceased			Total Cases	Living Cases	Deceased		Total Cases	Living Cases	Deceased	
			Number	%			Number	%				Number	%			Number	%
Alameda	1,852	1,780	72	4	8,552	3,868	4,684	55	Orange	3,140	2,918	222	7	8,225	3,999	4,226	51
Berkeley	139	136	3	2	700	271	429	61	Placer	72	70	2	3	208	100	108	52
Alpine	0	0	0	0	0	0	0	0	Plumas	2	2	0	0	12	5	7	58
Amador	12	11	1	8	55	26	29	53	Riverside	1,873	1,783	90	5	6,303	3,346	2,957	47
Butte	84	75	9	11	284	122	162	57	Sacramento	1,615	1,537	78	5	4,188	1,930	2,258	54
Calaveras	8	8	0	0	21	10	11	52	San Benito	14	12	2	14	46	21	25	54
Colusa	3	2	1	33	15	3	12	80	San Bernardino	1,620	1,498	122	8	4,359	2,029	2,330	53
Contra Costa	792	736	56	7	3,169	1,309	1,860	59	San Diego	5,485	5,281	204	4	15,237	7,458	7,779	51
Del Norte	8	7	1	13	40	25	15	38	San Francisco	6,253	5,813	440	7	29,524	9,623	19,901	67
El Dorado	73	71	2	3	205	74	131	64	San Joaquin	569	541	28	5	1,406	702	704	50
Fresno	687	646	41	6	2,059	1,028	1,031	50	San Luis Obispo	169	160	9	5	631	310	321	51
Glenn	6	5	1	17	18	9	9	50	San Mateo	522	504	18	3	2,379	951	1,428	60
Humboldt	63	59	4	6	252	89	163	65	Santa Barbara	186	179	7	4	914	370	544	60
Imperial	87	84	3	3	266	160	106	40	Santa Clara	1,084	1,046	38	4	4,618	2,305	2,313	50
Inyo	3	3	0	0	18	9	9	50	Santa Cruz	163	157	6	4	657	270	387	59
Kern	717	683	34	5	2,055	1,239	816	40	Shasta	51	48	3	6	195	76	119	61
Kings	93	88	5	5	244	136	108	44	Sierra	1	1	0	0	4	0	4	100
Lake	21	20	1	5	160	63	97	61	Siskiyou	8	6	2	25	53	26	27	51
Lassen	13	12	1	8	61	29	32	52	Solano	416	397	19	5	1,698	815	883	52
Los Angeles	19,707	18,758	949	5	61,539	27,217	34,322	56	Sonoma	390	377	13	3	2,144	905	1,239	58
Long Beach	1,592	1,522	70	4	6,284	3,103	3,181	51	Stanislaus	179	172	7	4	821	389	432	53
Pasadena	205	192	13	6	835	299	536	64	Sutter	39	38	1	3	82	30	52	63
Madera	82	77	5	6	192	100	92	48	Tehama	15	13	2	13	38	22	16	42
Marin	294	271	23	8	1,694	630	1,064	63	Trinity	1	1	0	0	14	6	8	57
Mariposa	2	2	0	0	20	11	9	45	Tulare	114	106	8	7	403	180	223	55
Mendocino	27	24	3	11	219	80	139	63	Tuolumne	16	15	1	6	75	29	46	61
Merced	79	76	3	4	238	103	135	57	Ventura	357	348	9	3	1,210	548	662	55
Modoc	1	1	0	0	3	0	3	100	Yolo	84	80	4	5	250	113	137	55
Mono	0	0	0	0	7	4	3	43	Yuba	15	13	2	13	72	28	44	61
Monterey	191	185	6	3	1,035	470	565	55	Unknown	0	0	0	0	1	1	0	0
Napa	97	92	5	5	274	110	164	60									
Nevada	18	18	0	0	140	59	81	58									
									TOTAL	49,473	46,910	2,563	5	168,602	73,570	95,032	56

AIDS reporting began in March 1983. HIV reporting began in April 2006. Statistics calculated using reports through 12/31/2013.

Counts exclude cases diagnosed, but not yet reported as of December 31, 2013, and may understate the number of diagnoses and deaths in the most recent years.

Table represents cases for which the first report was in California.

Source: California Department of Public Health, Office of AIDS, HIV/AIDS Surveillance Section, data as of December 31, 2013.

For more information, call the HIV/AIDS Surveillance Section at (916) 449-5954.





CALIFORNIA HIV/AIDS SEMI-ANNUAL SUMMARY REPORT

CASES REPORTED AS OF DECEMBER 31, 2013

TABLE 2.

SELECTED INDICATORS	HIV CASES				AIDS CASES				TOTAL HIV/AIDS CASES			
	LIVING		CUMULATIVE		LIVING		CUMULATIVE		LIVING		CUMULATIVE	
	Number	Percent	Number	Percent	Number	Percent	Number	Percent	Number	Percent	Number	Percent
GENDER												
Male	40,674	86.7	42,793	86.5	64,670	87.9	152,167	90.3	105,344	87.4	194,960	89.4
Female	5,882	12.5	6,307	12.7	8,249	11.2	15,372	9.1	14,131	11.7	21,679	9.9
Transgender	354	0.8	373	0.8	651	0.9	1,063	0.6	1,005	0.8	1,436	0.7
Unknown	0	0.0	0	0.0	0	0.0	0	0.0	0	0.0	0	0.0
RACE/ETHNICITY												
White	20,479	43.7	21,806	44.1	31,733	43.1	88,522	52.5	52,212	43.3	110,328	50.6
Black	8,326	17.7	8,945	18.1	13,166	17.9	29,768	17.7	21,492	17.8	38,713	17.8
Hispanic	15,106	32.2	15,596	31.5	24,753	33.6	43,298	25.7	39,859	33.1	58,894	27.0
American Indian/Alaskan Native	202	0.4	207	0.4	273	0.4	632	0.4	475	0.4	839	0.4
Asian/Pacific Islander	1,998	4.3	2,040	4.1	2,718	3.7	4,426	2.6	4,716	3.9	6,466	3.0
Multi-race	702	1.5	781	1.6	896	1.2	1,886	1.1	1,598	1.3	2,667	1.2
Unknown/Other	97	0.2	98	0.2	31	0.0	70	0.0	128	0.1	168	0.1
EXPOSURE CATEGORY												
MSM/Bisexual Male	32,233	68.7	33,348	67.4	47,290	64.3	111,907	66.4	79,523	66.0	145,255	66.6
Injection Drug Use	2,377	5.1	2,899	5.9	6,086	8.3	16,377	9.7	8,463	7.0	19,276	8.8
MSM/Bisexual Male & IDU	2,699	5.8	2,959	6.0	6,472	8.8	16,220	9.6	9,171	7.6	19,179	8.8
Hemophiliac/Transfusion*	65	0.1	83	0.2	392	0.5	2,208	1.3	457	0.4	2,291	1.1
Heterosexual Contact	4,011	8.6	4,188	8.5	6,898	9.4	10,952	6.5	10,909	9.1	15,140	6.9
Other/Unknown*	5,210	11.1	5,671	11.5	6,077	8.3	10,276	6.1	11,287	9.4	15,947	7.3
Perinatal Exposure	315	0.7	325	0.7	355	0.5	662	0.4	670	0.6	987	0.5
AGE GROUP**												
Under 13 years of age	372	0.8	385	0.8	275	0.4	689	0.4	647	0.5	1,074	0.5
13 to 19 years of age	1,405	3.0	1,427	2.9	610	0.8	859	0.5	2,015	1.7	2,286	1.0
20 to 29 years of age	14,476	30.9	14,820	30.0	12,545	17.1	25,964	15.4	27,021	22.4	40,784	18.7
30 to 39 years of age	16,087	34.3	16,767	33.9	29,906	40.6	69,489	41.2	45,993	38.2	86,256	39.6
40 to 49 years of age	10,315	22.0	11,098	22.4	21,324	29.0	48,204	28.6	31,639	26.3	59,302	27.2
Over 49 years of age	4,255	9.1	4,976	10.1	8,910	12.1	23,397	13.9	13,165	10.9	28,373	13.0
TOTAL	46,910	100.0	49,473	100.0	73,570	100.0	168,602	100.0	120,480	100.0	218,075	100.0

AIDS reporting began in March 1983. HIV reporting began in April 2006. Statistics calculated using reports through 12/31/2013.

Percents may not add to 100% due to rounding. MSM = Men who have sex with men. IDU = Injection drug use

* Includes cases where infection/diagnosis occurred when younger than 13 years of age. ** Age values are based upon age of diagnosis.

Source: California Department of Public Health, Office of AIDS, HIV/AIDS Surveillance Section, data as of December 31, 2013.

For more information, call the HIV/AIDS Surveillance Section at (916) 449-5954.



CUMULATIVE HIV/AIDS CASES IN CALIFORNIA MODE OF EXPOSURE BY RACE/ETHNICITY REPORTED AS OF DECEMBER 31, 2013

TABLE 3.

MODE OF EXPOSURE	HIV CASES					AIDS CASES					TOTAL HIV/AIDS CASES				
	WHITE	BLACK	HISPANIC	OTHER	TOTAL	WHITE	BLACK	HISPANIC	OTHER	TOTAL	WHITE	BLACK	HISPANIC	OTHER	TOTAL
MSM/Bi	16,262	4,428	10,494	2,164	33,348	16,262	13,760	27,045	4,443	111,907	32,524	18,188	37,539	6,607	145,255
IDU	1,225	866	672	136	2,899	1,225	6,231	3,754	494	16,377	2,450	7,097	4,426	630	19,276
MSM/Bi & IDU	1,691	439	670	159	2,959	1,691	2,983	3,119	649	16,220	3,382	3,422	3,789	808	19,179
Heterosexual Contact	1,122	1,341	1,454	271	4,188	1,506	3,531	3,889	629	10,952	2,628	4,872	5,343	900	15,140
Other	1,506	1,871	2,306	396	6,079	1,122	3,263	5,491	799	13,146	2,628	5,134	7,797	1,195	19,225
TOTAL	21,806	8,945	15,596	3,126	49,473	21,806	29,768	43,298	7,014	168,602	43,612	38,713	58,894	10,140	218,075

AIDS reporting began in March 1983. HIV reporting began in April 2006. Statistics calculated using reports through 12/31/2013.

MSM/Bi = Men who have sex with men/Bisexual males. IDU = Injection drug use.

Other Race/Ethnicity includes Asian/Pacific Islander, American Indian/Alaskan Native, Multi-Race and those with unknown or missing race/ethnicity.

Other mode of exposure includes hemophiliac, transfusion of blood or blood products/transplant, confirmed other risk, no identified or reported risk and Perinatal.

Source: California Department of Public Health, Office of AIDS, HIV/AIDS Surveillance Section, data as of December 31, 2013.

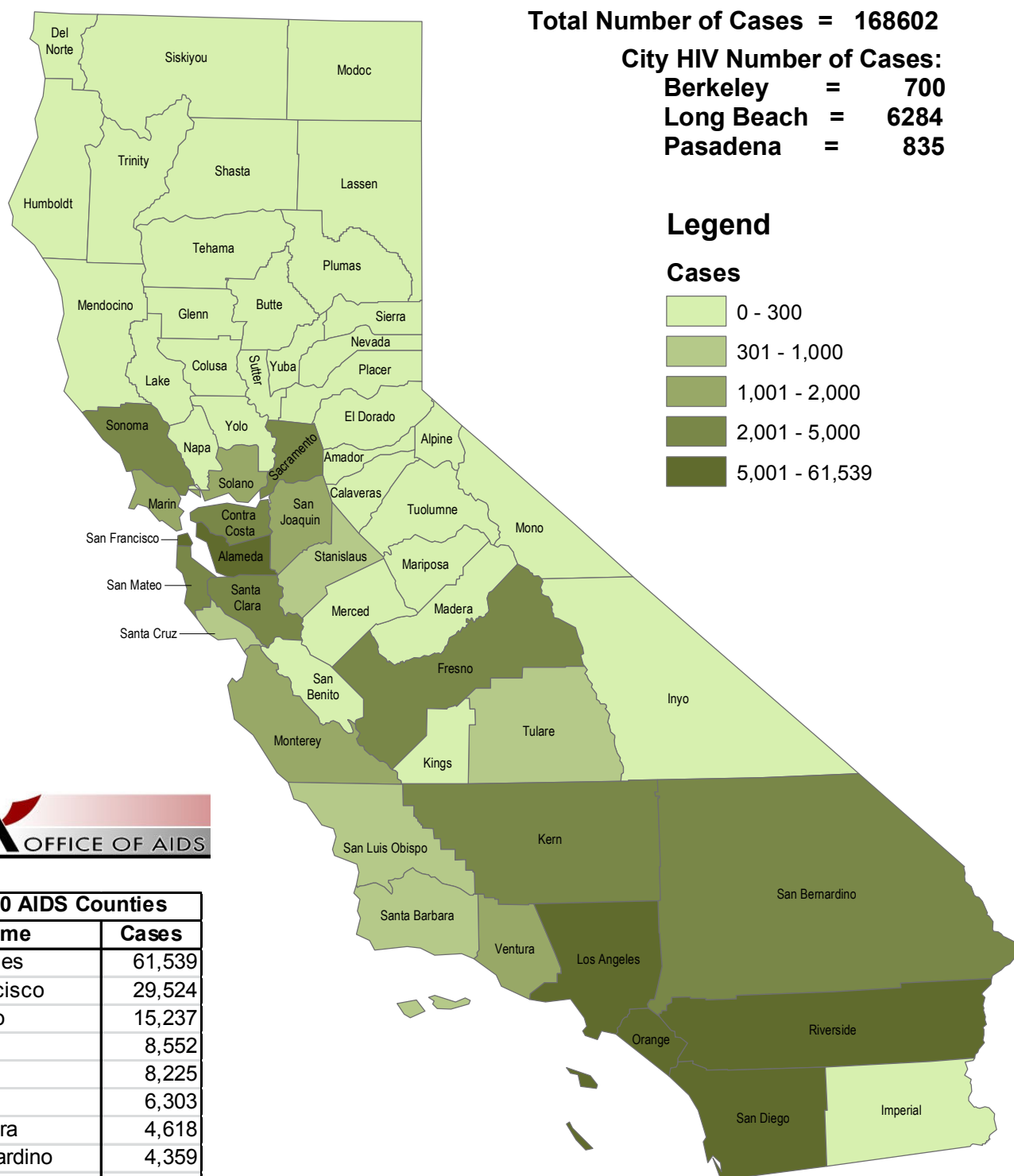
For more information, call the HIV/AIDS Surveillance Section at (916) 449-5954.

AIDS CASES IN CALIFORNIA

QUARTERLY REPORT

CUMULATIVE AS OF DECEMBER 31, 2013

Figure 6.

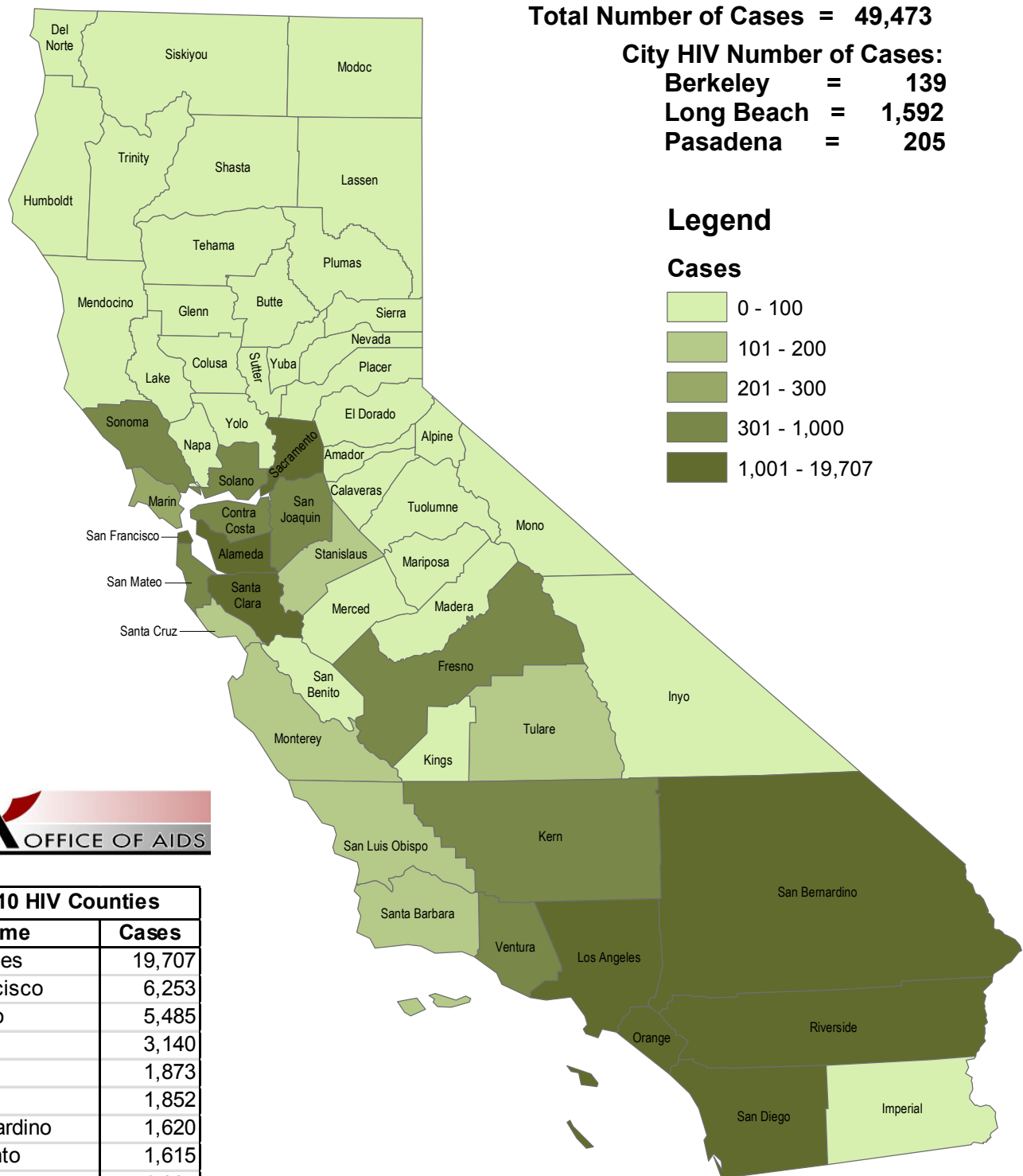


HIV reporting began in April 2006.

Source: California Department of Public Health, Office of AIDS, HIV/AIDS Surveillance Section, data as of December 31, 2013.
 For more information, call the HIV/AIDS Surveillance Section at (916) 449-5954.

HIV CASES IN CALIFORNIA QUARTERLY REPORT CUMULATIVE AS OF DECEMBER 31, 2013

Figure 6.

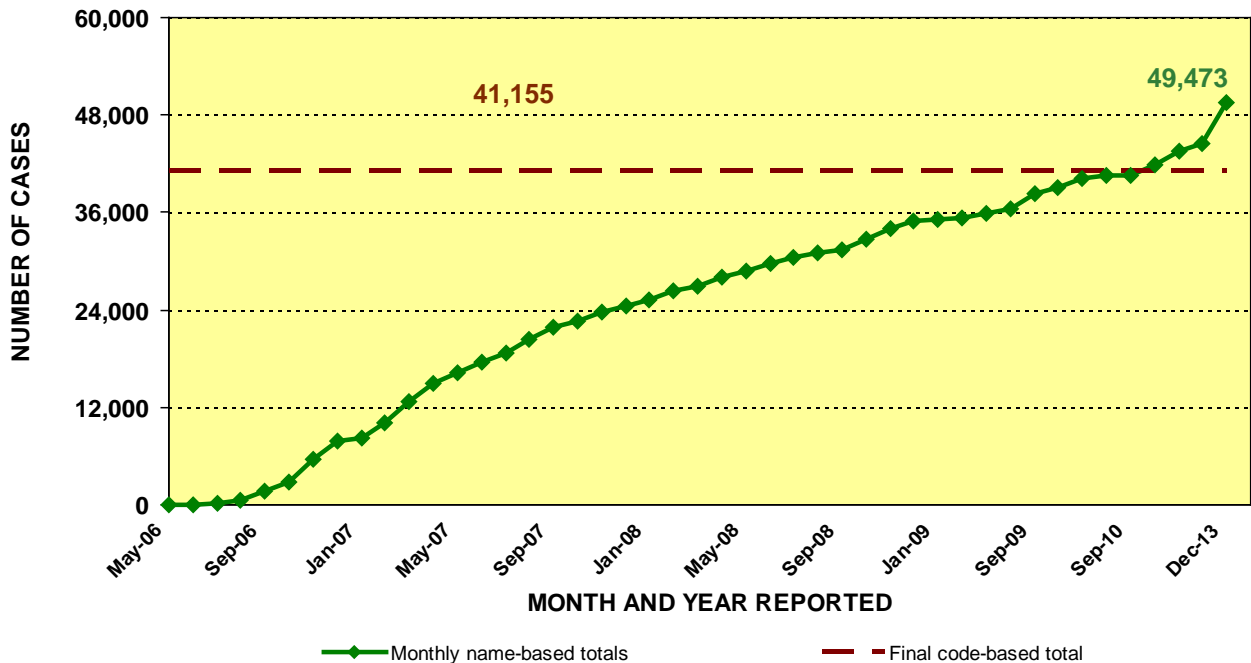


HIV reporting began in April 2006.

Source: California Department of Public Health, Office of AIDS, HIV/AIDS Surveillance Section, data as of December 31, 2013.
 For more information, call the HIV/AIDS Surveillance Section at (916) 449-5954.

NAMES-BASED HIV CASES COMPARED TO FINAL CODE-BASED TOTAL CUMULATIVE AS OF DECEMBER 31, 2013

FIGURE 7.



May-06 data includes cases reported for both April and May 2006.

HIV case totals through March 2006 represent HIV cases reported by non-name code.

Beginning April 2006, HIV case totals are based on HIV cases reported by name.



COUNTY	NAME-BASED	CODE-BASED
Alameda	1,852	1,713
Berkeley	139	123
Alpine	0	1
Amador	12	21
Butte	84	87
Calaveras	8	3
Colusa	3	3
Contra Costa	792	688
Del Norte	8	16
El Dorado	73	49
Fresno	687	692
Glenn	6	4
Humboldt	63	93
Imperial	87	61
Inyo	3	2
Kern	717	534
Kings	93	95
Lake	21	33
Lassen	13	8
Los Angeles	19,707	15,304
Long Beach	1,592	1,397
Pasadena	205	130
Madera	82	106
Marin	294	352
Mariposa	2	5
Mendocino	27	48
Merced	79	48
Modoc	1	0
Mono	0	0
Monterey	191	162
Napa	97	73
Nevada	18	11

COUNTY	NAME-BASED	CODE-BASED
Orange	3,140	2,155
Placer	72	51
Plumas	2	4
Riverside	1,873	1,691
Sacramento	1,615	814
San Benito	14	2
San Bernardino	1,620	1,271
San Diego	5,485	4,944
San Francisco	6,253	6,182
San Joaquin	569	411
San Luis Obispo	169	133
San Mateo	522	392
Santa Barbara	186	143
Santa Clara	1,084	1,017
Santa Cruz	163	152
Shasta	51	16
Sierra	1	0
Siskiyou	8	6
Solano	416	418
Sonoma	390	415
Stanislaus	179	214
Sutter	39	24
Tehama	15	4
Trinity	1	0
Tulare	114	79
Tuolumne	16	13
Ventura	357	313
Yolo	84	62
Yuba	15	14
Unknown	0	3
TOTAL	49,473	41,155

HIV case totals through March 2006 represent HIV cases reported by non-name code. Beginning April 2006, HIV case totals are based on HIV cases reported by name. Due to reporting system differences, HIV cases reported by non-name code and name cannot be combined for unduplicated case counts.

Source: California Department of Public Health, Office of AIDS, HIV/AIDS Surveillance Section, data as of March 31, 2006 and as of December 31, 2013.

For more information, call the HIV/AIDS Surveillance Section at (916) 449-5866.