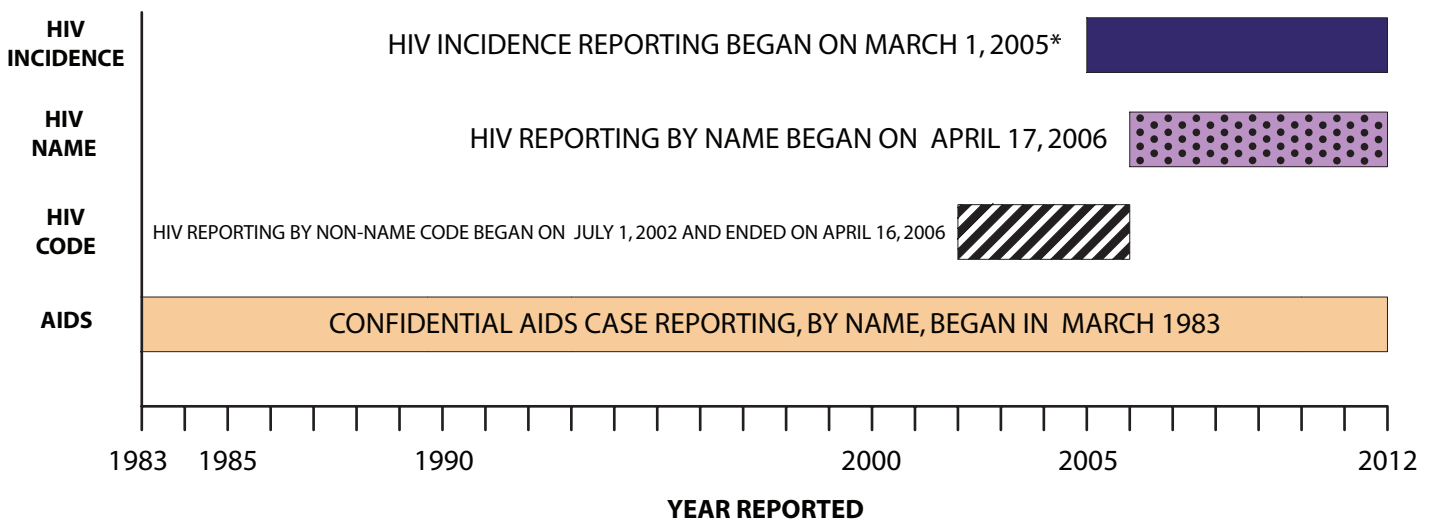


## HIV/AIDS SURVEILLANCE IN CALIFORNIA

Over the years, surveillance of HIV/AIDS has evolved to adapt to changes in the HIV/AIDS epidemic and advances in diagnosis and treatment. In the beginning of the epidemic, surveillance systems across the country only reported AIDS cases. California surveillance later expanded due to increased understanding of the etiology and transmission of AIDS to include HIV reporting (see Figure 1 and 2).

- Confidential AIDS case reporting, by name, began in March 1983
- HIV Reporting was first implemented on July 1, 2002, by non-name code
- HIV reporting by name began on April 17, 2006
- HIV Incidence Surveillance reporting began on March 1, 2005

**FIGURE 1. TIMELINE OF CALIFORNIA HIV/AIDS SURVEILLANCE SYSTEMS**



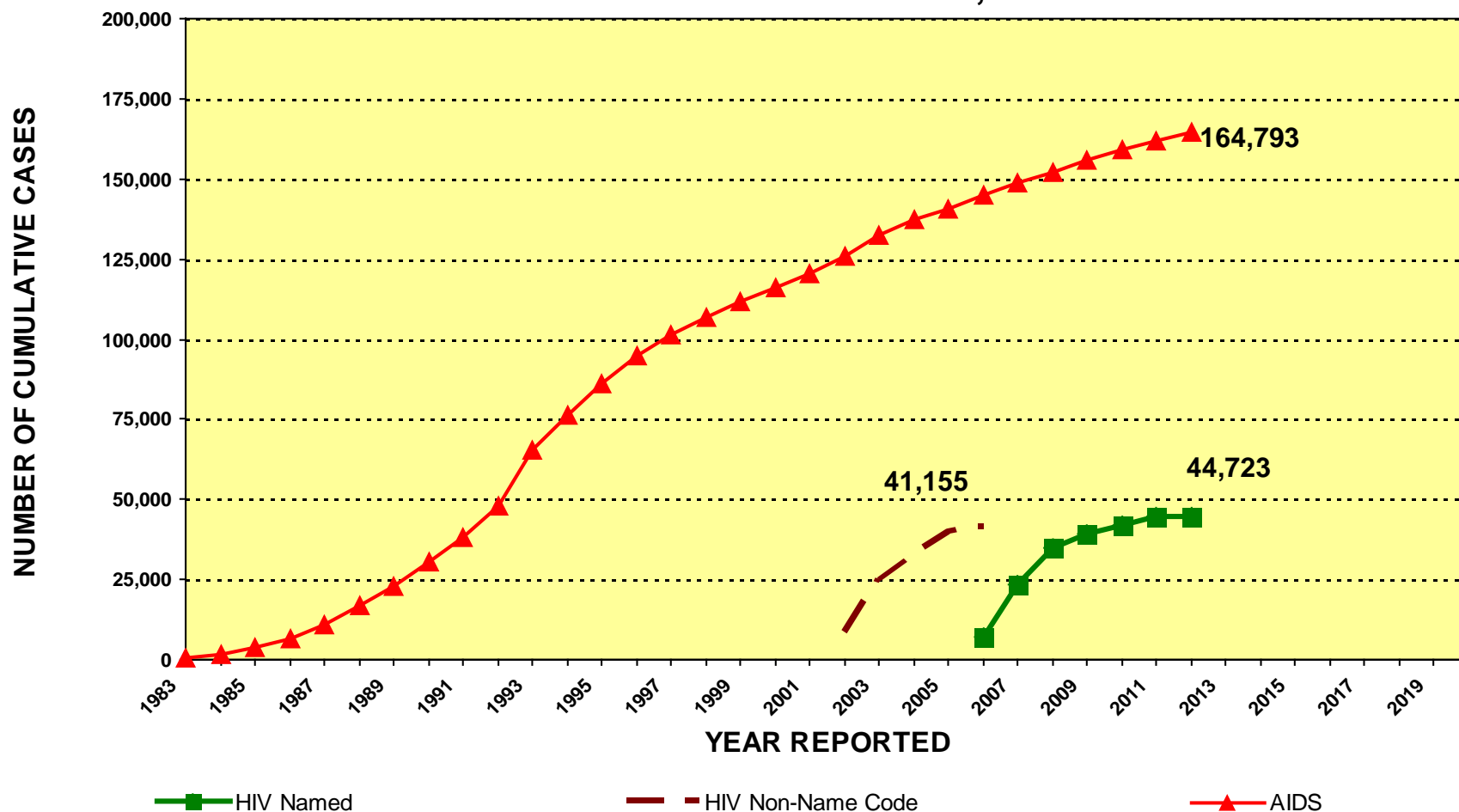
In California and the rest of the United States, HIV infections and AIDS diagnoses are reported through a combination of passive and active surveillance. Passive surveillance is conducted through state required reporting of HIV and AIDS cases by health care providers and reporting of HIV-positive test results from laboratories to Local Health Departments (LHDs). Active surveillance is accomplished through routine visits by LHD staff to hospitals, physician offices, laboratories, counseling and testing (C&T) clinics, and outpatient clinics to ensure completeness, timeliness, and accuracy of reported data. In California and other states, HIV/AIDS surveillance has historically relied heavily upon local health department staff who perform:

- active case surveillance
- on-site chart reviews
- case report completion

To improve timeliness and completeness of reporting and ensure prompt identification and response to emerging problems in the field, California Department of Public Health, Center for Infectious Diseases, Office of AIDS (OA) supports a decentralized reporting system where HIV and AIDS case reports are identified through passive and active surveillance efforts coordinated by California's 61 LHDs. HIV/AIDS surveillance case data, reported to local jurisdictions by health care providers and laboratories, is then sent to OA's HIV/AIDS Surveillance Section. Surveillance Section then submits electronic HIV/AIDS case reports, without personal identifiers, to CDC.

FIGURE 2.

## CALIFORNIA HIV/AIDS SURVEILLANCE CASE ACCUMULATION CUMULATIVE AS OF JUNE 30, 2012



AIDS reporting began in March 1983.

HIV case totals through March 2006 represent HIV cases reported by non-name code. Beginning April 2006, the HIV case total is based on HIV cases reported by name. Due to reporting system differences, HIV cases reported by non-name code and name cannot be combined for unduplicated case counts.

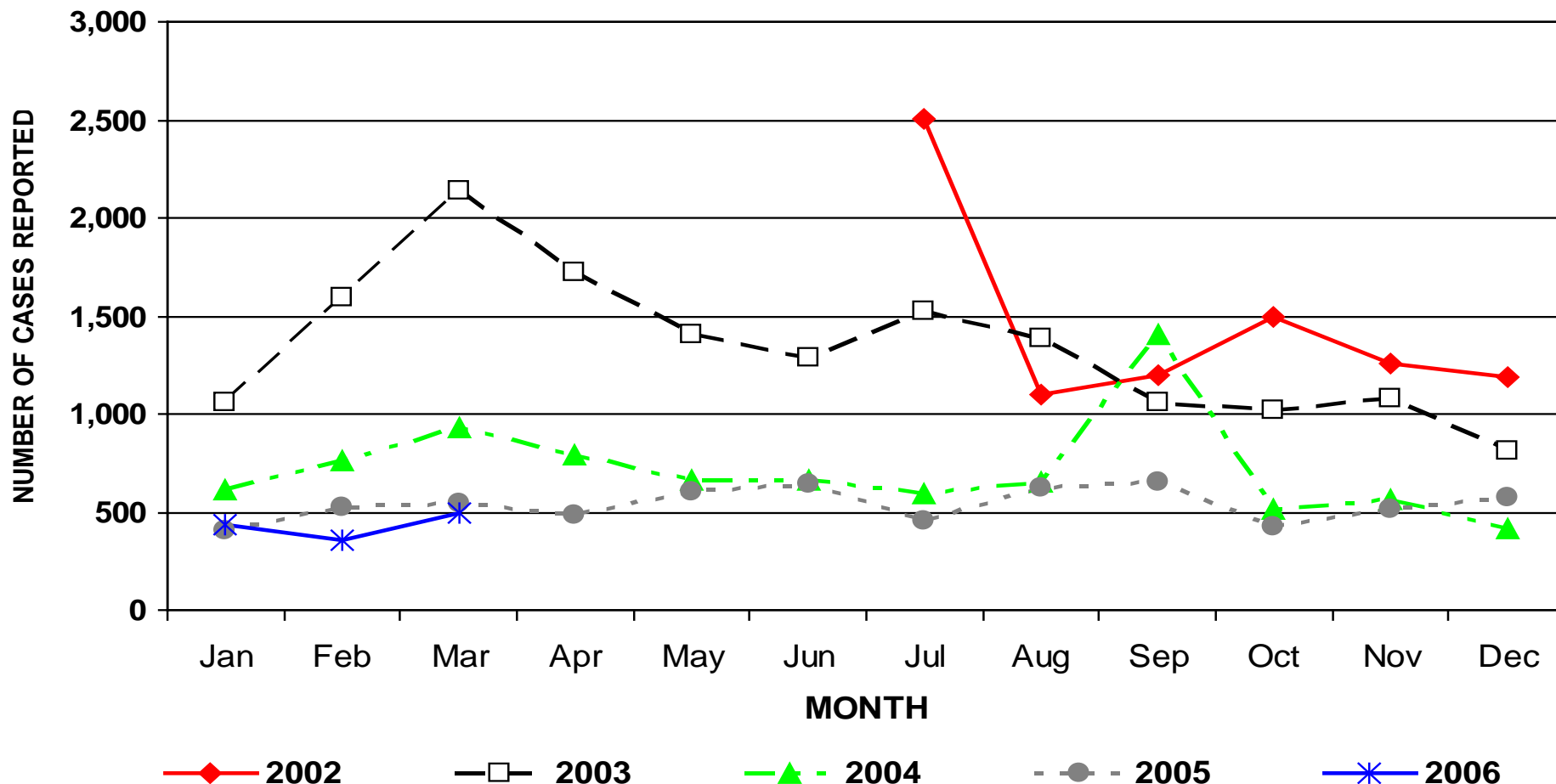
Statistics reported for the current quarter may vary from previous quarters due to data cleaning efforts that are ongoing at the Office of AIDS, Surveillance Section. Those data cleaning efforts include duplicate resolution of cases which may result in a net decrease for some jurisdictions comparing the current quarter to the preceding quarter.

Source: California Department of Public Health, Office of AIDS, HIV/AIDS Surveillance Section, data as of June 30, 2012.

For more information, call the HIV/AIDS Surveillance Section at (916) 449-5954.

FIGURE 3.

# CALIFORNIA HIV NON-NAME-CODE-BASED CASES BY MONTH AND YEAR REPORTED JULY 1, 2002 THROUGH MARCH 31, 2006

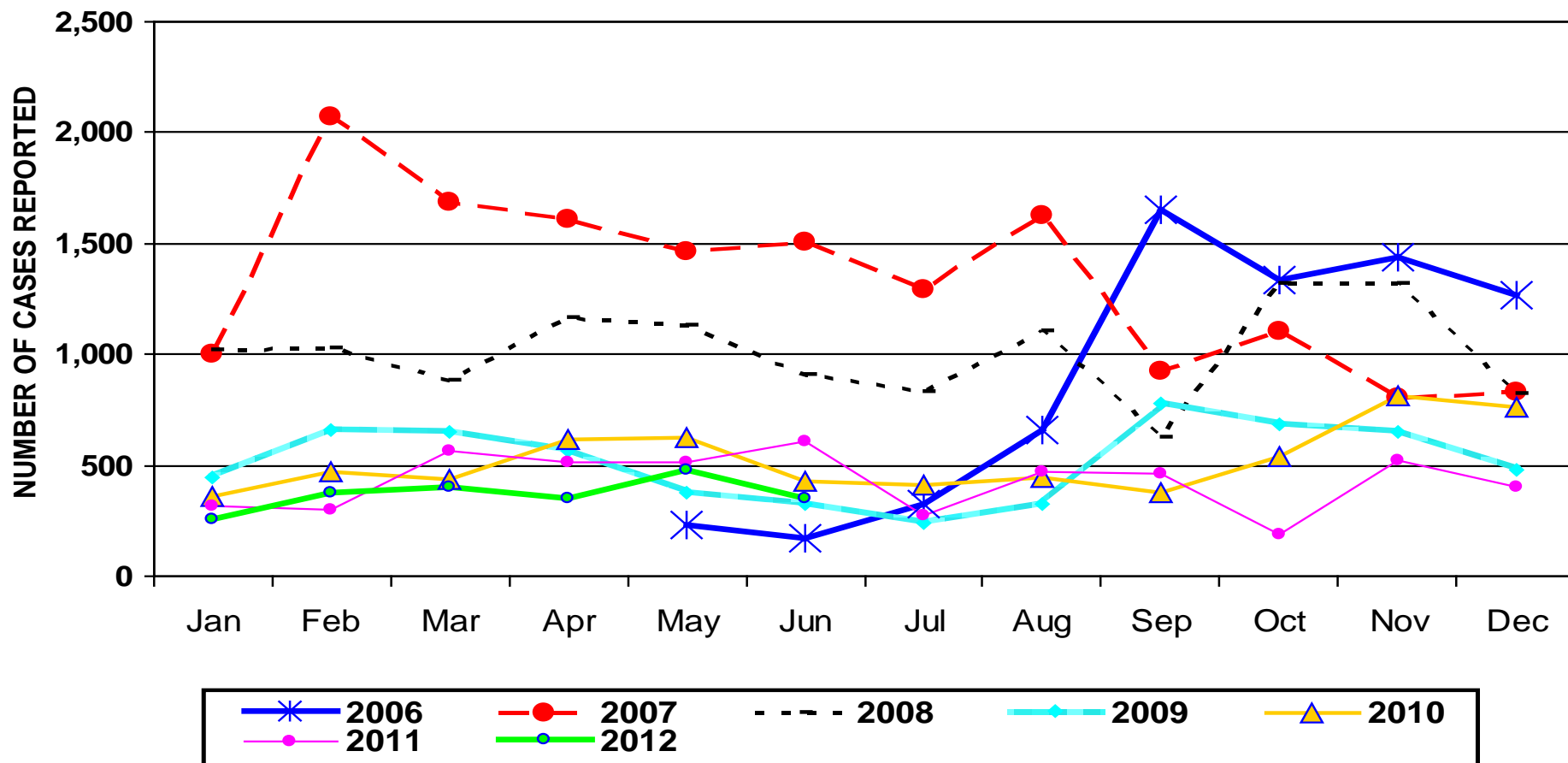


HIV case totals through March 2006 represent HIV cases reported by non-name code. Beginning April 2006, HIV case total are based on HIV cases reported by name. Due to reporting system differences, HIV cases reported by non-name code and name cannot be combined for unduplicated case counts.

Source: California Department of Public Health, Office of AIDS, HIV/AIDS Surveillance Section, data as of March 31, 2006.  
For more information, call the HIV/AIDS Surveillance Section at (916) 449-5954.

FIGURE 4.

# CALIFORNIA HIV NAMES-BASED CASES BY MONTH AND YEAR REPORTED APRIL 17, 2006 THROUGH JUNE 30, 2012



HIV names-based reporting began in April 2006.

HIV case totals which were reported from July 2002 through March 2006 represent HIV cases reported by non-name code. Due to reporting system differences, HIV cases reported by non-name code and name cannot be combined for unduplicated case counts.

Source: California Department of Public Health, Office of AIDS, HIV/AIDS Surveillance Section, data as of June 30, 2012.

For more information, call the HIV/AIDS Surveillance Section at (916) 449-5954.



# SEMI-ANNUAL REPORT OF HIV/AIDS CASES BY COUNTY IN CALIFORNIA

## CUMULATIVE AS OF JUNE 30, 2012

TABLE 1.

COUNTY	HIV				AIDS				COUNTY	HIV				AIDS			
	Total Cases	Living Cases	Deceased		Total Cases	Living Cases	Deceased			Total Cases	Living Cases	Deceased		Total Cases	Living Cases	Deceased	
			Number	%			Number	%				Number	%			Number	%
Alameda	1,493	1,443	50	3	8,291	3,731	4,560	55	Orange	2,909	2,706	203	7	8,058	3,925	4,133	51
Berkeley	112	111	1	1	682	264	418	61	Placer	56	54	2	4	199	94	105	53
Alpine	0	0	0	0	0	0	0	0	Plumas	4	4	0	0	12	5	7	58
Amador	10	9	1	10	52	24	28	54	Riverside	1,575	1,510	65	4	6,067	3,301	2,766	46
Butte	73	64	9	12	280	125	155	55	Sacramento	1,430	1,374	56	4	4,040	1,853	2,187	54
Calaveras	5	5	0	0	21	10	11	52	San Benito	14	13	1	7	46	21	25	54
Colusa	3	3	0	0	15	3	12	80	San Bernardino	1,433	1,327	106	7	4,208	1,963	2,245	53
Contra Costa	725	677	48	7	3,092	1,264	1,828	59	San Diego	4,995	4,821	174	3	14,901	7,266	7,635	51
Del Norte	8	8	0	0	40	25	15	38	San Francisco	5,849	5,464	385	7	29,262	9,528	19,734	67
El Dorado	69	67	2	3	201	73	128	64	San Joaquin	520	501	19	4	1,352	686	666	49
Fresno	580	559	21	4	1,961	984	977	50	San Luis Obispo	147	144	3	2	617	310	307	50
Glenn	6	5	1	17	18	9	9	50	San Mateo	456	440	16	4	2,337	939	1,398	60
Humboldt	63	60	3	5	246	87	159	65	Santa Barbara	165	159	6	4	900	360	540	60
Imperial	69	66	3	4	254	152	102	40	Santa Clara	910	884	26	3	4,560	2,297	2,263	50
Inyo	2	2	0	0	18	9	9	50	Santa Cruz	155	150	5	3	647	277	370	57
Kern	639	618	21	3	2,012	1,249	763	38	Shasta	47	45	2	4	190	76	114	60
Kings	84	81	3	4	237	138	99	42	Sierra	1	1	0	0	4	0	4	100
Lake	19	18	1	5	158	64	94	59	Siskiyou	9	7	2	22	48	21	27	56
Lassen	13	12	1	8	60	29	31	52	Solano	393	377	16	4	1,671	817	854	51
Los Angeles	17,991	17,170	821	5	59,955	26,283	33,672	56	Sonoma	363	350	13	4	2,128	913	1,215	57
Long Beach	1,444	1,380	64	4	6,203	3,085	3,118	50	Stanislaus	159	154	5	3	804	388	416	52
Pasadena	174	163	11	6	823	300	523	64	Sutter	36	35	1	3	80	28	52	65
Madera	82	79	3	4	185	100	85	46	Tehama	11	9	2	18	37	21	16	43
Marin	283	264	19	7	1,686	646	1,040	62	Trinity	1	1	0	0	13	5	8	62
Mariposa	1	1	0	0	19	11	8	42	Tulare	92	86	6	7	382	168	214	56
Mendocino	26	23	3	12	218	81	137	63	Tuolumne	17	17	0	0	74	30	44	59
Merced	70	68	2	3	229	101	128	56	Ventura	318	311	7	2	1,176	527	649	55
Modoc	1	1	0	0	3	0	3	100	Yolo	73	71	2	3	241	107	134	56
Mono	0	0	0	0	7	4	3	43	Yuba	8	8	0	0	69	26	43	62
Monterey	159	154	5	3	1,008	455	553	55									
Napa	92	87	5	5	268	110	158	59									
Nevada	11	11	0	0	136	57	79	58									
TOTAL									44,723	42,578	2,145	5	164,793	71,776	93,017	56	



# CALIFORNIA HIV/AIDS SEMI-ANNUAL SUMMARY REPORT

## CASES REPORTED AS OF JUNE 30, 2012

TABLE 2.

SELECTED INDICATORS	HIV CASES				AIDS CASES				TOTAL HIV/AIDS CASES			
	LIVING		CUMULATIVE		LIVING		CUMULATIVE		LIVING		CUMULATIVE	
	Number	Percent	Number	Percent	Number	Percent	Number	Percent	Number	Percent	Number	Percent
<b>GENDER</b>												
Male	36,869	86.6	38,645	86.4	63,064	87.9	148,832	90.3	99,933	87.4	187,477	89.5
Female	5,424	12.7	5,777	12.9	8,086	11.3	14,935	9.1	13,510	11.8	20,712	9.9
Transgender	285	0.7	301	0.7	626	0.9	1,026	0.6	911	0.8	1,327	0.6
Unknown	0	0.0	0	0.0	0	0.0	0	0.0	0	0.0	0	0.0
<b>RACE/ETHNICITY</b>												
White	19,097	44.9	20,224	45.2	31,534	43.9	87,435	53.1	50,631	44.3	107,659	51.4
Black	7,713	18.1	8,225	18.4	12,965	18.1	29,110	17.7	20,678	18.1	37,335	17.8
Hispanic	13,301	31.2	13,706	30.6	23,666	33.0	41,682	25.3	36,967	32.3	55,388	26.4
Asian/Pacific Islander	1,707	4.0	1,747	3.9	2,551	3.6	4,235	2.6	4,258	3.7	5,982	2.9
American Indian/Alaskan Native	183	0.4	187	0.4	281	0.4	635	0.4	464	0.4	822	0.4
Multi-race	577	1.4	634	1.4	763	1.1	1,654	1.0	1,340	1.2	2,288	1.1
Unknown/Other	0	0.0	0	0.0	16	0.0	42	0.0	16	0.0	42	0.0
<b>EXPOSURE CATEGORY</b>												
MSM/Bisexual Male	29,185	68.5	30,128	67.4	45,986	64.1	109,510	66.5	75,171	65.7	139,638	66.6
Injection Drug Use	2,323	5.5	2,752	6.2	6,191	8.6	16,163	9.8	8,514	7.4	18,915	9.0
MSM/Bisexual Male & IDU	2,579	6.1	2,789	6.2	6,412	8.9	15,923	9.7	8,991	7.9	18,712	8.9
Hemophiliac/Transfusion*	71	0.2	88	0.2	403	0.6	2,203	1.3	474	0.4	2,291	1.1
Heterosexual Contact	3,729	8.8	3,874	8.7	6,738	9.4	10,628	6.4	10,467	9.2	14,502	6.9
Other/Unknown*	4,395	10.3	4,787	10.7	5,695	7.9	9,720	5.9	10,090	8.8	14,507	6.9
Perinatal Exposure	296	0.7	305	0.7	351	0.5	646	0.4	647	0.6	951	0.5
<b>AGE GROUP**</b>												
Under 13 years of age	344	0.8	355	0.8	278	0.4	686	0.4	622	0.5	1,041	0.5
13 to 19 years of age	1,206	2.8	1,226	2.7	575	0.8	815	0.5	1,781	1.6	2,041	1.0
20 to 29 years of age	12,780	30.0	13,068	29.2	12,098	16.9	25,287	15.3	24,878	21.8	38,355	18.3
30 to 39 years of age	15,007	35.2	15,595	34.9	29,560	41.2	68,520	41.6	44,567	39.0	84,115	40.1
40 to 49 years of age	9,508	22.3	10,151	22.7	20,769	28.9	47,043	28.5	30,277	26.5	57,194	27.3
Over 49 years of age	3,733	8.8	4,328	9.7	8,496	11.8	22,442	13.6	12,229	10.7	26,770	12.8
<b>TOTAL</b>	<b>42,578</b>	<b>100.0</b>	<b>44,723</b>	<b>100.0</b>	<b>71,776</b>	<b>100.0</b>	<b>164,793</b>	<b>100.0</b>	<b>114,354</b>	<b>100.0</b>	<b>209,516</b>	<b>100.0</b>

AIDS reporting began in March 1983. HIV reporting began in April 2006. Statistics calculated using reports through 06/30/2012.

Percents may not add to 100% due to rounding. MSM = Men who have sex with men. IDU = Injection drug use

\* Includes cases where infection/diagnosis occurred when younger than 13 years of age. \*\* Age values are based upon age of diagnosis.

Source: California Department of Public Health, Office of AIDS, HIV/AIDS Surveillance Section, data as of June 30, 2012.

For more information, call the HIV/AIDS Surveillance Section at (916) 449-5954.



# CUMULATIVE HIV/AIDS CASES IN CALIFORNIA MODE OF EXPOSURE BY RACE/ETHNICITY REPORTED AS OF JUNE 30, 2012

TABLE 3.

MODE OF EXPOSURE	HIV CASES					AIDS CASES					TOTAL HIV/AIDS CASES				
	WHITE	BLACK	HISPANIC	OTHER	TOTAL	WHITE	BLACK	HISPANIC	OTHER	TOTAL	WHITE	BLACK	HISPANIC	OTHER	TOTAL
MSM/Bi	15,124	4,048	9,170	1,786	30,128	65,939	13,410	25,994	4,167	109,510	81,063	17,458	35,164	5,953	139,638
IDU	1,155	852	628	117	2,752	5,838	6,183	3,672	470	16,163	6,993	7,035	4,300	587	18,915
MSM/Bi & IDU	1,616	433	594	146	2,789	9,356	2,945	3,012	610	15,923	10,972	3,378	3,606	756	18,712
Heterosexual Contact	1,048	1,267	1,337	222	3,874	2,827	3,447	3,765	589	10,628	3,875	4,714	5,102	811	14,502
Other	1,281	1,625	1,977	297	5,180	3,475	3,125	5,239	730	12,569	4,756	4,750	7,216	1,027	17,749
<b>TOTAL</b>	20,224	8,225	13,706	2,568	44,723	87,435	29,110	41,682	6,566	164,793	107,659	37,335	55,388	9,134	209,516

AIDS reporting began in March 1983. HIV reporting began in April 2006. Statistics calculated using reports through 06/30/2012.

MSM/Bi = Men who have sex with men/Bisexual males. IDU = Injection drug use.

Other Race/Ethnicity includes Asian/Pacific Islander, American Indian/Alaskan Native, Multi-Race and those with unknown or missing race/ethnicity.

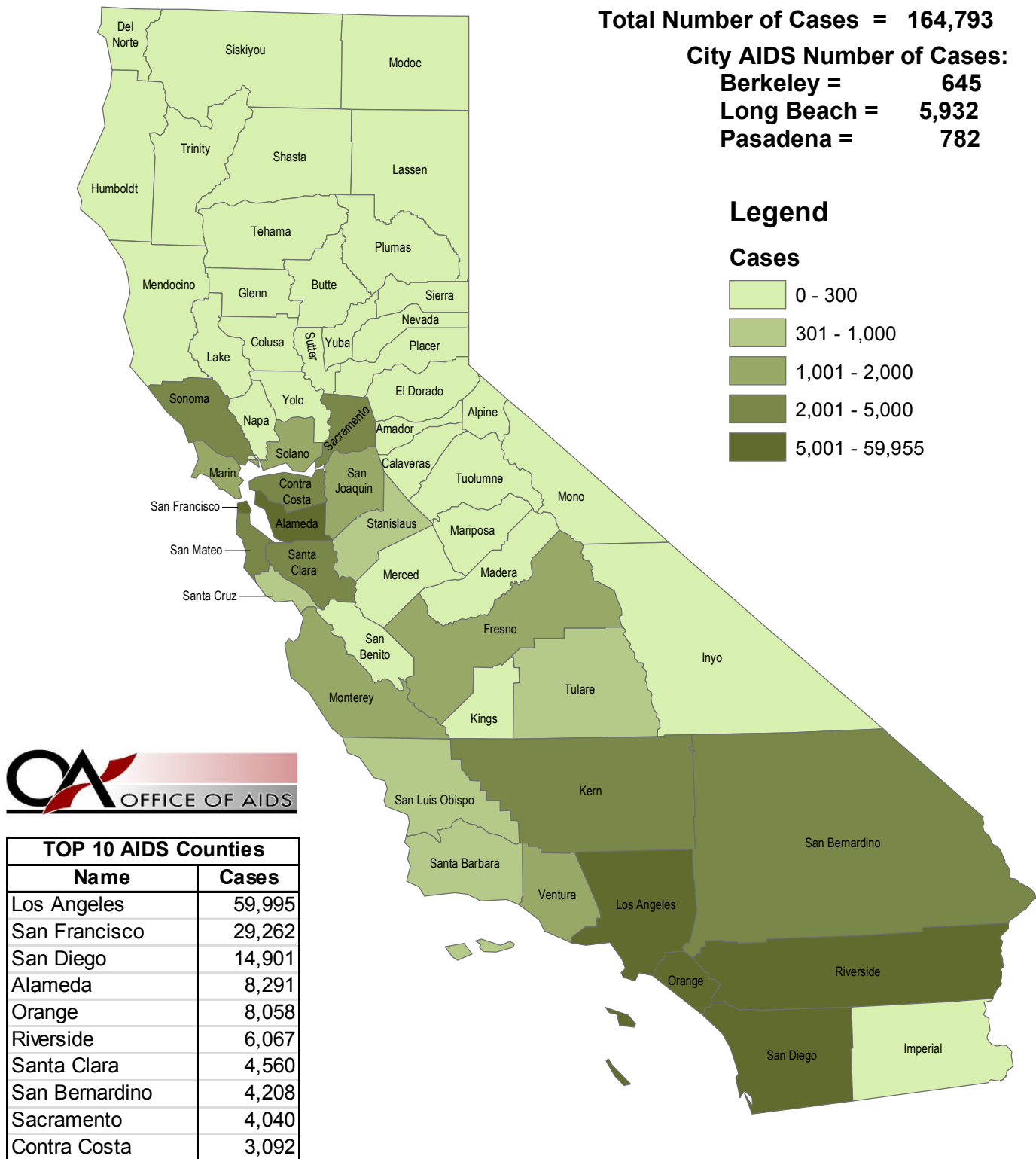
Other mode of exposure includes hemophiliac, transfusion of blood or blood products/transplant, confirmed other risk, no identified or reported risk and Perinatal.

Source: California Department of Public Health, Office of AIDS, HIV/AIDS Surveillance Section, data as of June 30, 2012.

For more information, call the HIV/AIDS Surveillance Section at (916) 449-5954.

# AIDS CASES IN CALIFORNIA QUARTERLY REPORT CUMULATIVE AS OF JUNE 30, 2012

## Figure 5.



HIV reporting began in April 2006.

Source: California Department of Public Health, Office of AIDS, HIV/AIDS Surveillance Section, data as of June 30, 2012.  
 For more information, call the HIV/AIDS Surveillance Section at (916) 449-5954.

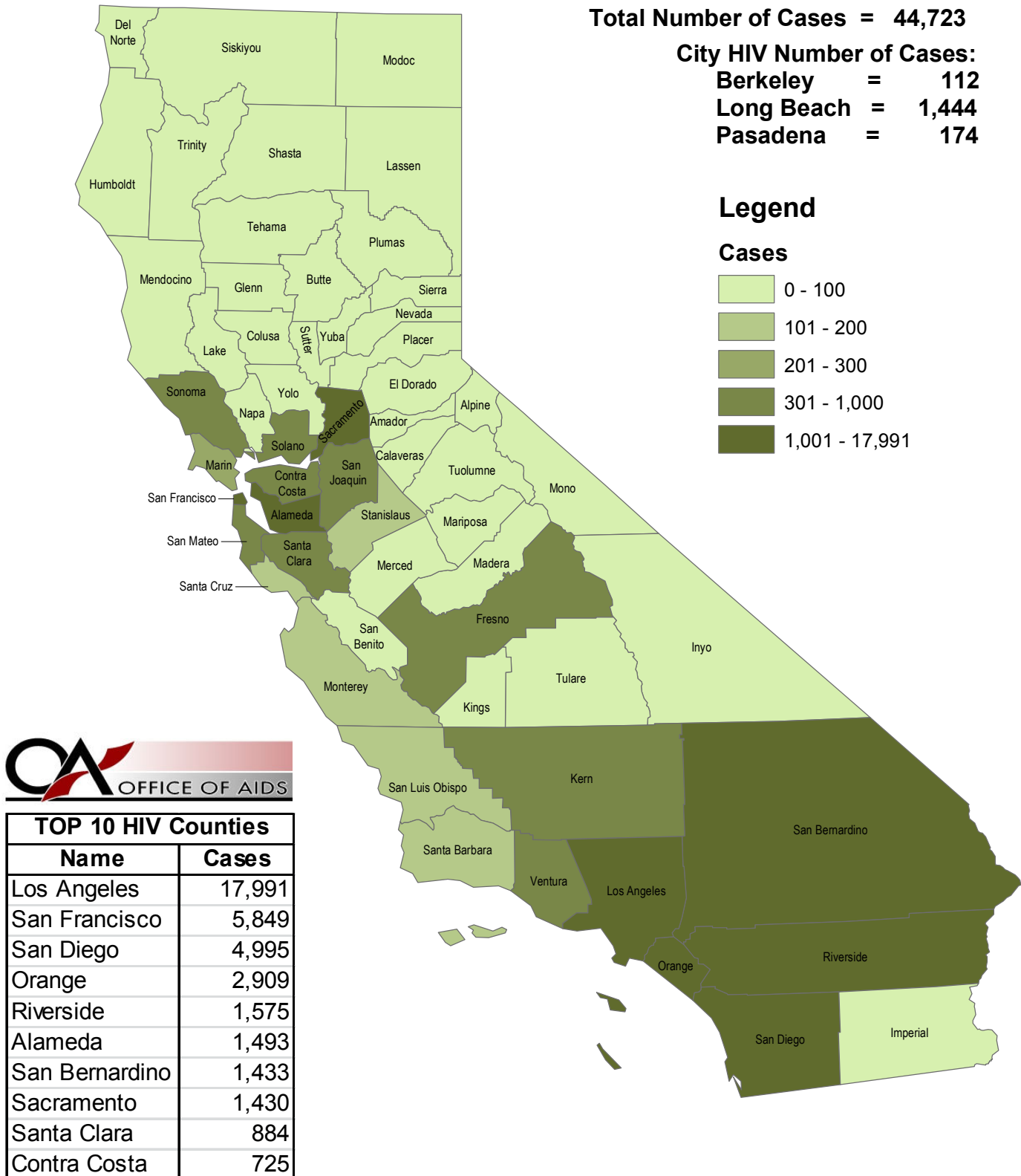


# HIV (NON-AIDS) CASES IN CALIFORNIA

## QUARTERLY REPORT

### CUMULATIVE AS OF JUNE 30, 2012

Figure 6.

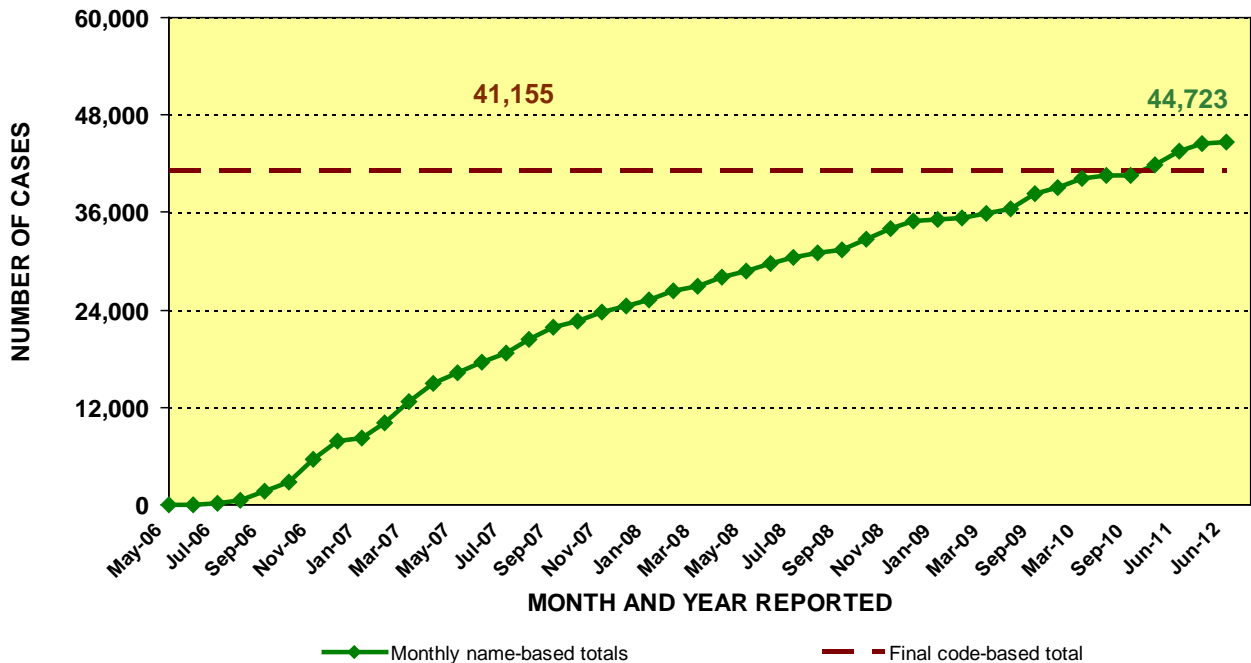


HIV reporting began in April 2006.

Source: California Department of Public Health, Office of AIDS, HIV/AIDS Surveillance Section, data as of June 30, 2012.  
 For more information, call the HIV/AIDS Surveillance Section at (916) 449-5954.

# NAMES-BASED HIV CASES COMPARED TO FINAL CODE-BASED TOTAL CUMULATIVE AS OF JUNE 30, 2012

FIGURE 7.



May-06 data includes cases reported for both April and May 2006.

HIV case totals through March 2006 represent HIV cases reported by non-name code.

Beginning April 2006, HIV case totals are based on HIV cases reported by name.



COUNTY	NAME-BASED	CODE-BASED
Alameda	1,493	1,713
Berkeley	112	123
Alpine	0	1
Amador	10	21
Butte	73	87
Calaveras	5	3
Colusa	3	3
Contra Costa	725	688
Del Norte	8	16
El Dorado	69	49
Fresno	580	692
Glenn	6	4
Humboldt	63	93
Imperial	69	61
Inyo	2	2
Kern	639	534
Kings	84	95
Lake	19	33
Lassen	13	8
Los Angeles	17,991	15,304
Long Beach	1,444	1,397
Pasadena	174	130
Madera	82	106
Marin	283	352
Mariposa	1	5
Mendocino	26	48
Merced	70	48
Modoc	1	0
Mono	0	0
Monterey	159	162
Napa	92	73
Nevada	11	11

COUNTY	NAME-BASED	CODE-BASED
Orange	2,909	2,155
Placer	56	51
Plumas	4	4
Riverside	1,575	1,691
Sacramento	1,430	814
San Benito	14	2
San Bernardino	1,433	1,271
San Diego	4,995	4,944
San Francisco	5,849	6,182
San Joaquin	520	411
San Luis Obispo	144	133
San Mateo	440	392
Santa Barbara	159	143
Santa Clara	884	1,017
Santa Cruz	150	152
Shasta	45	16
Sierra	1	0
Siskiyou	7	6
Solano	377	418
Sonoma	350	415
Stanislaus	154	214
Sutter	35	24
Tehama	9	4
Trinity	1	0
Tulare	86	79
Tuolumne	17	13
Ventura	311	313
Yolo	71	62
Yuba	8	14
		3
<b>TOTAL</b>	<b>44,723</b>	<b>41,155</b>

HIV case totals through March 2006 represent HIV cases reported by non-name code. Beginning April 2006, HIV case totals are based on HIV cases reported by name. Due to reporting system differences, HIV cases reported by non-name code and name cannot be combined for unduplicated case counts.

Source: California Department of Public Health, Office of AIDS, HIV/AIDS Surveillance Section, data as of March 31, 2006 and as of June 30, 2012.

For more information, call the HIV/AIDS Surveillance Section at (916) 449-5866.