

CDPH SNF QASP Quarterly Benchmark Rates SFY 2018-19 Quarter 1 through Quarter 4

Overview

This report contains the preliminary results and statistics for the California Skilled Nursing Facility (SNF) Quality and Accountability Supplemental Payment (QASP) Program using the final, closed out data for State Fiscal Year (SFY) July 1, 2018 through June 30, 2019. For SFY 2018-19, an additional measure, Received an Antipsychotic Medication (Long Stay), is included. The measure rates are calculated across the Performance Period that is evaluated annually to determine incentive payment awards. This report includes four quarters of data, SFY Q1, SFY Q2, SFY Q3, and SFY Q4. Table 1 provides an overview of the measures analyzed, including the statewide mean and the 75th percentile, for the SFY 18-19 aggregate. Of note, only facilities meeting the minimum reporting requirements are included in the analysis for the quarterly rate calculation for each measure. The 30-Day SNF Rehospitalization measure and Staff Retention measure rates are only calculated annually. The rates for these two measures presented in this report represent the 2018-2019 performance period (i.e., July 1, 2018 through June 30, 2019).

Table 1—Overview of Measures and Rates (SFY 2018-19 Q4 Aggregate)

Measure	Statewide Mean	Statewide 75th Percentile
Use of Physical Restraints (Long Stay)	0.274%	0.000%
Influenza Vaccination (Short Stay)*	92.186%	99.393%
Pneumococcal Vaccination (Short Stay)*	91.423%	99.456%
Urinary Tract Infection (Long Stay)	1.740%	0.401%
Loss of Bowel or Bladder Control (Long Stay)	42.555%	30.806%
Self-Report Moderate to Severe Pain (Short Stay)	4.733%	0.215%
Self-Report Moderate to Severe Pain (Long Stay)	2.577%	0.000%
Increased Need for Help with Activities of Daily Living (Long Stay)	9.291%	5.556%

¹ The Received an Antipsychotic Medication (Long Stay) measure has been modified from the Centers for Medicare & Medicaid Services’ (CMS’) specifications to account for the addition of new conditions (manic depression, psychotic disorder, and traumatic brain injury) as exclusion criteria.

² For the SFY 2018-19 Annual Report, the Use of Physical Restraints (Long Stay) measure will not be scored and used to determine incentive payment awards as it is a monitoring-only measure.

³ For SFY 2018-19, the Percent of High Risk Residents with Facility-Acquired Pressure Ulcer Incidence (Long Stay) measure is not included due to the removal of the M0800 field from the MDS 3.0 Item Set, which was previously used to calculate this measure. Starting with SFY 2019-20, a modified version of this measure will be included in the Quarterly Benchmark Reports.

⁴ The annual minimum threshold (i.e., minimum denominator size) for reporting clinical short- and long-stay measures is 20 and 30, respectively. To allow for more consistent quarterly reporting, a quarterly minimum threshold of 5 and 8 was set for clinical short- and long-stay measures, respectively. Based on this quarterly minimum threshold, the thresholds for the Q1, Q2, Q3, and Q4 Aggregate short- and long-stay measures are 20 and 30, respectively.

⁵ A minimum threshold of 30 and a tracking rate of greater than or equal to 95 percent was applied to the 30-Day SNF Rehospitalization measure. Also, for the Staff Retention measure, no minimum threshold was applied. The detailed methodology for calculating these measures can be found on the CDPH SNF QASP website.

Measure	Statewide Mean	Statewide 75th Percentile
Received an Antipsychotic Medication (Long Stay)	3.678%	0.482%
30-Day SNF Rehospitalization	16.490%	13.532%
Staff Retention*	71.396%	80.645%

* For the Influenza Vaccination (Short Stay), Pneumococcal Vaccination (Short Stay), and Staff Retention measures, a higher rate indicates better performance.

The table below displays the performance period each quarter represents in this report. The SFY 2018-2019 Annual Report performance period represents the payments that will be distributed to facilities in April 2020.

Table 2—Performance Periods for Quarterly Benchmarks Report

Quarter	Performance Period
SFY 2018-19 Q1	July 1, 2018 – September 30, 2018
SFY 2018-19 Q2	October 1, 2018 – December 31, 2018
SFY 2018-19 Q3	January 1, 2019 – March 31, 2019
SFY 2018-19 Q4	April 1, 2019 – June 30, 2019
SFY 2018-19 Q4 Aggregate	July 1, 2018 – June 30, 2019

A greater number of facilities may be ineligible for reporting a quality measure within an individual quarter due to the minimum denominator thresholds; however, the facilities might be eligible for reporting the quality measure for the SNF QASP Annual Report (i.e., meet the minimum denominator threshold when all four quarters were combined). The facilities with fewer residents are more likely to have extreme rates, as a change of one resident in the numerator will have a larger impact on the rate.

The quarterly rate for each measure displayed in the tables below includes all facilities present in the data, while the aggregate rate is limited to the facilities included in the SFY 2017-2018 Annual Report.

Use of Physical Restraints (Long Stay)

Figure 1 shows the rate distribution for the Use of Physical Restraints (Long Stay) measure in 5-percent intervals. Each interval includes all facilities whose score is equal to or greater than the lower interval and less than the higher interval. Note that for the Use of Physical Restraints (Long Stay) measure, a lower rate indicates better performance.

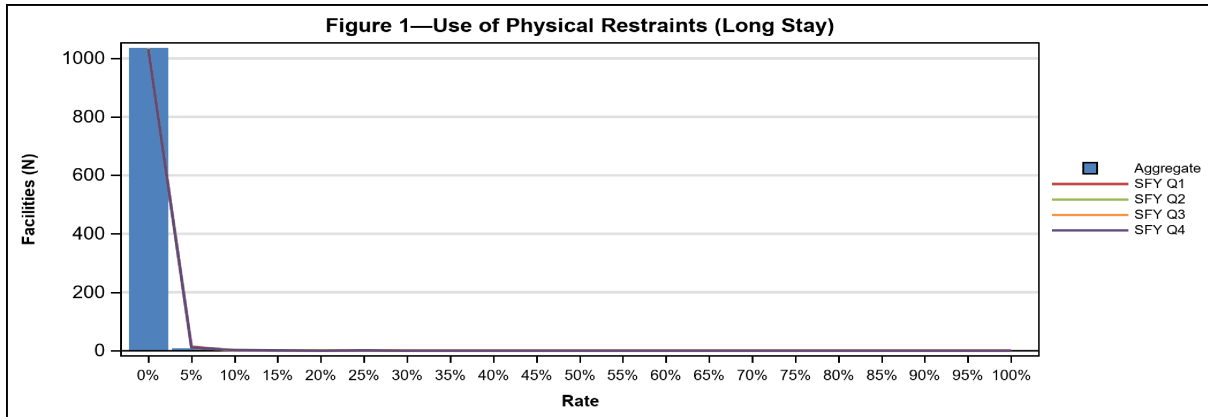


Table 3 shows the number of facilities evaluated, percentile distribution, mean, minimum, and maximum rate for the Use of Physical Restraints (Long Stay) measure.

Table 3—Use of Physical Restraints (Long Stay)

Performance Period	Number of Facilities	10th percentile	25th percentile	50th percentile	75th percentile	90th percentile	Mean	Minimum Rate	Maximum Rate
SFY Q1	1,052	0.000%	0.000%	0.000%	0.000%	0.000%	0.295%	0.000%	25.210%
SFY Q2	1,050	0.000%	0.000%	0.000%	0.000%	0.000%	0.279%	0.000%	22.131%
SFY Q3	1,045	0.000%	0.000%	0.000%	0.000%	0.000%	0.263%	0.000%	28.099%
SFY Q4	1,047	0.000%	0.000%	0.000%	0.000%	0.000%	0.255%	0.000%	27.642%
Aggregate	1,049	0.465%	0.000%	0.000%	0.000%	0.000%	0.274%	0.000%	25.773%

Influenza Vaccination (Short Stay)

Figure 2 shows the rate distribution for the Influenza Vaccination (Short Stay) measure in 5-percent intervals. Each interval includes all facilities whose score is greater than the lower interval and less than or equal to the higher interval. Note that for the Influenza Vaccination (Short Stay) measure, a higher rate indicates better performance.

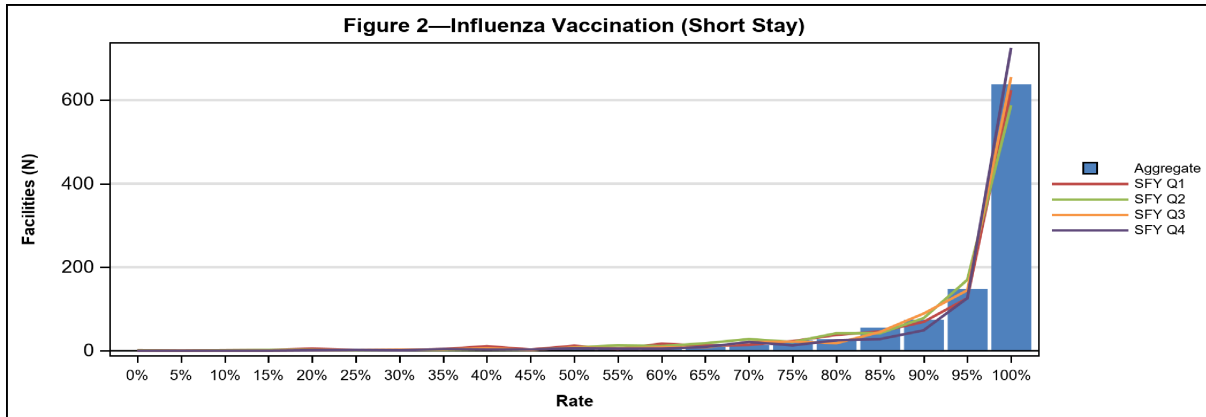


Table 4 shows the number of facilities evaluated, percentile distribution, mean, minimum, and maximum rate for the Influenza Vaccination (Short Stay) measure.

Table 4—Influenza Vaccination (Short Stay)

Performance Period	Number of Facilities	10th percentile	25th percentile	50th percentile	75th percentile	90th percentile	Mean	Minimum Rate	Maximum Rate
SFY Q1	1,016	72.727%	88.889%	97.794%	100.000%	100.000%	90.937%	0.000%	100.000%
SFY Q2	1,035	73.016%	88.889%	96.309%	100.000%	100.000%	90.922%	0.000%	100.000%
SFY Q3	1,042	79.310%	90.909%	97.429%	100.000%	100.000%	92.494%	18.182%	100.000%
SFY Q4	1,026	81.600%	93.750%	98.957%	100.000%	100.000%	93.970%	20.000%	100.000%
Aggregate	1,035	78.082%	90.777%	96.935%	99.393%	100.000%	92.186%	22.363%	100.000%

Pneumococcal Vaccination (Short Stay)

Figure 3 shows the rate distribution for the Pneumococcal Vaccination (Short Stay) measure in 5-percent intervals. Each interval includes all facilities whose score is greater than the lower interval and less than or equal to the higher interval. Note that for the Pneumococcal Vaccination (Short Stay) measure, a higher rate indicates better performance.

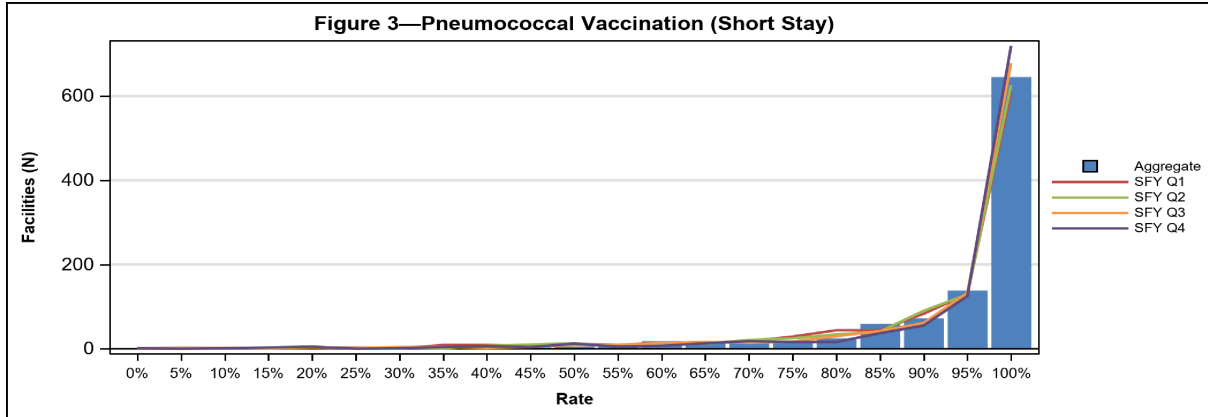


Table 5 shows the number of facilities evaluated, percentile distribution, mean, minimum, and maximum rate for the Pneumococcal Vaccination (Short Stay) measure.

Table 5—Pneumococcal Vaccination (Short Stay)

Performance Period	Number of Facilities	10th percentile	25th percentile	50th percentile	75th percentile	90th percentile	Mean	Minimum Rate	Maximum Rate
SFY Q1	1,046	69.960%	87.562%	96.875%	100.000%	100.000%	89.810%	0.000%	100.000%
SFY Q2	1,040	71.563%	88.889%	97.174%	100.000%	100.000%	90.770%	0.000%	100.000%
SFY Q3	1,045	75.439%	91.603%	97.987%	100.000%	100.000%	91.999%	8.955%	100.000%
SFY Q4	1,048	77.778%	92.391%	98.573%	100.000%	100.000%	92.608%	0.000%	100.000%
Aggregate	1,045	74.924%	90.000%	97.170%	99.456%	100.000%	91.423%	9.302%	100.000%

Urinary Tract Infection (Long Stay)

Figure 4 shows the rate distribution for the Urinary Tract Infection (Long Stay) measure in 5-percent intervals. Each interval includes all facilities whose score is equal to or greater than the lower interval and less than the higher interval. Note that for the Urinary Tract Infection (Long Stay) measure, a lower rate indicates better performance.

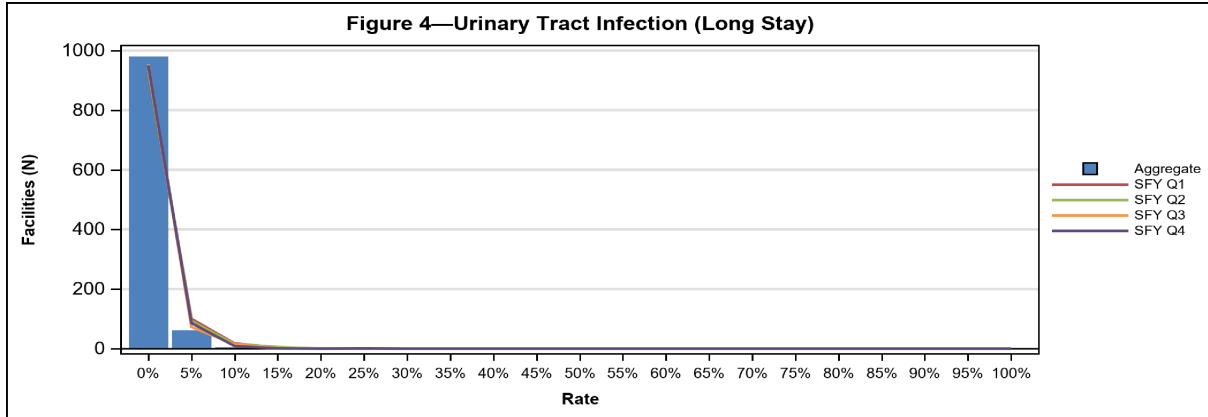


Table 6 shows the number of facilities evaluated, percentile distribution, mean, minimum, and maximum rate for the Urinary Tract Infection (Long Stay) measure.

Table 6—Urinary Tract Infection (Long Stay)

Performance Period	Number of Facilities	10th percentile	25th percentile	50th percentile	75th percentile	90th percentile	Mean	Minimum Rate	Maximum Rate
SFY Q1	1,051	5.405%	2.874%	0.980%	0.000%	0.000%	1.883%	0.000%	22.222%
SFY Q2	1,049	5.229%	2.752%	0.877%	0.000%	0.000%	1.840%	0.000%	18.750%
SFY Q3	1,044	4.545%	2.592%	0.000%	0.000%	0.000%	1.631%	0.000%	17.021%
SFY Q4	1,047	4.762%	2.597%	0.000%	0.000%	0.000%	1.619%	0.000%	25.000%
Aggregate	1,047	4.138%	2.490%	1.224%	0.401%	0.000%	1.740%	0.000%	12.281%

Loss of Bowel or Bladder Control (Long Stay)

Figure 5 shows the rate distribution for the Loss of Bowel or Bladder Control (Long Stay) measure in 5-percent intervals. Each interval includes all facilities whose score is equal to or greater than the lower interval and less than the higher interval. Note that for the Loss of Bowel or Bladder Control (Long Stay) measure, a lower rate indicates better performance.

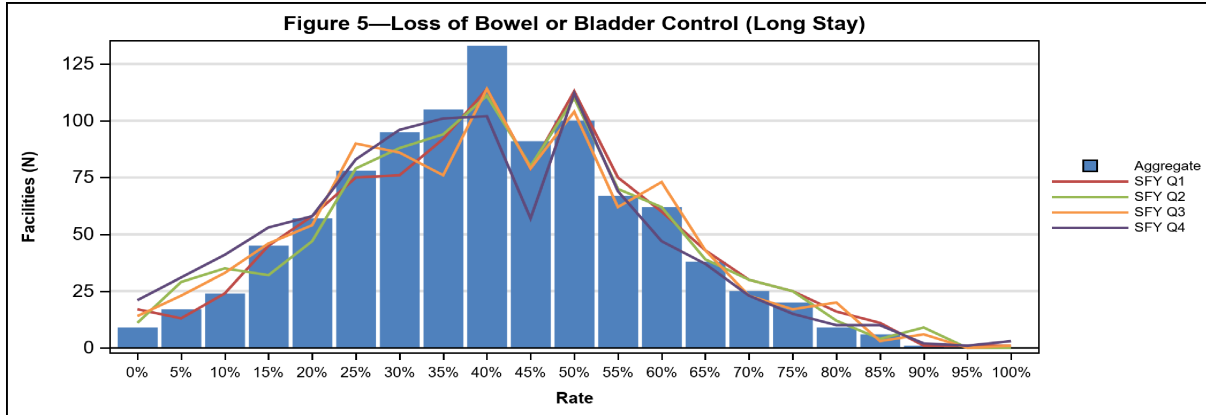


Table 7 shows the number of facilities evaluated, percentile distribution, mean, minimum, and maximum rate for the Loss of Bowel or Bladder Control (Long Stay) measure.

Table 7—Loss of Bowel or Bladder Control (Long Stay)

Performance Period	Number of Facilities	10th percentile	25th percentile	50th percentile	75th percentile	90th percentile	Mean	Minimum Rate	Maximum Rate
SFY Q1	969	68.421%	55.556%	43.750%	30.000%	19.231%	43.641%	0.000%	100.000%
SFY Q2	967	67.742%	55.556%	42.857%	30.556%	18.254%	42.978%	0.000%	94.118%
SFY Q3	967	66.667%	55.556%	42.308%	28.571%	18.182%	42.483%	0.000%	100.000%
SFY Q4	972	65.217%	53.333%	40.000%	26.975%	15.152%	40.384%	0.000%	100.000%
Aggregate	982	65.000%	54.054%	42.084%	30.806%	20.238%	42.555%	0.000%	93.333%

Self-Report Moderate to Severe Pain (Short Stay)

Figure 6 shows the rate distribution for the Self-Report Moderate to Severe Pain (Short Stay) measure in 5-percent intervals. Each interval includes all facilities whose score is equal to or greater than the lower interval and less than the higher interval. Note that for the Self-Report Moderate to Severe Pain (Short Stay) measure, a lower rate indicates better performance.

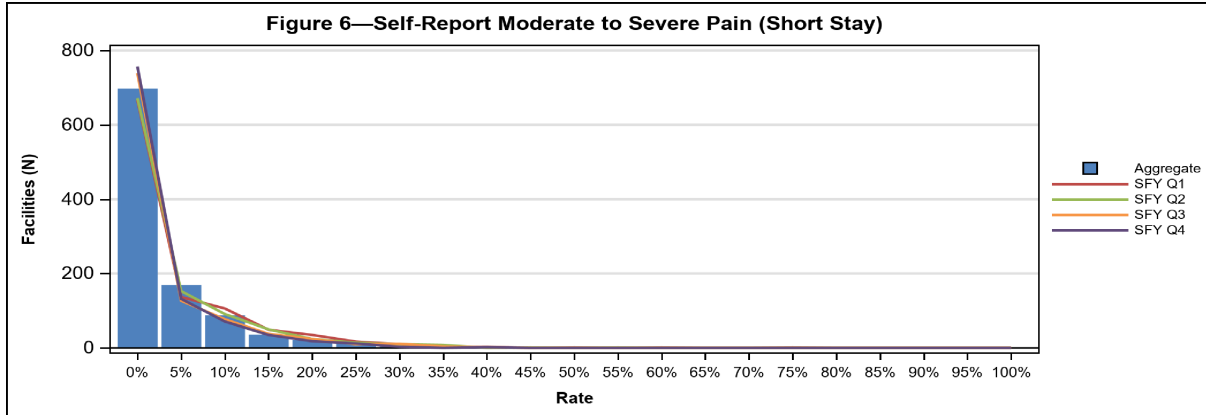


Table 8 shows the number of facilities evaluated, percentile distribution, mean, minimum, and maximum rate for the Self-Report Moderate to Severe Pain (Short Stay) measure.

Table 8—Self-Report Moderate to Severe Pain (Short Stay)

Performance Period	Number of Facilities	10th percentile	25th percentile	50th percentile	75th percentile	90th percentile	Mean	Minimum Rate	Maximum Rate
SFY Q1	1,029	16.304%	8.000%	2.162%	0.000%	0.000%	5.570%	0.000%	77.778%
SFY Q2	1,024	15.497%	7.692%	1.539%	0.000%	0.000%	5.152%	0.000%	55.556%
SFY Q3	1,032	13.743%	5.926%	1.047%	0.000%	0.000%	4.413%	0.000%	42.857%
SFY Q4	1,030	12.024%	5.333%	0.800%	0.000%	0.000%	3.826%	0.000%	42.857%
Aggregate	1,033	13.402%	6.744%	2.034%	0.215%	0.000%	4.733%	0.000%	37.799%

Self-Report Moderate to Severe Pain (Long Stay)

Figure 7 shows the rate distribution for the Self-Report Moderate to Severe Pain (Long Stay) measure in 5-percent intervals. Each interval includes all facilities whose score is equal to or greater than the lower interval and less than the higher interval. Note that for the Self-Report Moderate to Severe Pain (Long Stay) measure, a lower rate indicates better performance.

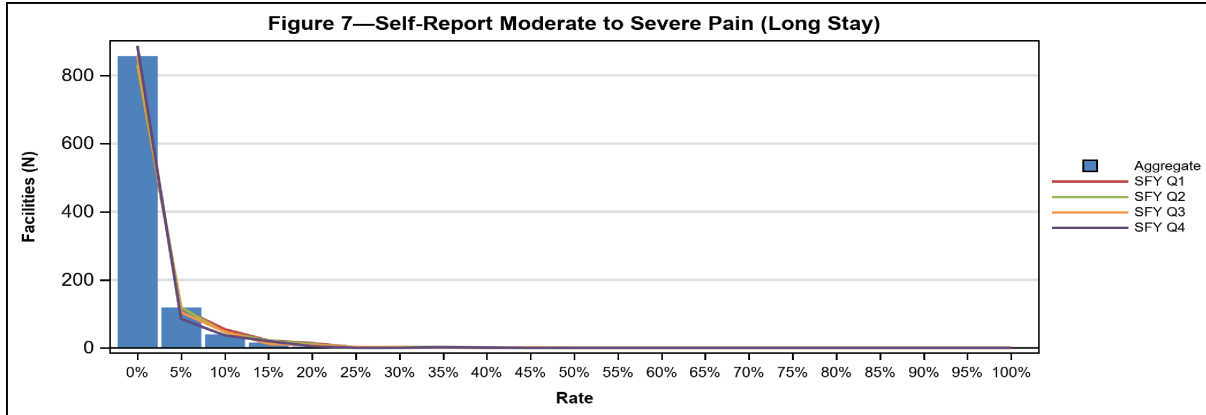


Table 9 shows the number of facilities evaluated, percentile distribution, mean, minimum, and maximum rate for the Self-Report Moderate to Severe Pain (Long Stay) measure.

Table 9—Self-Report Moderate to Severe Pain (Long Stay)

Performance Period	Number of Facilities	10th percentile	25th percentile	50th percentile	75th percentile	90th percentile	Mean	Minimum Rate	Maximum Rate
SFY Q1	1,039	9.434%	3.922%	0.000%	0.000%	0.000%	2.923%	0.000%	47.619%
SFY Q2	1,037	8.772%	3.571%	0.000%	0.000%	0.000%	2.827%	0.000%	40.909%
SFY Q3	1,038	8.333%	2.885%	0.000%	0.000%	0.000%	2.405%	0.000%	47.619%
SFY Q4	1,037	7.317%	2.500%	0.000%	0.000%	0.000%	2.126%	0.000%	40.909%
Aggregate	1,040	7.947%	3.286%	0.783%	0.000%	0.000%	2.577%	0.000%	41.667%

Increased Need for Help with Activities of Daily Living (Long Stay)

Figure 8 shows the rate distribution for the Increased Need for Help with Activities of Daily Living (Long Stay) measure in 5-percent intervals. Each interval includes all facilities whose score is equal to or greater than the lower interval and less than the higher interval. Note that for the Increased Need for Help with Activities of Daily Living (Long Stay) measure, a lower rate indicates better performance.

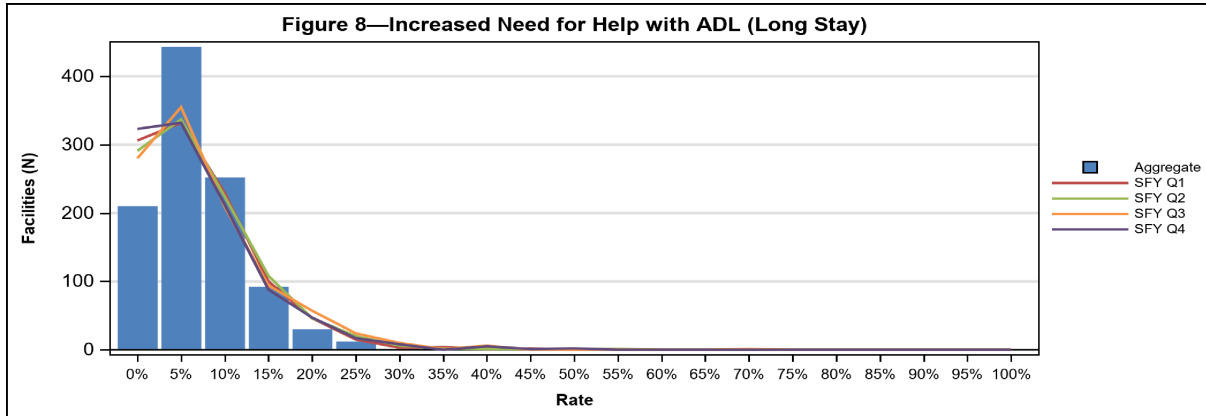


Table 10 shows the number of facilities evaluated, percentile distribution, mean, minimum, and maximum rate for the Increased Need for Help with Activities of Daily Living (Long Stay) measure.

Table 10—Increased Need for Help with Activities of Daily Living (Long Stay)

Performance Period	Number of Facilities	10th percentile	25th percentile	50th percentile	75th percentile	90th percentile	Mean	Minimum Rate	Maximum Rate
SFY Q1	1,039	17.857%	12.595%	8.000%	4.255%	1.754%	9.183%	0.000%	55.000%
SFY Q2	1,038	18.519%	12.500%	8.163%	4.545%	1.754%	9.373%	0.000%	55.556%
SFY Q3	1,037	19.512%	12.766%	8.000%	4.762%	2.290%	9.639%	0.000%	70.833%
SFY Q4	1,035	18.182%	12.245%	7.813%	4.167%	1.639%	9.042%	0.000%	52.381%
Aggregate	1,042	16.000%	12.048%	8.237%	5.556%	3.672%	9.291%	0.000%	38.971%

Received an Antipsychotic Medication (Long Stay)

Figure 9 shows the rate distribution for the Received an Antipsychotic Medication (Long Stay) measure in 5-percent intervals. Each interval includes all facilities whose score is equal to or greater than the lower interval and less than the higher interval. Note that for the Received an Antipsychotic Medication (Long Stay) measure, a lower rate indicates better performance.

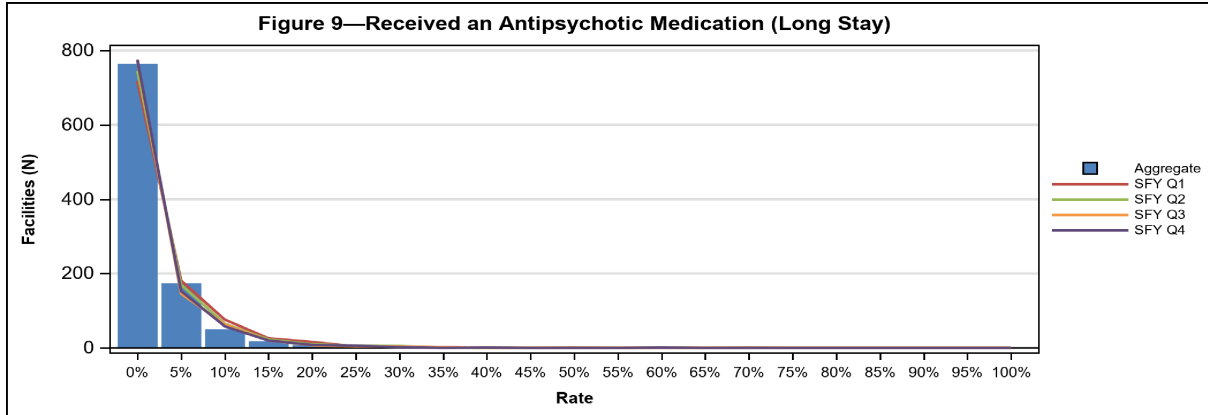


Table 11 shows the number of facilities evaluated, percentile distribution, mean, minimum, and maximum rate for the Received an Antipsychotic Medication (Long Stay) measure.

Table 11—Received an Antipsychotic Medication (Long Stay)

Performance Period	Number of Facilities	10th percentile	25th percentile	50th percentile	75th percentile	90th percentile	Mean	Minimum Rate	Maximum Rate
SFY Q1	1,029	11.111%	6.154%	2.041%	0.000%	0.000%	4.204%	0.000%	71.429%
SFY Q2	1,026	10.169%	5.405%	1.818%	0.000%	0.000%	3.783%	0.000%	62.500%
SFY Q3	1,021	9.677%	4.762%	1.538%	0.000%	0.000%	3.442%	0.000%	61.111%
SFY Q4	1,024	9.091%	4.762%	1.220%	0.000%	0.000%	3.323%	0.000%	62.500%
Aggregate	1,024	9.053%	5.041%	1.852%	0.482%	0.000%	3.678%	0.000%	63.889%

30-Day SNF Rehospitalization

Figure 10 shows the rate distribution for the 30-Day SNF Rehospitalization measure in 5-percent intervals. Each interval includes all facilities whose score is equal to or greater than the lower interval and less than the higher interval. Note that for the 30-Day SNF Rehospitalization measure, a lower rate indicates better performance.

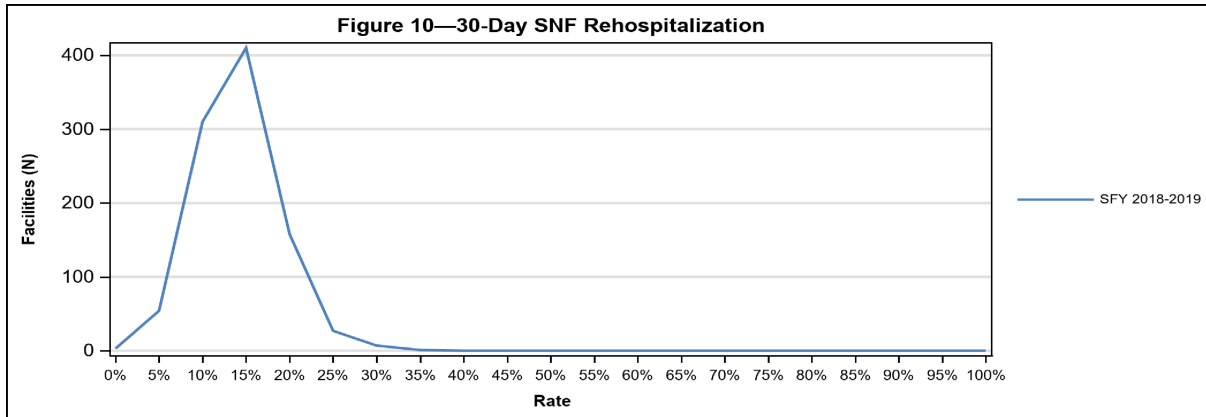


Table 12 shows the number of facilities evaluated, percentile distribution, mean, minimum, and maximum rate for the 30-Day SNF Rehospitalization measure.

Table 12—30-Day SNF Rehospitalization

Performance Period	Number of Facilities	10th percentile	25th percentile	50th percentile	75th percentile	90th percentile	Mean	Minimum Rate	Maximum Rate
SFY 2018-19	972	22.124%	19.166%	16.310%	13.532%	10.972%	16.490%	0.000%	35.462%

Staff Retention

Figure 11 shows the rate distribution for the Staff Retention measure in 5-percent intervals. Each interval includes all facilities whose score is greater than the lower interval and less than or equal to the higher interval. Note that for the Staff Retention measure, a higher rate indicates better performance.

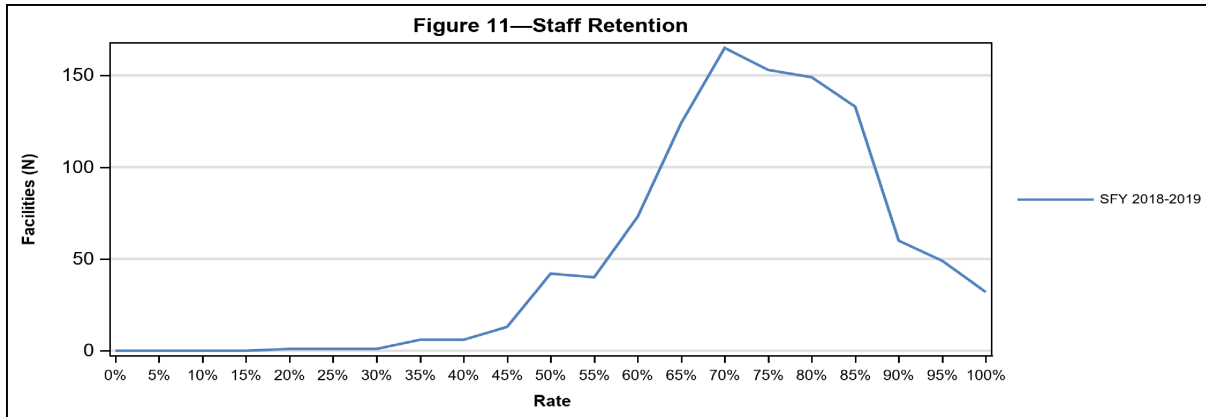


Table 13 shows the number of facilities evaluated, percentile distribution, mean, minimum, and maximum rate for the Staff Retention measure.

Table 13—Staff Retention

Performance Period	Number of Facilities	10th percentile	25th percentile	50th percentile	75th percentile	90th percentile	Mean	Minimum Rate	Maximum Rate
SFY 2018-19	1,046	54.639%	63.333%	71.654%	80.645%	88.506%	71.396%	18.919%	100.000%